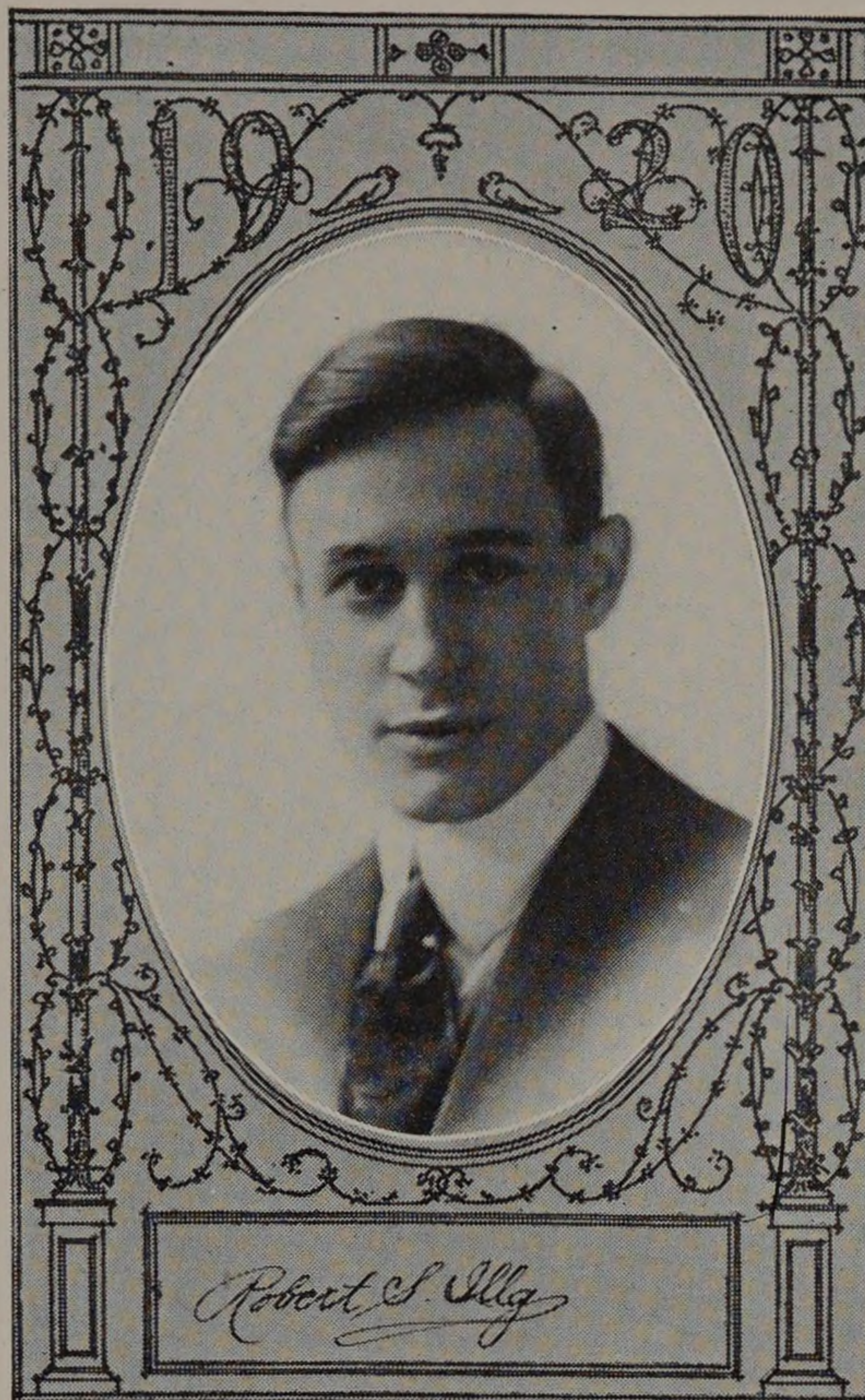


**ROBERT S. ILLG**

Born Nov. 27, 1897. Chicago, Ill.  
Electrical Railway Engineering.  
Electrification of the Illinois Central  
Terminal.

Sigma Kappa Delta. Interclass base-  
ball, '18, '19, '20. Eta Kappa Nu.  
Senior class committee, '20. A. I.  
E. E., Tech. Basket Ball 1916. In-  
terclass basket ball '16, '17, '18, '19.  
Junior class secretary, 1918-19..

Bob has always been known as one of  
the "peppery" electricals that were  
represented in all social, athletic  
and school activities. One glimpse  
at Bob's record would lead one to  
wonder "just how he could find  
time," but regardless of time, Bob  
has always produced, and produced  
well. Whether in a ball game, at a  
dance ("with the ladies"), in his  
fraternity affairs, or any other  
affairs of importance, Bob has never  
failed to make a "hit." One thing  
becomes evident from Bob's past  
record, and that is that no matter  
what he enters, he should be a head-  
liner" in the field.

**ABRAHAM SANG LIU**

Born April 1, 1897. Honolulu, Hawaii.  
St. Louis Academy Honolulu.  
Electrical Engineering.

Design of a 110,000 Volt, 60 Cycles,  
Single Phase Shell Type Transform-  
er.

Eta Kappa Nu, A. I. E. E. Interclass  
baseball, '14, '15. Intercollegiate  
baseball, '20.

Sang heard the call of the U. S. all  
the way down to Honolulu. He spent  
his first year in engineering at Cornell  
then came to Armour, and after the first  
semester decided that he liked Armour  
best. Liu was scheduled for the class of  
1919, but was handicapped due to the  
fact that he answered the call of his mil-  
itary unit in Hawaii, in which he served  
for six months. However, he came back  
with a smile, more determined than ever.  
Besides carrying a double program, he  
made the Tech team as receiving end of  
the battery and brought honors to Ar-  
mour.

