

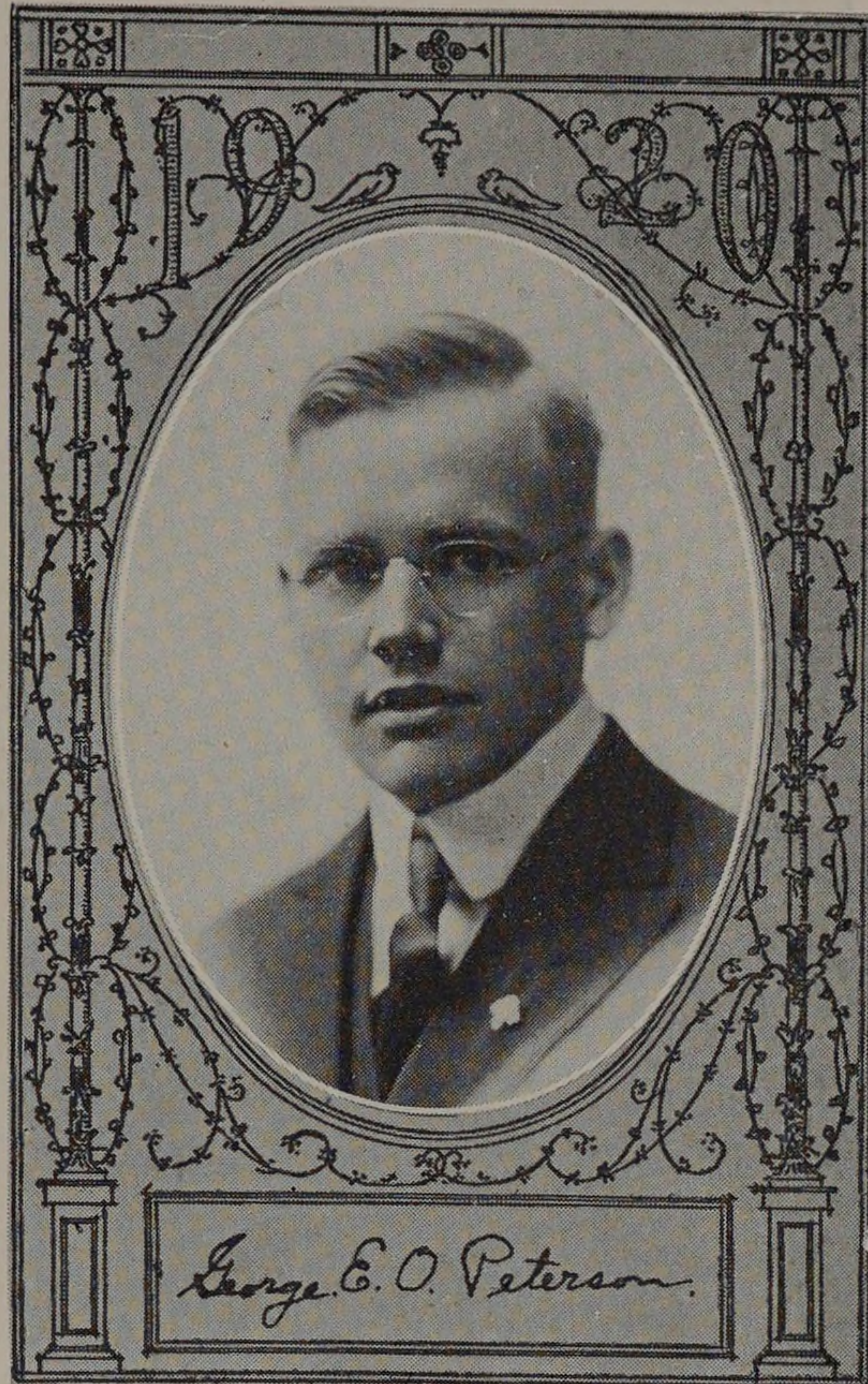
PRIVATE LIBRARY OF
JOHN J. SCHOMMER

GEORGE E. O. PETERSON

Born Oct. 3, 1896. Chicago, Ill.
Tilden High School—formerly Lake High.

Mechanical Engineering.
Design of a Two Hundred Horse Power Aeronautical Engine.
A. S. M. E.

George was not a member of the Glee Club; but he has the ability to sing with the best of them. He has never been seen without his broad smile—we don't know the cause of it, but we have our suspicions. He is a congenial, mature, steady plugger, whose future can spell only success.



HAROLD C. PETERSON

Born Nov. 30, 1897. Joliet, Ill.
Joliet Township High School.
Mechanical Engineering.

An Investigation into the Tensile Properties of Steels at Extreme Temperatures.

Military Editor, 1919 "Cycle." Secretary Y. M. C. A., 1918-1919. Treasurer A. S. M. E., 1919-1920. Glee Club, 1918, 19, 20. Associate Business Manager Engineer, 1919-1920.

"Pete" H. C." travels between Armour and Joliet twice daily, yet finds time to take an interest and be active in the school activities, besides showing a surprising capacity for work. We do not know if these characteristics are due to down-state environments but we do know that he seldom gets peeved unless someone prevents him from working at something or other. Judging from his record at Armour, Pete will surely make the sparks fly in his future work, for he can't help but make good. Armour loses a mighty good fellow when he leaves. We're for him.

