

# THOMAS WINSLOW HALL

Born January 16, 1899. Decatur, Ala.  
Parker High School.

Mechanical Engineering.

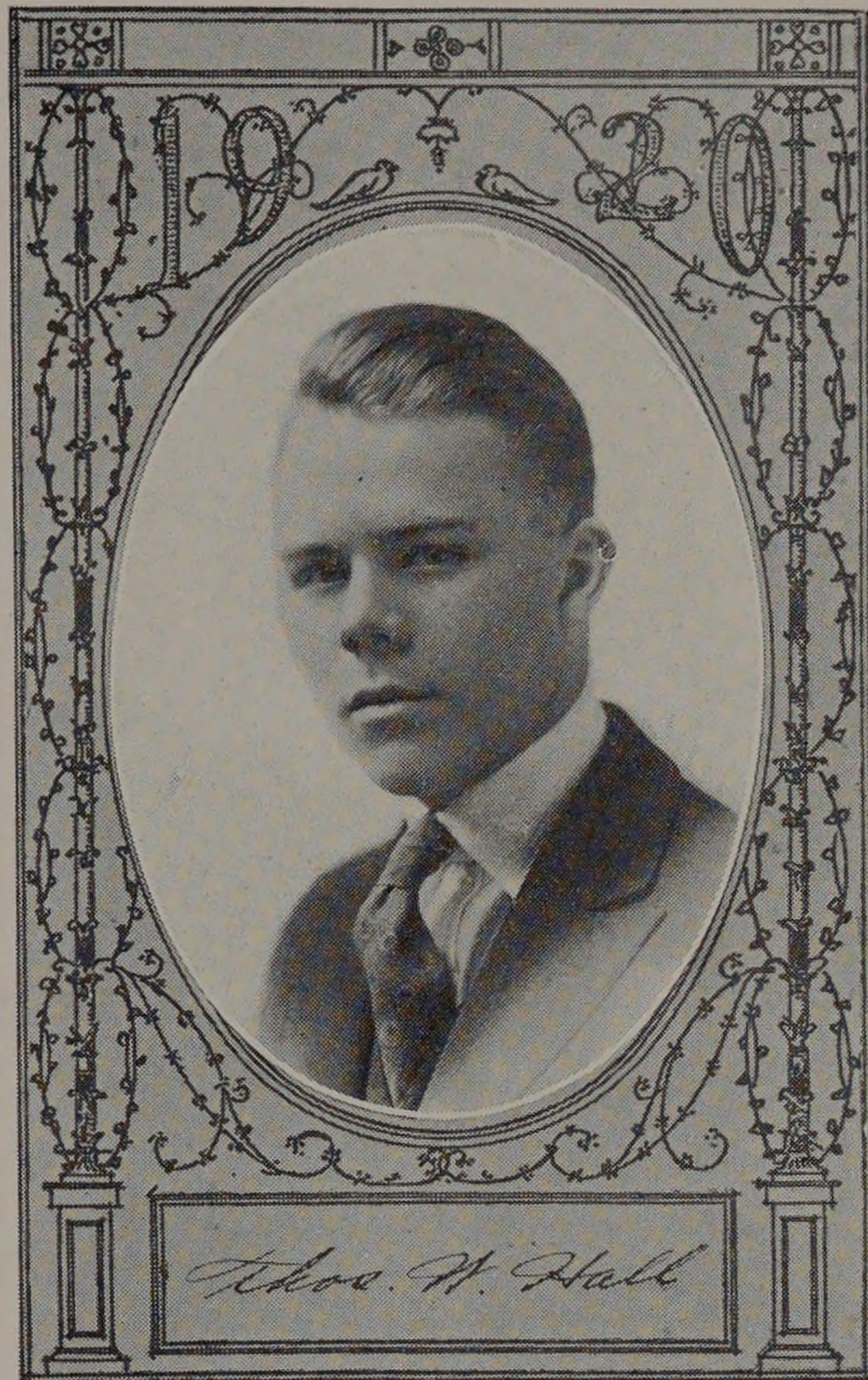
An Investigation into the Tensile  
Properties of Steels at Extreme  
Temperatures.

Managing Editor "Armour Engineer"  
'19-'20.

Managing Editor "The Cycle" '18-'19.  
Social Committee '19. A. S. M. E., '19-  
'20.

Glee Club, '19-'20.

"Tommy" was born in the South, but long association with Northerners has obviated that defect. He is a good conscientious worker, but likes his moments of rest too. He is one of the founders of the Adiabatic Order of Dumbbells and at present he still maintains that, "*theoretically* the adiabatic curve in its entirety, is but a ramification of the polytropic law," etc. ad inf. He has friends (especially among the mechanicals and the electricals) who will not forget the quiet afternoons of study spent in the "engineers office."



# GEORGE M. HENRY

Born May 29, 1898. Chicago, Ill.

Carl Schurz High School.

Mechanical Engineering.

"Construction and Redesign of a 10  
H. P. Heavy Duty Gas Engine."

Sigma Kappa Delta. Class Jazz Band,  
A. S. M. E., Y. M. C. A.

"Hank" is one of those tall, lean individuals, whose good nature and willingness to give help make him a good friend worth having. His easy going and comfortable ways make one realize how hard it would be to get along without him, when beset by college worries. He is a regular fellow, and claims that Logan Square produces only regular ones. His unusual ability at the piano makes him an active member of the Gottlieb-Henry professional orchestra; in which organization he surely does tickle those keys.

