

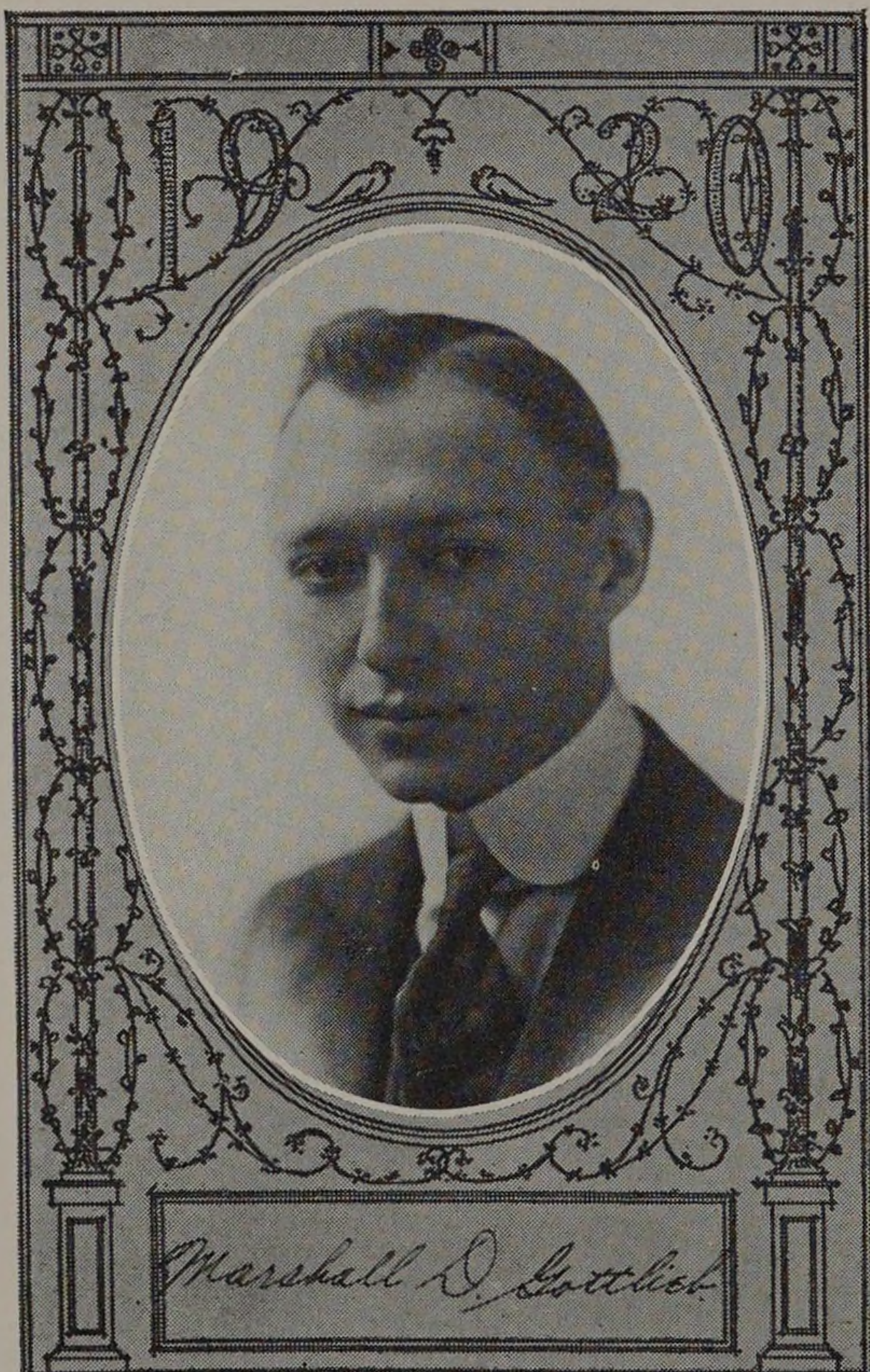
WILLIAM NOLING ERICKSON

Born March 26, 1898. Chicago, Ill.
Lane Technical High School.

Mechanical Engineering.

"Performance and Efficiency Test of a Harrington Chain Grate Stocker."
Delta Tau Delta; A. S. M. E.; Sphinx;
Honor "A"; Varsity Basketball 1916-'17-'19-'20; Interclass basketball 1916 to 1920; Interclass baseball 1916 to 1920; Captain varsity baseball 1920; Advertising manager 1919 "Cycle"; Business manager "The Armour Engineer" 1919-'20. President Junior class 1919; Vice-President Sophomore class 1918. Chairman picture committee Senior class 1920. Secretary A. S. M. E., 1919-'20; Secretary and Treasurer Honor "A" Society, 1918-'19. Glee Club, 1920.

Bill has no particular hobby, but is rather a headliner in all school activities. This is readily seen from his record as an athlete, a social promoter, and a general all around good fellow. There is no doubt about his ability to do whatever he undertakes. He is another of the regular Armour men; men that meet conditions as they are.



MARSHALL DANIEL GOTTLIEB

Born Feb. 22, 1898. Indianapolis, Ind.
Crane Technical High School. June 1915.

Mechanical Engineering.

Construction and Re-design of a 10 H. P. Heavy Duty Gas Engine.

A. S. M. E., Class Indoor, 1919. Treasurer of Junior Class, 1919. Member of Glee and Mandolin Club. Leader and violinist of class jazz band. Chairman of cap and gown committee of senior class. Assistant "Cycle" representative of Senior Class, 1920.

"Marsh" took a leading part in many school activities; in fact there are very few in which he did not star, as his record will show. Whether it be engineering, fiddling, athletics or social activities, his work was always well done. Three and one-half years was all the time he needed in which to finish the four years' course, and with a record to be proud of.

If ability to make friends and to play a fiddle will help to make an engineer, we can vouch for his success.