

HAROLD F. CLAUSEN

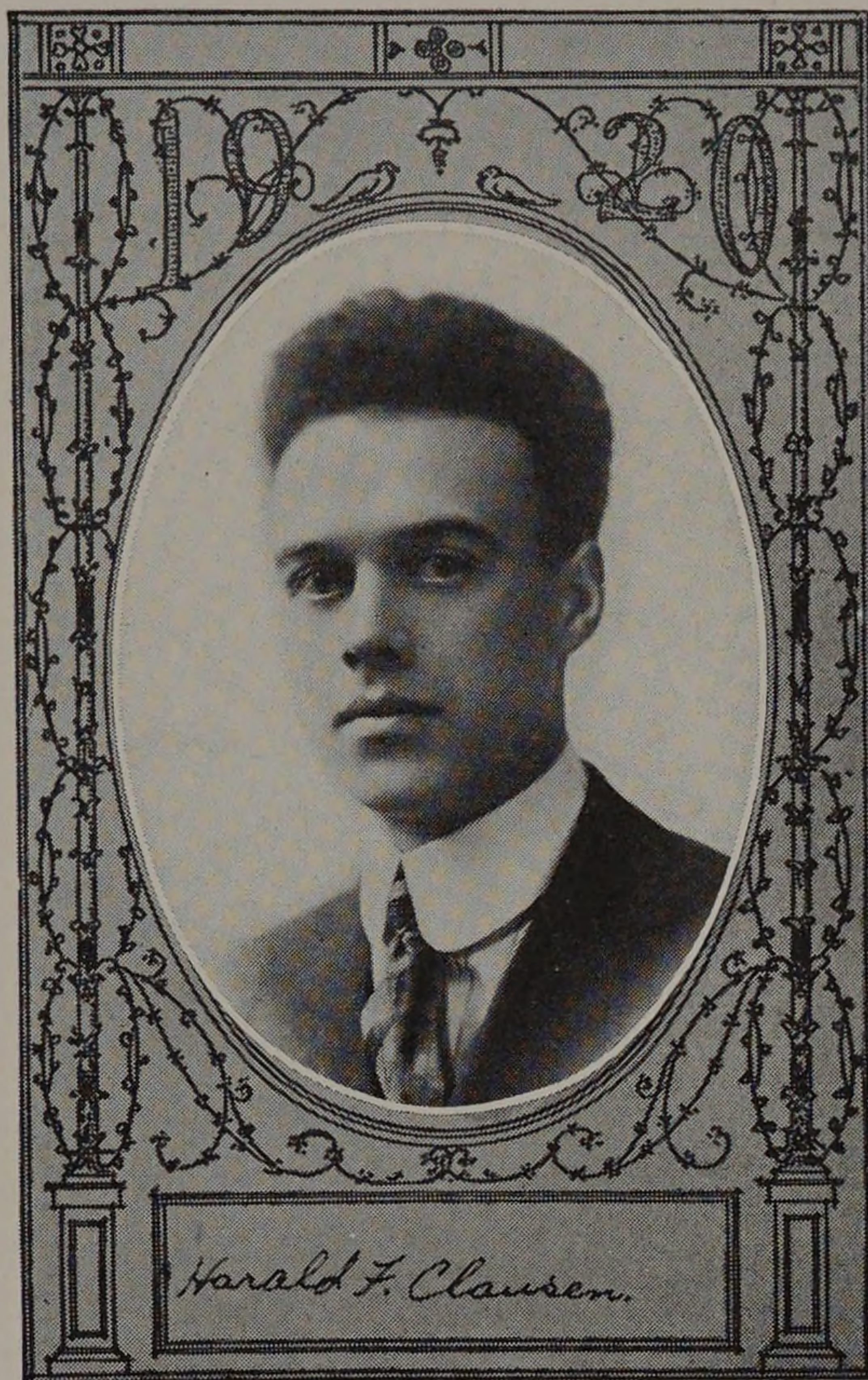
Born December 29, 1892. Neenah, Wis.
Neenah High School.

Mechanical.

Investigation of the Flow of Liquid
Through Orifices.

Beta Phi Fraternity, A. S. M. E.

Curly, well known for his dry wit and humor, seems of late to have a great load resting heavily on his shoulders; must be due to leap year. This will not hinder him, however, for it is impossible to hold a man down who possesses ingenuity and tenacious character like his. The folks at Neenah will sit up and take notice when "Curly" comes home in June.



ELLIS C. COOK

Born January 12, 1899. St. Louis, Missouri.

Parker High School '16.

Mechanical Engineering.

Sigma Kappa Delta; Tau Beta Pi; Sphinx; A. S. M. E.; Y. M. C. A.; Glee Club; Editor-in-Chief, "Cycle" 1919; Editor-in-Chief "Armour Engineer" 1919-20; President A. S. M. E. 1919-20; President Tau Beta Pi, 1919; Interclass Baseball 1917-18.

The imposing character of the list of accomplishments credited to "the berries" can be accounted for by quality and versatility alone. We know we are sage in predicting that his successes at Armour will be repeated in the business world.

