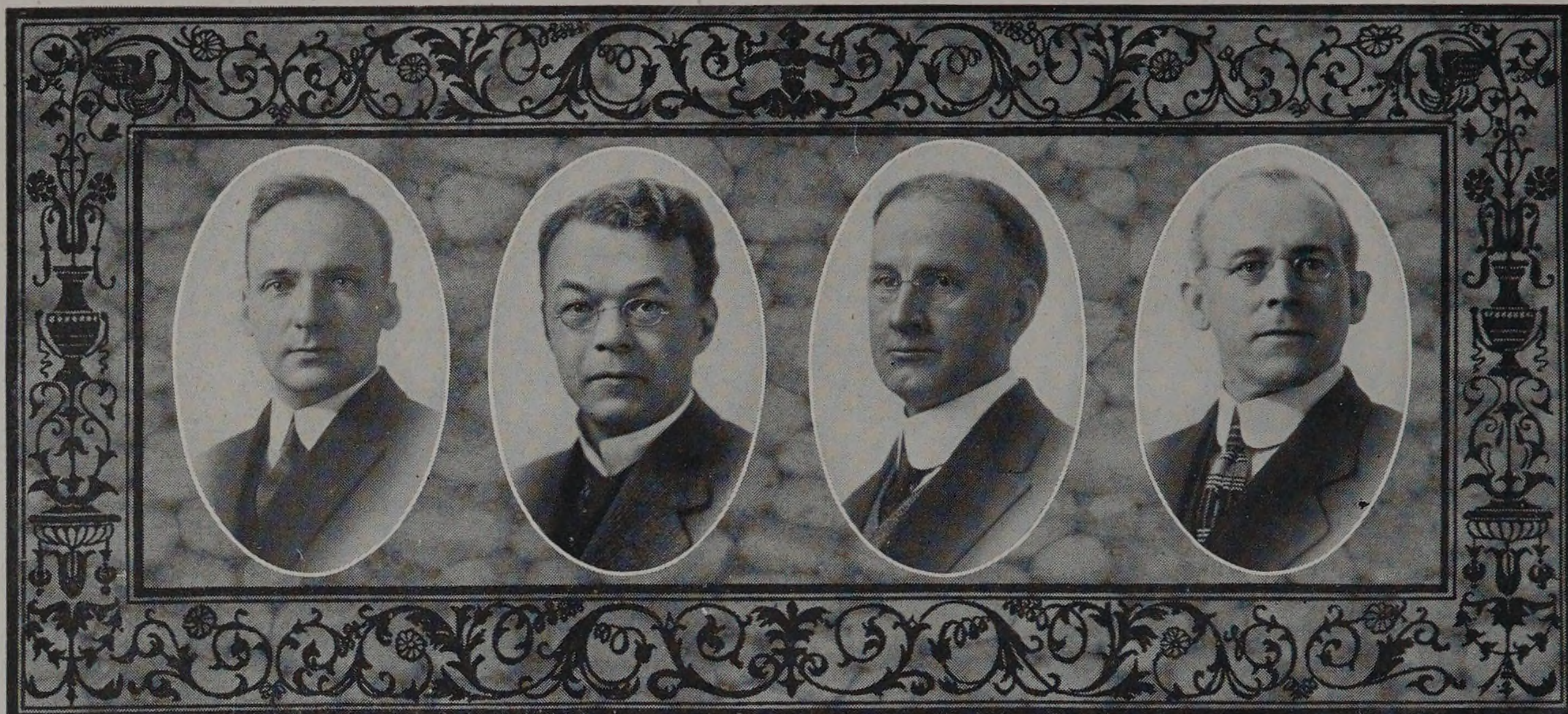


THE INSTITUTE



CHARLES AUSTIN TIBBALS

Associate Professor of Analytical Chemistry.  
Birthplace, New York City, New York.  
Columbia University; A.B., University of Wisconsin, 1904; A.M., 1906; Ph.D., 1908.  
Phi Gamma Delta; Sigma Xi; Phi Lambda Upsilon.  
Member of American Chemical Society.  
Author of "A Study of Tellurides."  
Research Work in Inorganic Chemistry.  
Residence, 511 Hawthorn Lane, Winnetka, Ill.

CLYDE BARNES COOPER

Associate Professor of English.  
Birthplace, Prairie City, Illinois.  
M.A., University of Iowa; Ph.D., University of Chicago.  
Residence, 1126 East 62nd Street.

OLIVER CHARLES CLIFFORD

Associate Professor of Electrical Engineering.  
Birthplace, Wadsworth, Ohio.  
A.B., Oberlin College, 1893; Ph.D., University of Chicago, 1907.  
Sigma Chi.  
Member of American Society of Mechanical Engineers.  
Research Work on "Susceptibility of Copper and Tin Alloys" and "Study of Heusler Alloys."  
Residence, 6053 Woodlawn Avenue.

CLAUDE IRWIN PALMER

Associate Professor of Mathematics.  
Birthplace, Michigan.  
A.B., University of Michigan, 1903.  
Member of the American Association for the Advancement of Science; American Mathematical Society.  
Author of "Arithmetic with Applications." "Geometry with Applications;" "Algebra with Applications;" "Trigonometry and Logarithms;" Co-author of Trigonometry; co-author of Plane Geometry.  
Residence, 6440 Greenwood Avenue.