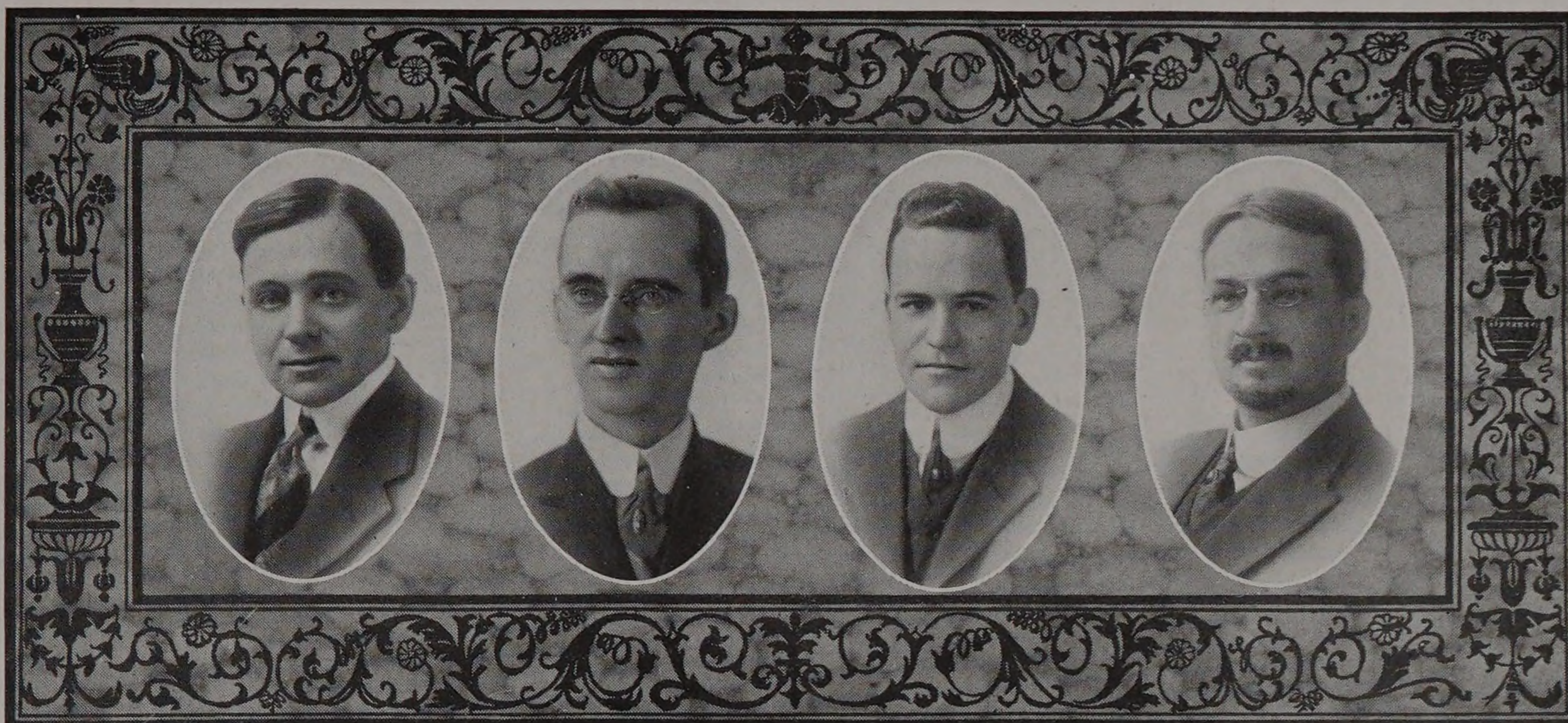


## THE INSTITUTE



### HARRIE BRIDGMAN PULSIFER

Assistant Professor of Metallurgy.

Birthplace, Lebanon, New Hampshire.

S.B., Massachusetts Institute of Technology, 1903; Ch.E. Armour Institute, 1915.

Member of American Institute of Mining Engineers; American Electro-Chemical Society; American Chemical Society; American Association for the Advancement of Science.

Residence, 506 East 33rd Place.

### CHARLES R. SWINEFORD

Instructor in Descriptive Geometry.

Birthplace, Van Wert, Ohio.

B.S., University of Michigan, 1904; M.E., 1907.

Instructor, University of Michigan, 1907-1908.

Residence, 6506 Kimbark Avenue.

### JOHN J. GILBERT

Instructor in Electrical Engineering.

Birthplace, Philadelphia, Pennsylvania.

A.B., University of Pennsylvania, 1909; E.E., Armour Institute 1916.

Sigma Kappa Delta; Sigma Xi; Eta Kappa Nu; Gamma Alpha.

Member American Physical Society; Member American Institute of Electrical Engineers; Member Institute of Radio Engineers.

Residence, 5520 Blackstone Avenue.

### ALBERT H. KREHBIEL

Instructor in Freehand Drawing.

Birthplace, Iowa.

Bethel College. Studied at the Art Institute and in Paris.

Member of Various Art Societies.

Residence, Park Ridge, Illinois.