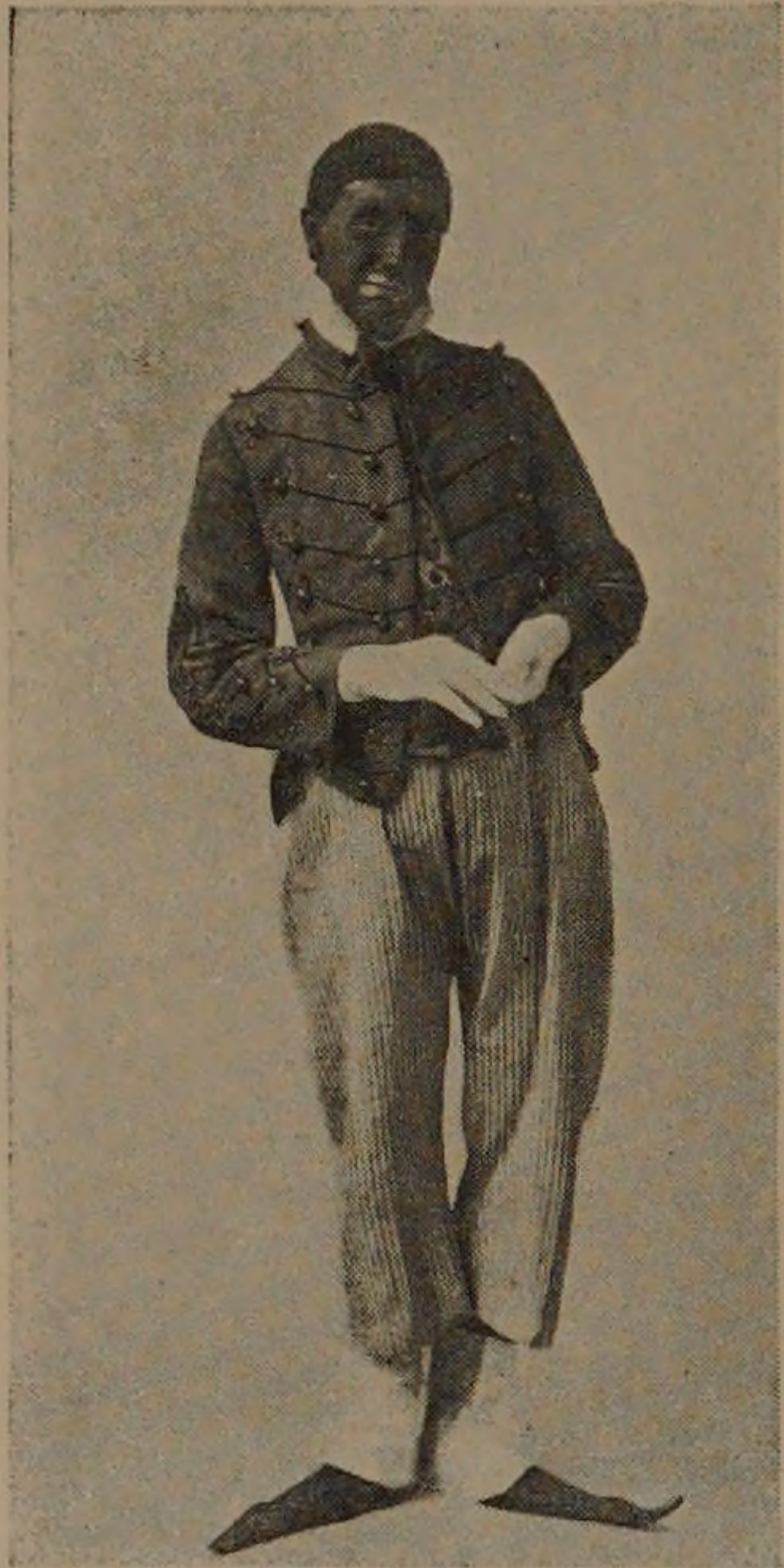


ORGANIZATIONS

BERT WILLIAMS HISSELF



HAROLD INGRAHAM

Harold Ingraham, as Bert Williams, hisself, needs no introduction to an Armour audience. The black-faced comedian with his soft, rolling darky dialect, his broad-toed shoes, and his high white collar, has been the hit of many a Glee Club Concert. The domestic troubles with his vampire wife brought tears—the tears that come from excessive laughter—to the eyes of many an audience. Will you ever forget the poker game, the slow offering of chips, the call for new cards, the suspicious glances, and the last sad call for a show down? Will you ever forget it?

Ingraham has been a very great worry to the managers all season. At one time it was rumored that the original Bert Williams had become so jealous of the imitation that he was about to issue a court injuncton restraining the production. At another time there was great danger that Harold would sign up with Ziegfield for the remainder of the season. But we kept him with us, and long may he remain to entertain us.

THE GERMAN LESSON

George M. Fritze's pictorial German Lesson delighted many an audience during our concert season. By closely following his instruction, one lesson was enough to make his hearers finished linguists. Each word was chosen with care, depicted with lifelike naturalness, and pronounced with guttural emphasis. The constant review of the words learned was a point of great pedagogical importance.

Fritze's costume had no small part in the success of his characterization of "Der alte Lehrmeister." "Der kleine weisse Hut und der rote Schnurrbart," while not a part of the lesson, became as firmly fixed in mind as "Die alte Mutter," or "Das Eisenbahn." The pointer he flourished became the magic wand which drew out and sometimes drove out the deep German sounds. So transformed did his audiences become that they forgot for a time their native tongue and, at the end of the lesson, with one accord, shouted, "Hoch, der Deutche Lehrmeister!"



GEORGE M. FRITZE