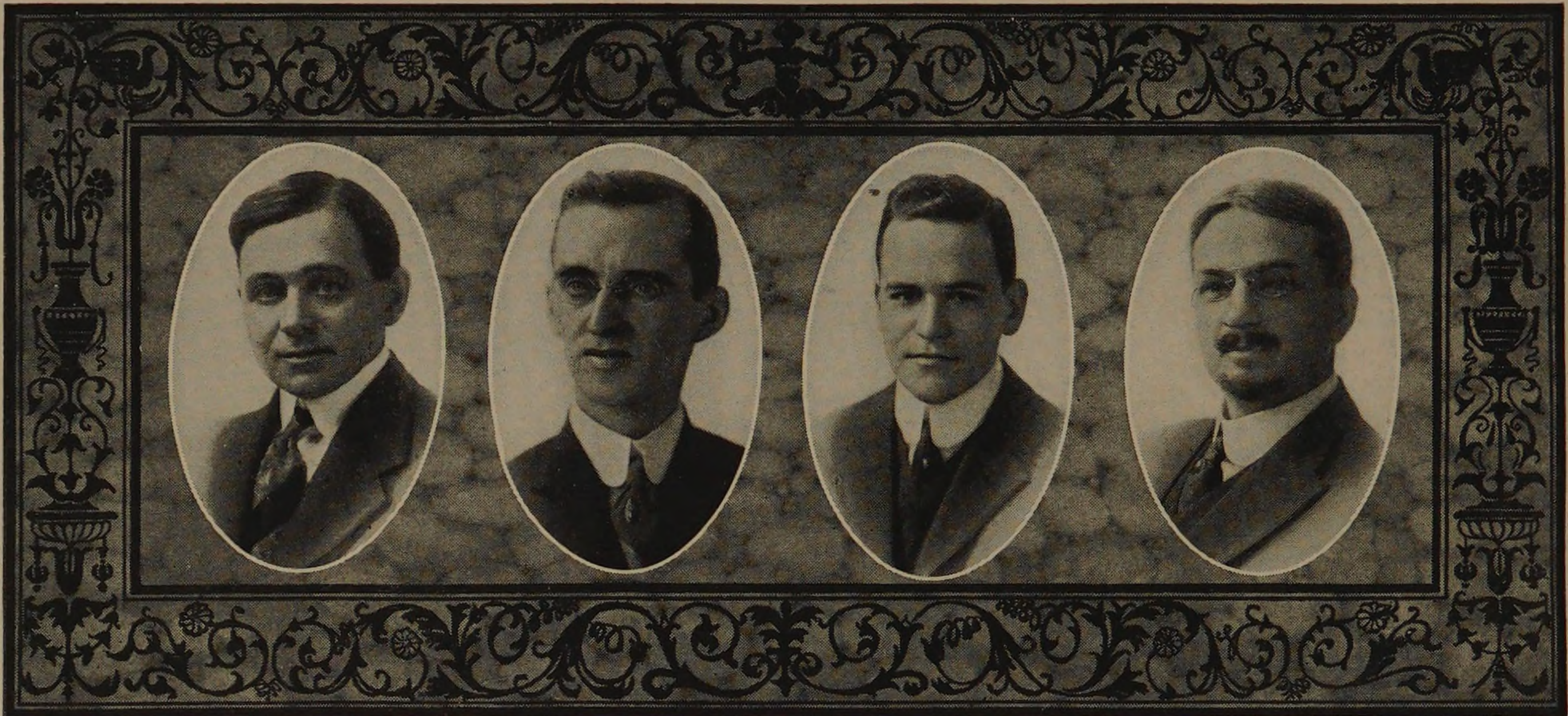


THE INSTITUTE



HARRIE BRIDGMAN PULSIFER

Assistant Professor of Metallurgy.

Birthplace, Lebanon, New Hampshire.

S.B., Massachusetts Institute of Technology, 1903.

Member of American Institute of Mining Engineers; American Chemical Society;
American Association for the Advancement of Science.

Residence, 506 East 33rd Place.

CHARLES R. SWINEFORD

Instructor in Descriptive Geometry.

Birthplace, Van Wert, Ohio.

B.S., University of Michigan, 1904; M.E., 1907.

Instructor, University of Michigan, 1907-1908.

Residence, 6506 Kimbark Avenue.

JOHN J. GILBERT

Instructor in Electrical Engineering.

Birthplace, Philadelphia, Pennsylvania.

A.B., University of Pennsylvania, 1909.

Sigma Kappa Delta; Sigma Xi; Eta Kappa Nu; Gamma Alpha.

Member American Physical Society; Member American Institute
of Electrical Engineers; Member Institute of Radio Engineers.

Residence, 5731 Kenwood Avenue.

ALBERT H. KREHBIEL

Instructor in Freehand Drawing.

Birthplace, Iowa.

Bethel College. Studied at the Art Institute and in Paris.

Member of Various Art Societies.

Residence, Park Ridge, Illinois.