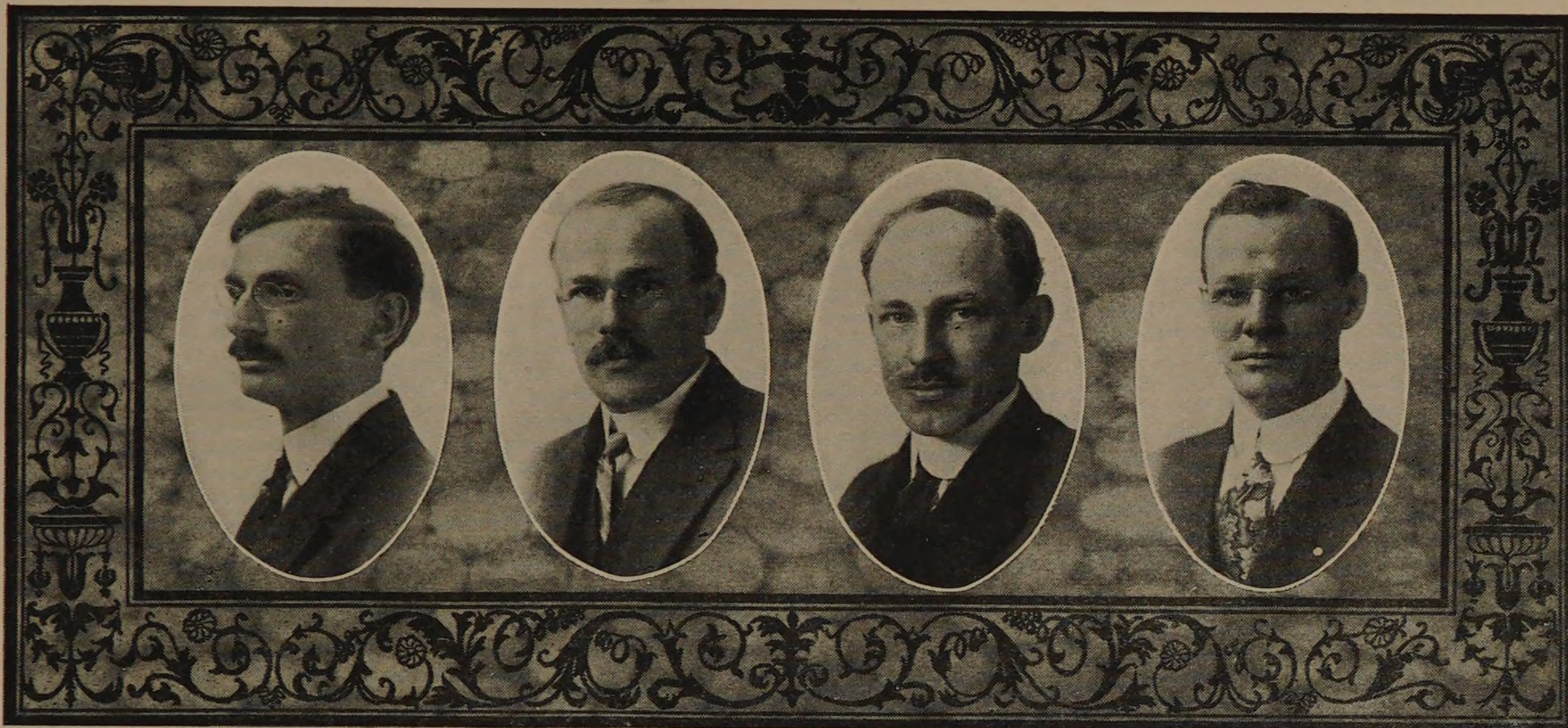




THE INSTITUTE



HENRY LEOPOLD NACHMAN

Associate Professor of Kinematics and Machine Design.

Birthplace, Sommerfeld, Germany.

B.S., Armour Institute of Technology, 1902; M.E., 1906.

Tau Beta Pi; Beta Phi.

Residence, 6049 Eberhart Avenue.

HERBERT JULIUS ARMSTRONG

Assistant Professor of Railway Engineering.

Birthplace, Sunderland, Mass.

B.S., Massachusetts Agricultural College, 1897.

Phi Sigma Kappa.

Member of American Railway Engineering Association.

Residence, 11353 So. Irving Ave., Morgan Park, Chicago.

ARTHUR HENRY ANDERSON

Assistant Professor of Experimental Engineering.

Birthplace, Chicago, Illinois.

M.E., Armour Institute of Technology, 1906.

Residence, 6826 Wayne Avenue.

EDWIN STEPHEN LIBBY

Assistant Professor of Experimental Engineering.

Birthplace, Portland, Maine.

B.S., Armour Institute of Technology, 1902; M.E., 1907.

Tau Beta Pi.

Residence, 11166 Esmond Street.