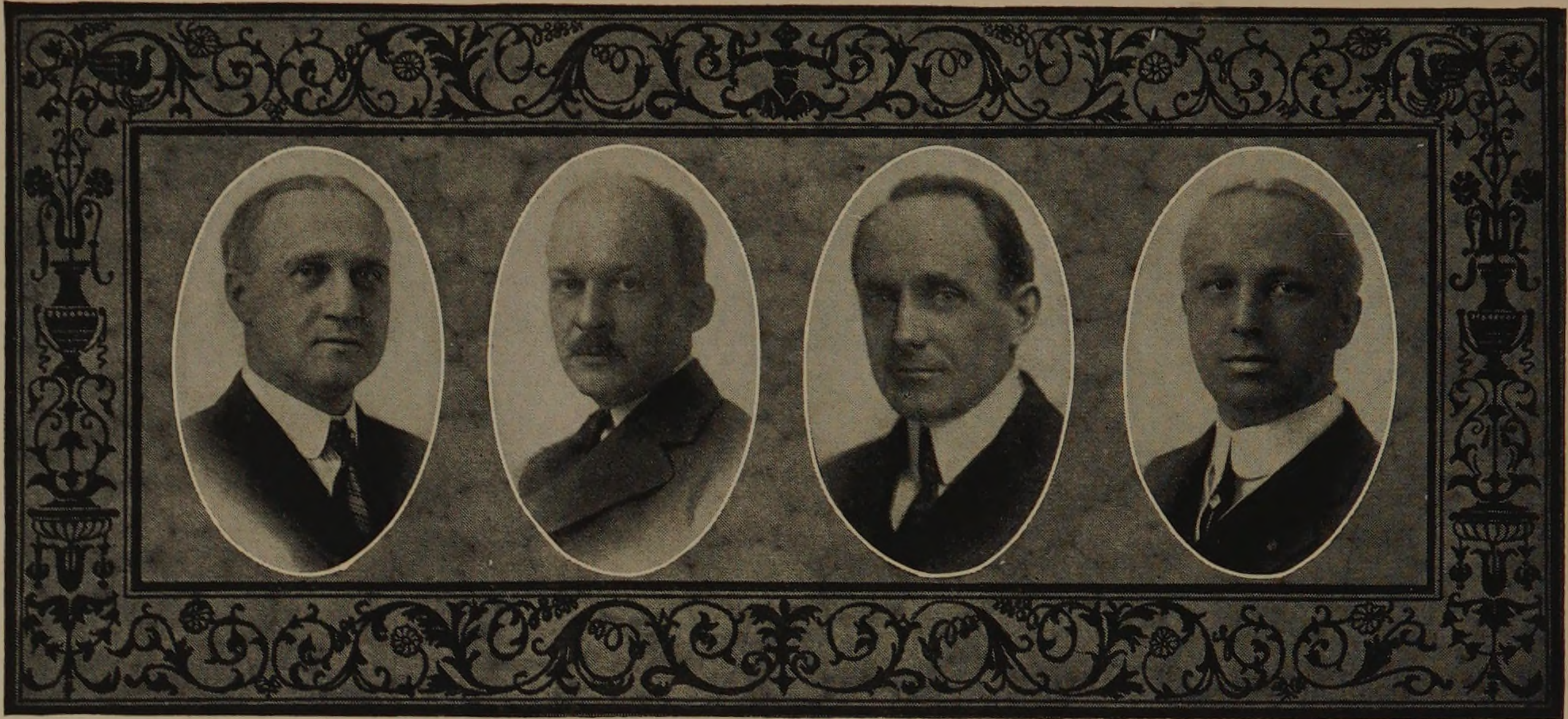




THE INSTITUTE



DONALD FRANCIS CAMPBELL.

Professor of Mathematics.

Birthplace, Nova Scotia.

B.A., Dalhousie College, Halifax, Nova Scotia, 1890; B.A., Harvard University, 1893. A.M., 1895; Ph.D., 1898.

Author of "Elements of Differential and Integral Calculus." "A Short Course in Differential Equations."

Research Work in Differential Equations.

Residence, 1134 Oak Avenue, Evanston, Illinois.

FITZHUGH TAYLOR.

Professor of Fire Protection Engineering.

Birthplace, Elmhurst, Illinois.

B.S., Armour Institute of Technology, 1900.

Member of National Fire Protection Association and Chicago Literary Club.

Residence, 4402 Greenwood Avenue.

HENRY BASCOM THOMAS.

Professor of Hygiene, Director of Physical Culture and Medical Adviser.

Birthplace, Elk Garden, Virginia.

B.S., University of Chicago, 1899; M.D., Northwestern University Medical School, 1903.

Kappa Sigma. Phi Rho Sigma.

Chicago Orthopedic Association. Member of Attending Staff of St. Luke's Hospital; Chief of Department of Orthopedic Surgery, Cook County Hospital. Member American and Chicago Medical Association. Middle States Orthopedic Association.

Office, 31 No. State Street.

Residence, 6530 University Avenue.

WALTER FRANCIS SHATTUCK

Professor of Architecture.

Birthplace, Champaign, Illinois.

B.A., and M.A., University of Illinois.

Alpha Delta Tau.

Member of Chicago Chapter of the American Institute of Architects.

Residence, Kenilworth, Ill.