

THE CLASSES



B.S. in E.E.

J. FRIECE ADAMSON

Indirect Illumination with Nitrogen Filled Lamps

Born November 1, 1890, at Correctionville, Iowa.

Correctionville High School, '09.

Sigma Kappa Delta; Eta Kappa Nu; A.I.E.E.; Y.M.C.A.; Treas. A.I.E.E., '14-'15.

"Ad's" ambition, next to being an electrical engineer, of course, is to go back to the farm and live "the life." He is a master of that most necessary art—self control.



ROY HUPP

Steam Power Plant Design.

Born March 18, 1892, at Slater, Missouri.

Slater High School, '09; Central College.

Omega Lambda; Eta Kappa Nu; Glee Club, '14-'15.

Roy is one of the fellows who are putting in their nights working, while attending school at Armour and making good in his classes.

Take our word for it, that requires "pep."



JOHN DEERING

Design of Hocking Valley Power and Transmission System.

Born July 31, 1887, at Highland Park, Illinois.

Deerfield Twp. High School, Chicago; University of Arizona. A.I.E.E.

John says that in search of a good thing, one may well go a long way. Witness the fact that he has gone to Arizona and returned to graduate from Armour. In addition to that, he travels from Highland Park every day to attend his classes.



SIDNEY SHAFFER

Diversity Factor.

Born January 15, 1893, at Chicago, Illinois.

Wendell Phillips High School, Chicago, '10.

Beta Phi; A.I.E.E.; Y.M.C.A.; Class Track, '11-'13; College Track, '11-'12; Fulcrum Representative, '13-'14; Humor Editor 1915 Cycle; Junior Play, '14.

"Sid" came into his own when he was appointed Humor Editor of the Cycle. He has something in him, however, besides humor and athletics, for he stands near the top in his studies, and is well liked by everyone who knows him.



WALTER PFEIFFER

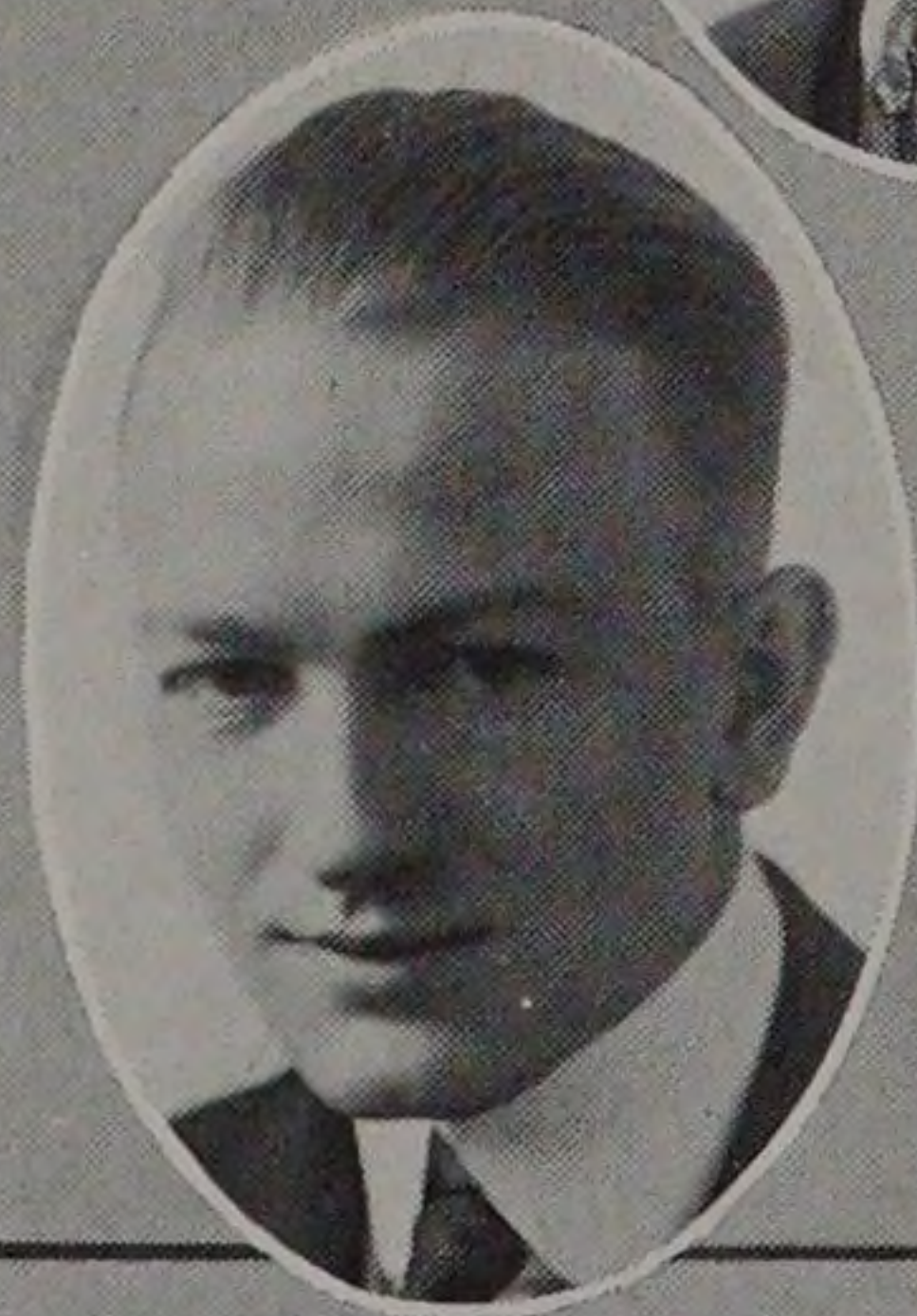
Design of a High Voltage Transmission Line.

Born January 1, 1893, at Kewaskum, Wisconsin.

Sheboygan Falls High School, Wisconsin.

Omega Lambda; Tau Beta Pi; Eta Kappa Nu; A.I.E.E.; College Track, '11-'12; Class Secretary, '12-'13.

Pfeiffer's wavy golden hair is at once the pride and despair of the Electricals. He is an easy winner in a beauty contest and a good student.



1915