

THE CLASSES

B.S. in M.E.

WALTER L. JUTTEMEYER

Relation Between Rate of Combustion and Draft Pressure for a Chain Grate Stoker Applied to a 350 H. P. Sterling Boiler.

Born October 2, 1887, at Alton, Illinois.

Alton High School, '05.

A.S.M.E.; Treasurer, '14-'15.

"Jutte" is the decimal point in size in the mechanical class, but although small in size, his presence is always felt. He is a hard worker and belongs to the list of "Regular Armour Men".

WALTER W. SIR

Economy and Capacity Test of a York Three-Ton Ice Plant.

Born October 25, 1892, at Chicago, Illinois.

Lake High School, Chicago.

A.S.M.E.; Class Track, '13-'14.

Sir is one of the real mechanics of the class, having built an automobile of his own. He has been an assistant in Dr. Gunsaulus' office for four years, and is well-liked by everyone with whom he comes in contact.

HARLAN C. SKINNER

Factors Influencing the Strength of Tapped Holes. S.A.E. Research.

Born July 31, 1890, at Forrest, Illinois.

Forrest High School, '09.

Beta Phi; A.S.M.E.; Y.M.C.A.

Skinner is a quiet, reserved sort of fellow, but once understood, is the kind of man that one likes to call a friend. His main hobby is carburetors, a new type of which he is now developing, and no doubt he will make a success of this work, as he is successful in everything he attempts.

ROGER C. PALMER

Volumetric Efficiency of a Packard Gasoline Motor.

Born September 24, 1892, at Chicago, Illinois.

Armour Scientific Academy, '11.

A.S.M.E.; Y.M.C.A.; Chairman Membership Committee, '14-'15.

The "Jolly Roger," as he is known, is one of those quiet, industrious fellows, who has gone through school with a minimum amount of noise and a maximum of work.

LEWIS E. HIBBARD

Design and Construction of an Exhaust Gas Calorimeter for an Automobile Engine.

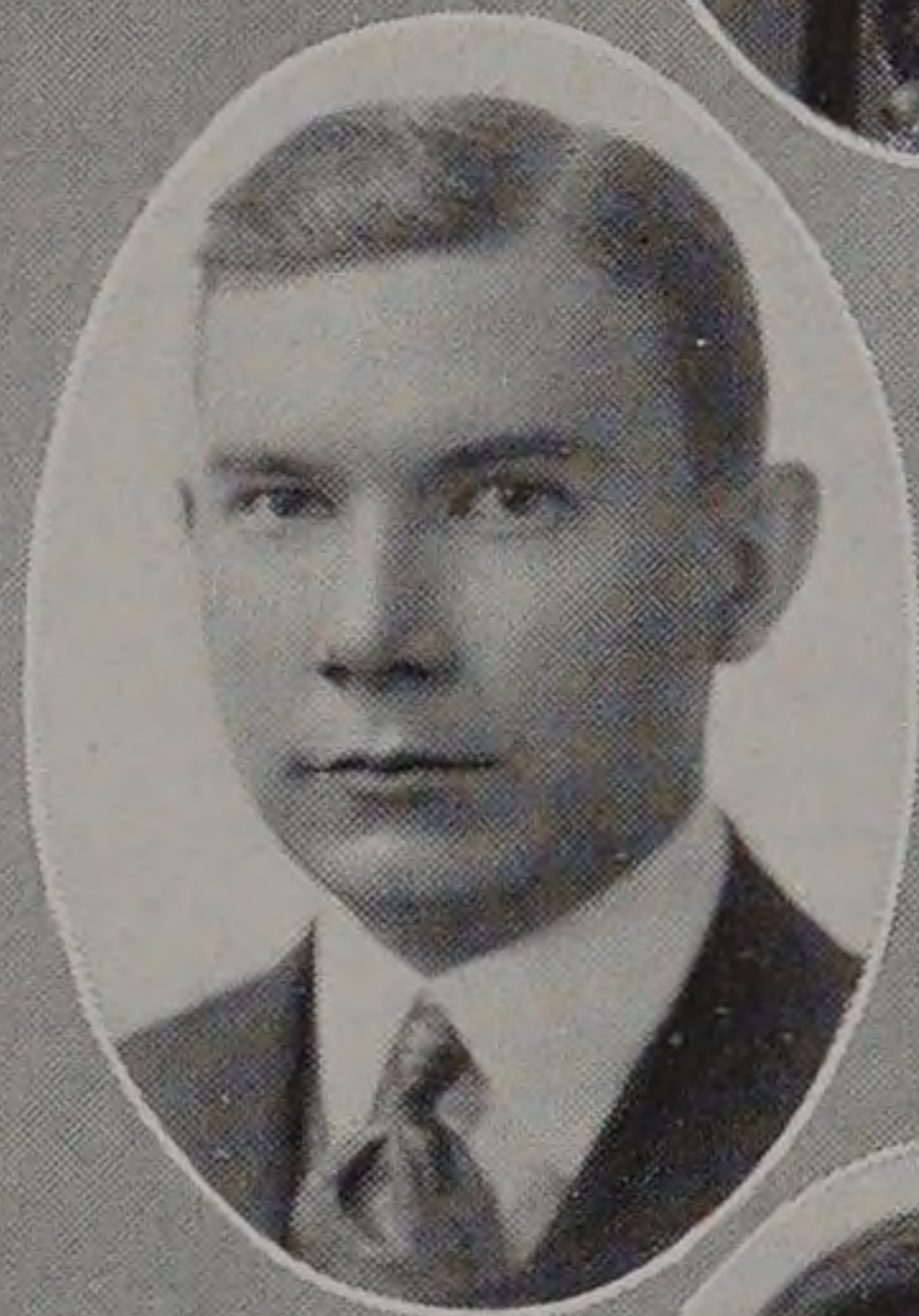
Born September 9, 1892, at Chicago, Illinois.

Lane Technical High School, Chicago, '10.

A.S.M.E.; Polemics; Y.M.C.A.

Hibbard is always present when there is anything doing at Armour.

He is a good worker, and a pleasant fellow to know. He was out of school a year, having enrolled with the class of 1914.



1915