

THE CLASSES

B.S. in M.E.

FREDERICK L. CHIPMAN

Effect of Varying Compression on Efficiency and Fuel Consumption of a Gas Engine.

Born February 2, 1889, at Anamcsa, Iowa.

Armour Scientific Academy, '10.

Sigma Kappa Delta; Sphinx Club; A.S.M.E.; Polemics; Y.M.C.A.; College Wrestling, '13-'14; Ass't. Business Manager, 1915 Cycle; Chairman, Senior Pin Committee.

"Equanimity," so named by Dean Monin, is one of the quite, slow sort of fellows who accomplish things. His unfailing good nature and kind-heartedness have made him well liked at Armour, and will do the same for him in later life.

LUDWIG W. A. BUNGE

Thermodynamic Analysis of Westinghouse 8x10, 3-Cylinder Gas Engine as Affected by Cam Design.

Born July 29, 1886, at Chicago, Illinois.

Armour Scientific Academy, '07.

Radical X; Y.M.C.A.; Class Treasurer, '13-'14; Auditor 1915 Cycle.

"Ludwig" is one of the married men of the class, but he doesn't let that keep him from taking part in all the class affairs, and Mr. and Mrs. Bunge are always present at the Armour social affairs. Bunge is one of the dependable men of the class and a hard worker.

HERBERT P. SHERWOOD

Efficiency and Capacity Test of a Small Absorption Refrigerating Machine.

Born December 1, 1891, at Paterson, New Jersey.

Paterson High School.

Delta Tau Delta; Radical X; A.S.M.E.; Social Committee, '12-'14; Chairman Social Committee, '12-'13.

"Pinky" came all the way from New Jersey to attend Armour, which shows his far-sightedness and sound judgment. He is one of the hard workers of the class, although golf and the fair sex take up much of his time.

JESS A. AGEE

Efficiency and Capacity Test of a Small Absorption Refrigerating Machine.

Born October 13, 1893, at Springfield, Illinois.

Wendell Park High School; Armour Scientific Academy, '11.

Tau Beta Pi; Radical X; A.S.M.E., Secretary, A.S.M.E.

"Jess" is a fine student and one of the best fellows we have had occasion to run across. We look for him to make a big success after graduation, as he has done in his school work.

FRED LEWIS FAULKNER

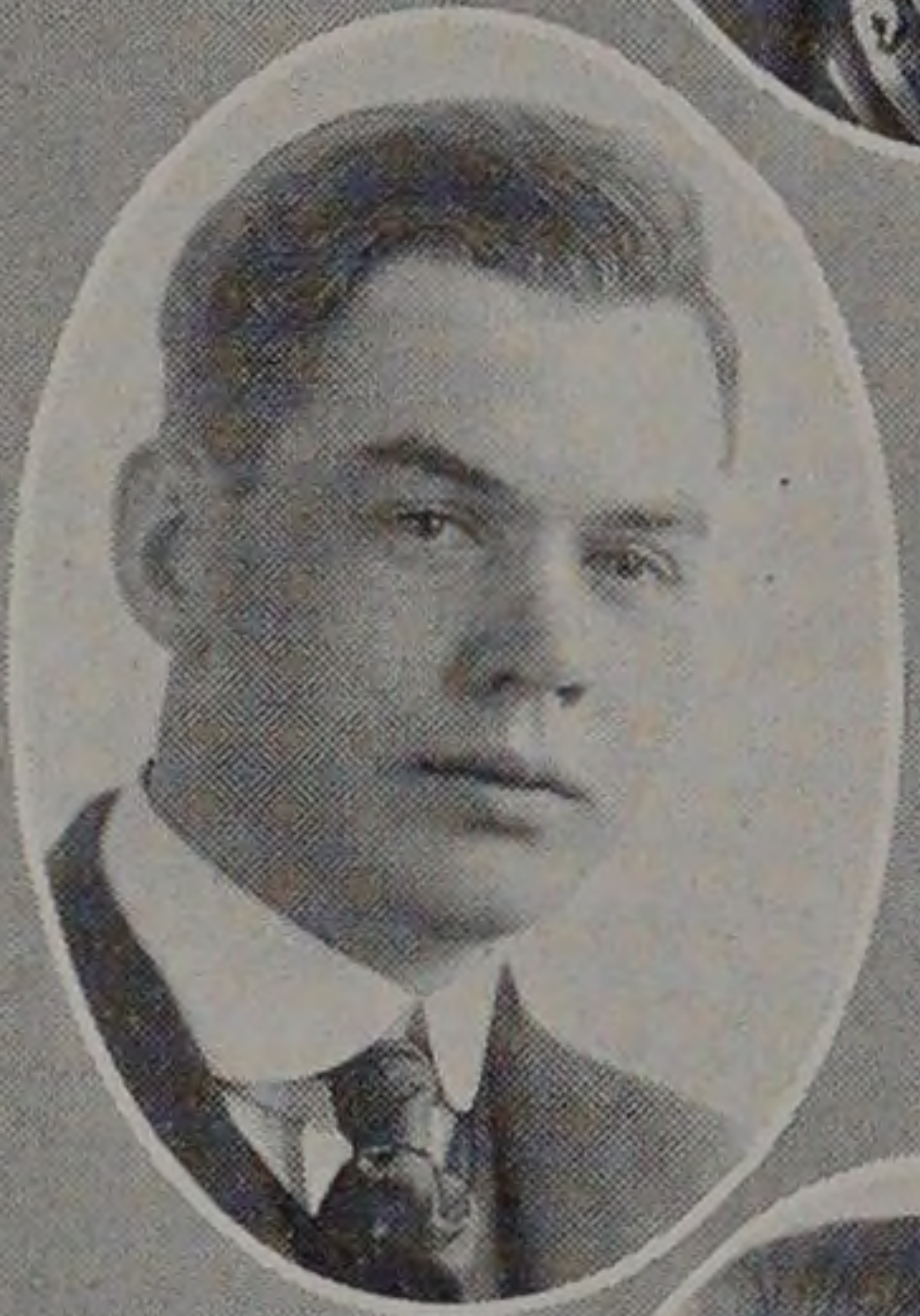
Factors Influencing the Strength of Tapped Holes. A.A.E. Research.

Born November 15, 1893, at Aurora, Missouri.

Aurora High School, '11.

Beta Phi; A.S.M.E.; Polemics; Y.M.C.A.; Band, '12-'15, Leader, '13-'14; Orchestra, '12-'15; Glee Club, '12-'15; College Track, '11-'14; Class Track, '11-'13.

"Freddie" is always full of life and school spirit, as is shown by the above list, even if he is from Missouri. His chief pastime is in driving and repairing automobiles, and he has had considerable experience with motor boats.



1915