

THE CLASSES

B.S. in M.E.

FRANK G. COOBAN

Volumetric Efficiency of a Packard Six-Cylinder Motor.

Born May 6, 1893, at Chicago, Illinois.

Armour Scientific Academy, '10.

Delta Tau Delta; Skull and Chain; Radical X; "A" Club; A.S.M.E.; College Baseball, '11-'13; Class Baseball, '11-'14; Social Committee, '11-'12; Ass't. Manager Glee Club, '11-'12; Business Manager, '12-'13; Senior Marshall, '13-'14; Board of Athletic Control, '13-'14, Secretary, '14-'15.

"Duke" has always been prominent in the social activities of the class, and in addition, has come to be known as one of the real students among the Mechanicals. His popularity in the school is shown by the above record, which is one to be proud of.

CLIFFORD D. WIGHT

Effect of Varying Compression on Efficiency and Fuel Consumption of a Gas Engine.

Born May 18, 1893, at Trinidad, Colorado. Died March 17, 1915.

Hyde Park High School, Chicago, '11.

Sigma Kappa Delta, A.S.M.E.; Y.M.C.A.; Armour Glee Club, '14-'15; Polemics; Junior Play; Class Secretary, '13-'14.

After trying several colleges, Wight decided to finish his college work at Armour, and has done so with much credit to himself. He is a conscientious student, and has not permitted his studies to keep him from participating in the various activities of school life, where he has made his presence felt.

JOHN R. LEVALLY

Relation Between Rate of Combustion and Draft Pressure for Chain Grate Stoker Applied to 350-H.P. Sterling Boiler.

Born July 6, 1892, at Chicago, Illinois.

University High School, Chicago, '09.

Tau Beta Pi; Radical X; A.S.M.E.; Y.M.C.A.; Glee Club, '13-'14; Leader Glee Club, '14-'15; Senior Fulcrum Representative, '14-'15.

John is one of the most popular fellows in Armour, as well as a fine student. He is one of the "Regular Armour Men" and is a leader in school affairs. He is one of those who have had practical work before entering school, having worked for the Rumeley Company, Wisconsin Steel Company and Crane Company at various times before and since he has entered Armour.

WILLIAM M. BREADY

Construction of Rear-Wheel Dynamometer and Horse-Power Meter and Test of Halladay Chassis.

Born September 20, 1894, at Chicago, Illinois.

Lake High School, Chicago, '11.

A.S.M.E.; Y.M.C.A.; Polemics; Class Baseball, '11-'14; Class Basketball, '11-'14; College Basketball, '14-'15; Athletic Editor, 1915 Cycle; Class Cheer Leader, '13-'15.

"Bill" is one of the youngest of the Mechanical class, and is a booster every minute. He always finds time to turn out posters or other art work whenever it is needed. How he does it is a mystery, as he does enough outside work to kill an ordinary man.

FRED L. BREWER, JR.

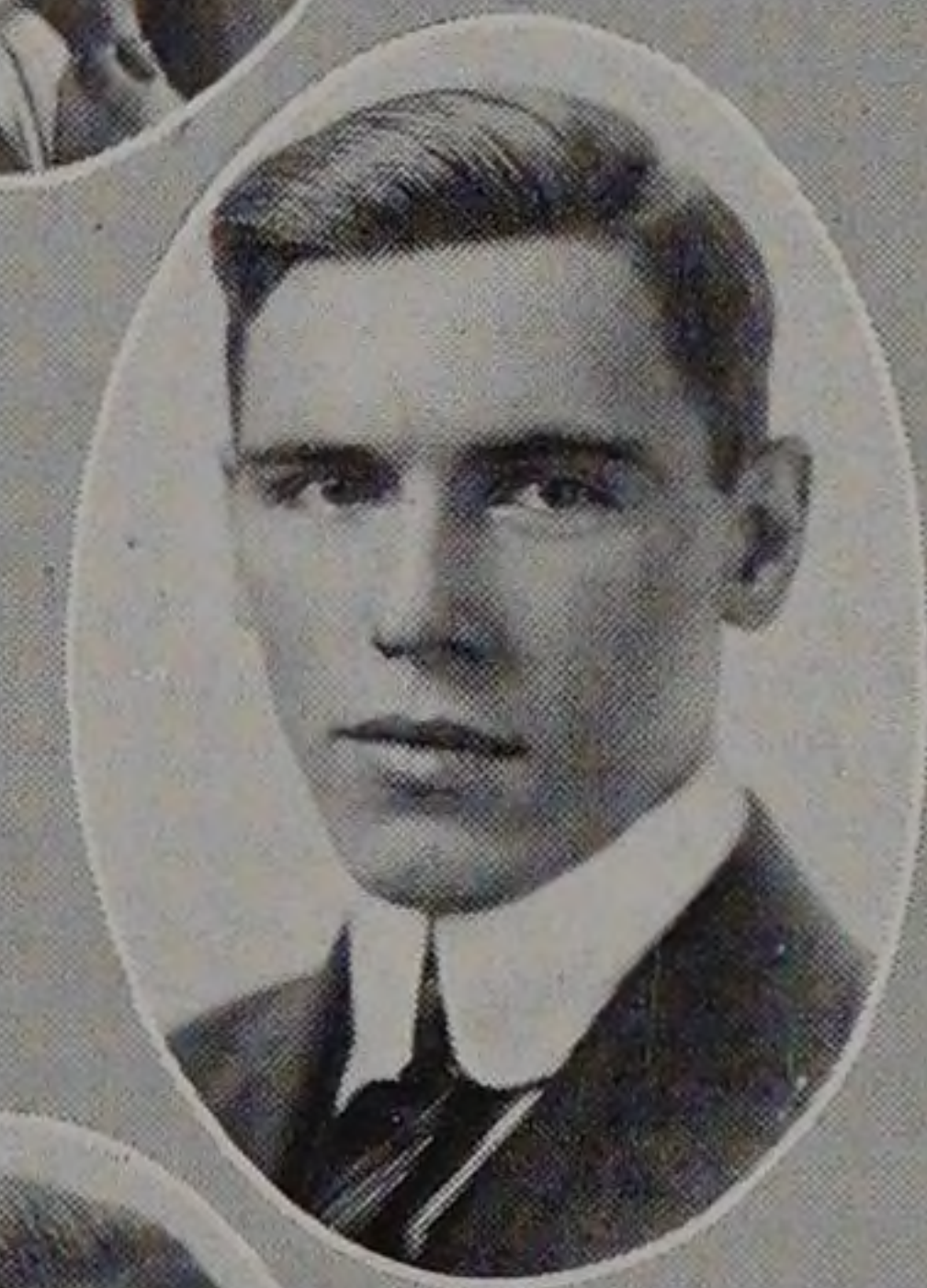
Comparative Tests of Multi-vane Blower Impellers.

Born December 12, 1892, at Chicago, Illinois.

Armour Scientific Academy, '10.

Phi Kappa Sigma; Radical X; A.S.M.E.; Mandolin Club; Y.M.C.A.; Polemics; Wrestling Squad, '13-'14; Class Baseball, '11-'14; Class Basketball, '11-'15; Class Track, '12-'14; 1914 Cycle Staff; President A.R.A., '13-'14; Chairman Song Contest Committee.

"Doc" is a typical Armour man, equally at home in overalls or full dress, a gentleman and a real man, and a good student besides.



1915