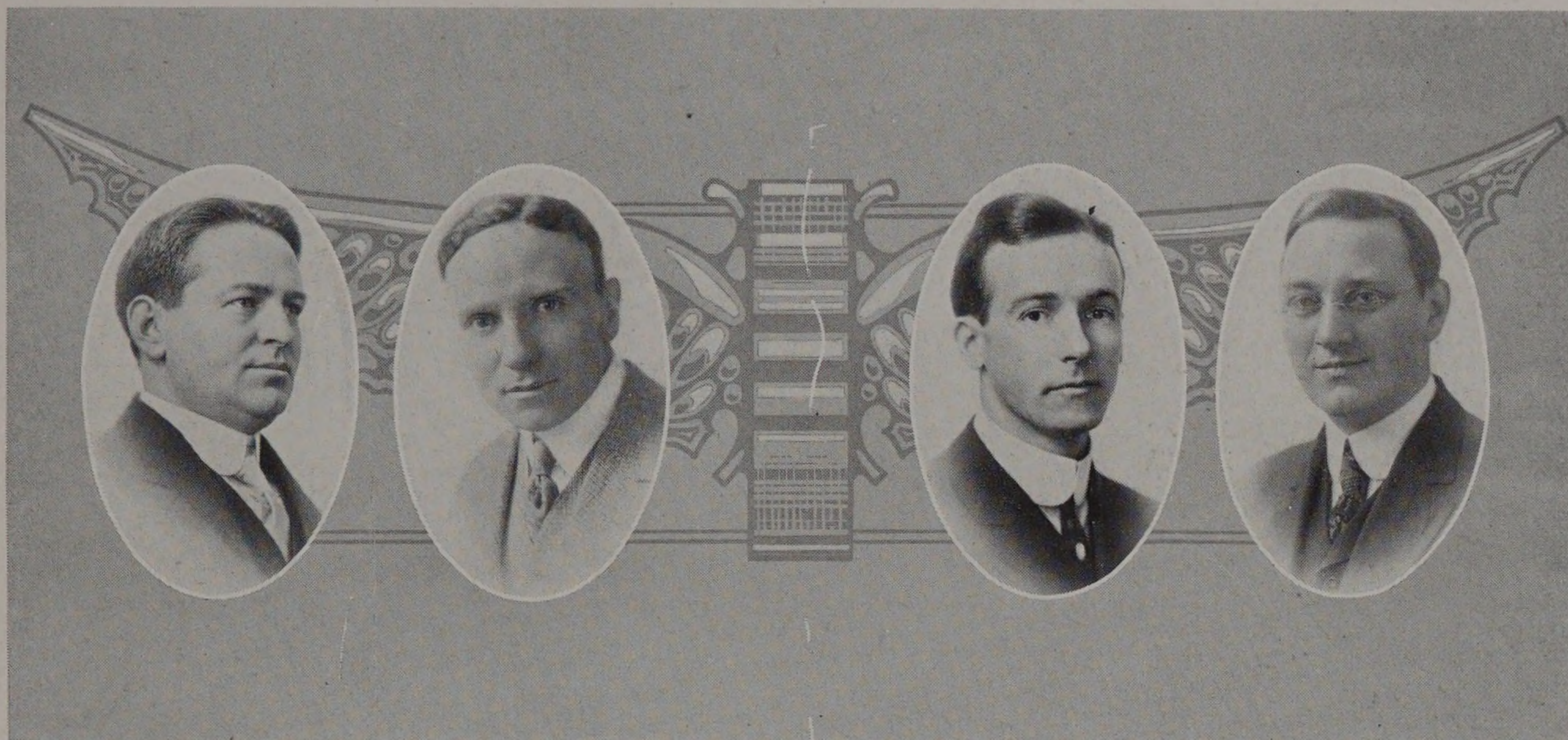


# THE INSTITUTE



## EUGENE EDWARD GILL.

Assistant Professor of General Chemistry.

Birthplace, Boring, Maryland.

Ph.B., Dickinson College, 1897. Ph.D., Johns Hopkins University, 1909.

Phi Beta Kappa.

Member of American Chemical Society.

Research Work on the "Determination of Osmotic Pressure of Cane Sugar Solutions."

Residence, 5739 Maryland Avenue.

## GEORGE EVERETT MARSH.

Assistant Professor of Electrical Engineering.

Birthplace, Georgetown, Colorado.

S.B., Massachusetts Institute of Technology, 1902. E.E., Armour Institute of Technology, 1912.

Member of American Institute of Electrical Engineers and American Electro-Chemical Society.

Residence, 445 East 34th Street.

## JAMES CLINTON PEEBLES.

Assistant Professor in Experimental Engineering.

Birthplace, Dreghorn, Scotland.

B.S., Armour Institute of Technology, 1904; E.E., 1908; M.M.E., Cornell University, 1908.

Gamma Alpha, Sigma Xi, Tau Beta Pi, Sigma Kappa Delta.

Research Work on "An Oscillograph Study of Commutation."

Residence, 436 West 72nd Street.

## JOHN CORNELIUS PENN.

Assistant Professor in Civil Engineering.

Birthplace, Wetering, Netherlands.

B.S., Armour Institute of Technology, 1905; C.E., 1910.

Tau Beta Pi, Omega Lambda.

Associate Member Western Society of Engineers.

Residence, 11344 Eggleston Avenue.