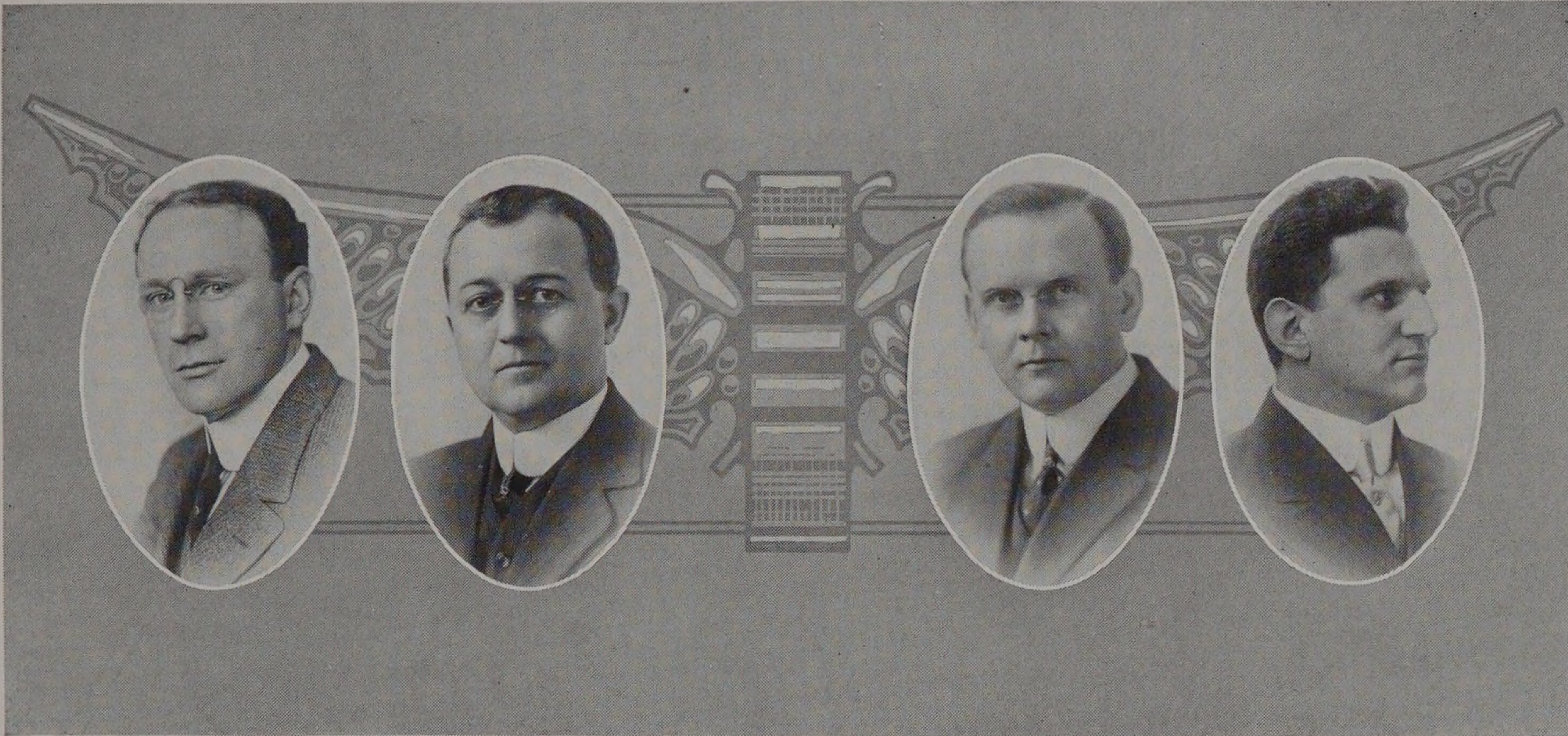


# THE INSTITUTE



JOSEPH BERNARD FINNEGAN.  
Associate Professor of Fire Protection Engineering.  
Birthplace, Stoneham, Massachusetts.  
S.B., Massachusetts Institute of Technology, 1904.  
Member of National Fire Protection Association.  
Residence, 552 East 50th Street.

CHARLES EDWARD PAUL  
Professor of Mechanics.  
Birthplace, Belfast, Maine.  
S.B., Massachusetts Institute of Technology.  
Theta Xi.  
Member of American Society of Mechanical Engineers; American Society for Testing Materials; Society for the Promotion of Engineering Education.  
Author of Numerous Articles on Concrete Construction and Strength of Materials.  
Research Work on "Chimney Draft."  
Residence, 6238 Ellis Avenue.

DAVID PENN MORETON,  
Associate Professor of Electrical Engineering.  
Birthplace, Moscow, Ohio.  
B.S., Armour Institute of Technology, 1906; E.E., 1910.  
Tau Beta Pi.  
Member of American Institute of Electrical Engineers, and Society for the Promotion of Engineering Education.  
Author of "Practical Applied Electricity."  
Residence, 56 West 34th Street.

BENJAMIN BALL FREUD.  
Associate Professor of Organic Chemistry.  
Birthplace, Chicago, Illinois.  
B.S., University of Chicago, 1904.  
Phi Beta Kappa, Sigma Xi.  
Member of American Chemical Society.  
Physio-Organic Research on "Salt Effect in Catalysis," "Oxidation and Vulcanization of Vegetable Oils," "Manufacture of Sponge Rubber" and "A Physio-Chemical Study of Permanganate Oxidation."  
Residence, 703 East 50th Place.