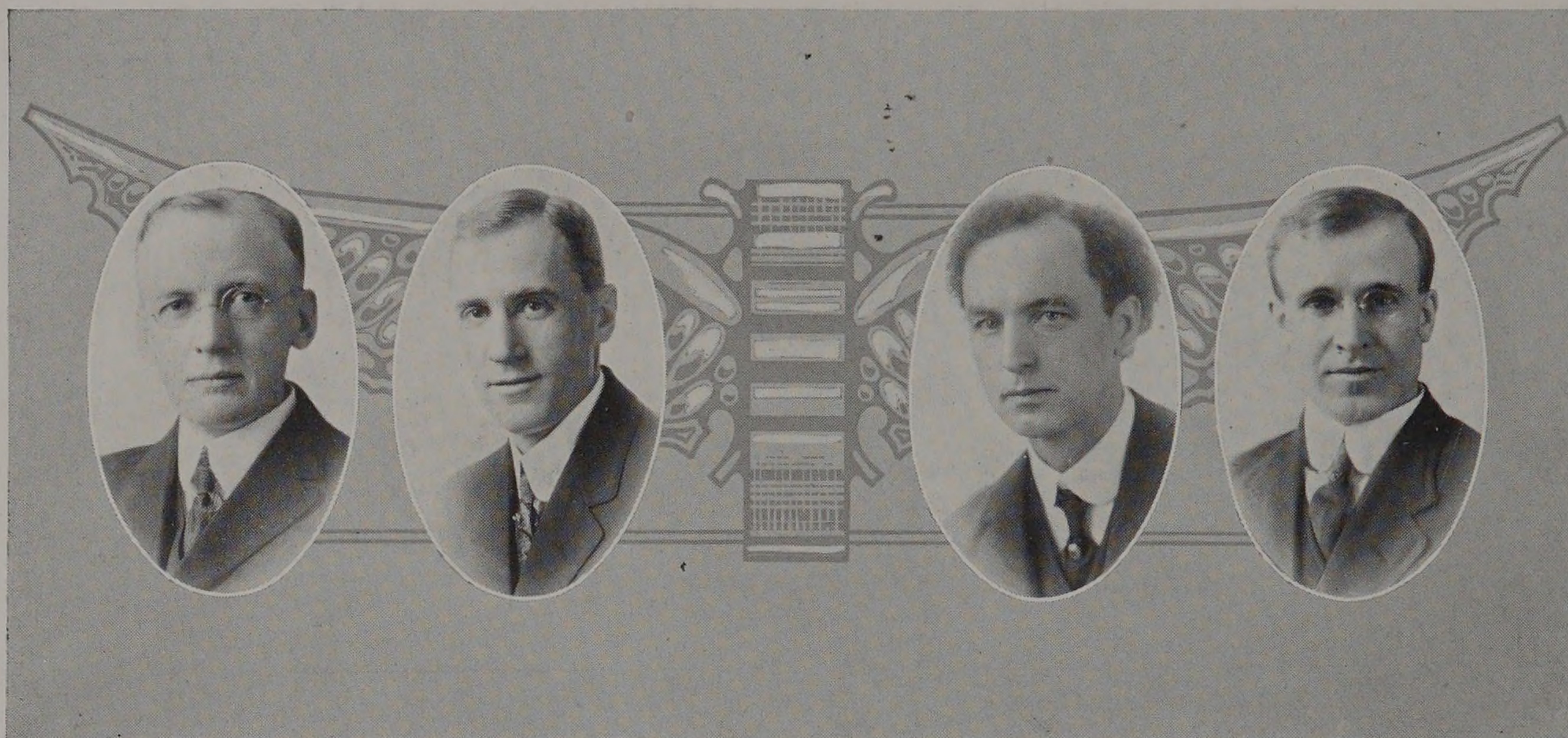


# THE INSTITUTE



## MELVILLE BAKER WELLS.

Associate Professor of Bridge and Structural Engineering.

Birthplace, Commiskey, Indiana.

B.C.E., Purdue University, 1894; C.E., 1895.

Phi Delta Theta; Tau Beta Pi.

Member of Western Society of Engineers.

Author of "Steel Bridge Designing."

Residence, 11310 S. Oakley Avenue, Chicago, Illinois.

## ROBERT VALLETTE PERRY.

Associate Professor of Machine Design.

Birthplace, Hartford, Connecticut

B.S., Armour Institute of Technology, 1897; M.E., 1902.

Tau Beta Pi; Omega Lambda.

Residence, 436 West 66th Street.

## THOMAS EATON DOUBT

Associate Professor of Physics.

Birthplace, Louisville, Kentucky.

B.S., Nebraska Wesleyan University, 1892. M.A., University of Nebraska, 1896.

Ph.D., University of Chicago, 1904. Fellowships at University of Nebraska and University of Chicago.

Sigma Xi.

Fellow of the American Association for the Advancement of Science; Member of the American Physical Society.

Research Work on Absolute Color Equation, Velocity of Light and Spectrum Analysis.

Residence, 5402 Drexel Avenue.

## CHARLES WILBUR LEIGH

Associate Professor of Mathematics.

Birthplace, Peoria, Illinois.

B.S., University of Illinois. 1897.

Phi Gamma Delta; Tau Beta Pi.

Author of "A Text Book on Trigonometry—Solid Geometry;" "Commercial Arithmetic" for the American School of Correspondence.

Residence, 7320 Lafayette Avenue.