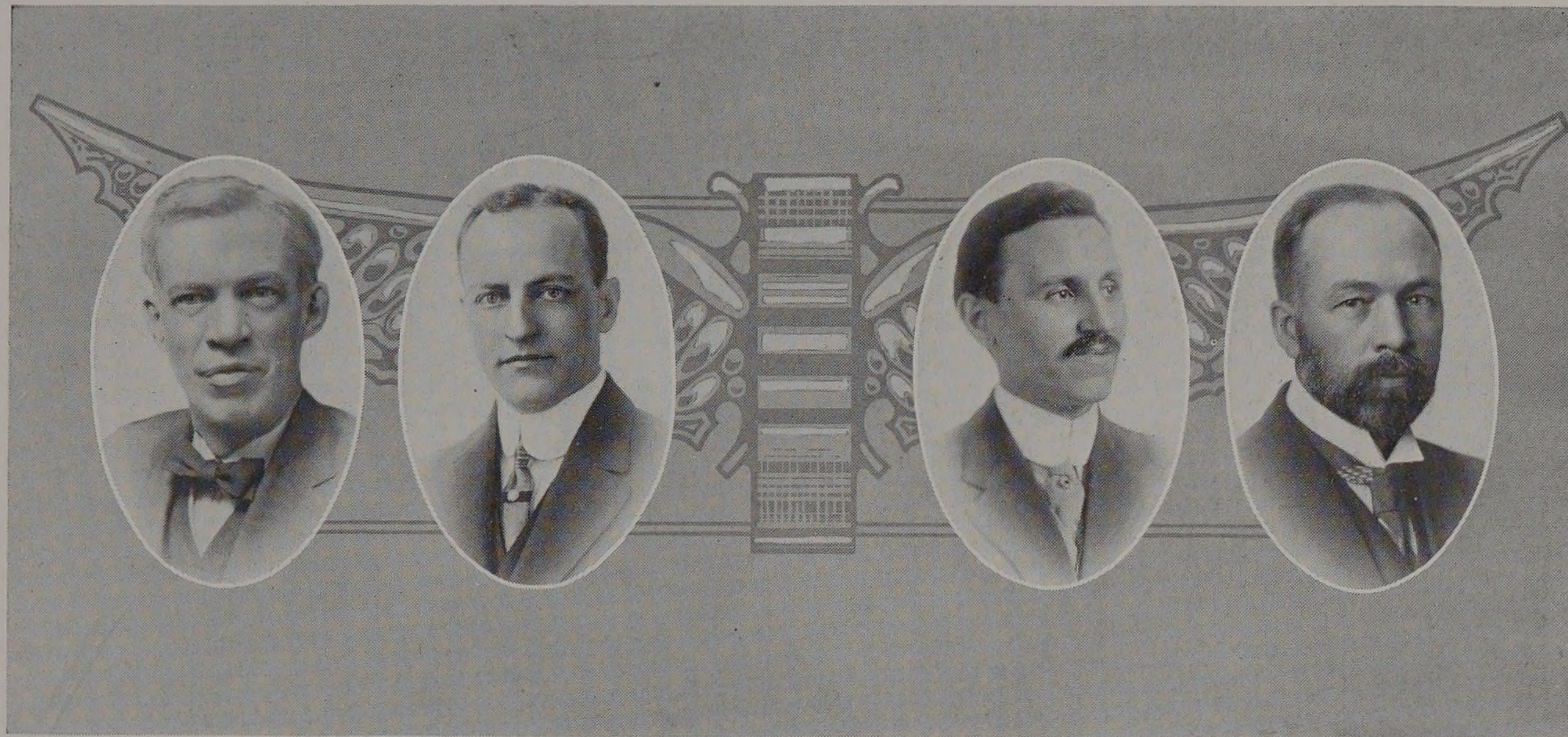


THE INSTITUTE



ALFRED EDWARD PHILLIPS

Professor of Civil Engineering.

Birthplace, Rouse's Point, New York.

A.B. and C.E., Union University, Schenectady, N.Y., 1887; A.M., 1890; Ph.D., 1894.

Phi Delta Theta. Sigma Xi. Tau Beta Pi.

Member of American Society of Civil Engineers.

Residence, 307 Davis Street, Evanston.

GEORGE FREDERICK GEBHARDT

Professor of Mechanical Engineering.

Birthplace, Salt Lake City, Utah.

A.B., Knox College, 1895. M.F., Cornell University, 1896. A.M., Knox College, 1897.

Phi Delta Theta, Tau Beta Pi.

Member of American Society of Mechanical Engineers; Western Society of Engineers; National Association of Stationary Engineers.

Residence, 5302 Blackstone Avenue.

GEORGE LAWRENCE SCHERGER.

Professor of History and Political Science.

Birthplace, Lawrenceburg, Indiana.

A.B., University of Indiana, 1894. A.M., Universities of Leipzig and Berlin (1895-98). Ph.D., Cornell University, 1899.

Member of American Historical Association; National Geographical Association; Mississippi Valley Historical Society. City Club.

Author of "Evolution of Modern Liberty."

Research Work on "French and American Declaration of the Rights of Man."

Residence, 436 East 46th Street.

GUY MAURICE WILCOX

Professor of Physics.

Birthplace, Kansas City, Kansas.

A.B., Carleton College, 1891. A.M., University of Wisconsin, 1902.

Member of American Physical Society and Fellow of the American Association for the Advancement of Science.

Author of "Physics Laboratory Manual."

Research Work on "Optical Rotatory Power of Sugar in Non-Aqueous Solutions."

Residence, 5225 Ingleside Avenue.