



THE LIBRARY

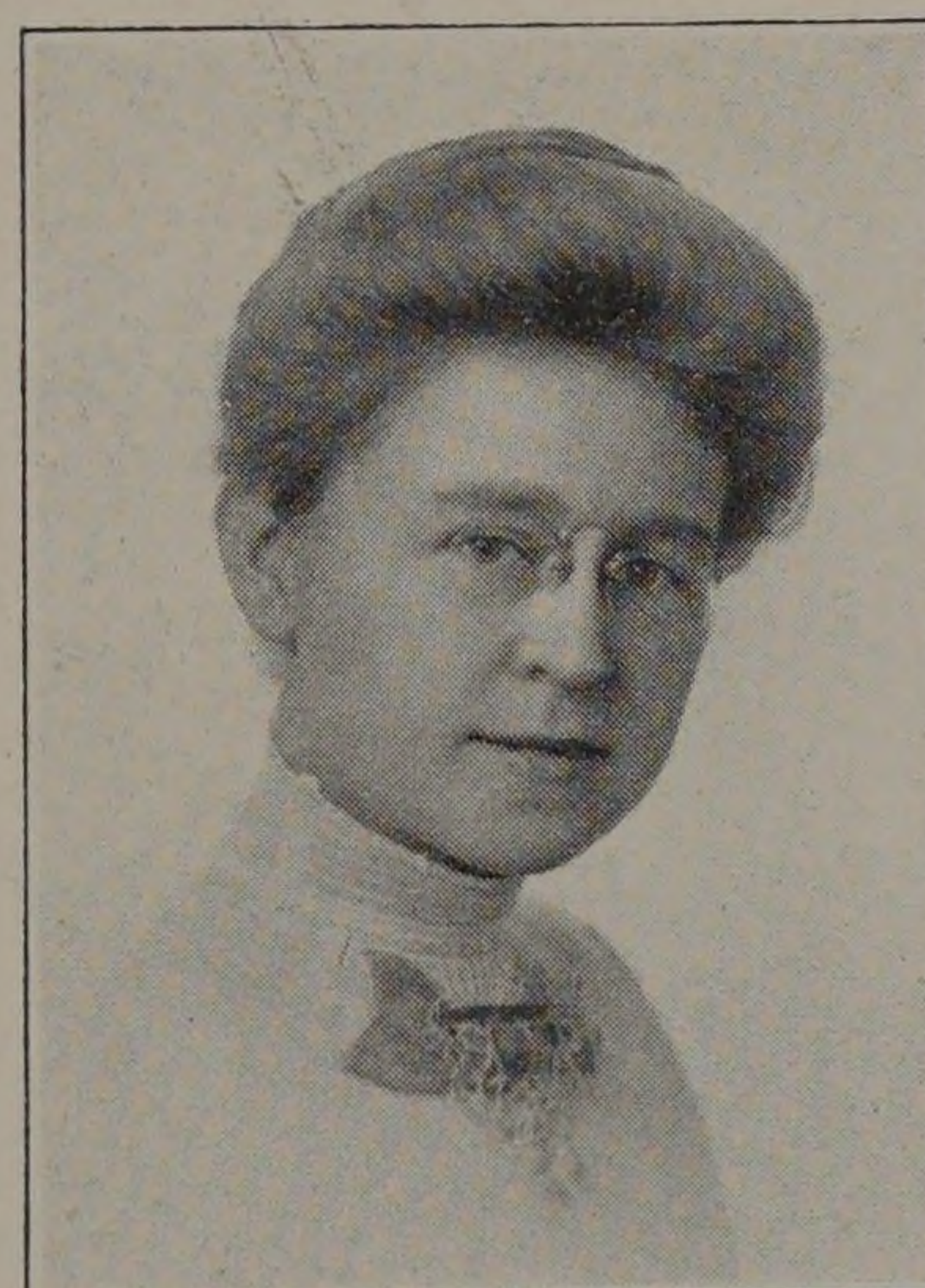
Mrs. Julia Beveridge,
Librarian.

Miss Gertrude Veblen,
Assistant Librarian.

The Library contains more than 27,000 volumes, and 4,000 pamphlets; 180 periodicals are taken, kept on file and bound. It is primarily a reference library for engineering students, but is also strong in science, history, literature, philosophy and economics. It is well supplied with current literature, including the transactions and proceedings of learned societies and the chief literary and scientific periodicals.

Direct access to the shelves of the Library is allowed to the students in order that they may better familiarize themselves with the use of the library.

An important feature of the work done by the Library staff is the valuable help offered to the various departments of instruction by the preparation of Engineering Bibliographies.



MISS GERTRUDE VEBLEN