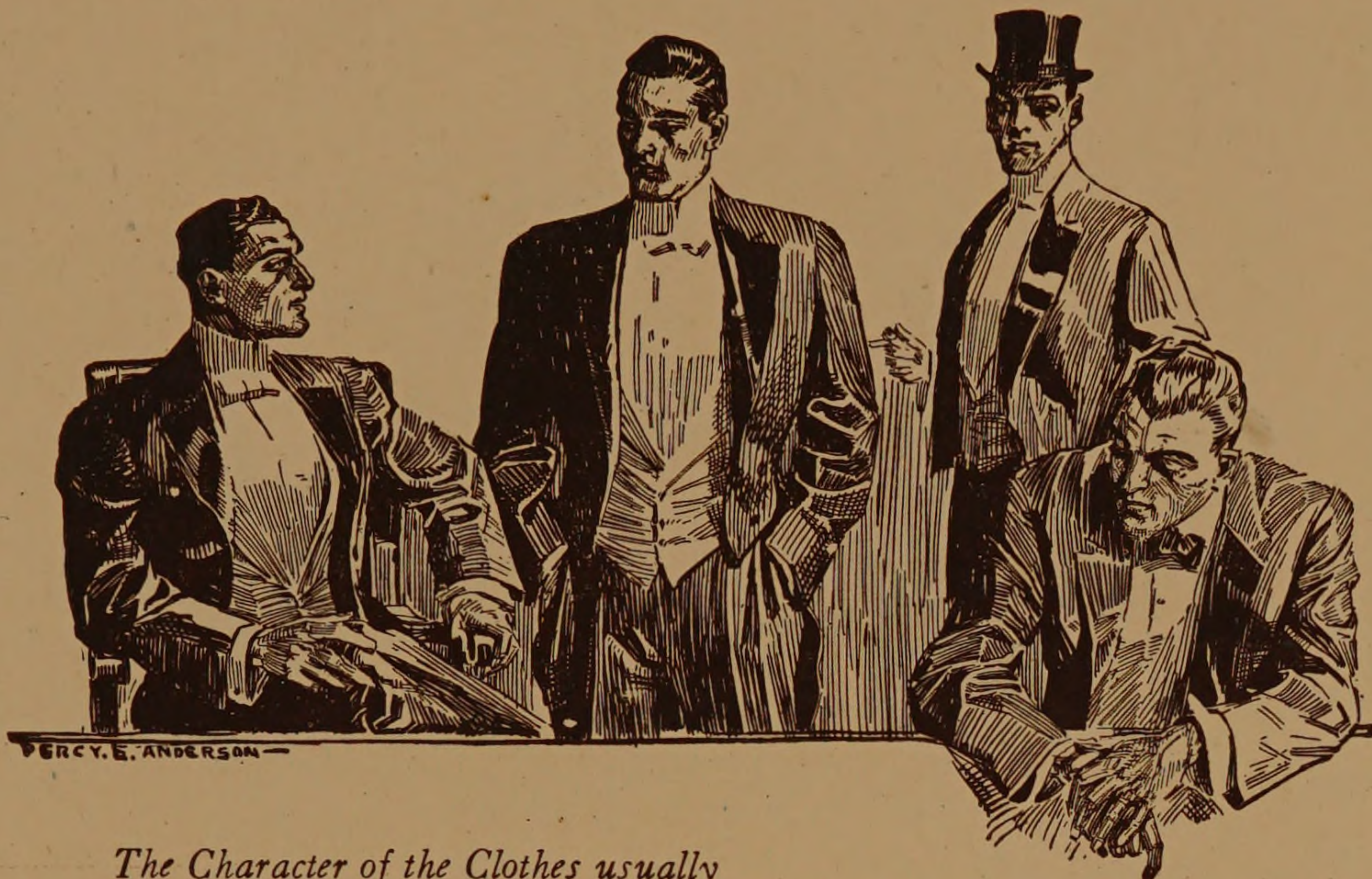


"MOSSLER CLOTHES"



*The Character of the Clothes usually
indicate the Character of the Man*

Our Evening Dress Clothes for this season have a softness, both in tone and material, draping the form so as to give an easy graceful pose.

We are specializing an Evening Dress Suit, together with Tuexedo Coat, (silk lined throughout) Complete Outfit, \$55. Suit only (Tuxedo or Evening Dress) \$35.

THERE is a decided leaning toward the English styles at all the leading universities. Few houses in America can supply this demand; the styles shown are usually either "too American" or "too English." The "*Mossler Clothes*" Chicago, are a happy medium and are accepted as standard at all the leading universities.

We are pleased to submit samples and a model garment on request. Merely the chest and waist measurements are necessary to assure a perfectly draped garment. The "*Mossler Models*" vary in character and styles. We select the model according to the description of the prospective patron--whether tall, short, lean, stout or regular built.

Mossler Co.

19 Jackson Boulevard, East
Chicago