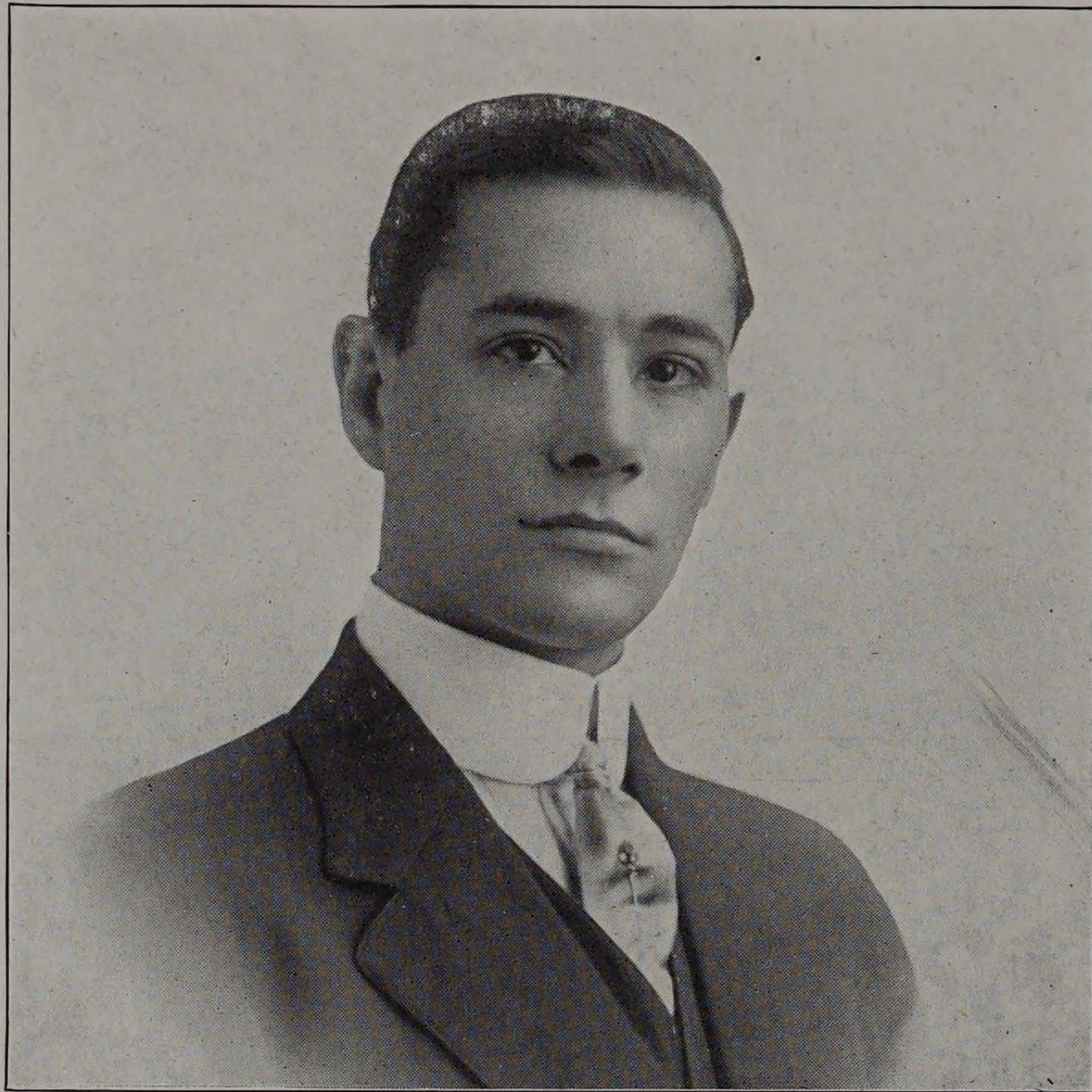




SENIOR CLASS BOOK 1912.



ELMER LUCIUS CANMAN

Thesis: *Investigation of the Flow of Air in Pipes.*

Omega Lambda

Armour Branch, A. S. M. E.

Ass't. Business Manager 1910 Integral.

Chapin Club, President (4)

"Can" is the little king of Chapin Club and he certainly deserves an A when it comes to collecting time for billiards. "They ain't going to slip anything over on me," he says and right after class he hikes right over to Chapin Hall and catches Oehne and Noren for about an hour's time. However "Can" means well and certainly does his part to make Chapin Club the ideal student recreation spot.

Elmer joined this world on January 5, 1888 in East St. Louis but didn't stay there very long as the entire family soon moved bag and baggage to this city and settled over on the north side. The only reason they went so far out according to Can was to make him get up at six o'clock in the morning in order to get here in time to answer present in Bowser's thermo class. Elmer is the baby of the family and his sisters knew that it would do their little black eyed baby brother a world of good to have to get up so early in the morning for then he would never have any desire to stay out later than half past nine.

Canman has been in Armour for quite some time for he spent four years in the Academy before he entered the Tech. He is a natural born rough-houser and if you don't believe it just ask any of his fraternity brothers about how he puts salt in their beds. In spite of his tendency to play jokes upon his fellows, Can is a good scout and is always ready to do his part to support different college activities. This year he is bossing Prof. Anderson and Kimball in finding out how air flows through a lot of different sizes of pipes.