

THE SENIOR CLASS BOOK

1911

Lytle L. Williams.

Electrical Engineering.

Born October 28, 1886, at Deer Lodge,
Montana.

Prepared at Granite County High
School.

Thesis Subject: Retardation Test of
Generators.

Manager of Chapin Club (3).

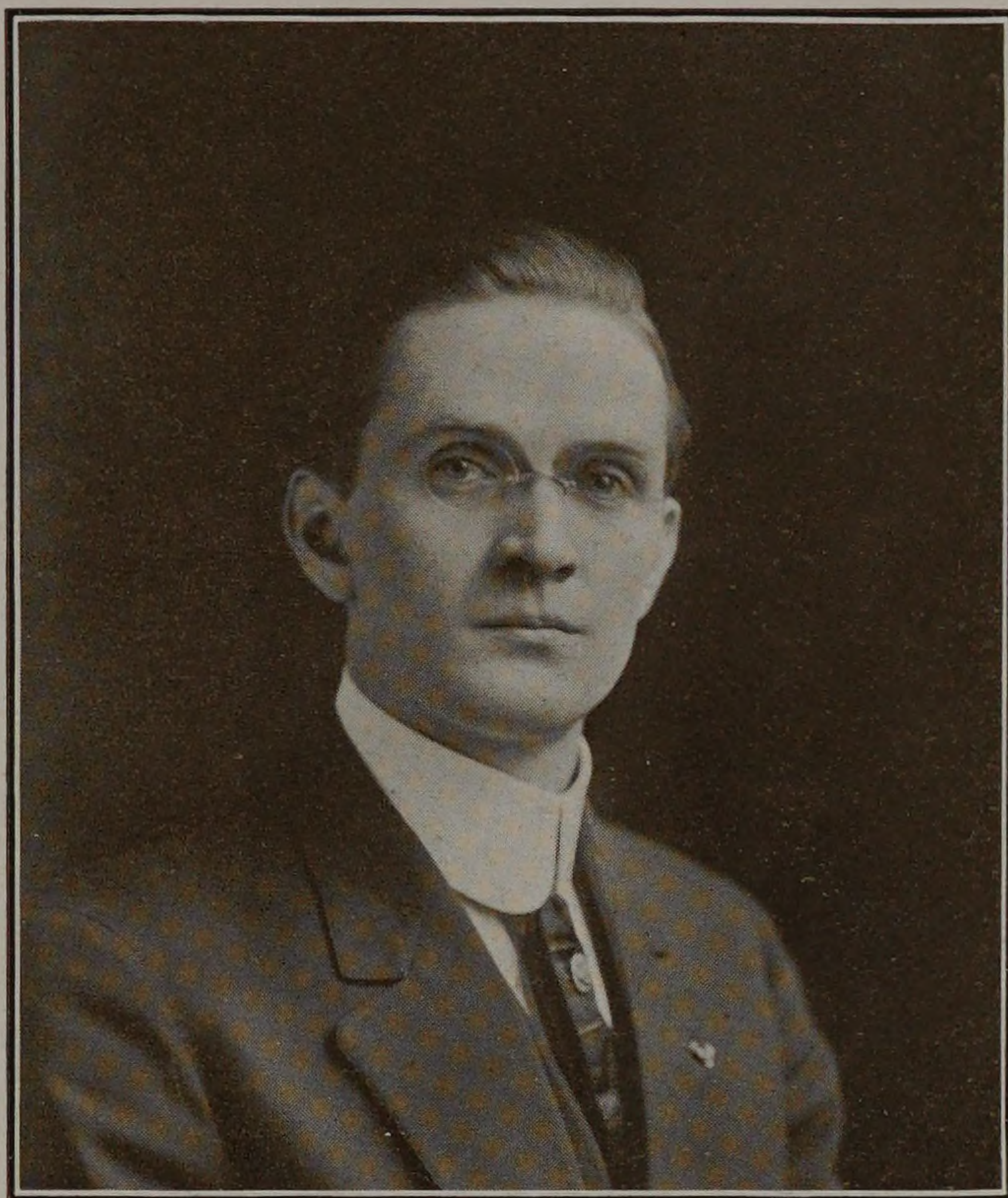
Vice-President of Class (4).

Tau Beta Pi.

Omega Lambda.

Eta Kappa Nu.

A. I. E. E.



From the broncho's saddle to an electrical engineer. Such is the romance of Lytle Lytton Williams, our honored vice-president. From far-off Montana, where this ambitious youngster was wont to chase the festive bovine over the prairies and to convert the broncho from its unregenerate ways, to the peaceful sessions in Business Law is a far cry. But it is a transformation which Lytle accomplished without batting an eye-lash.

A cheerful, hustling, handsome Westerner is Williams. Wherever there is something doing, he wants to have a hand in it, and he certainly takes a more than passive interest in the affairs of the School and Class. As King of Chapin Club he has broken up innumerable "crap" and "Kelly pool" games. He has lectured before the select audiences that attended the lectures given under the auspices of the A. I. E. E. Lyceum Bureau. He has "made" three Greek letter organizations, Tau Beta Pi, Omega Lambda, and Eta Kappa Nu. He can induce anything to run, from one of Professor Snow's motors in the Dynamo Lab to an automobile or a motor boat. As a fusser he excels; not a dance has he missed despite his strenuous School activities, and many is the soft heart he has caused to flutter. And who can blame the dear girls? Just look at those rosy cheeks and that twinkling smile and listen to the line of talk which he can, and does, hand out! Also gaze at that string of many-hued neckties which he affects!

But not only with the feminine sex does Lytle make a hit, he is well liked by his fellow-men also. A wholesome, jovial chap like he is is always welcome wherever live ones congregate. If you have not made "L. L.'s" acquaintance, that is your misfortune.

Williams, like his namesake and boon-companion, will make a cracking good engineer unless all signs fail.

"The Ladies,—God Bless 'em!"