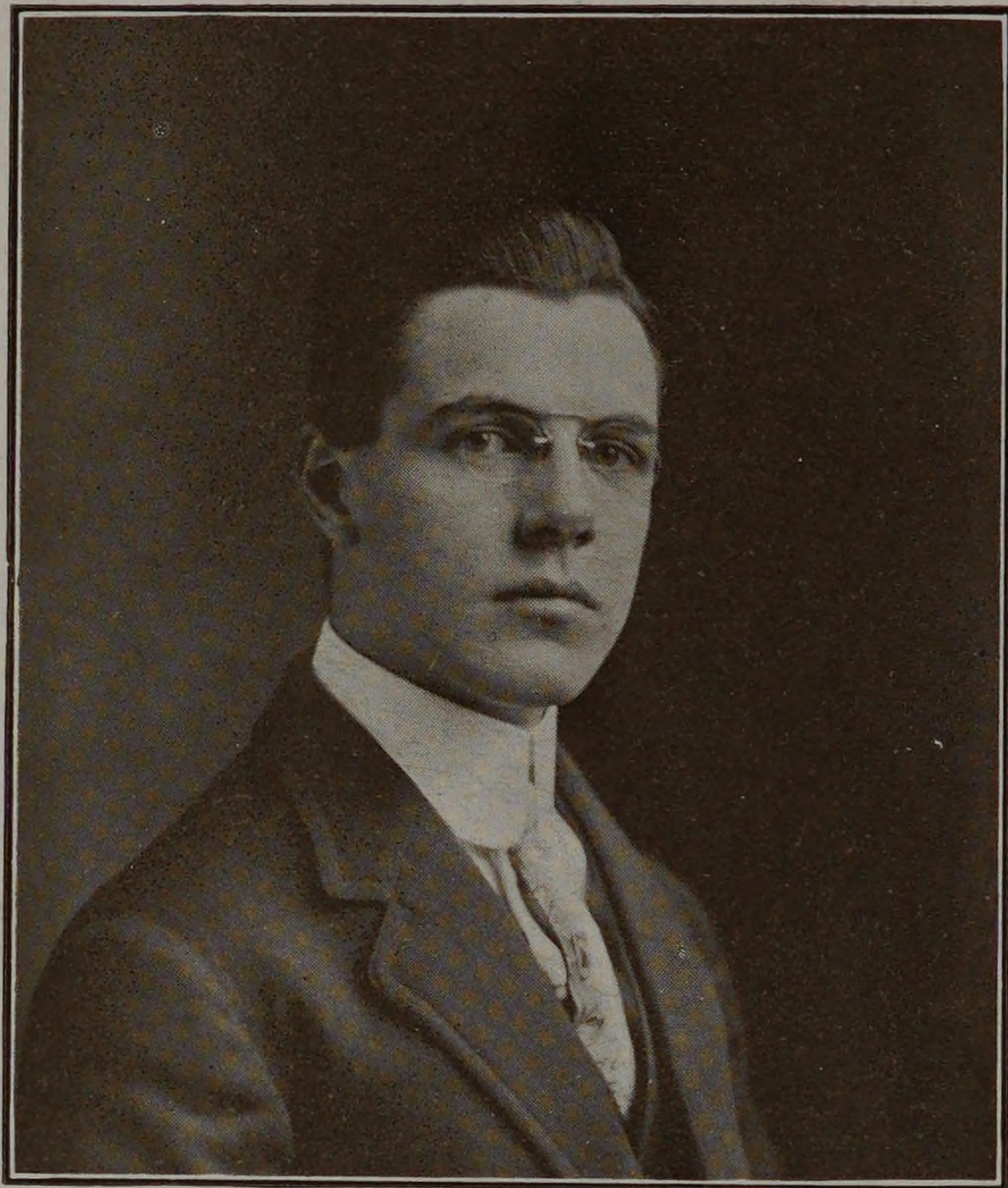


# THE SENIOR CLASS BOOK

## 1911



*Schuyler M. Smith*

Civil Engineering.

Prepared at Hyde Park High School  
and Armour Scientific Acad-  
emy.

Omega Lambda.

C. E. S.

"Smithy" came into being on April 21, 1888, at Manchester,—no, not England,—Michigan, for he is a full-bred American, as he says. He started his preparatory course at the Hyde Park High School, but this fussers' paradise being no place for a prospective engineer, he deserted it and enrolled in Armour Scientific Academy, graduating in 1906.

Schuyler is one of those tall, distinguished-looking, gentlemanly fellows that always takes things easy,—a cool and collected man. To say the least, Smithy is an energetic and hard worker, and keeps the best of them "humping themselves" to keep up with him. We have often wondered why "Schuy" is such a confirmed bachelor, for we feel sure there is nothing about him that would make a girl run, but for some reason or other he is not much of a society man. Maybe it is because Smith is such a lover of music and devotes so much of his spare time to concerts and lectures, a course which might be wise for some of us to look into.

During the summer of 1909 Smith was connected with the engineering department of the C. M. & St. P. R. R. in South Dakota and in 1910 with the C. & N. W. R. R. in Wisconsin. His work with these corporations served to give him some much-needed experience besides putting money in his purse.

Along the line of thesis activities Smithy is working diligently at a "Design of a Proposed Arch Rib Concrete Bridge for North Sheridan Road, Waukegan, Ill." That ought to keep him and his companion, Horace Butler, busy for a while, and if erected should prove a distinctive ornament for that highly ornate thoroughfare.

*"Wisely, I say, I am a Bachelor."*