

THE SENIOR CLASS BOOK

1911

Thane G. Cleaver

Civil Engineering.

Prepared at Robert A. Waller High School.

Thesis Subject: Waterproofing of Concrete by Addition of Patented Compounds.

Delta Tau Delta.

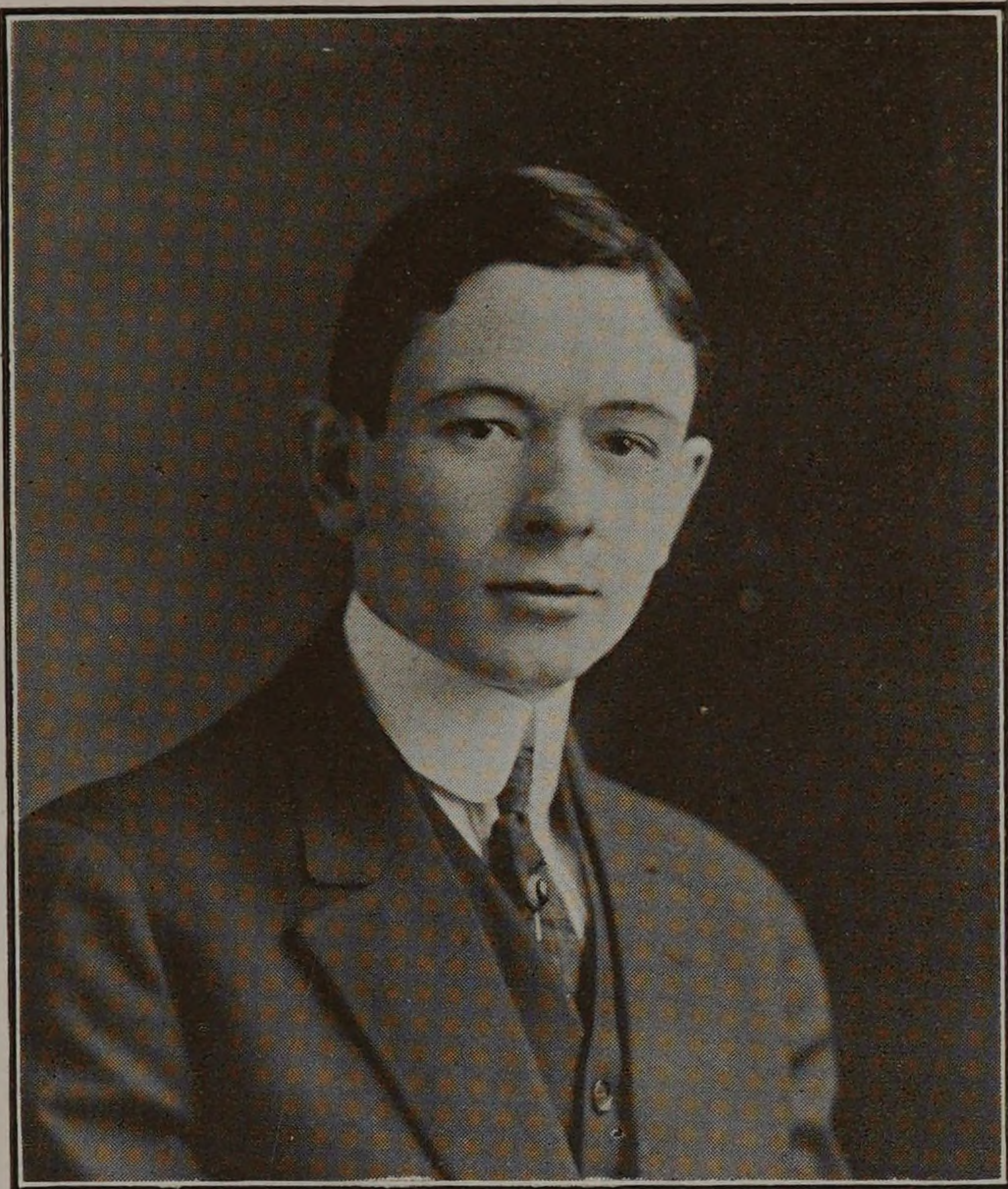
Radical X.

C. E. S.

Mandolin Club (1), Leader (3), (4).

Sphinx.

Senior Class Book Staff.



Thane Cleaver was born in Chicago on the 9th of June, 1889, his ancestry tracing back to Wales. He graduated from the Robert A. Waller High School with the Class of 1907, and straightway came to Armour.

From the start Thane has won and retained the respect of his classmates. He is a man who has little to say, but that little worth much. Conservative along all lines, he has, nevertheless, been closely allied with many of the school's affairs. He is a member of Delta Tau Delta, the Sphinx, Radical X, and the Civil Society. He has done considerable work on the Fulcrum and the 1911 Integral. Cleaver's name has long been associated with the Mandolin Club, having been one of its expert players through the seasons of '07-'08, '09-'10, and '10-'11, being also its leader in '09-'10 and '10-'11. The Club owes much of its success during the last two of the above seasons to his able and intelligent leadership.

Thane was a member of the banner Summer Camp of 1908. Finding the work greatly to his liking, he has made practical use of the training gained under "Pa" Phillips' tutorship on that memorable trip by acting as instrument man for the Union Pacific during the summers of 1909 and 1910.

Cleaver belongs to a class of men, whom the school would be better for having more of. Not only an able and conscientious student, but also active in many of the school and class doings not directly connected with his educational tasks, is Cleaver. He has done his share and a great deal more in the cause of fostering a proper college spirit at the Tech, for which we owe him a vote of thanks. He will go far and perform great things in the engineering world, after he leaves us. Our hopes are all with him.

"Versatility and Ability Linked with Reticence."