



JOHN SIMPSON REID.

*Instructor in Mechanical Drawing and Machine Design.*

Birthplace, Kilmanock, Ayrshire, Scotland. Irvine College, British Government Science and Art Schools, Glasgow, Scotland. Member of American Society of Mechanical Engineers. Author of "A Course in Mechanical Drawing," and "Machine Drawing and Elementary Machine Design." Residence, 3312 Dearborn Street.



CHARLES EDWARD BOUTWOOD.

*Instructor in Painting and Drawing.*

Birthplace, London, Eng. Studied in South Kensington Museum. Scholarship Royal Academy School, London. Studied in Paris under Bouquereau and Fleury. Member Chicago Society of Artists. Residence, Hinsdale, Ill.



PERRY A. BOND.

*Instructor in Chemistry.*

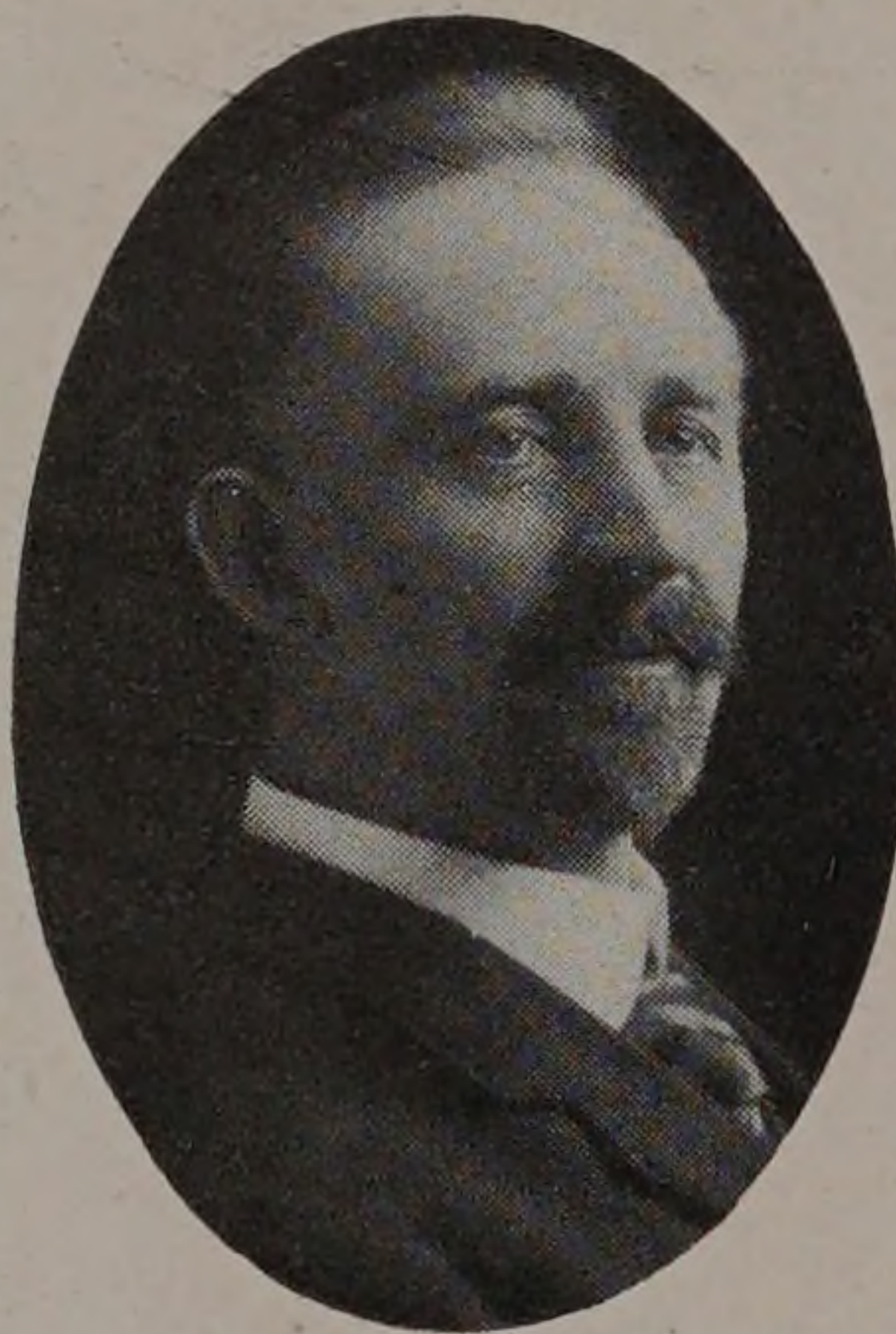
Birthplace, Storm Lake, Iowa. B. S., State University of Iowa, 1901; M. S., 1908. Sigma Xi. Original research, The Effect of the Proximity of Negative Groups on the Oxidation of the Hydrocarbon Side Chain to the Benzene Nucleus. Residence, 4042 Michigan Avenue.



J. G. H. LAMPADIUS.

*Instructor in German.*

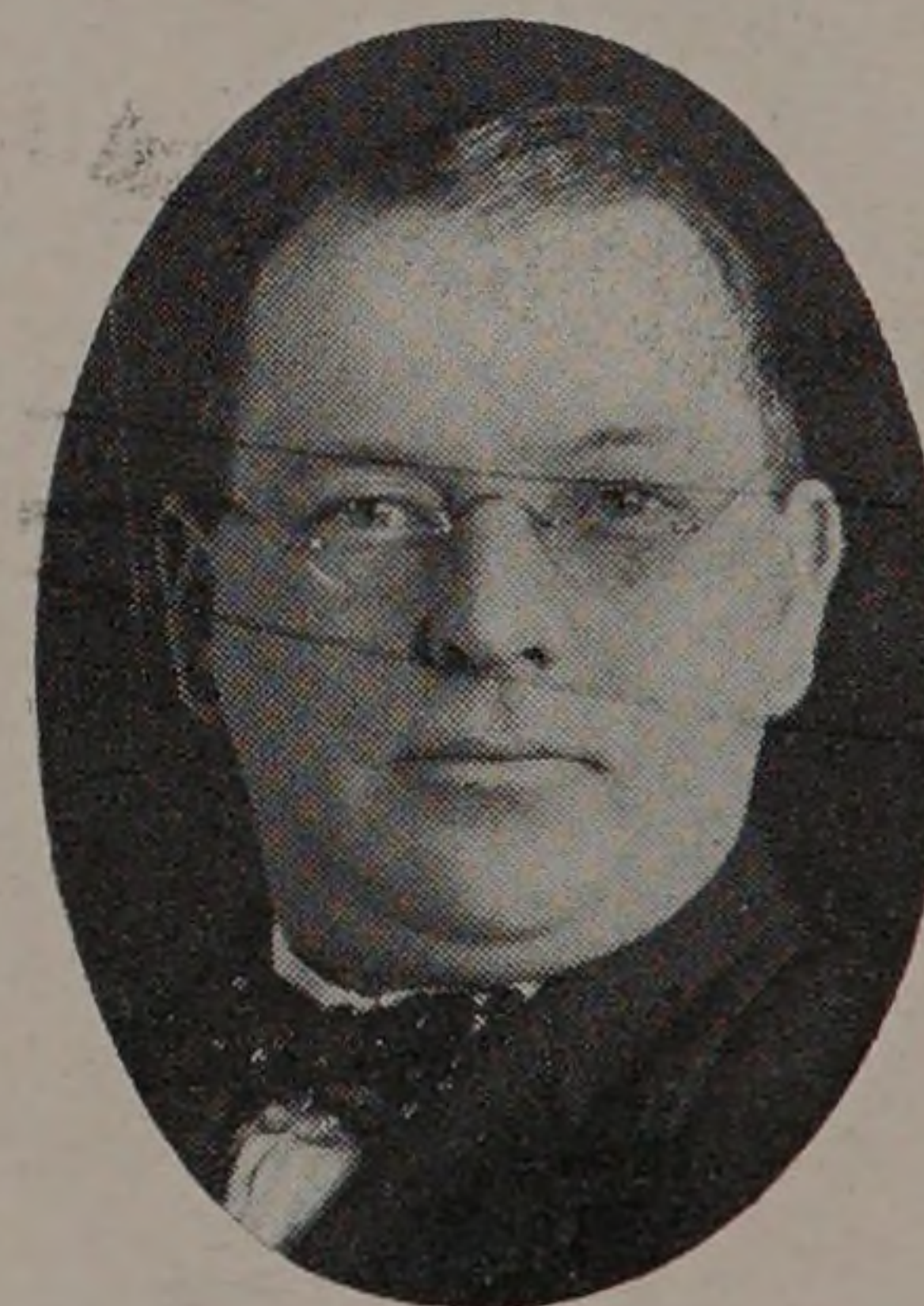
Birthplace, Leipzig, Germany. University of Leipzig, 1884-1885. A. B., University of Southern California, A. M., University of Chicago, 1900. A. M., University of Southern California, 1902. University of Oklahoma, 1904. Residence, 138 West 73rd Street.



JAMES PIERCE CUNNINGHAM.

*Instructor in Forging.*

Birthplace, Janesville, Ohio. Residence, 10124 Avenue L, South Chicago.



GEORGE EVERETT MARSH.

*Instructor in Electrical Engineering.*

Birthplace, Georgetown, Colorado. Sc. B., Massachusetts Institute of Technology, 1902. Member of American Institute of Electrical Engineers. Illuminating Society, American Fern Society. Papers on Algebraic Equations of Lissajous's Curves of All Orders, New Theorems in Combinations, High Potential Interrupter, Machines for Describing Curves, etc. Residence, 3739 Indiana Avenue.

