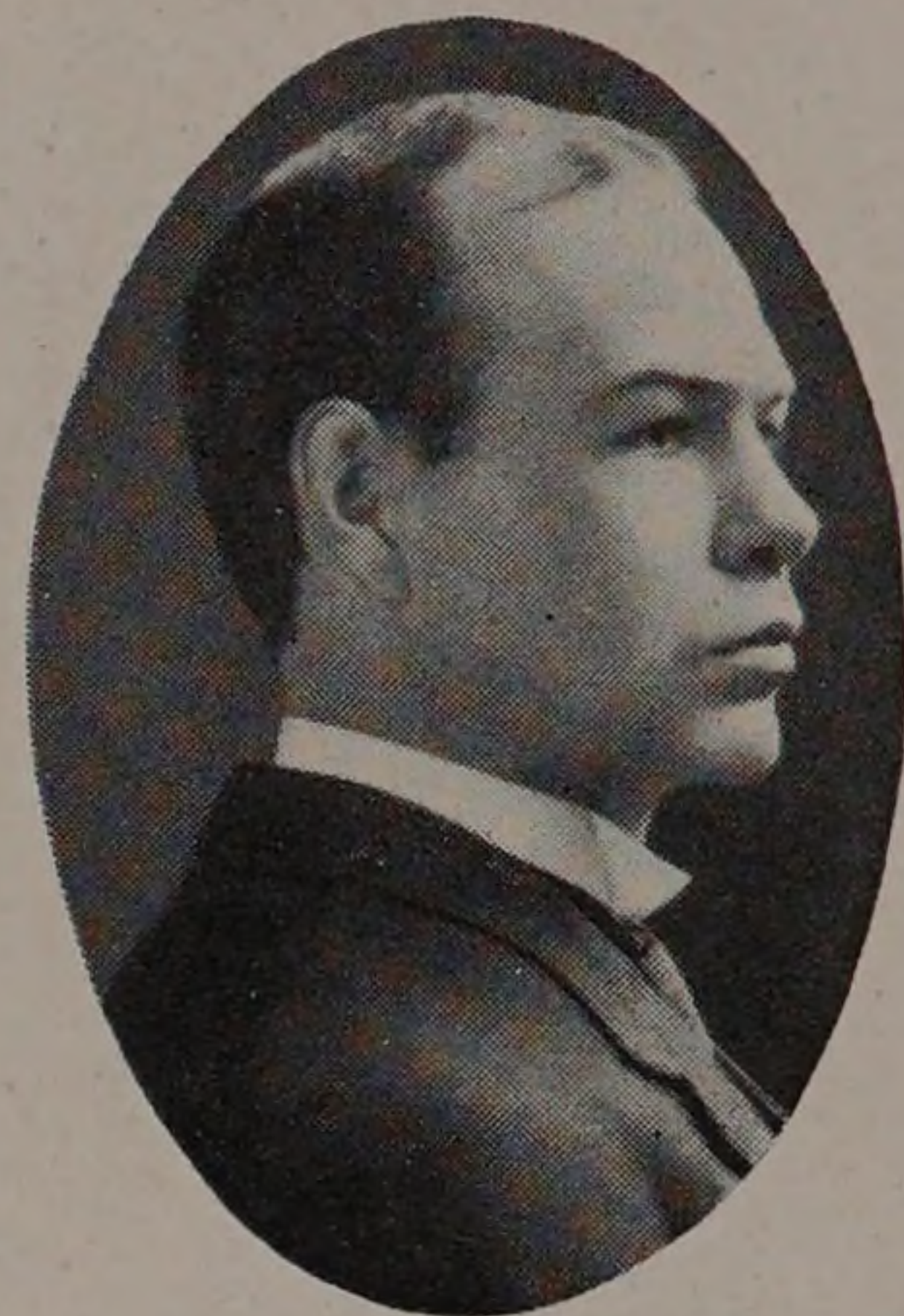


HARRY MCCORMACK.

*Associate Professor of Industrial Chemistry.*

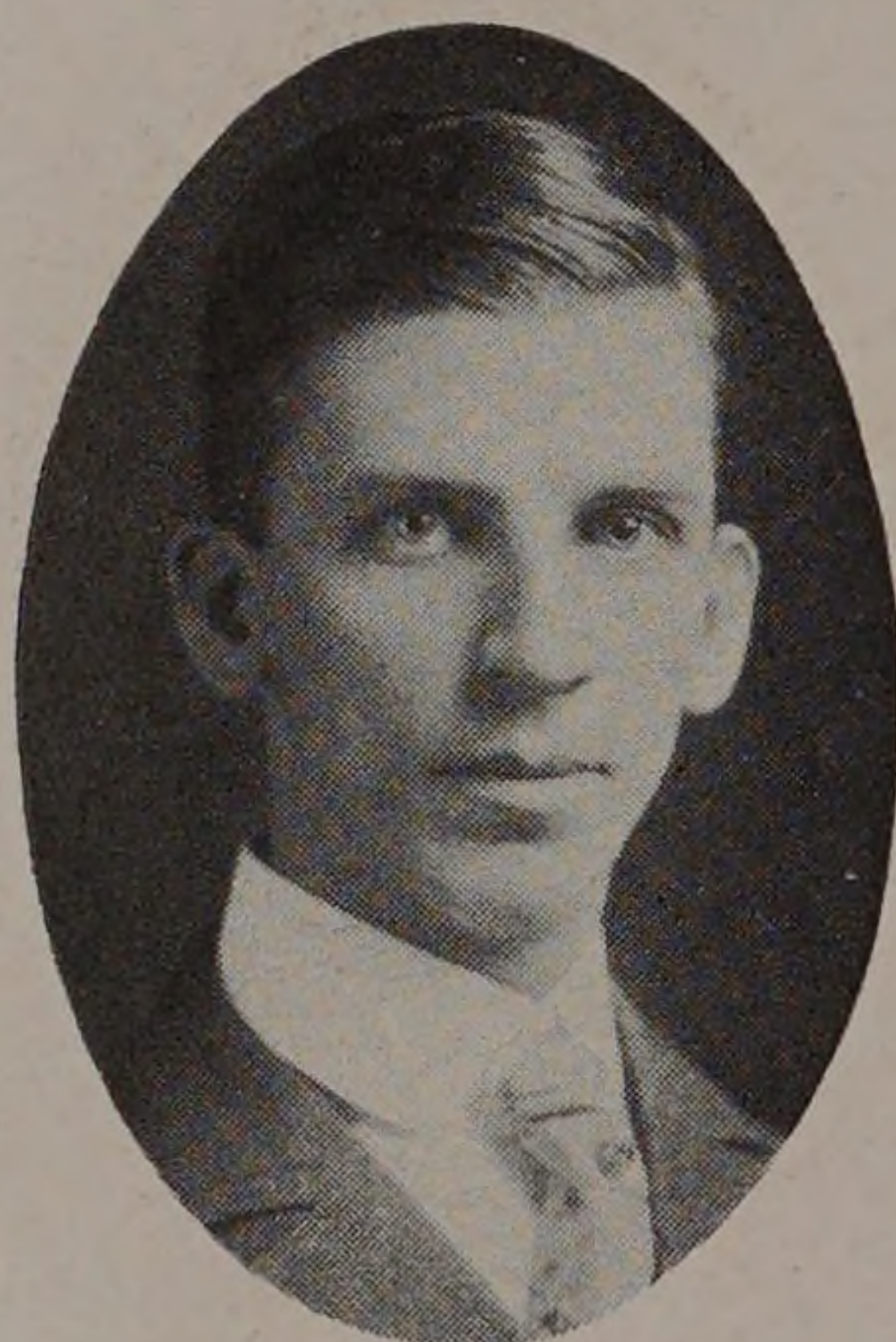
Birthplace, Spencer, Iowa. B. S., Drake University, Des Moines, Iowa, 1896. M. S., University of Illinois, 1899. Member of American Chemical Society. Author of Bulletin U. S. Department of Agriculture on Losses in Cooking Meat. Chemical Study of Water Supply of Des Moines, Iowa. Chemistry of Iowa Building Stone. Chemical Study of Melting Iron in the Foundry Cupola, and of Extracting Sugar from Dried Beet Cossettes. Residence, 5736 Drexel Avenue.



JOSEPH B. FINNEGAN.

*Associate Professor of Fire Protection Engineering.*

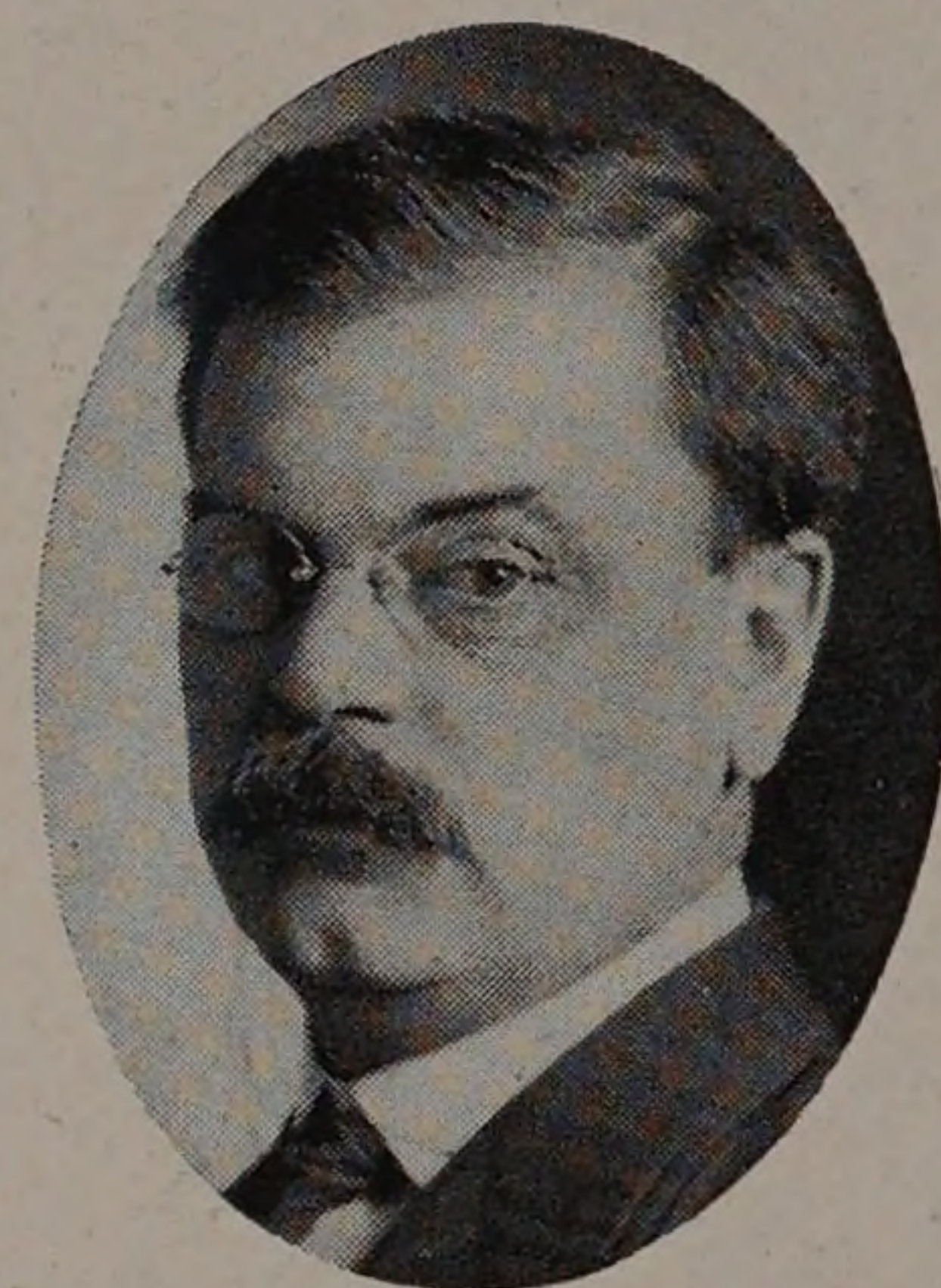
Birthplace, Stoneham, Massachusetts. S. B., Massachusetts Institute of Technology, 1904. Residence, 911 East 50th Street.



ALEXANDER PELL.

*Assistant Professor of Mathematics.*

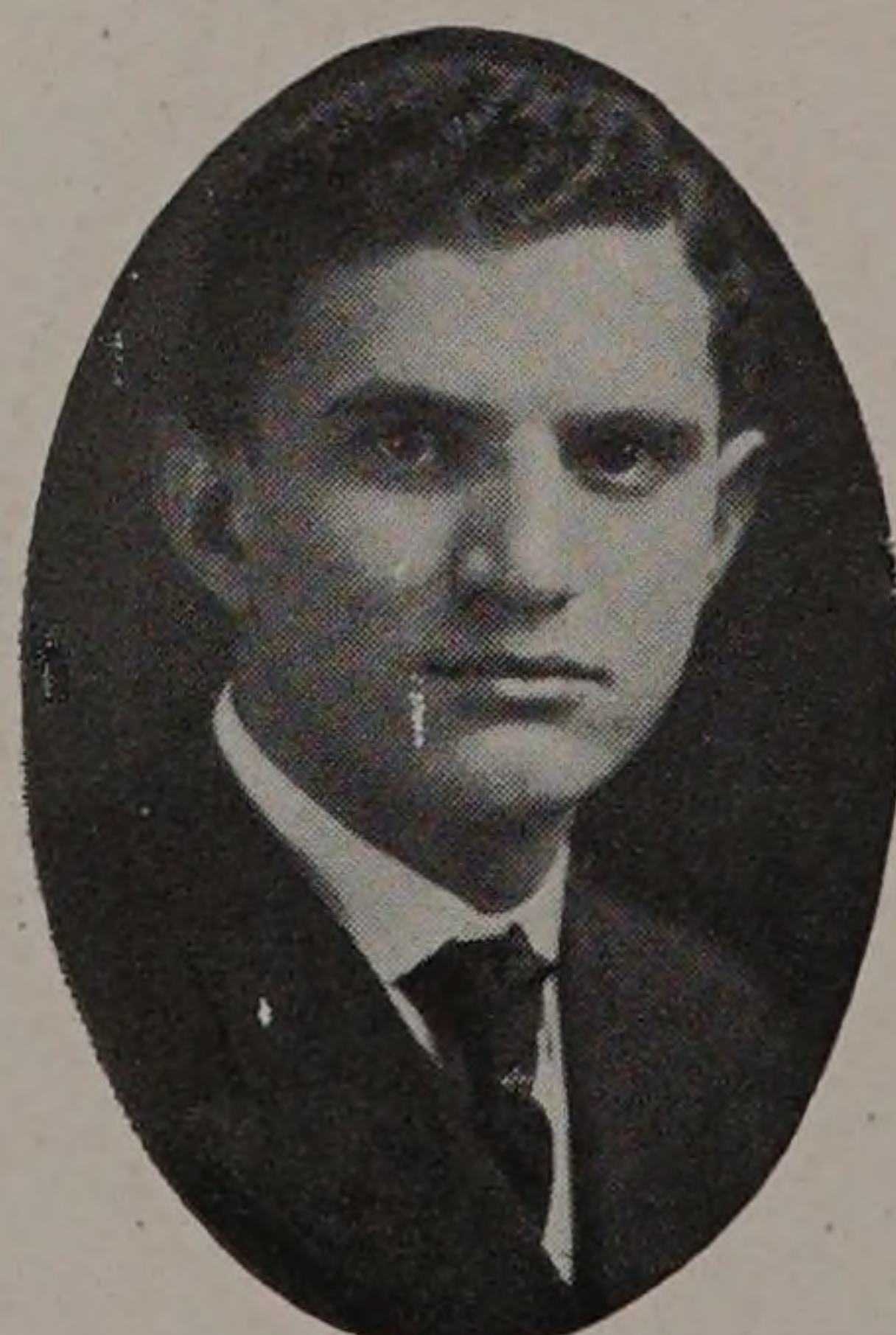
Birthplace, Moscow, Russia. Ph. D., Johns Hopkins University; Phi Beta Kappa. Author of Memoirs on Differential Geometry in American Journal of Mathematics and in Transactions of American Mathematical Society. Residence, 3345 South Park Avenue.



WALTER KAY SMART.

*Assistant Professor of English.*

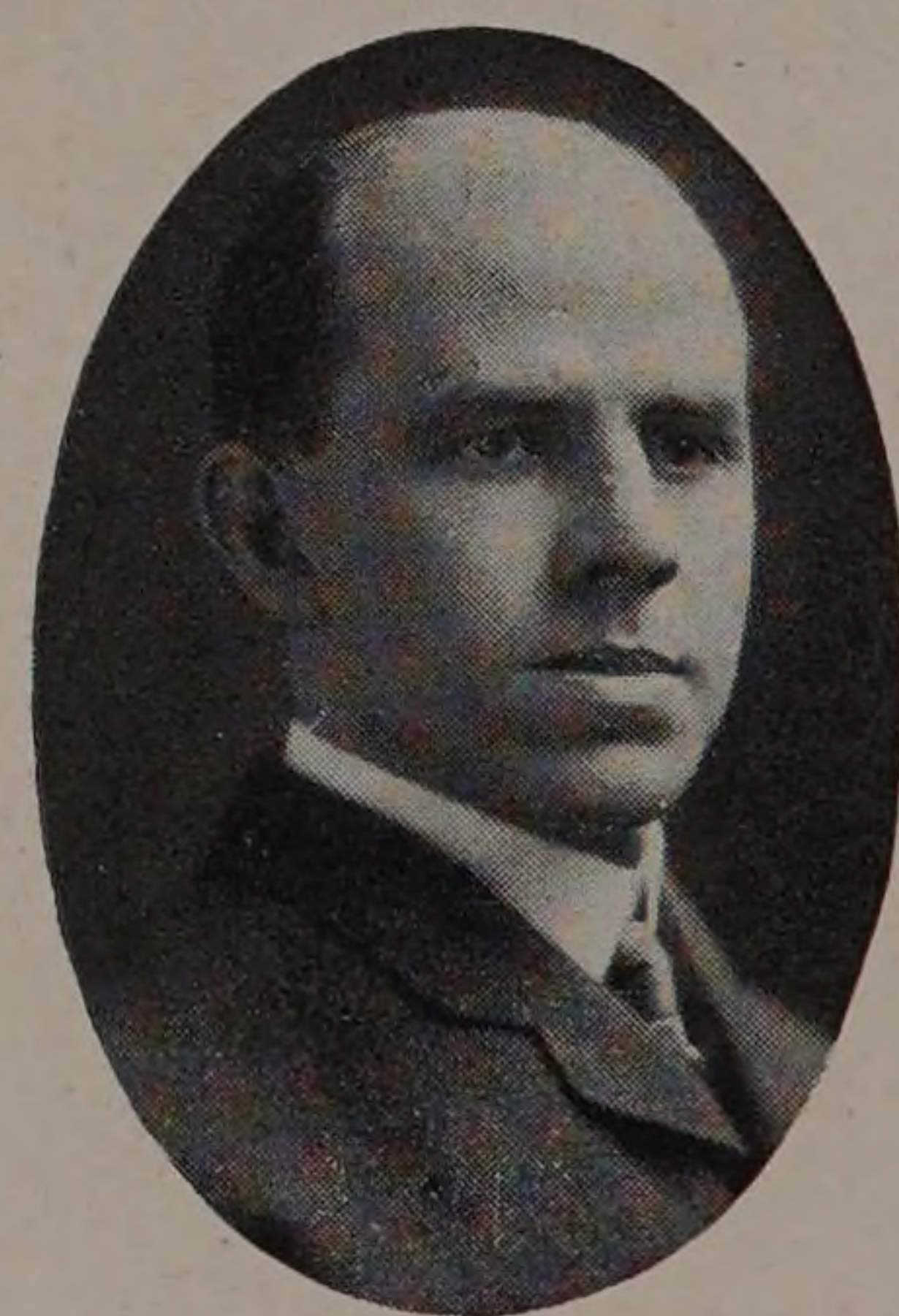
Birthplace, Payson, Illinois. Shurtleff College and Northwestern University. Ph. B., University of Chicago, 1902. Residence, 1039 East 54th Street.



HARRY CLAY COFFEEN.

*Assistant Professor of Machine Design.*

Birthplace, Champaign, Illinois. B. S., University of Illinois, 1898; M. S., 1899. University of Pennsylvania. Phi Gamma Delta. Tau Beta Pi. Residence, 4009 Lake Avenue.



BENJAMIN BALL FREUD.

*Assistant Professor of Analytical and Organic Chemistry.*

Birthplace, Chicago, Illinois. B. S., University of Chicago, 1904. Graduate Student of University of Chicago. Phi Beta Kappa. Sigma Xi. Member of American Chemical Society. Author of "The Chemistry of Gas Mantles," "A Study of the Petroleum Industries," and a paper on Denatured Alcohol. Research work in Organic Chemistry. Physio-organic research on the "salt-effect" in catalysis. Residence, 1404 North Spaulding Avenue.