



ARTHUR J. FRITH.

*Associate Professor of Experimental Engineering.*

Birthplace, Philadelphia, Pennsylvania. Graduate of Rensselaer Polytechnic Institute, Troy, N. Y. Member of the American Society of Mechanical Engineers. Assistant Professor of Mechanical Engineering, Lehigh University.



ANSEL A. KNOWLTON.

*Associate Professor of Physics.*

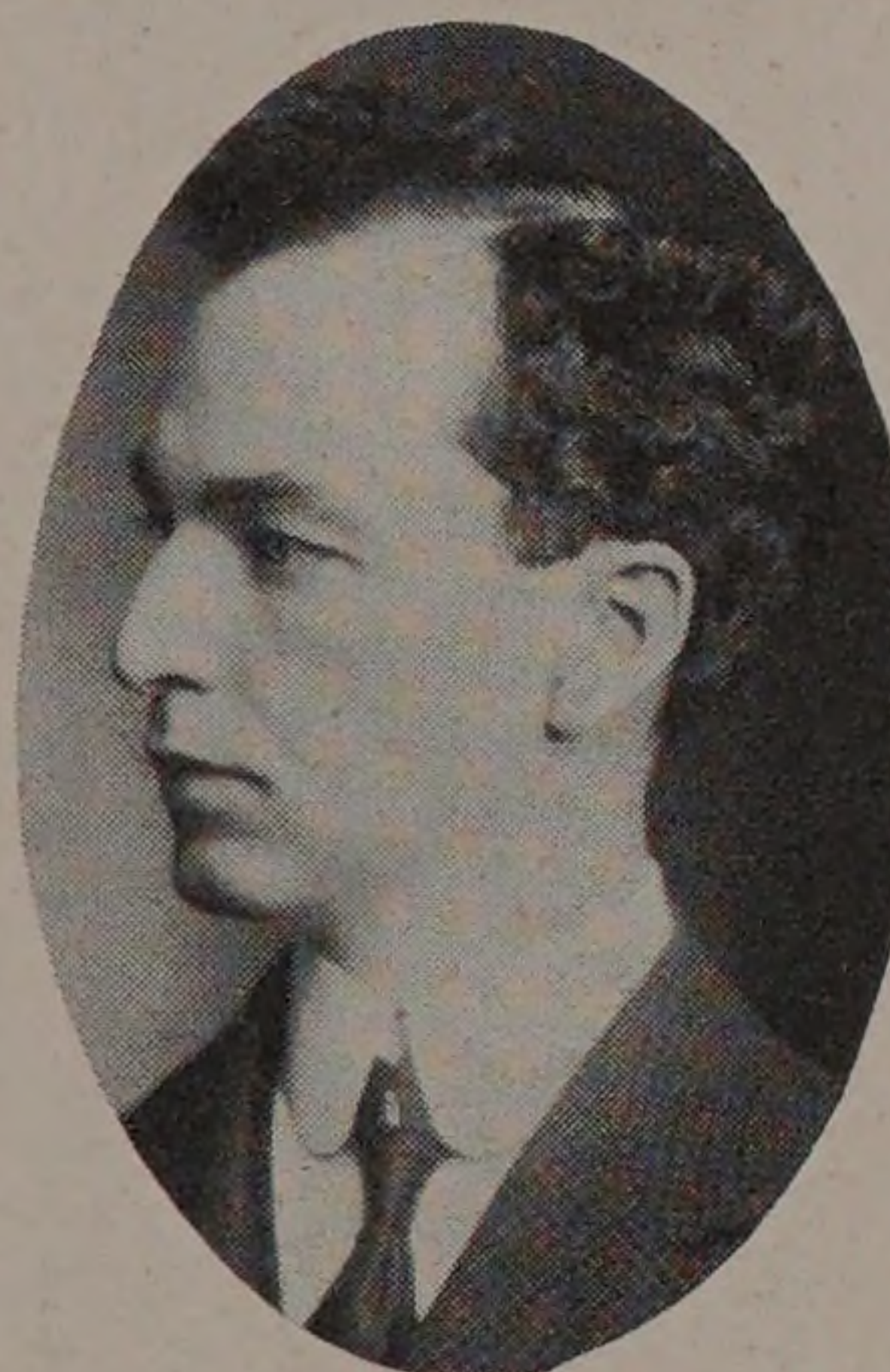
Birthplace, New Portland, Maine. A. B., Bates College, 1898. Graduate Student, Universities of Wisconsin and Chicago. A. M., Northwestern University, 1903. Research work on Arc Spectra of Magnesium. Residence, 6030 South Park Avenue.



ROBERT VALLETTE PERRY.

*Associate Professor of Machine Design.*

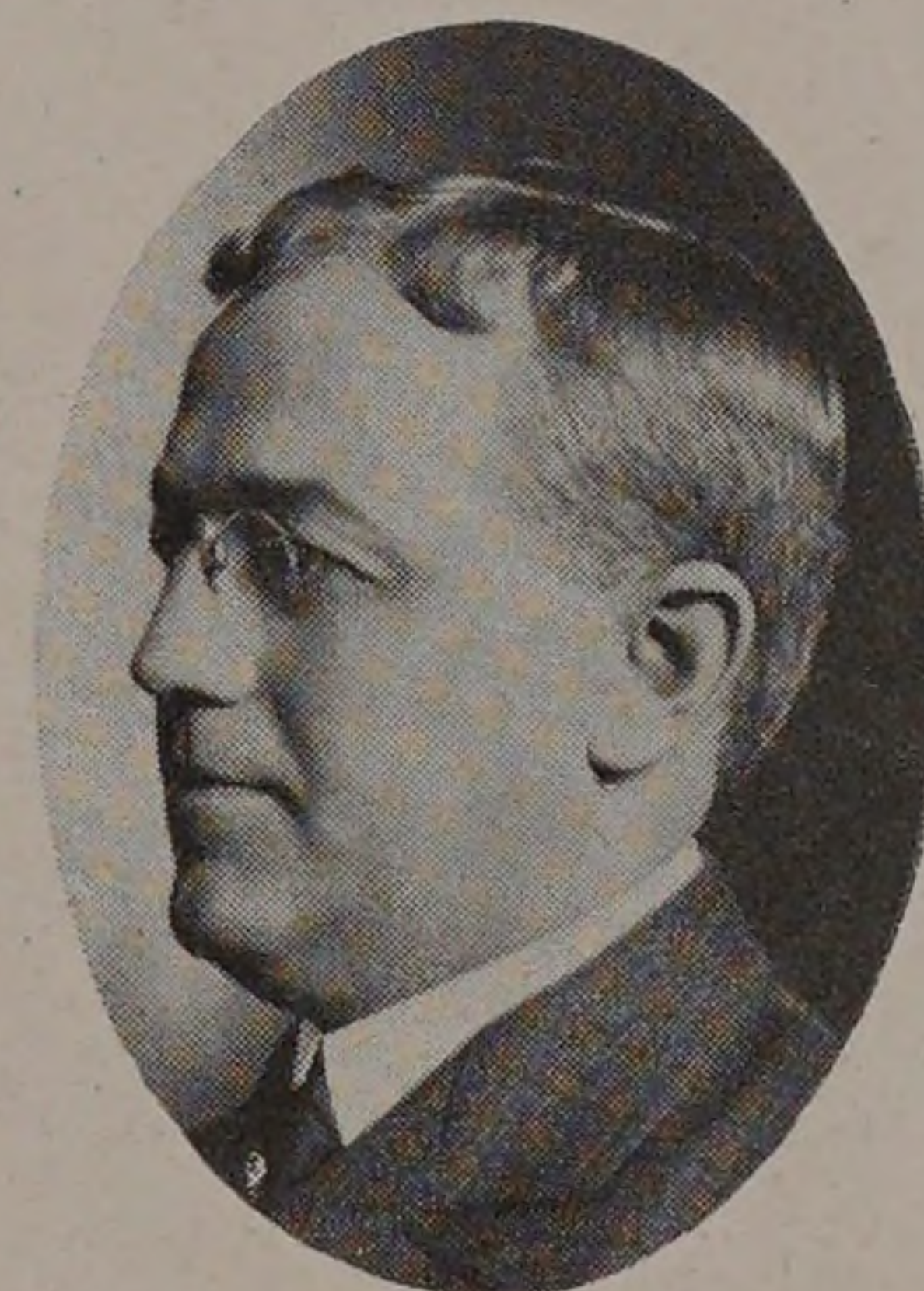
Birthplace, Hartford, Connecticut. B. S., Armour Institute of Technology, 1897; M. E., 1901. Tau Beta Pi. Residence, 536 West 66th Street.



CHARLES EDWARD PAUL.

*Associate Professor of Mechanics.*

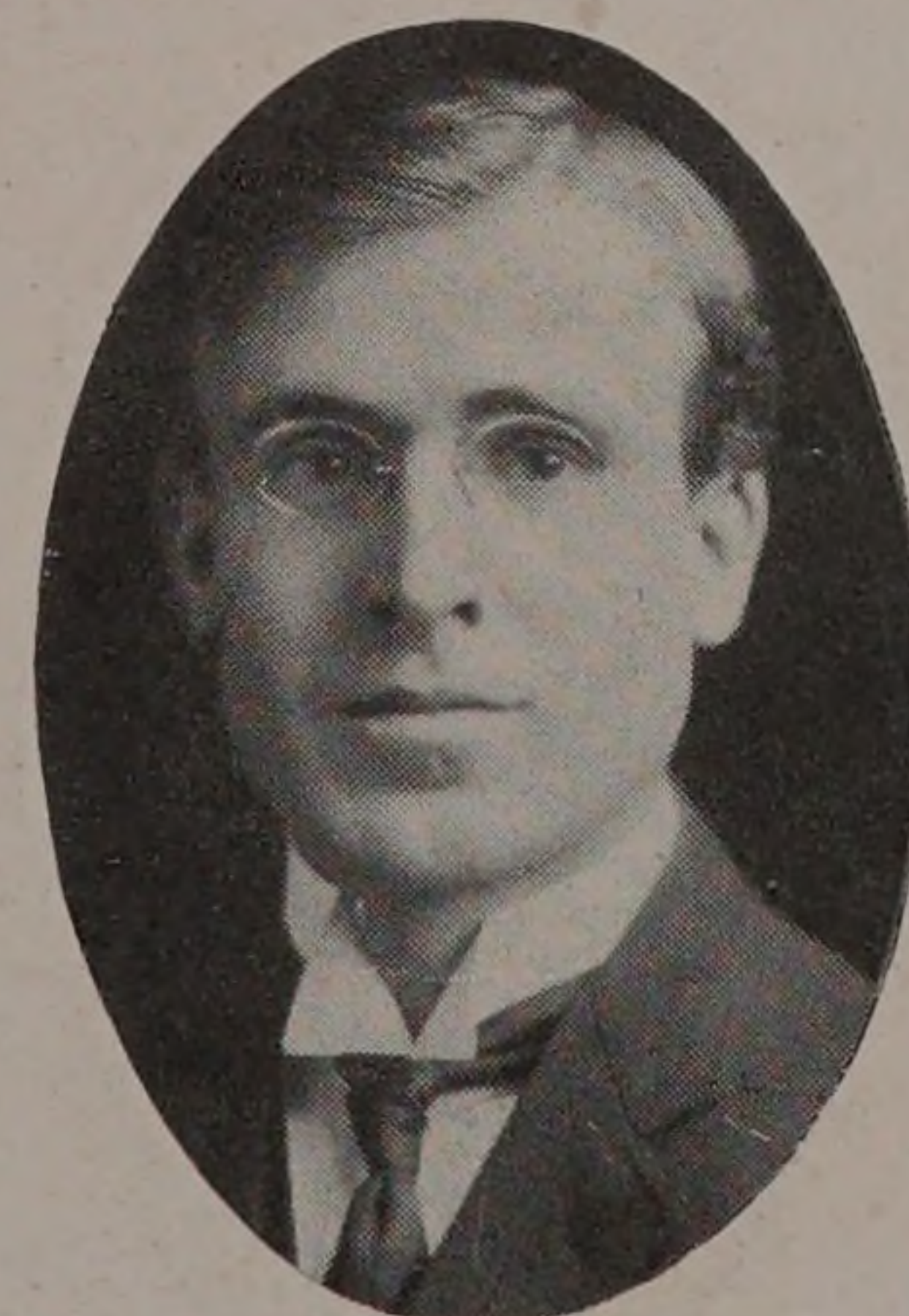
Birthplace, Belfast, Maine. B. S., Massachusetts Institute of Technology. Theta Xi, American Society of Mechanical Engineers, American Society for Testing Materials, and Society for the Promotion of Engineering Education. Original research on Chimney Drafts, and Strength of Materials. Residence, 6355 Ingle-side Avenue.



THOMAS EATON DOUBT.

*Associate Professor of Physics.*

Birthplace, Louisville, Kentucky. B. S., Nebraska Wesleyan University, 1892. M. A., University of Nebraska, 1896. Ph. D., University of Chicago, 1904. Fellow in Physics, University of Nebraska, 1894-7. Fellow in Physics, University of Chicago. Sigma Xi. Member of American Association for the Advancement of Science, American Institute of Electrical Engineers, and American Physical Society. Research work on Effect of Intensity upon Velocity of Light and on the Determination of the Absolute Color Equation of White Light. Residence, 6028 South Park Avenue.



CHARLES WILBER LEIGH.

*Associate Professor of Mathematics.*

Birthplace, Peoria, Illinois. B. S., University of Illinois, 1897. University of Chicago, Phi Gamma Delta. Author of text books on Solid Geometry and Trigonometry. Residence, 7320 Lafayette Avenue.