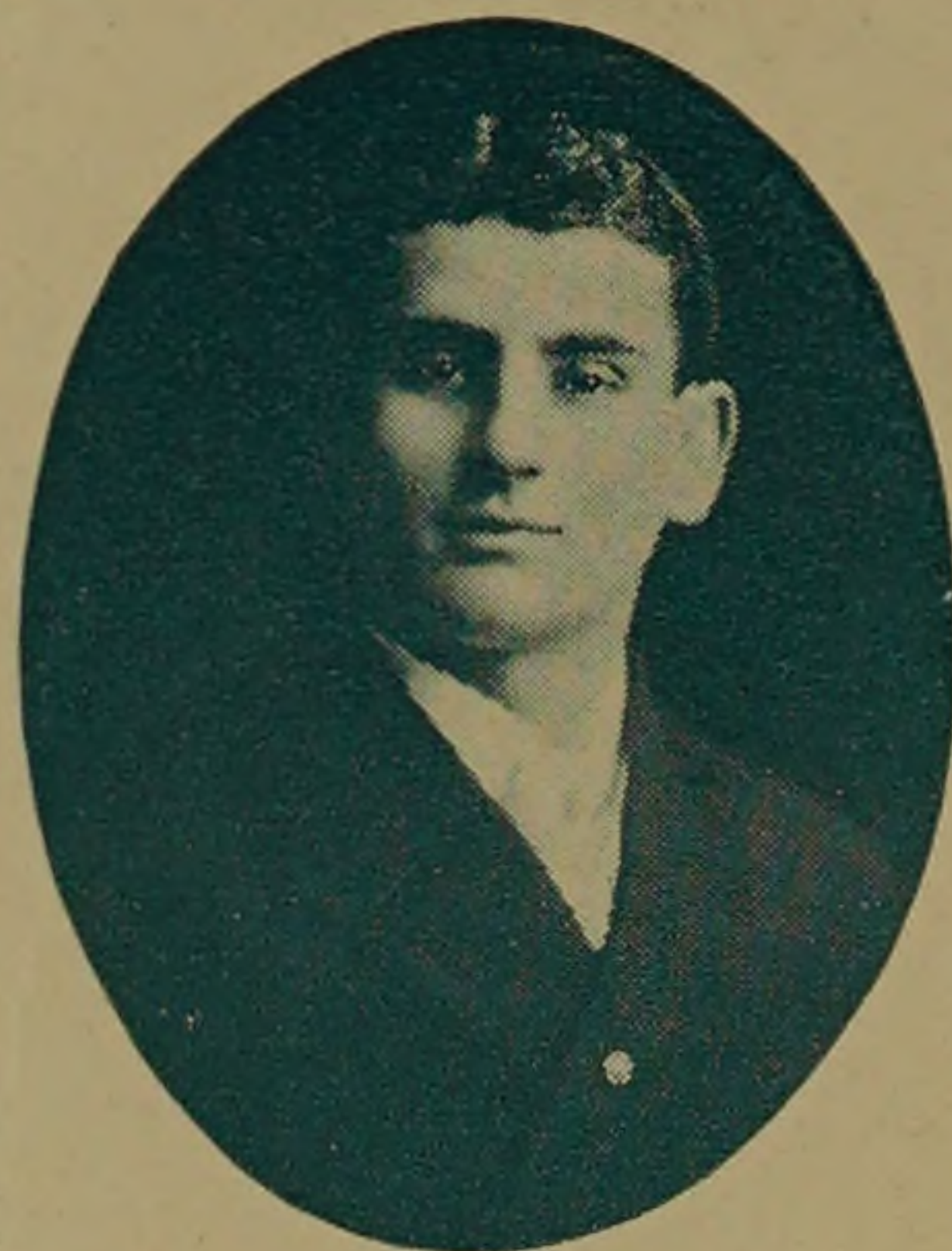


THE INTEGRAL 1907

The Seniors



SINGER, SIDNEY CHARLES.

Mechanical.

Born in Cleveland, Ohio, November 23, 1885.
Prepared at Omaha High School, 1903.
Member of Class Track Team, Manager (1905-06).
Member of Orchestra, Nebraska Club, and Senior Mechanical Society.

SMALLEY, J. SHEPARD.

Electrical.

Born in Muscatine, Iowa, April 13, 1885.
Prepared at Muscatine High School, 1903.
Member of Class Basketball Team (1903, '04, '05, and '06).
Member of Armour Branch, A. I. E. E., Executive Committee (1906).

SMITH, CLARENCE URLING.

Mechanical.

Phi Kappa Sigma.
Born in Philadelphia, Pennsylvania, June 20, 1885.
Prepared at Armour Scientific Academy, 1903.
Chairman of Class Social Committee (1905-06 and 1906-07).
Sub-Marshall of Junior Week (1906).
Manager of Class Football Team (1904-05); Class Bowling Team (1904-05); and College Baseball Team (1906-07).
Member of College Track Team (1906). Member of Glee Club (1905-06 and 1906-07). Member of Cast of "The Walking Delegate."
Member of Fulcrum Staff (1904-05).
Member of Senior Mechanical Society and Radical X Club.

SMITH, LORENZO B.

Chemical.

Delta Tau Delta.
Born in Aurora, Illinois, July 18, 1885.
Prepared at East Aurora High School.
Member of Orchestra and Glee and Mandolin Clubs (1904-05 and 1905-06).
Member of Chemical Society and Radical X Club.

STAGG, MILTON V.

Electrical.

Born in Chicago, Illinois, February 14, 1886.
Prepared at Lake High School, 1903.
Member Class Baseball Team (1904-05 and 1905-06).
Associate Editor of The Integral (1905-06).
Member of Armour Branch, A. I. E. E.

STEWART, ROY FRANKLIN.

Chemical.

Tau Beta Pi.
Born in Chicago, Illinois, August 16, 1880.
Prepared at Lyons High School, La Grange, Illinois, 1899; University of Chicago.
Catharine M. White Scholarship (1905-06).
Member of Chemical Society.

