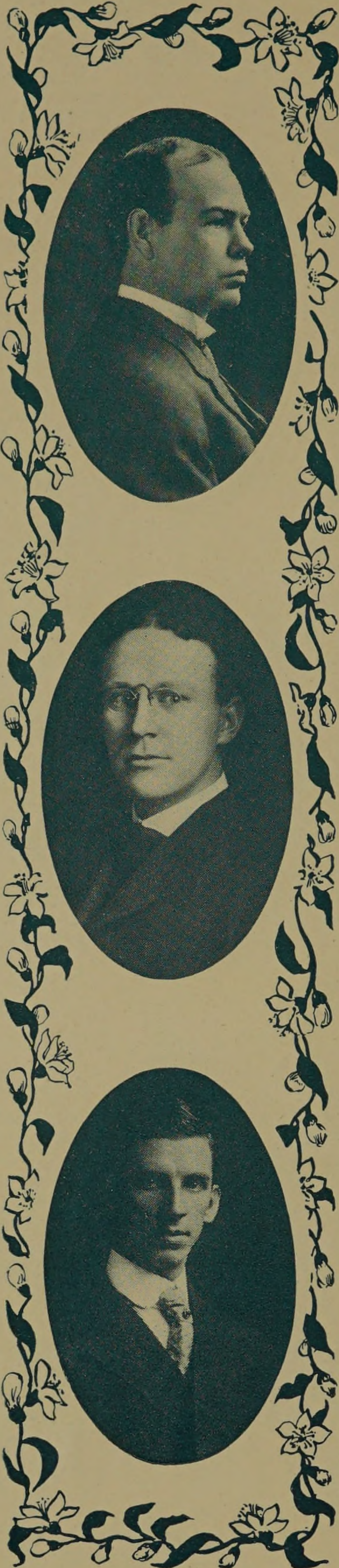


THE INTEGRAL 1907

The Faculty



HARRY MCCORMACK.

Associate Professor of Industrial Chemistry.

Birthplace, Spencer, Iowa. B. S., Drake University, Des Moines, Iowa, 1896. M. S., University of Illinois, 1899. Member of American Chemical Society. Author of Bulletin U. S. Department of Agriculture on Losses in Cooking Meat. Chemical Study of Water Supply of Des Moines, Iowa. Chemistry of Iowa Building Stone. Residence, 5736 Drexel Avenue.

CHARLES WILBER LEIGH.

Associate Professor of Mathematics.

Birthplace, Peoria, Illinois. B. S., University of Illinois, 1897. University of Chicago. Phi Gamma Delta. Author of text books on Solid Geometry and Trigonometry. Residence, 7320 Lafayette Avenue.

JOSEPH B. FINNEGAN.

Associate Professor of Fire Protection Engineering.

Birthplace, Stoneham, Massachusetts. S. B., Massachusetts Institute of Technology, 1904. Residence, 6106 Drexel Avenue.

HARRY CLAY COFFEEN.

Assistant Professor of Machine Design.

Birthplace, Champaign, Illinois. B. S., University of Illinois, 1898; M. S., 1899. University of Pennsylvania. Phi Gamma Delta. Tau Beta Pi. Residence, 3335 Calumet Avenue.

WALTER KAY SMART.

Assistant Professor of English.

Birthplace, Payson, Illinois. Shurtleff College and Northwestern University. Ph. B., University of Chicago, 1902. Residence, 1039 East 54th Street.

