



KLEIN, SAMUEL.

Civil.

Tau Beta Pi.
Born in Kasau, Austria, Hungary, March 3, 1884.
Prepared at Northwest Division High School, Chicago, and Armour
Scientific Academy.
Member '06 Civil Society.
Thesis: "Design of Two-hinged, Spandrel-braced Steel-Arch, Double-
Track Railroad Bridge."



KRUM, HOWARD LEWIS.

Electrical.

Tau Beta Pi.
Born in Minneapolis, Minn., November 15, 1883.
Prepared at Hyde Park High School, Chicago.
Member Executive Committee, A. I. E. E.
Thesis: "Investigation of Air-
cooling of Transformers and
Rotary Converters."



KUHN, GEORGE WILLIAM.

Electrical.

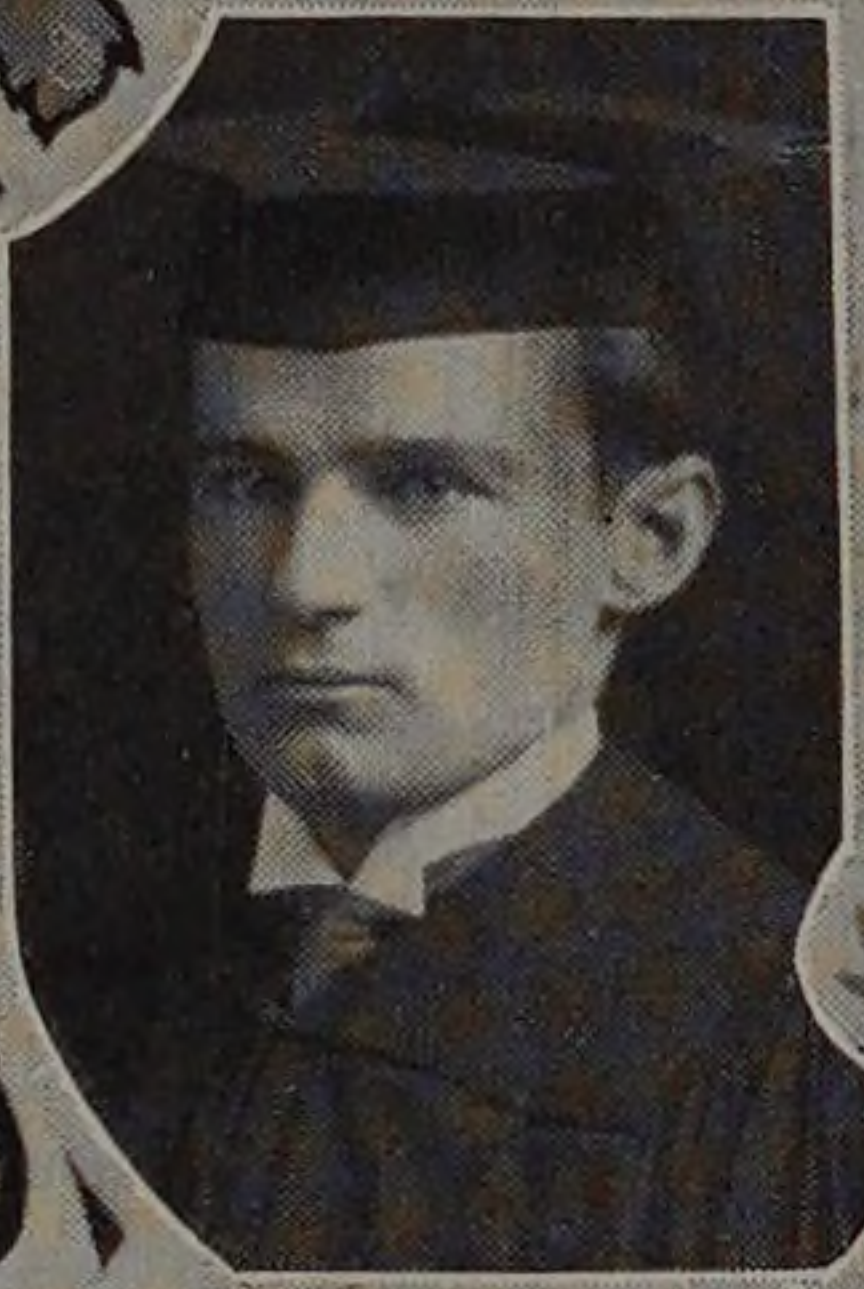
Tau Beta Pi.
Born in Chicago, Ill., May 10,
1883.
Prepared at Armour Scientific
Academy, '98.
Thesis: "The Oscillograph and
A Study of Unbalanced
Phase Loading of Transform-
ers."



LAYER, ROBERT.

Architecture.

Born in Chicago, Ill., March 3,
1883.
Prepared at Chicago Manual
Training School.
Thesis: "Group of Public
Buildings."



LEININGER, WALTER GEORGE.

Civil.

Born in Buffalo, N. Y., April
27, 1882.
Prepared at Buffalo High School and Armour
Scientific Academy.
Member '06 Civil Society, Class Basket Ball
Team, '03; College Basket Ball Team, '03,
'04, '05; Captain College Basket Ball
Team, '06; Class Base Ball Team, '03 and '04;
Member Class Football Team, '03, and Bowling
Team, '05; Chairman '06 Civil Society, '04.
Law Clerk. 1899-1901.
Thesis: "A Sewage Disposal Plant."



LIEBERMANN, ERNST.

Civil.

Tau Beta Pi.
Born in Sheboygan, Wis., October 27, 1879.
Prepared at Sheboygan High School.
Member '06 Civil Society, Manager Class Basket Ball Team,
'05; Member College Basket Ball Team, '03, '04, '05, '06;
Class Basket Ball Team, '03; Class Base Ball Team, '05.
Thesis: "A Sewage Disposal Plant."

