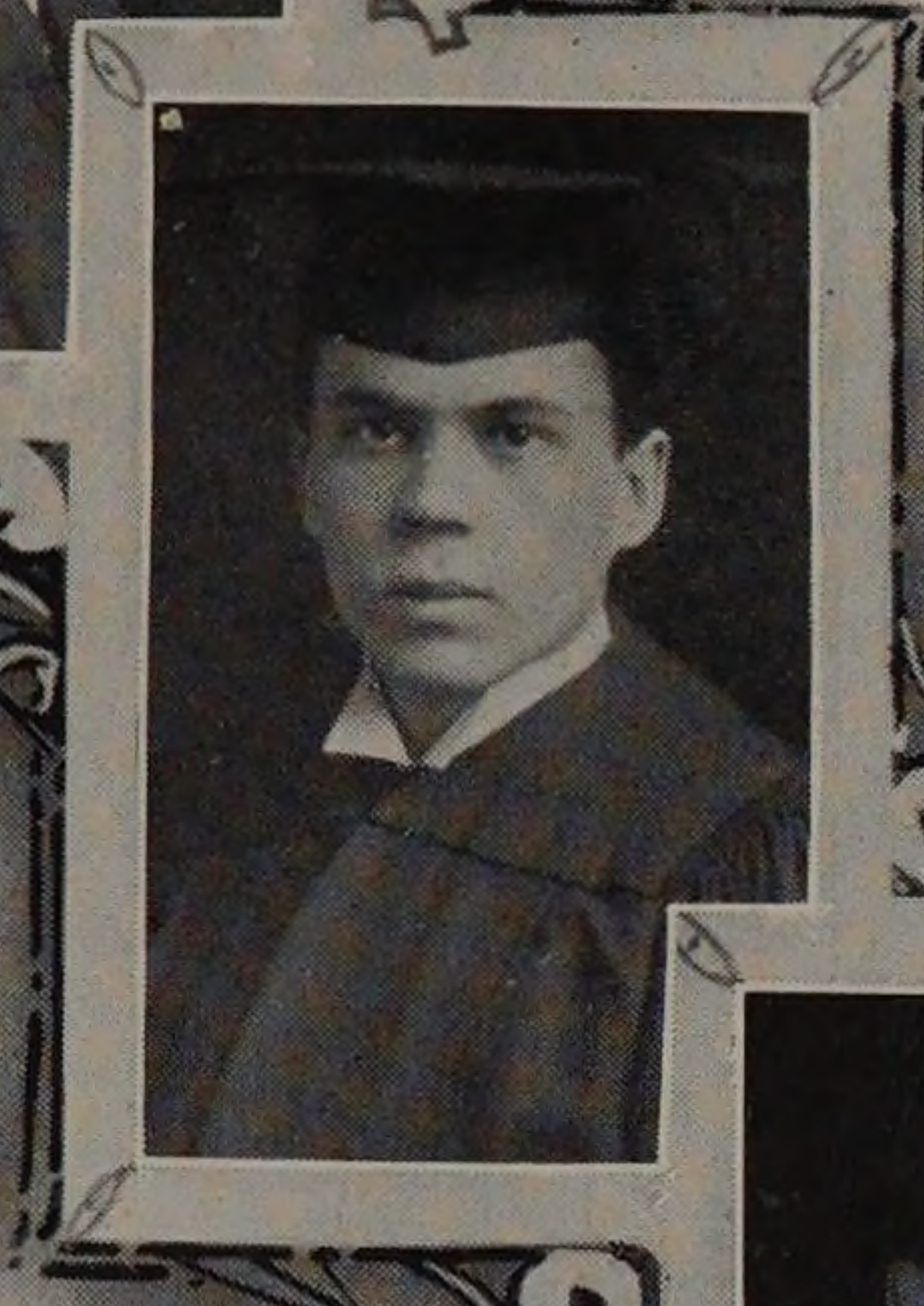


CAMPBELL, CHARLES LESLIE.
Civil.

Delta Tau Delta.
Born in Sparta, Ill., July 18, 1881.
Prepared at Sparta High School, '98. South Illinois
State Normal University, 1899-1900.
Ex-member Class of '04.
Thesis: "Economic Grade Reduction."



CARR, ALVA LEE.

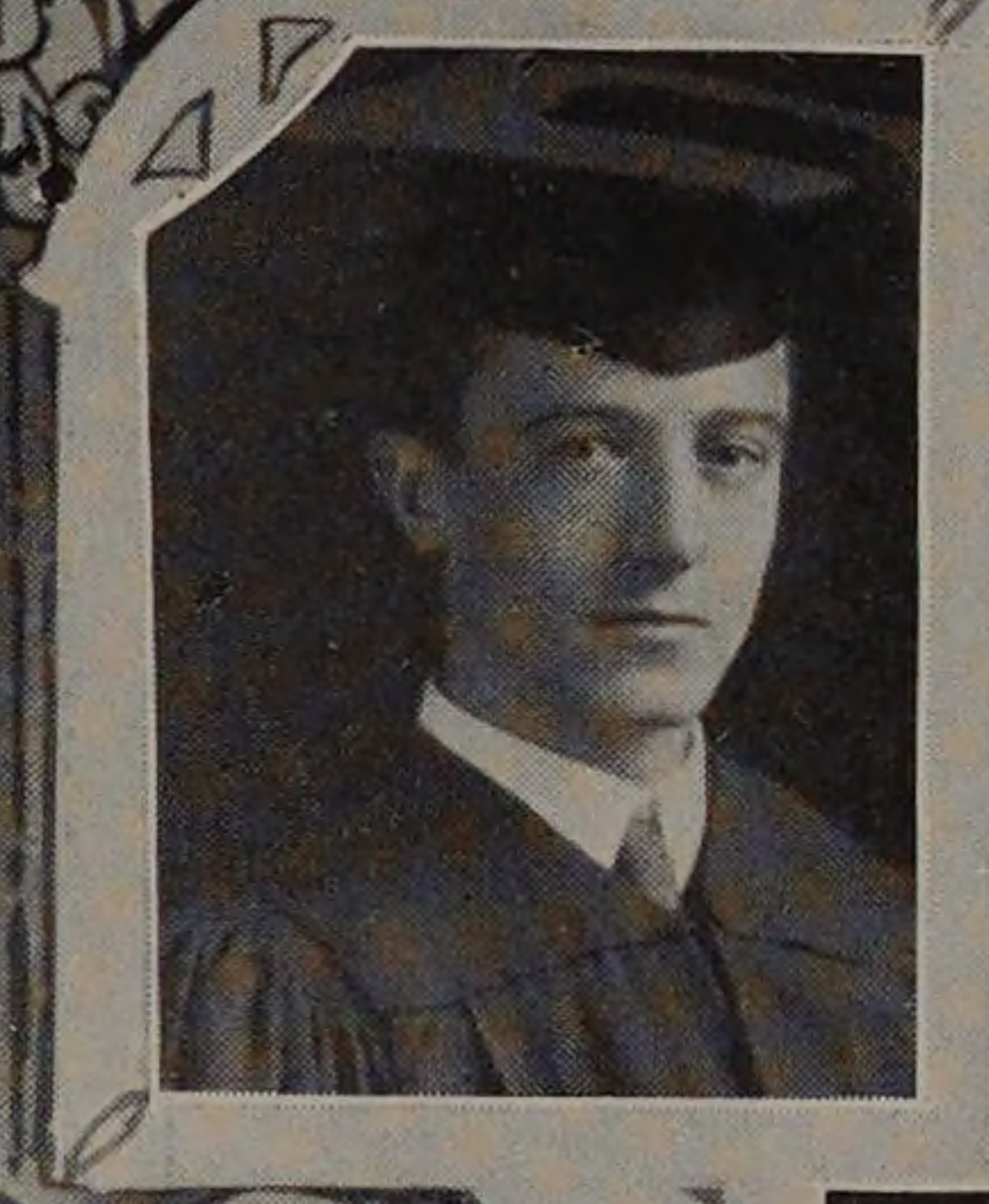
Mechanical.

Born in Milford, Ill., October
28, 1883.
Prepared at Hyde Park High
School, Chicago, '02.
Member of Senior Mechanical
Society, 1905-06. Captain
College Baseball Team, '06.
Thesis: "Comparative Test of
Steam Separators."



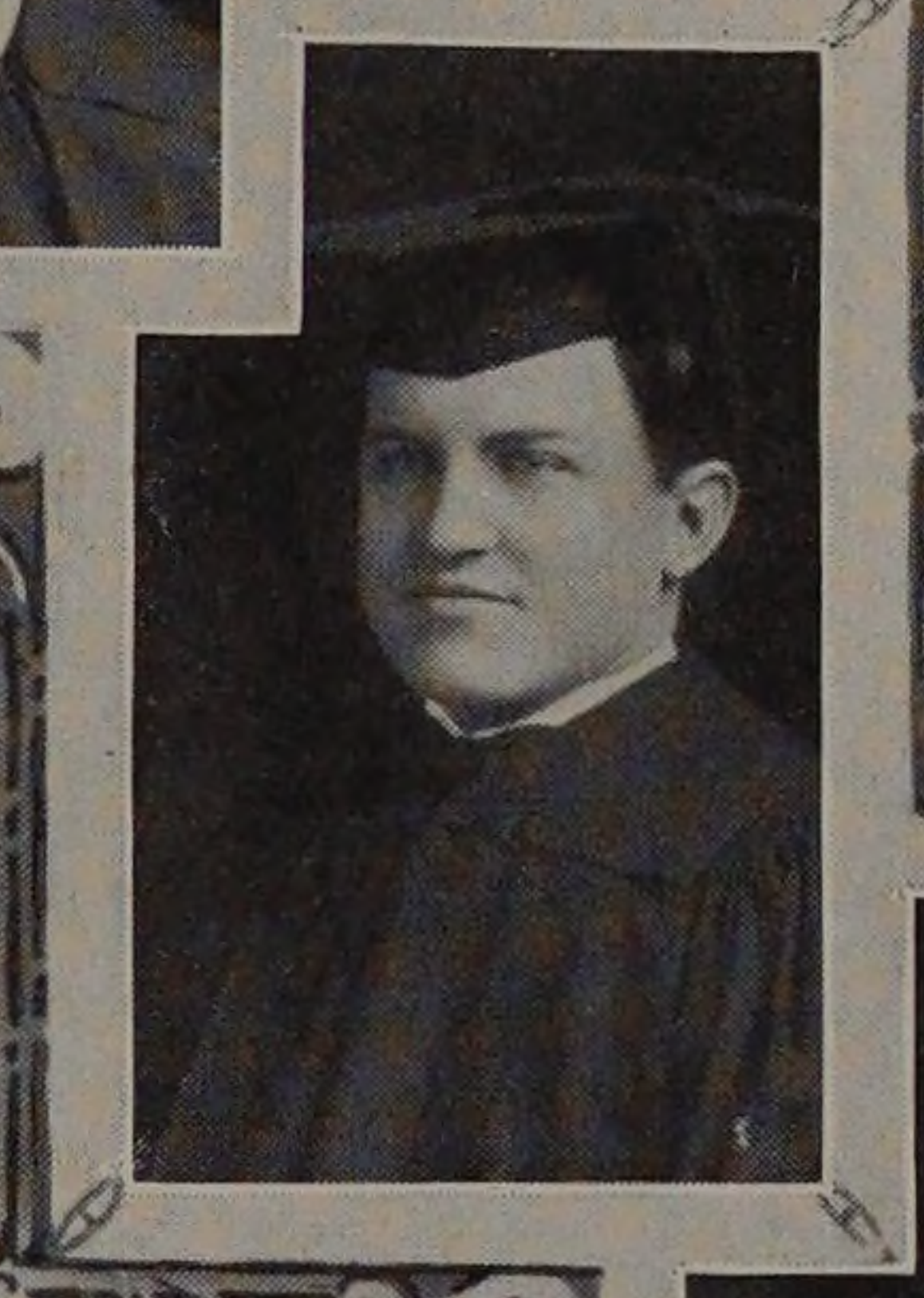
CLUCAS, GEORGE WORDEN.
Mechanical.

Born in Mansfield, Ohio, Febru-
ary 4, 1884.
Prepared at Centennial High
School, Pueblo, Colo., '02.
Member Senior Mechanical
Society, 1905-06.
Thesis: "The Physical Proper-
ties of Various Kinds of Wire."



COLLINS, WILLIAM RANDALL.
Chemical.

Born in Newport, Kentucky,
August 28, 1884.
Prepared at Hyde Park High
School, Chicago, '02.
Member of Chemical Engineer-
ing Society. Member of class
Baseball Team, '05.
Thesis: "Changes in Nitrogen
Constituents of Water."



COOK, NORMAN WOLCOTT.
Architecture.

Phi Kappa Sigma.
Born in Ottawa, Ill., December 8, 1882.
Prepared at Ottawa High School, '02.
Thesis: "A Fraternity House."



CUTLER, E. WARNER.

Electrical.

Born in Chicago, Ill., March 20, 1883.
Prepared at Englewood High School, Chicago.
Member A. I. E. E.
Thesis: "A Comparative Study of Watt-hour Meters."