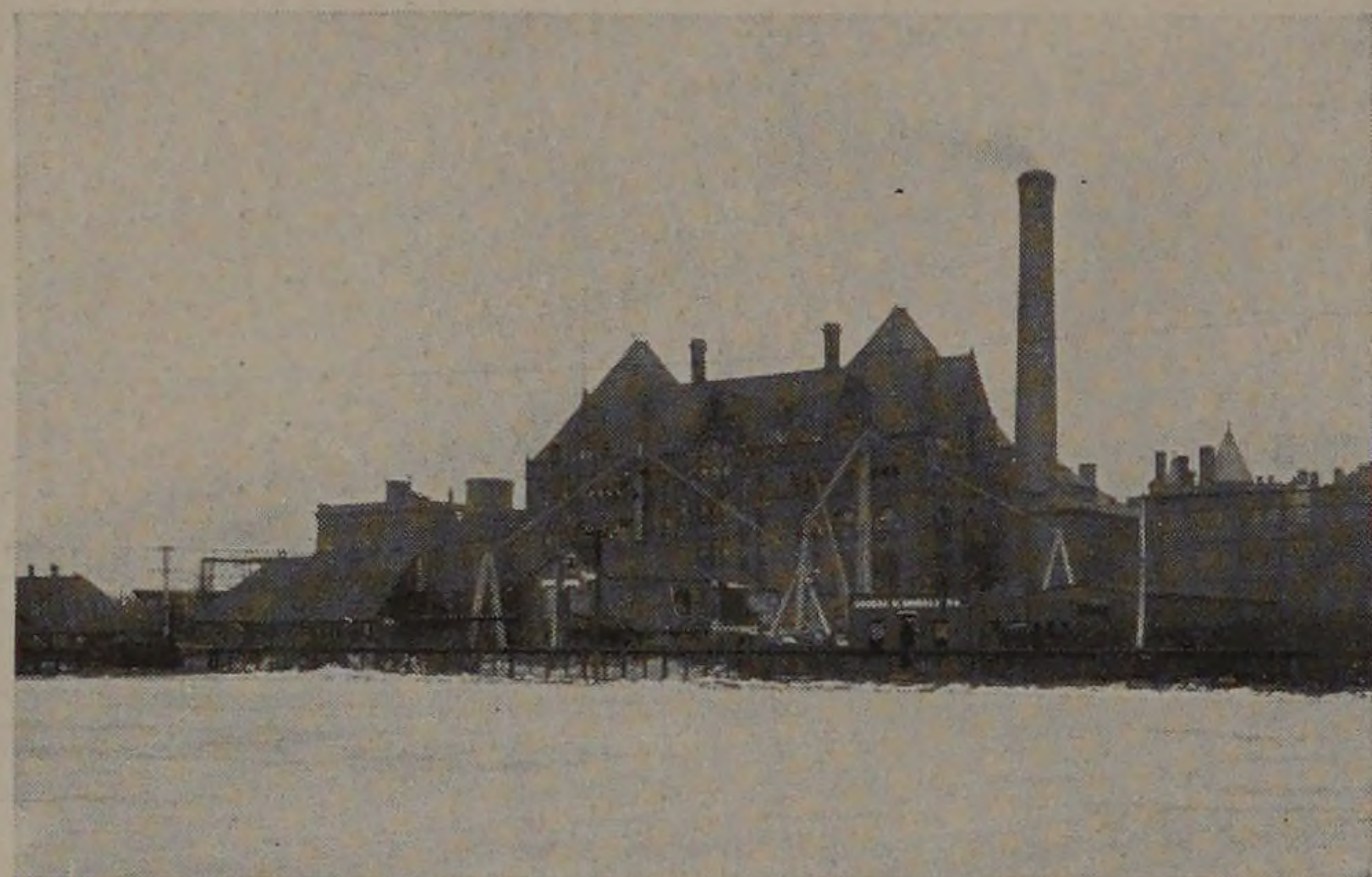

THE INTEGRAL

time no opportunities had been offered for young women to study these subjects in a regularly organized institution of learning. The success of this work was pronounced from the beginning, and it was not long before other institutions started departments along similar lines. Finally, when the value of such instruction had been fully proven, it was deemed wise for this department to continue as a distinct school in the center of the business quarter of the city.

This characteristic of the Institute in its early years—a willingness to experiment with new educational ideas and to show their real value—was supplemented by a distinct tendency towards engineering work for men and boys only.



WINTER VIEW FROM WEBSTER FIELD

Thus, after many vicissitudes, after being an experimental station for new lines of technical instruction, after starting fresh lines of work for others to continue, after dropping lines of work which it formerly fostered, the Institute, after eight years of life, finally found its true mission—and that for which it stands today—a distinct engineering school for men.

THE PAST YEAR

The preceding article gives in a general way the main events affecting the Institute, which have been crowded into the fifteen years since its founding. These events have each contributed their share toward the shaping of "A. I. T.'s" career and destiny. Especially has the past year played an important part in this onward march. The attendance has increased and the territory represented has enlarged. Various changes—all of them progressive—have been made in the different departments of the school. On March 1st, 1906, the Institute withdrew from the relations which had for three years existed between it and the American School of Correspondence. This change was greeted most heartily by both Alumni and Under-graduates. A more detailed account of the changes which the past year has brought about, will be given in the following pages.

MECHANICAL DEPARTMENT

In this department during the past year one instructor has been added in the Foundry and one in the Forge Shop; one mechanic in the Laboratories and one pattern maker in the Pattern Shop. Mr. Peterson has taken Mr. Ritchey's place, and Messrs. Libby and Anderson have taken the posi-