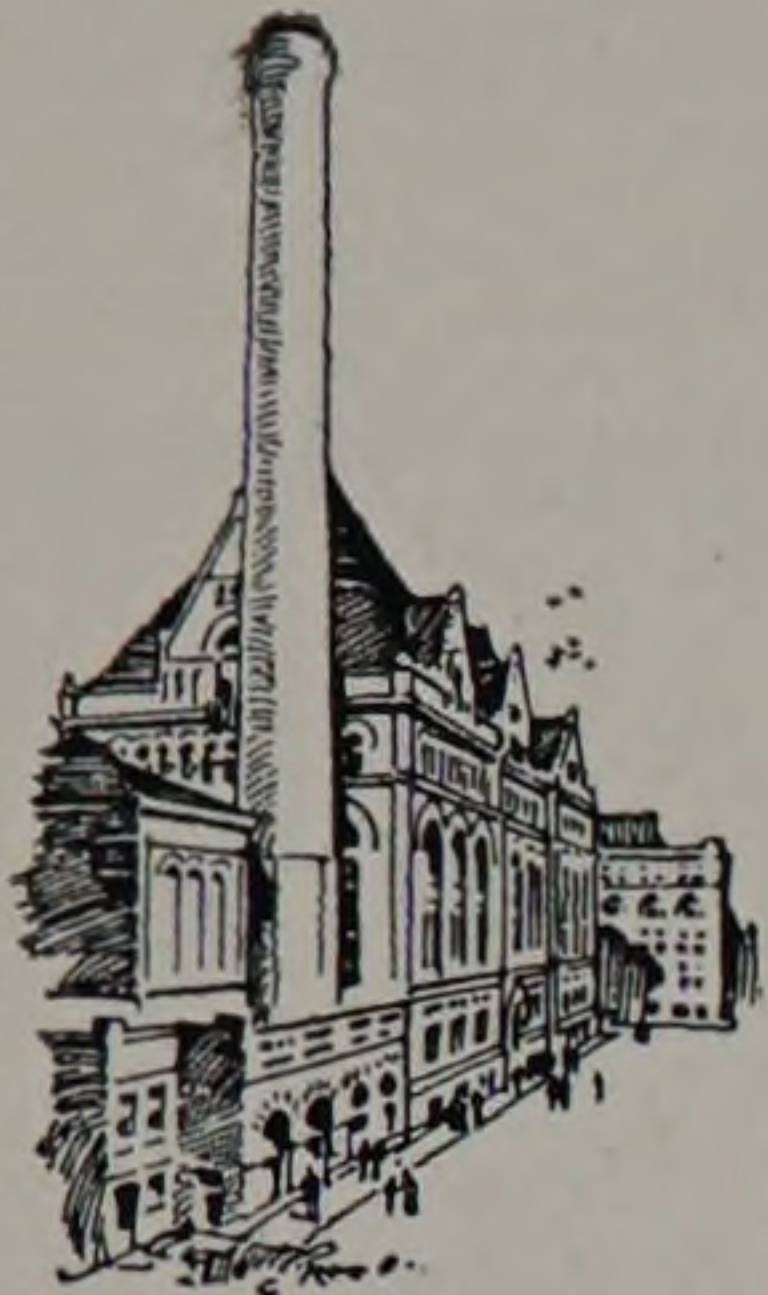


# TECHNICAL INSTRUCTION

## BY CORRESPONDENCE



THE AMERICAN SCHOOL OF CORRESPONDENCE offers instruction by mail under the direction of teachers of acknowledged standing. The following courses are offered in

### *Engineering*

Mechanical	Marine	Civil	Mechanical Drawing	Telegraphy
Electrical	Locomotive	Structural	Perspective Drawing	Telephony
Stationary	Sanitary	Architecture	Textiles	Navigation

**College Preparatory Course:** This course practically covers the work of the Scientific Academy of Armour Institute of Technology, and is accepted as fulfilling the requirements for entrance to the College of Engineering of that institution.

The courses are in no way intended to replace resident school courses, but to offer ambitious young men who have not the means or time to attend a resident school an opportunity for self-improvement under the guidance of thoroughly competent instructors. The instruction papers have been prepared especially for home study by well-known educators and experts. Among these are:

PROF. F. B. CROCKER, Columbian University	PROF. A. E. PHILLIPS, Armour Institute of Technology
PROF. F. E. TURNEAURE, University of Wisconsin	PROF. A. MARSTON, Iowa State College
PROF. WM. ESTY, Lehigh University	PROF. W. L. WEBB, formerly University of Pennsylvania
PROF. W. H. LAWRENCE, Mass. Institute of Technology	PROF. C. L. GRIFFIN, formerly Pennsylvania State College
D. A. GREGG, Boston	

For full information and catalogue address

## AMERICAN SCHOOL OF CORRESPONDENCE

at *ARMOUR INSTITUTE OF TECHNOLOGY, CHICAGO*

Mention The Integral.

## IF YOU ARE A TECHNICAL MAN

You should be a subscriber for at least one of these papers

**The Engineering Record—Weekly** . . . . . \$3.00 a year

The leading paper for civil, industrial, mechanical and structural engineers and contractors.

**Electrical World and Engineer—Weekly** . . . . . \$3.00 a year

The authoritative electrical engineering paper of the world.

**Street Railway Journal—Weekly** . . . . . \$3.00 a year

The acknowledged authority on the construction, operation and management of traction systems.

**American Electrician—Monthly** . . . . . \$1.00 a year

A monthly journal of practical electrical and steam engineering. It has the largest circulation of any electrical paper in the world.

**Electrochemical and Metallurgical Industry—Monthly** \$2.00 a year

The only publication in the English language devoted exclusively to this field.

Sample copies will be sent upon request, stating profession and position.

## McGraw Publishing Co.

The Engineering Building

NEW YORK CITY