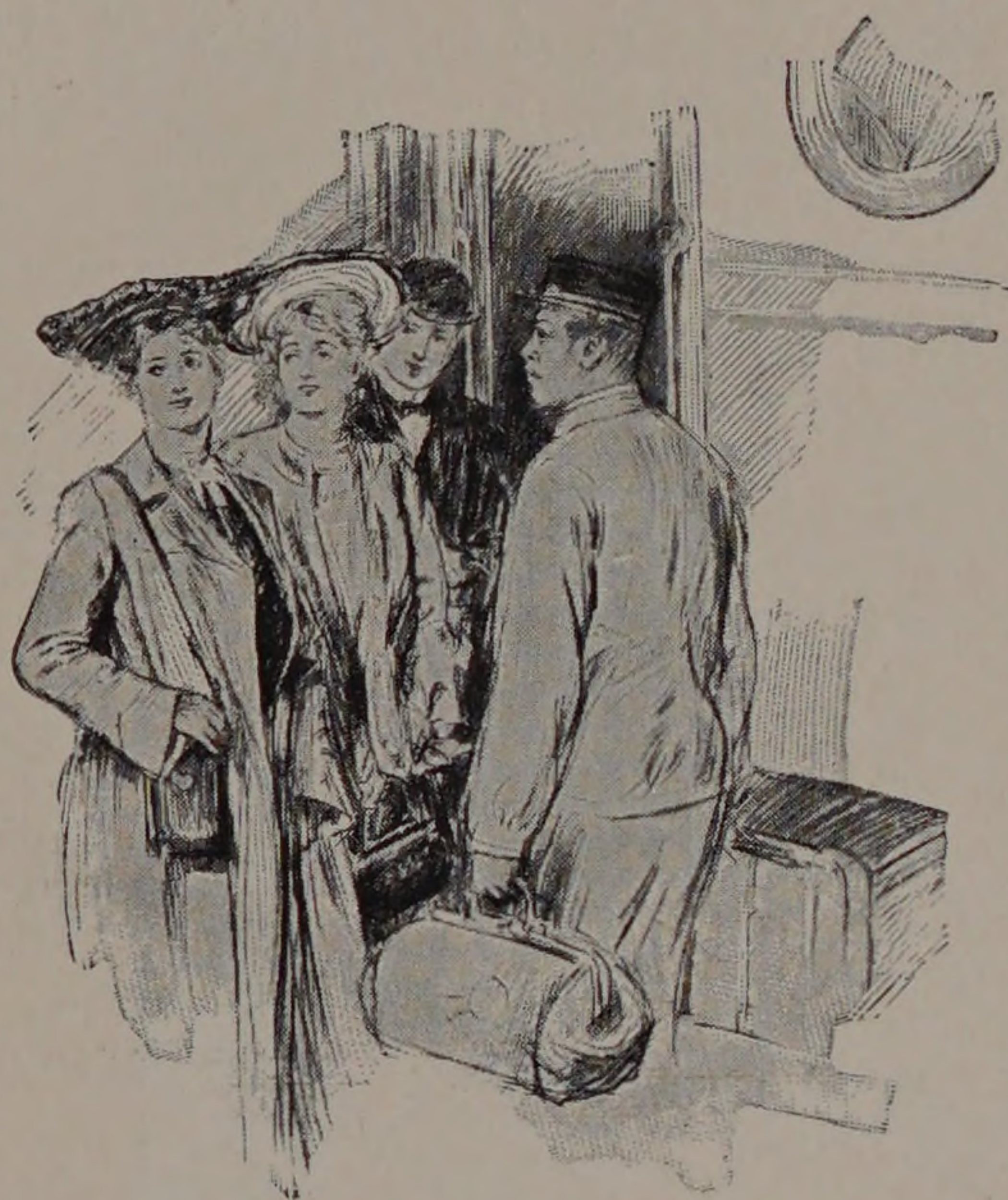


California



Congenial persons—educated, refined and well dressed—are the class you meet on

The California Limited

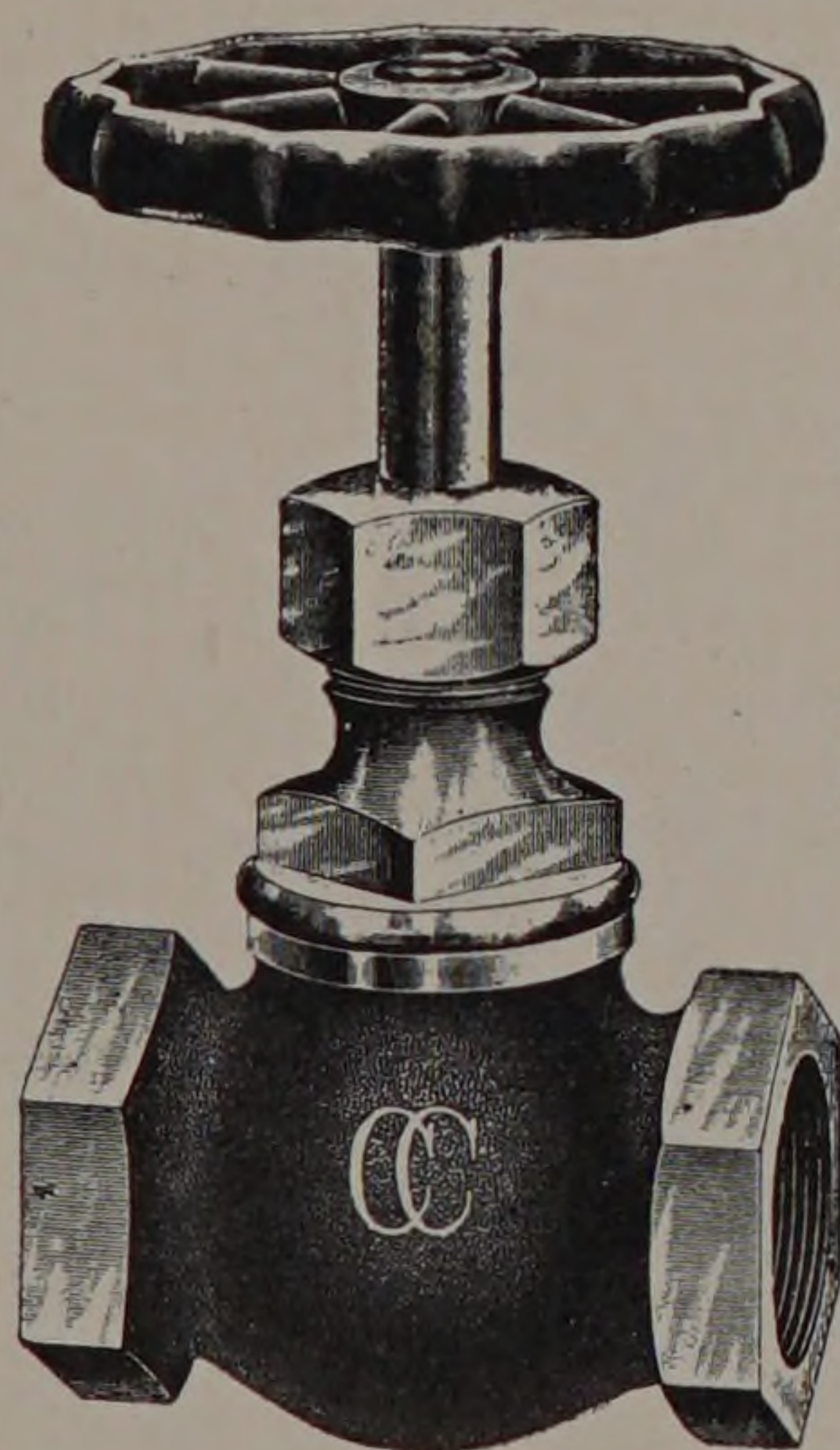
Hence the journey is sure to be pleasant socially....A point worth considering

The California Limited runs daily, between Chicago, Los Angeles, San Diego and San Francisco, on a practically dustless (oil-sprinkled) track. Visit Grand Canyon of Arizona en route.

Our illustrated booklets, mailed free, will help you rightly plan a California tour. Address General Passenger Office, Atchison, Topeka & Santa Fe Railway, Chicago.

Santa Fe All the Way

CRANE VALVES



Crane's Standard Valves are good for steam pressure up to 100 pounds.

They are of good weight, well proportioned, and are noted for their **UNIFORM EXCELLENCE**.

Made in brass and iron, in globe, angle, check, cross, gate, etc., patterns in sizes which should meet all requirements.

Close comparison will easily induce you to

SPECIFY CRANE VALVES

Write for Complete Pocket Catalogue.

CRANE CO.
CHICAGO

ESTABLISHED 1855

NEW YORK
PHILADELPHIA
CINCINNATI
KANSAS CITY
SIOUX CITY
ST. PAUL
DULUTH
OMAHA

SEATTLE
ST. LOUIS
MINNEAPOLIS
LOS ANGELES
SAN FRANCISCO
SALT LAKE CITY
WATERTOWN, S. D.
PORTLAND, ORE.