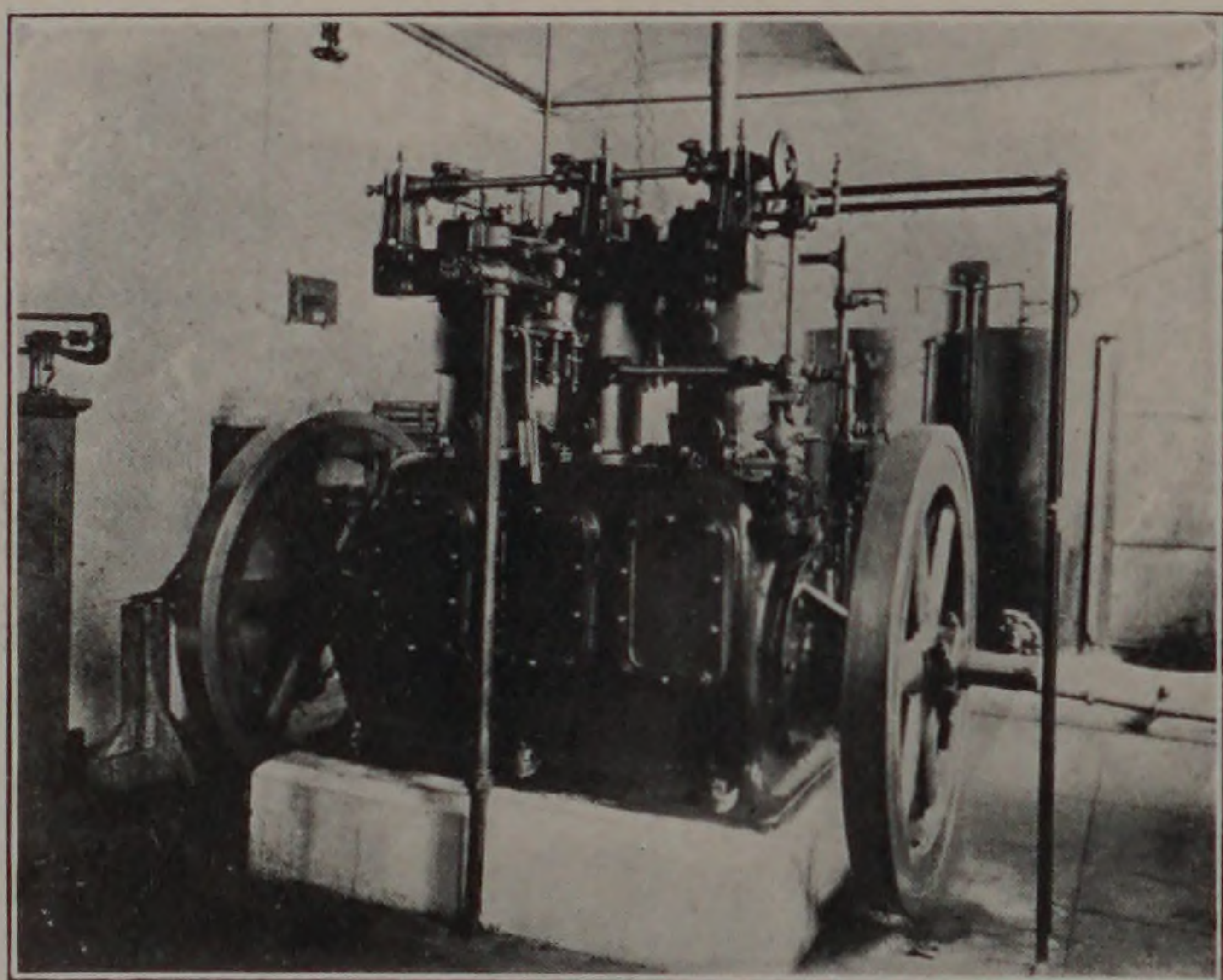


upon this step and upon the prospect which opens before it for the training of men in this new and important branch of modern engineering. The lunch room on the first floor will be removed to another building and this space occupied by the Dynamo Laboratory. This will give us a most perfect and, at the same time, one of the most practical of laboratories.

The increase in the number of students in the Civil Engineering Department has made it necessary to provide larger and more commodious quarters, and for the coming year the large room on the second floor of the Mission Building will be fitted up as a draughting room for this department.

The most important advance in the Chemical Engineering Department is in the study of Industrial Chemistry. Special effort has been made to enrich the instruction in this subject and to increase its effectiveness. Mr. G. M. Chamberlin, of the Bay City Beet Sugar Company, was engaged to give a three months' course in sugar making and sugar chemistry. The results are highly satisfactory, and the



course will be repeated each year. Notwithstanding the expansion of laboratory facilities during the past year, involving adequate provision for the Freshman class of 235 students, there is an imperative need of additional space if the department is to maintain its efficiency, and therefore, next year a new laboratory will be fitted up in what is now the Civil Engineering draughting room. This will amply provide for the increase in the classes in Chemistry for the coming year.

It is believed that the course in Fire Protection Engineering, established in September, 1903, will cause a more thorough and intelligent treat-