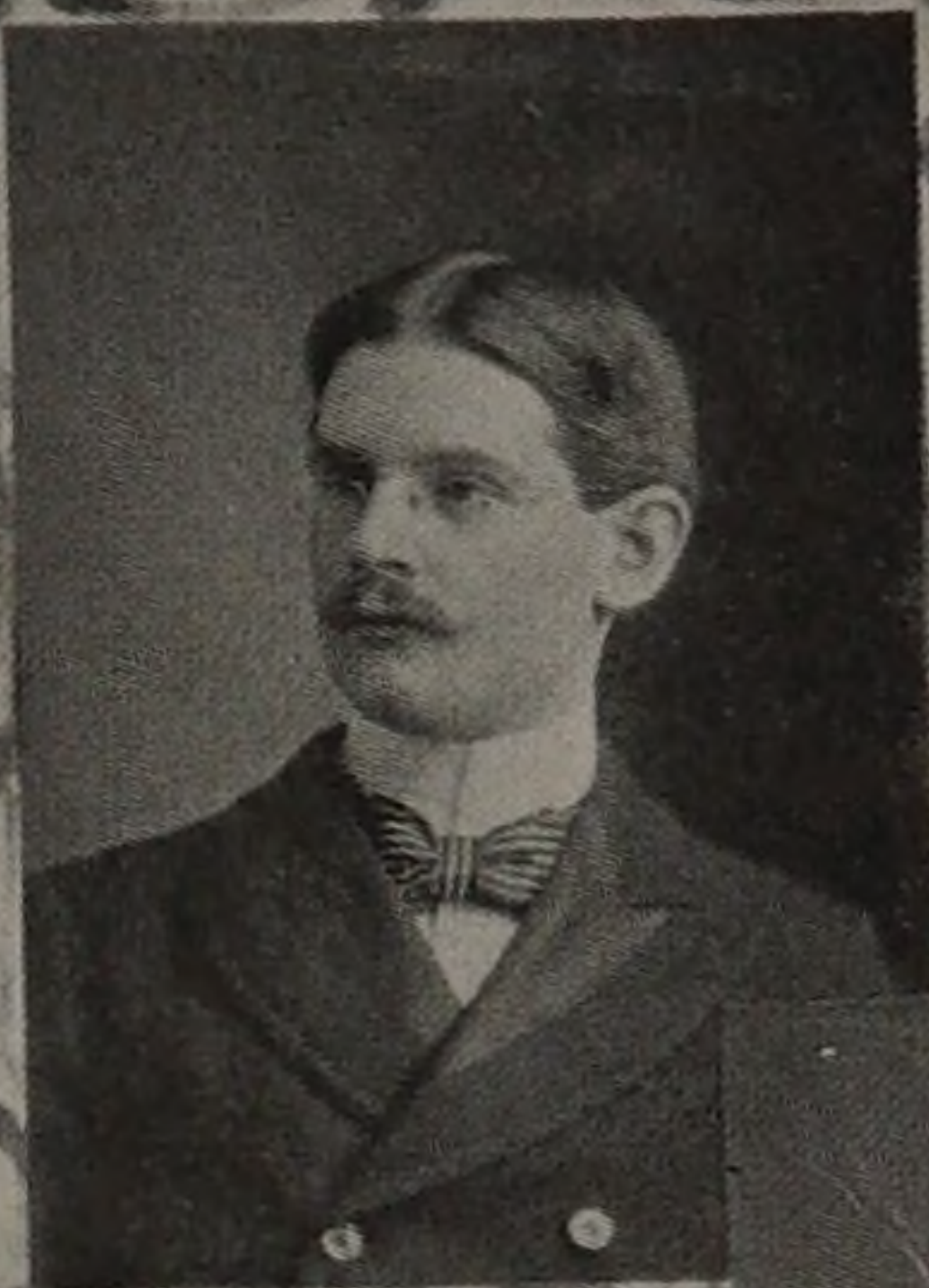


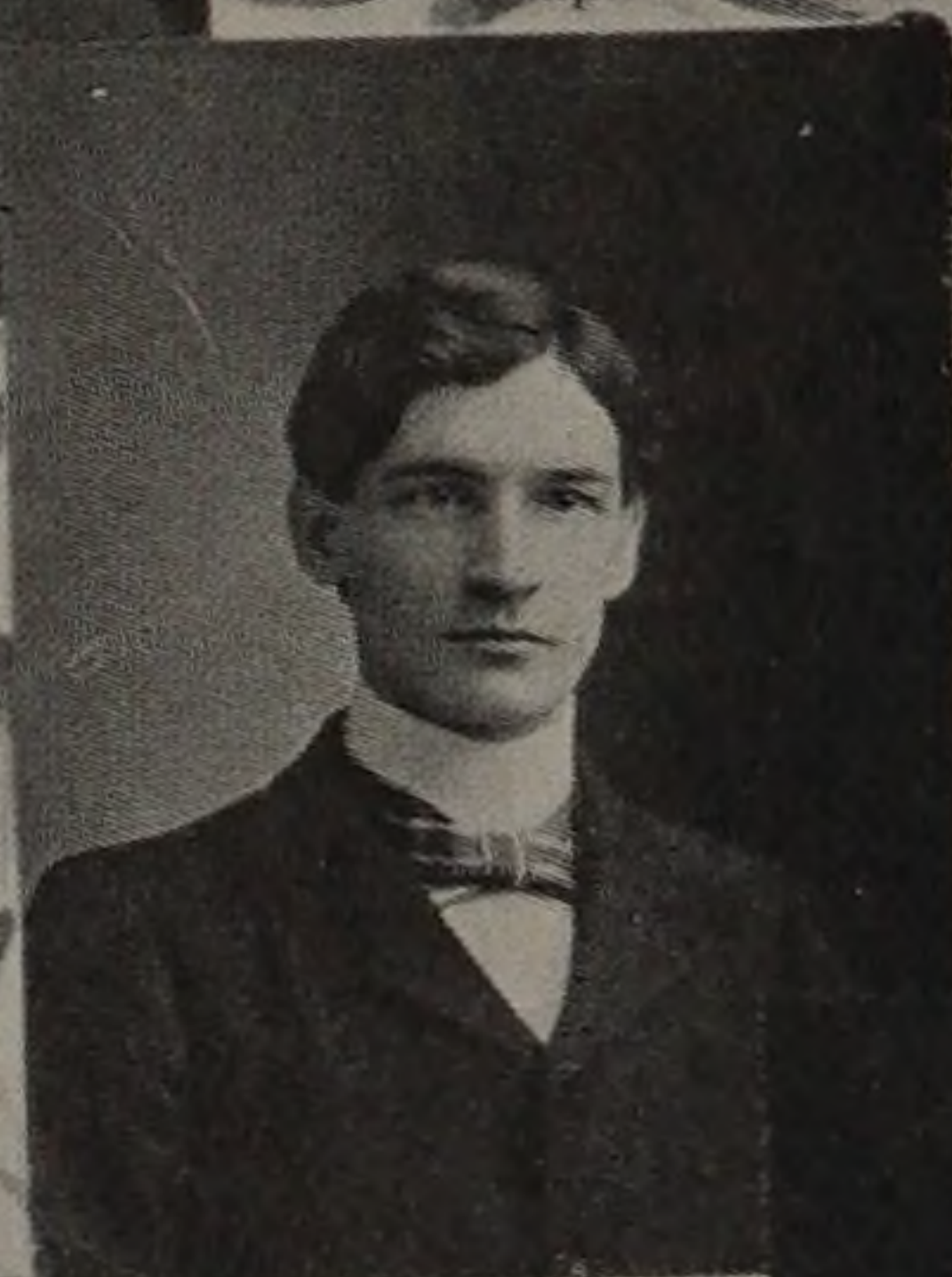
EDD V. STARKWEATHER, $\Phi K \Sigma$,
Elect.

Member Glee Club, '94-'99;
Vice Pres. Π Club, '97; Vice
Pres. Senate, '97; Class Secre-
tary, '97-'98; Secretary Tech-
nical Society, '98; Dele-
gate to $\Phi K \Sigma$ Conven-
tion, Baltimore, 1898.



CLARENCE L. TARBELL,
Mech.

Foot Ball Team, '94-'99; Mem-
ber Glee Club, '94-'99; Mem-
ber Senate Society, Member
Track Team, Member Class
Foot Ball Team, '98; Member
Class Base Ball Team, '97;
Member Class Indoor Base
Ball Team, '99; Member Class
Basket Ball Team, '99.



OTIS N. TERRY, Mech.

Foot Ball Team, '95-'99; Mem-
ber Track Team, '96-'99; Mem-
ber Class Foot Ball Team, '98;
Member Class Basket Ball
Team, '98-'99.



FRED. W. TWICHELL, Elect.

Member Technical Society.



WILLIAM WARREN, Elect.

Member Track Team, '95-'99;
Class Representative Athletic
Board of Control, '97-'98;
Member Class Track Team.



ERNEST C. WHITE, $\Phi K \Sigma$,
Mech.

Leader Glee Club, '97-'99.
Class Treas., '97-'98; Member
 Π Club, Pres. Photographical
Society, '97; Secretary Senate
Society, '97-'98; Member Tech-
nical Society, Compiler "Art
In Tunes."

