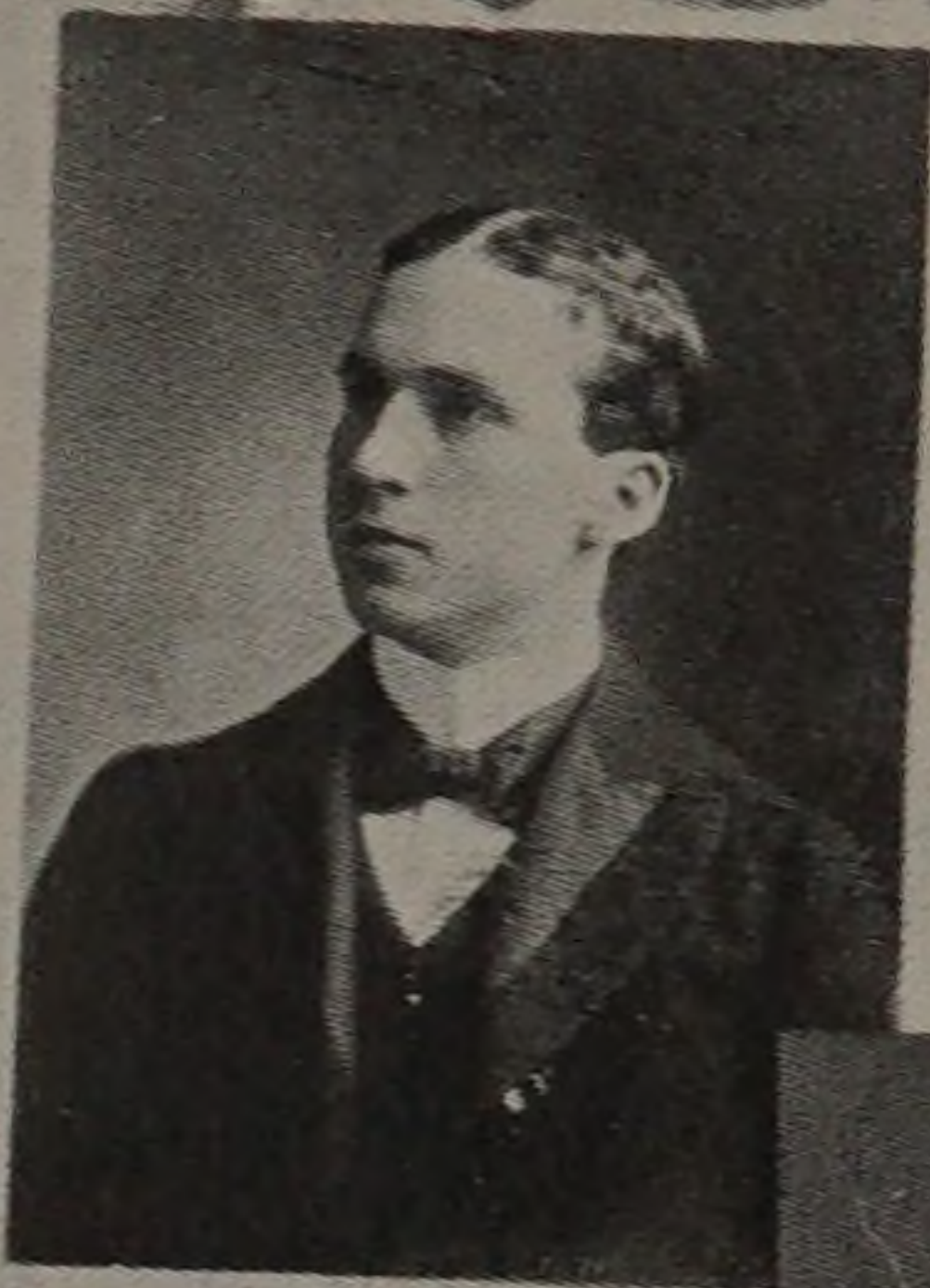


LOUIS F. MAHLER, Elect.
Member Senate Society.



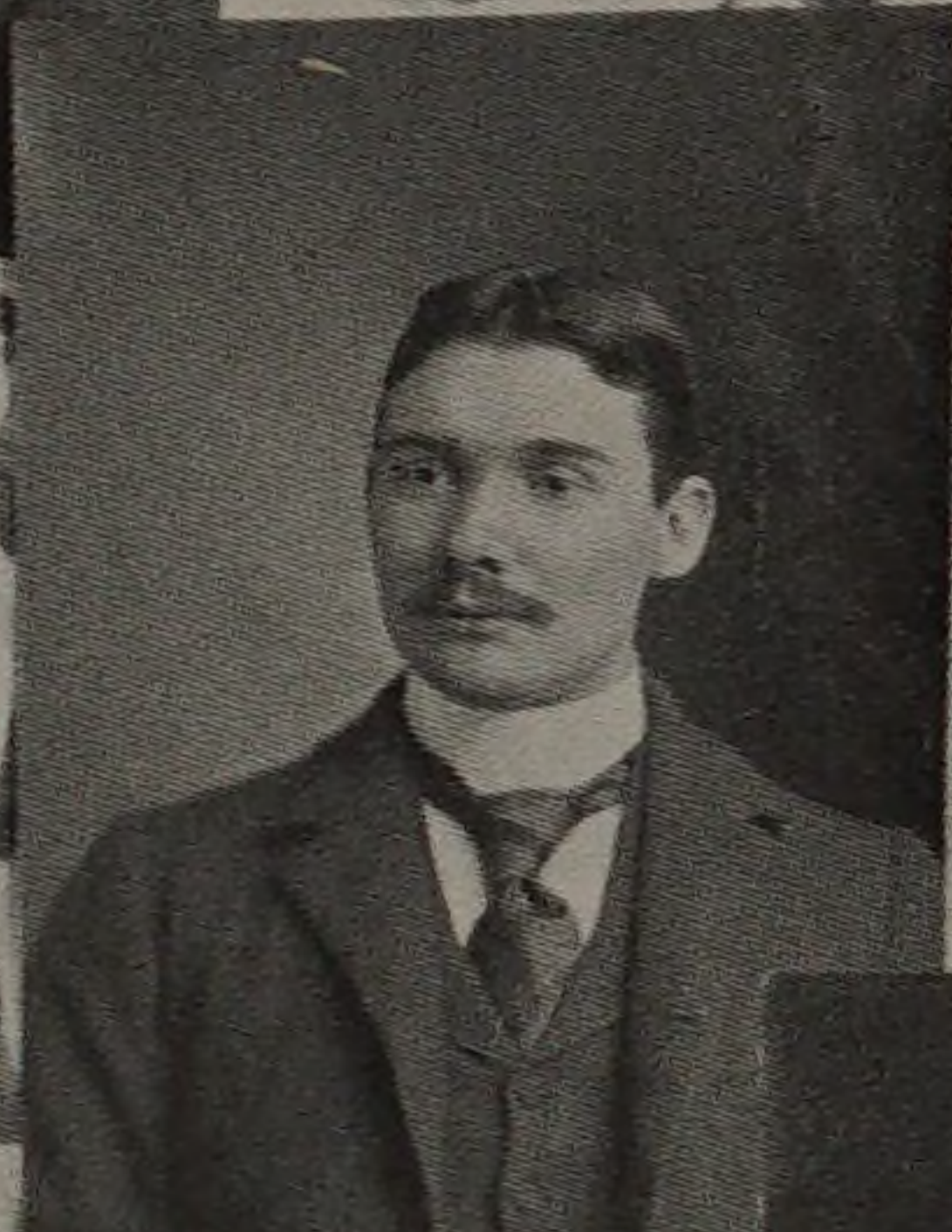
OSCAR B. MARIENTHAL,
Arch.

Member Thumbtack Club,
Class Indoor Ball Team, '98;
Class Base Ball Team, '97.



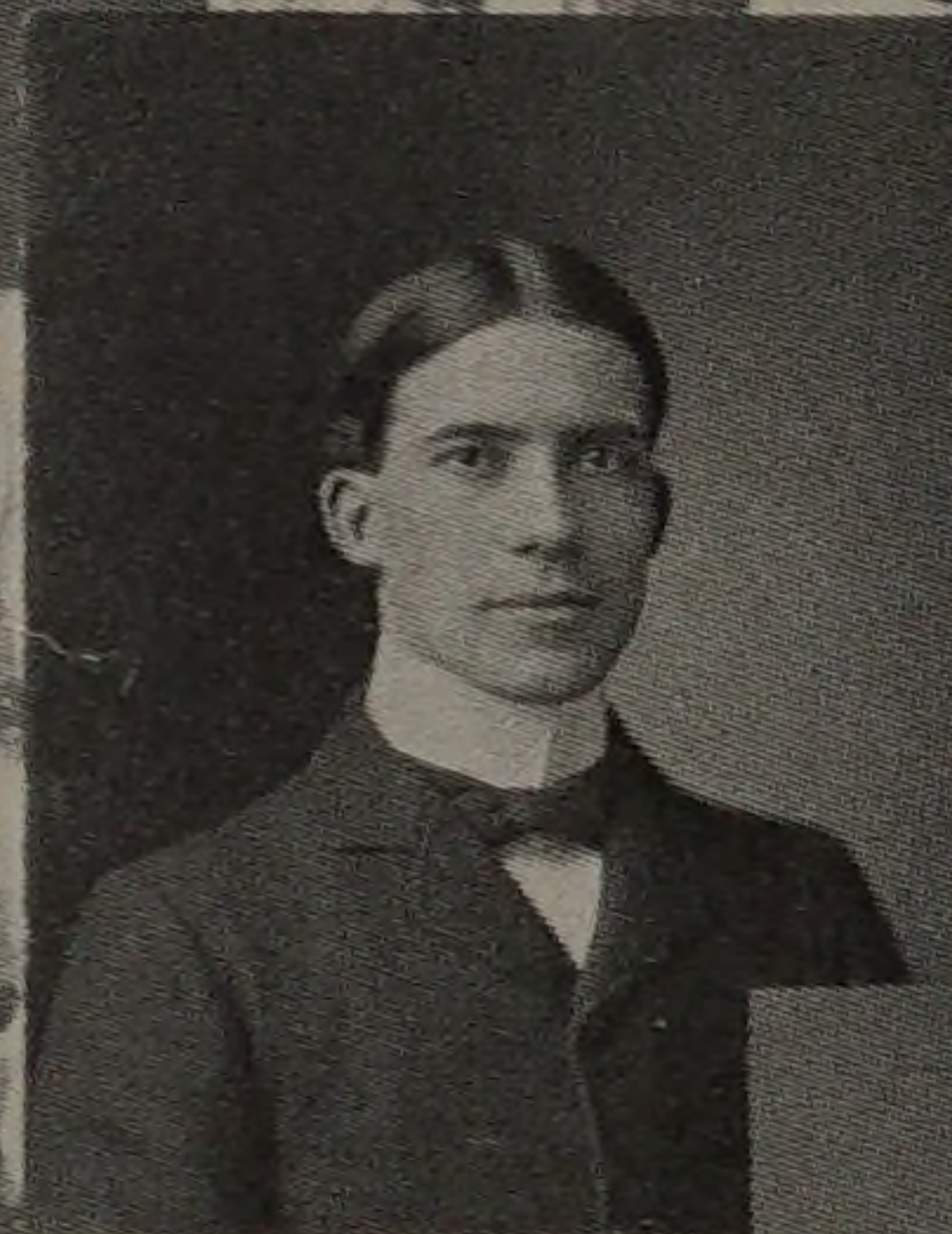
WILL D. MATTHEWS, $\Phi K \Sigma$,
Elect.

Class Secretary, '95-'96; Sec-
retary Senate Society, '96;
Member Π Club, Member Glee
Club, '94-'98; Critic Technical
Society, '97-'98; Pres. Senate
Society, '97-'98; Editor-in-
Chief Integral, '98.



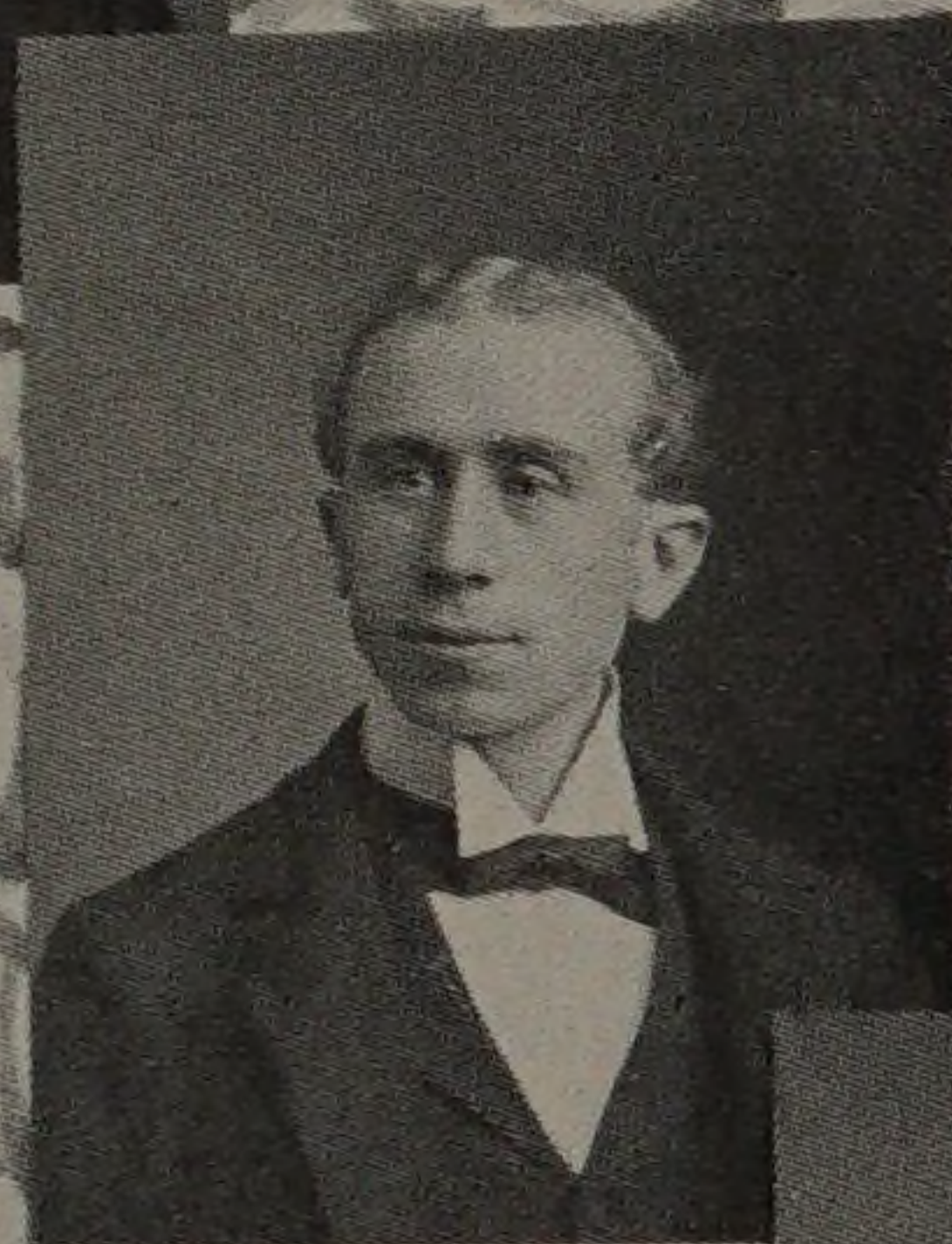
CHARLES S. MORSE, Elect.

Vice Pres. Athletic Board of
Control, '98-'99; Manager
Track Team, '97-'98, '98-'99;
Captain Track Team, '95-'96;
Asst. Mgr. Base Ball Team,
'95-'96; Class Foot Ball Team,
'98.



ELMER H. OLSON, Elect.

Second Vice Pres. Technical
Society, '99; Member Photo-
graphical Society; Member
Class Indoor Base Ball Team.



WILLIAM B. PAVEY, Mech.

Member Glee Club; Track
Team, '97; Captain Mech.
Base Ball Team, '97; Captain
Class Indoor Track Team, '98;
Class Representative Inte-
gral, '99; Class President, '99.

