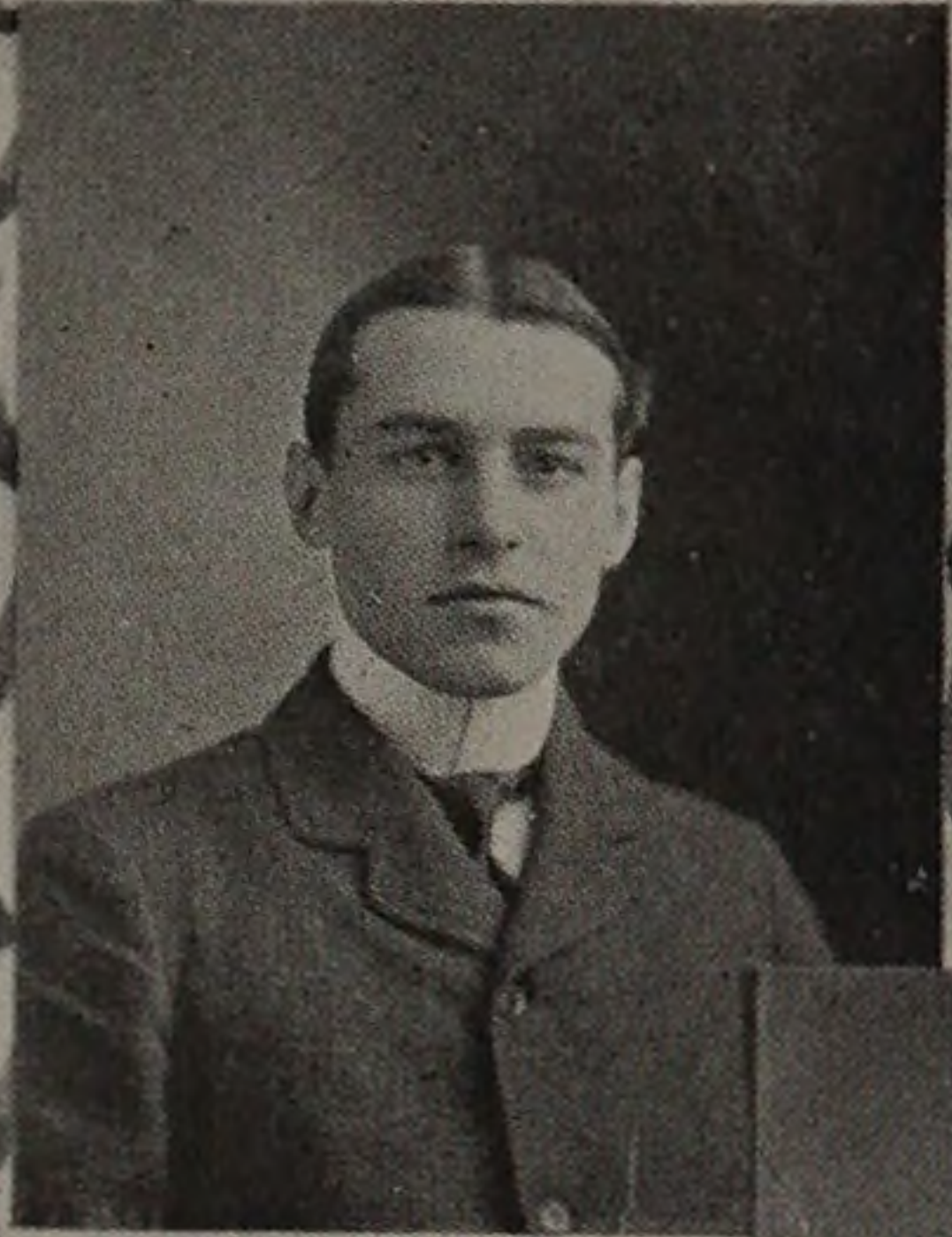


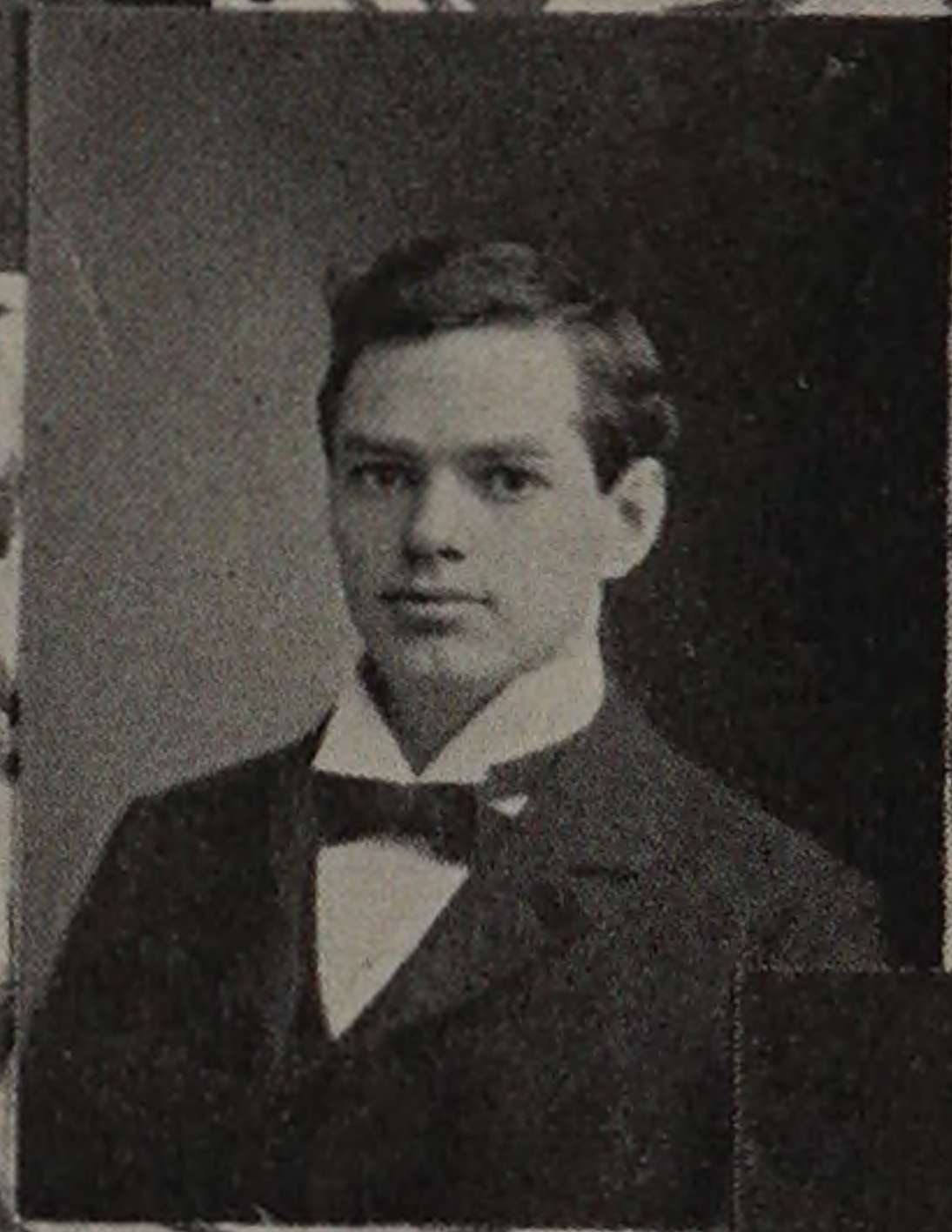
SUMNER E. BIPPUS, $\Phi K \Sigma$, Elect.

Member Glee Club; Treas. Senate Society, '98; Treas. Technical Society, '97; Vice Pres. Π Club, '98; Pres. Athletic Board of Control, '98-'99; Asst. Bus. Mgr., Integral '98; Bus. Mgr., Integral '99; Track Team, '98; Class Foot Ball Team, '98; Class Track Team, '98; Class Indoor Base Ball Team.



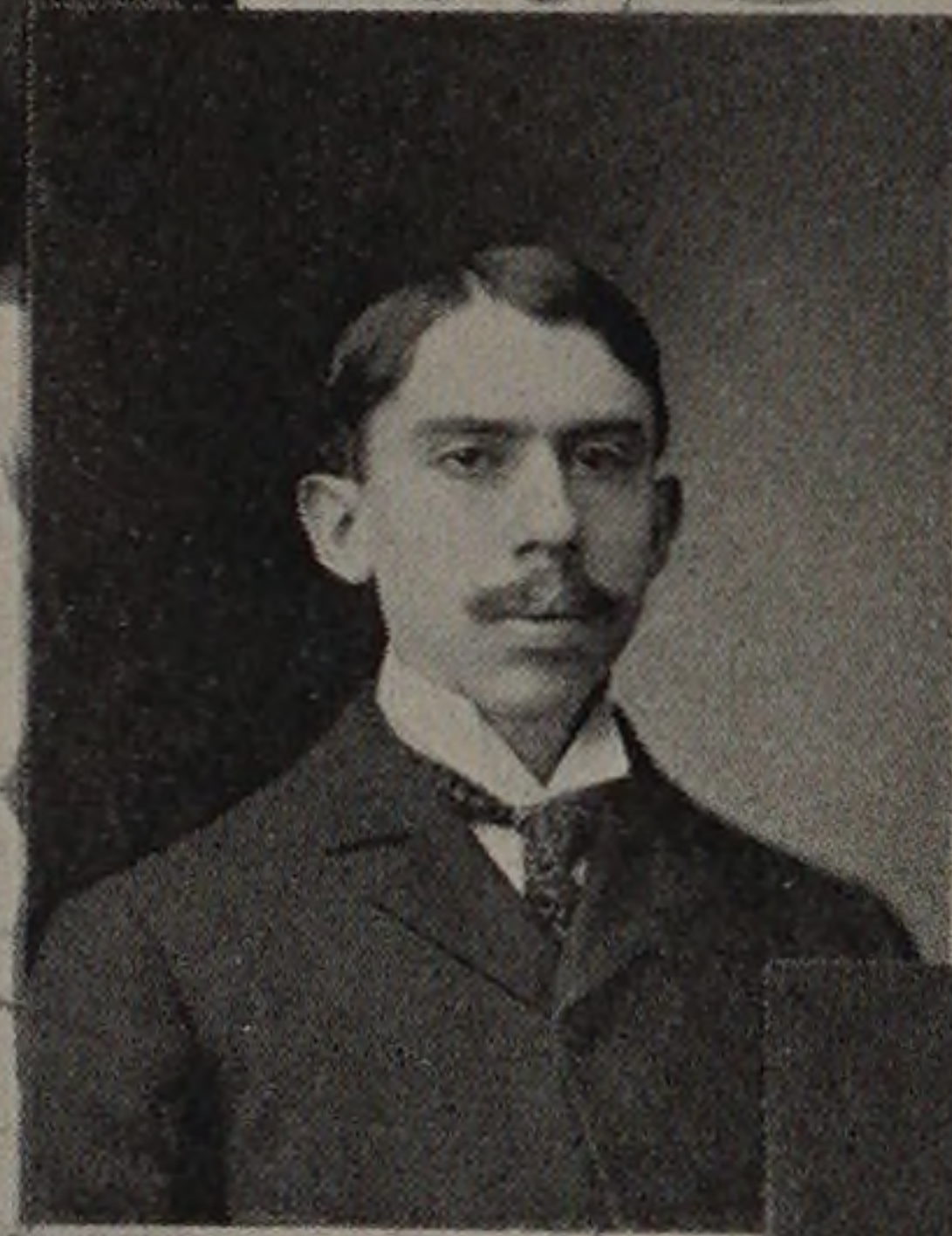
ARTHUR J. BURR, Elect.

Member Technical Society, '98.



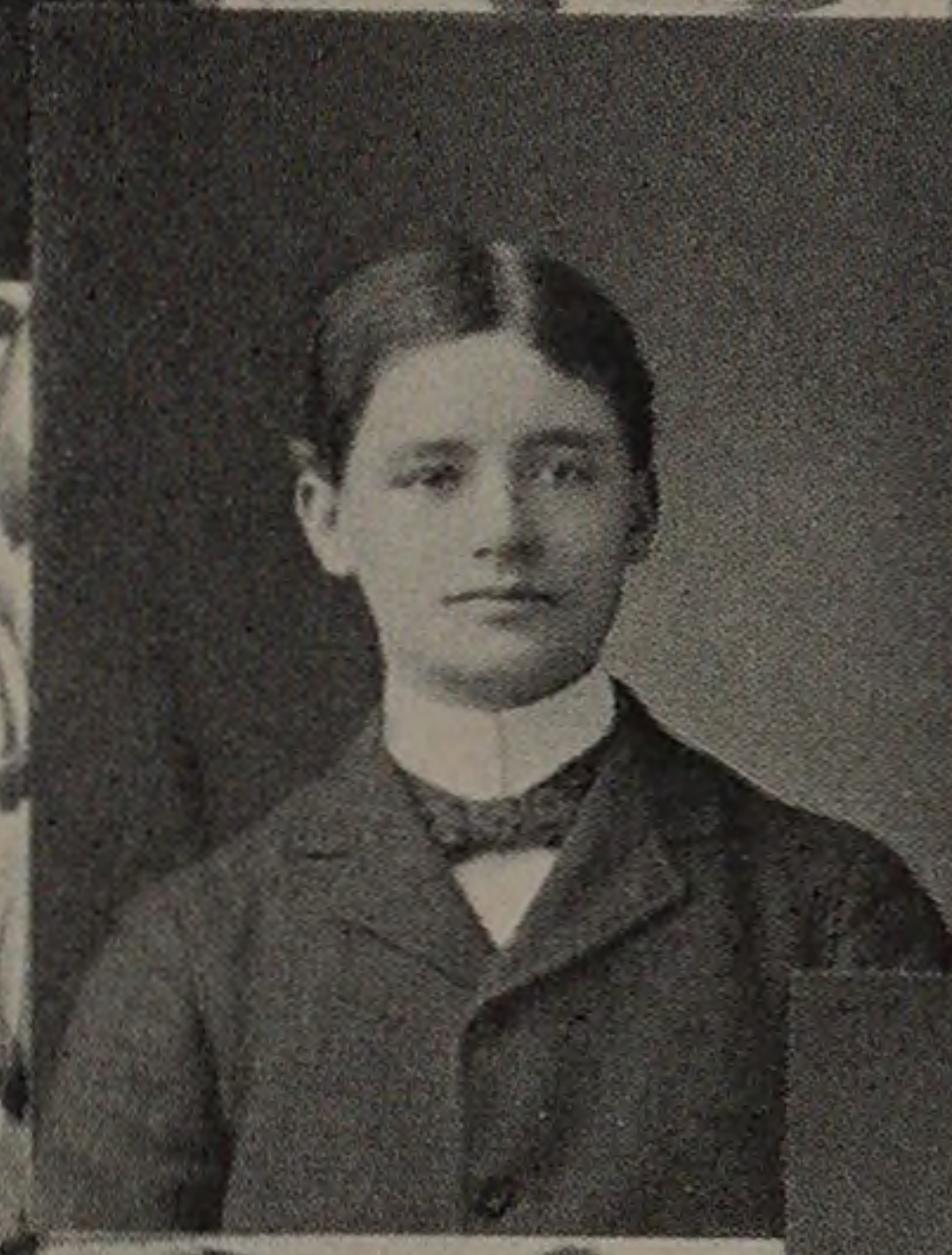
SIDNEY T. COREY, Elect.

Class President, '96-'97; Class Representative Fulcrum Board, '97-'98.



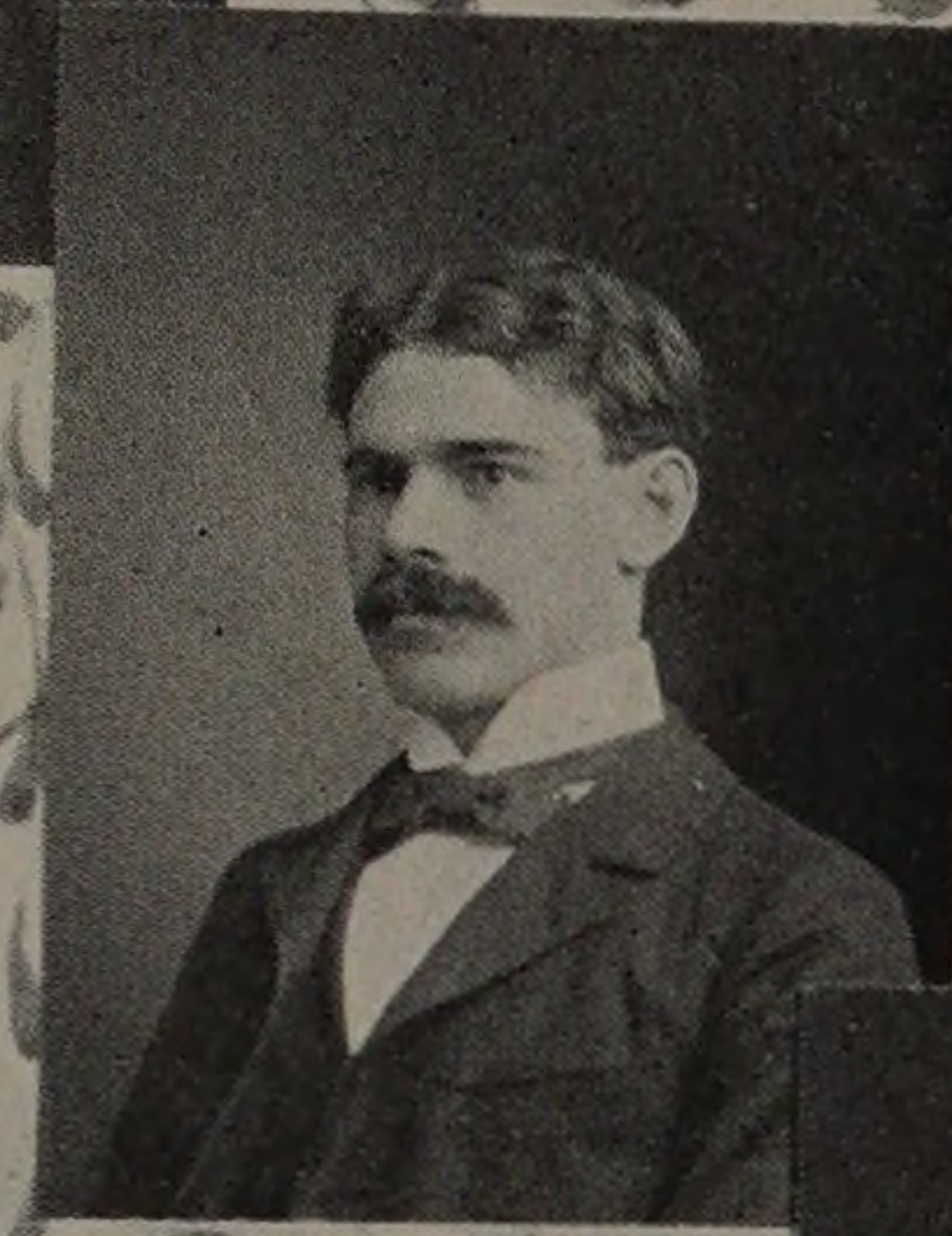
LOUIS ELLIOTT, Elect.

Class Vice Pres., '96-'97; Class Foot Ball Team, '98; Class Track Team, Class Base Ball Team, '97.



SAMUEL C. FIDDYMENT, Elect.

Foot Ball Team, '97-'98, '98-'99; Class Track Team, Class Foot Ball Team, '98; Class Indoor Base Ball Team, '98.



A. HOMER GOODHUE, Mech.

Class Pres., '98; Member Glee and Mandolin Clubs, '95-'99; Asst. Bus. Mgr., Glee and Mandolin Clubs, '98-'99; Secretary Athletic Board of Control, '98-'99; Class Treasurer, '96-'97; Class Foot Ball Team, '98; Class Base Ball Team, '97; Class Indoor Base Ball Team, '99.

