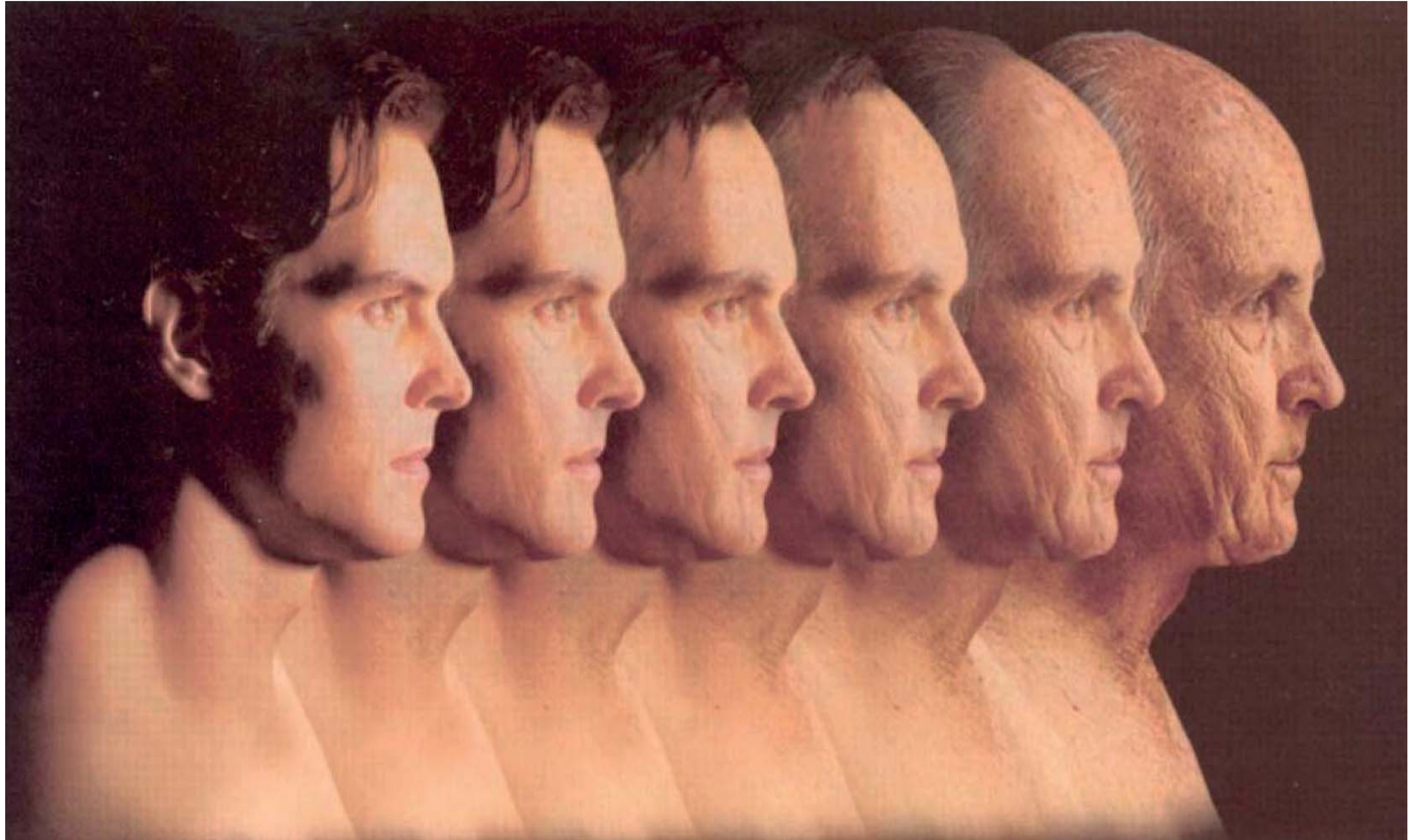


# Re-generation

## Senior Welfare Center



Arch 593 Master Project  
Professor Susan Conger-Austin

Sung

## Main Statement

As the dramatic economic development in Korea brought more people to cities, families spread out and people had no local, extended family to fall back upon when they were in need. The result was a growing number of single and widowed people who had no one to take care of them in their old age. However, People have become restless, naive and careless about other people's needs—especially their old relatives and folks. That's when the problems occur.

Therefore, I want to make the senior center to allow the elderly to discover new places and new uses for them, to watch the activities of others between social spaces that can promote interaction among users, and to exercise like care services itself along the dynamic circulations. I also make the massing of the building that act as a landmark to bring the excitement of the welfare center not just to the users but also to passersby for regenerating people and the context as well.

## Case Statement

**The number of older persons has tripled over the last 50 years; it will more than triple again over the next 50 years - UNPD -**

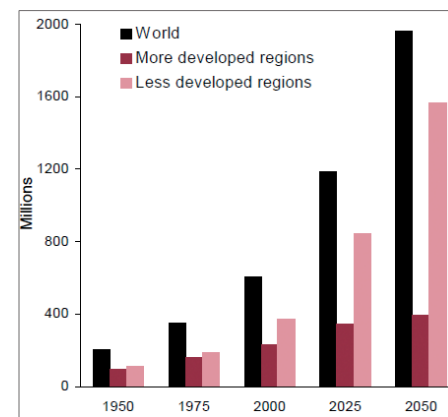
In 1950, there were 205 million persons aged 60 or over throughout the world (figure 1). In 2000, the number of persons aged 60 or over increased about three times to 606 million, and the number of countries with more than 10 million people aged 60 or over increased to 12, including 5 with more than 20 million older people.

Over the first half of the current century, the global population 60 or over is projected to expand by more than three times to reach nearly 2 billion in 2050 (figure 2).

**More developed regions have relatively high proportions of older persons - UNPD -**

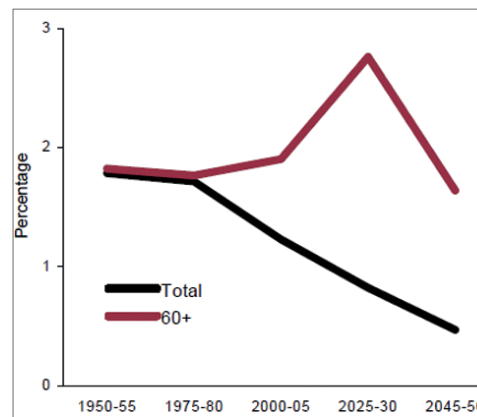
The more developed countries are in general in a more advanced stage of the demographic transition; thus, the proportions of older persons there are projected to remain significantly higher than the proportions in the less developed regions well into the twenty-first century. Almost one fifth of the population in the more developed regions, but only 8 per cent in the less developed regions, was aged 60 or older in 2000, up from 12 per cent and 6 per cent respectively in 1950 (figure 3).

(Figure 1)



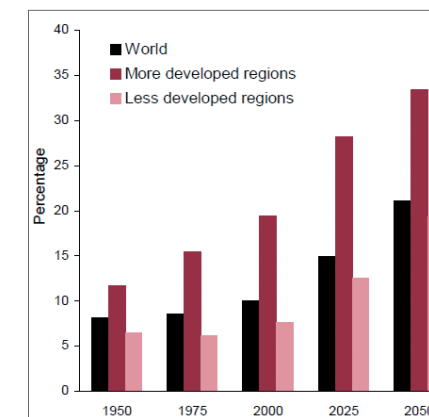
Population aged 60 or over: world and development regions, 1950-2050

(Figure 2)



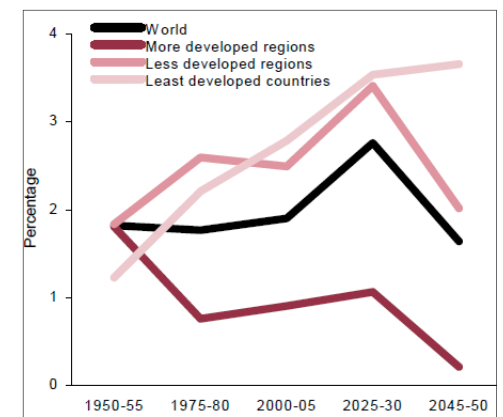
Average annual growth rate of total population and population aged 60 or over: world, 1950-2050

(Figure 3)



Proportion of population aged 60 or over: world and development regions, 1950-2050

(Figure 4)



Average annual growth rate of population 60 or over: world and development regions, 1950-2050

**The older population is growing faster than the total population in practically all regions of the world-and the difference in growth rates is increasing - UNPD -**

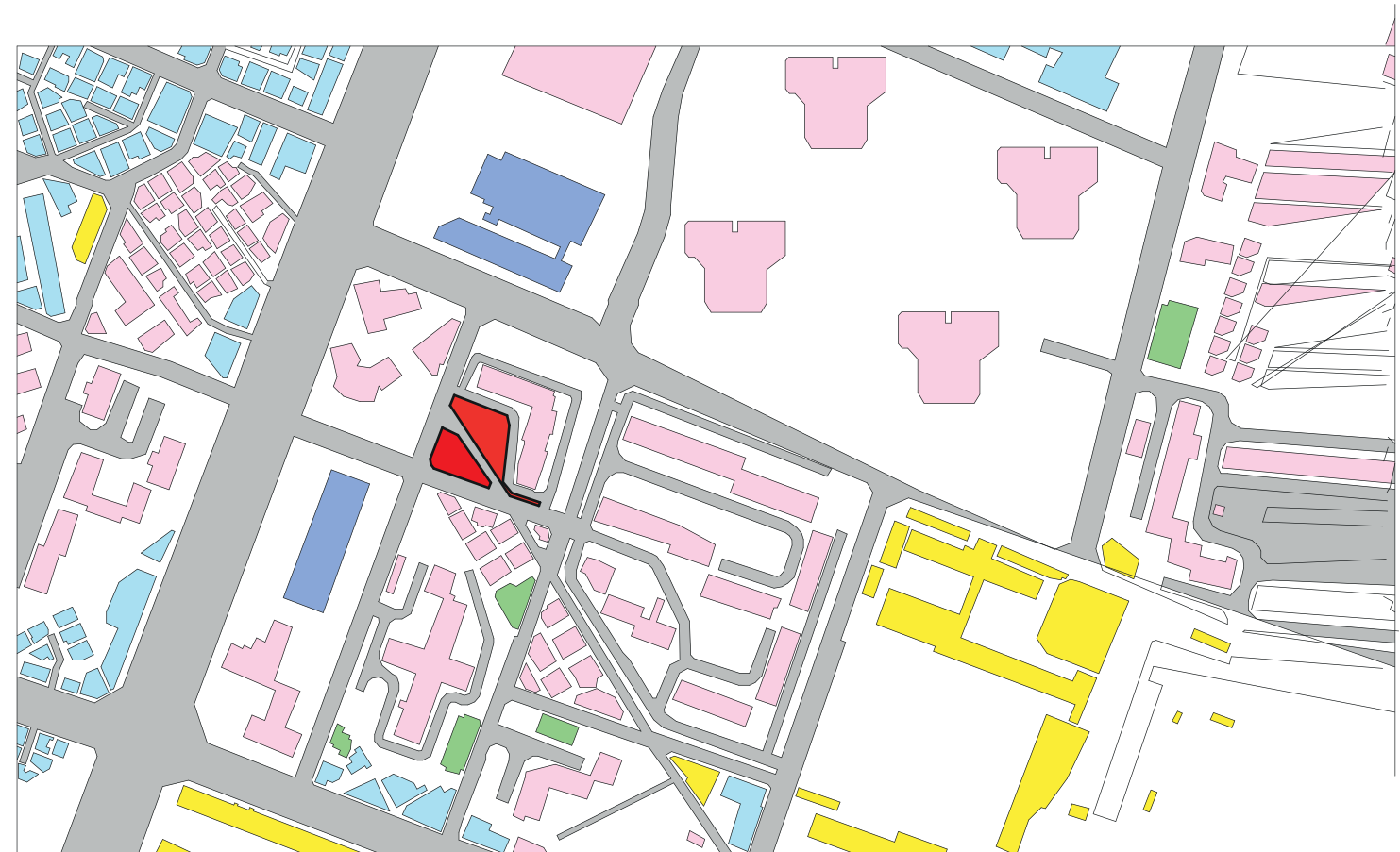
In the period 1950-1955, the global average annual rate of increase in the number of persons aged 60 years or over was only slightly higher than the rate for the total population (both around 1.8 per cent) (figure 2).

Rapidly aging populations are threatening the economies of many countries, but some are experiencing the effects faster than others.

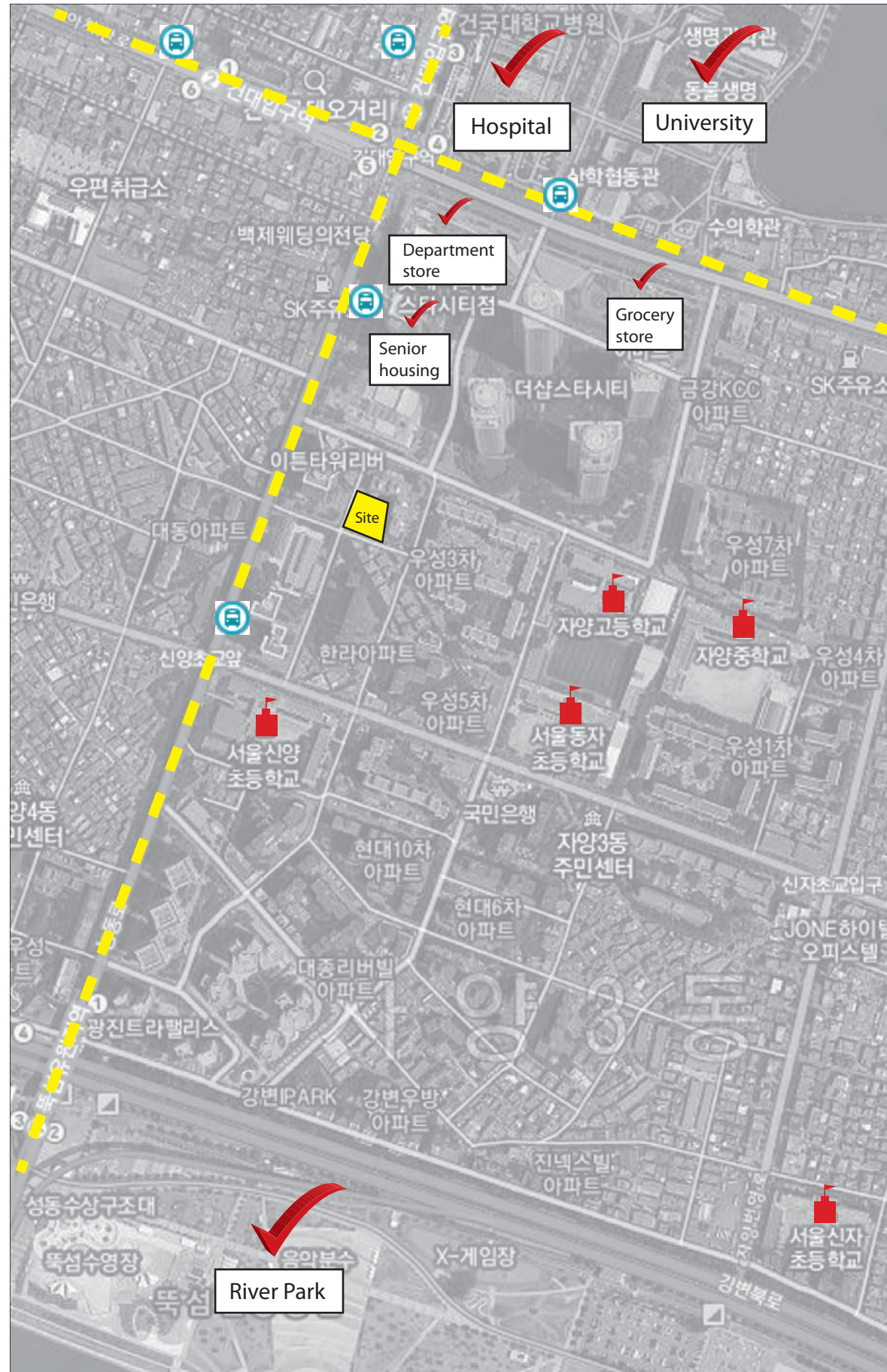
In the next few decades, the over-60 demographic is expected to grow to compose more than ten percent of populations in many nations around the world, according to the European Commission's population projections. However, South Korea will experience that growth at a much faster pace.



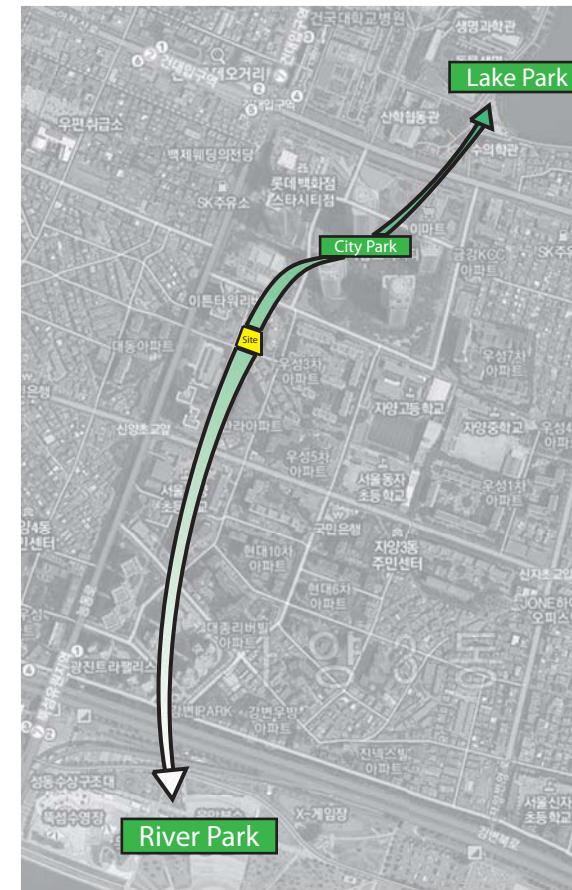
N  
Figure/Ground



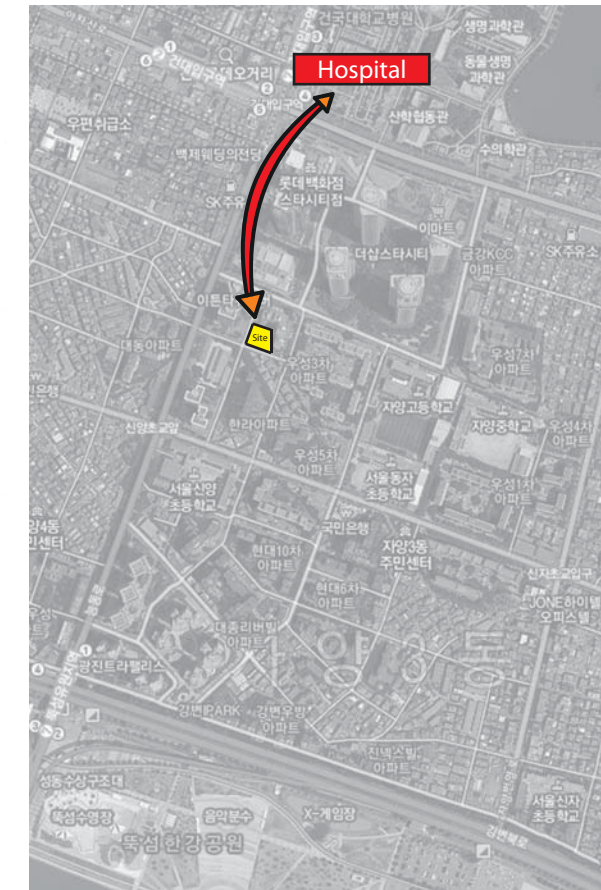
Site  
Residential  
Commercial  
Educational  
Institutional  
Religious



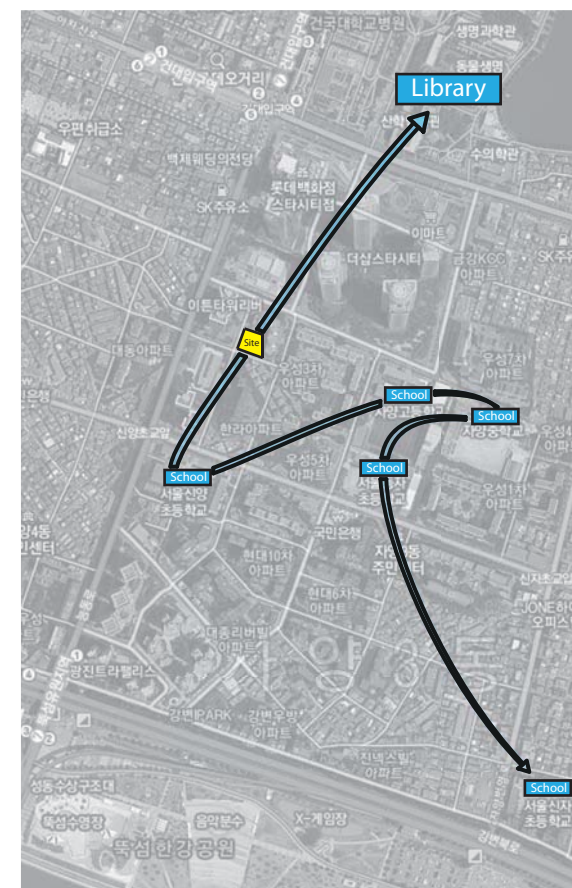
Site Nodes



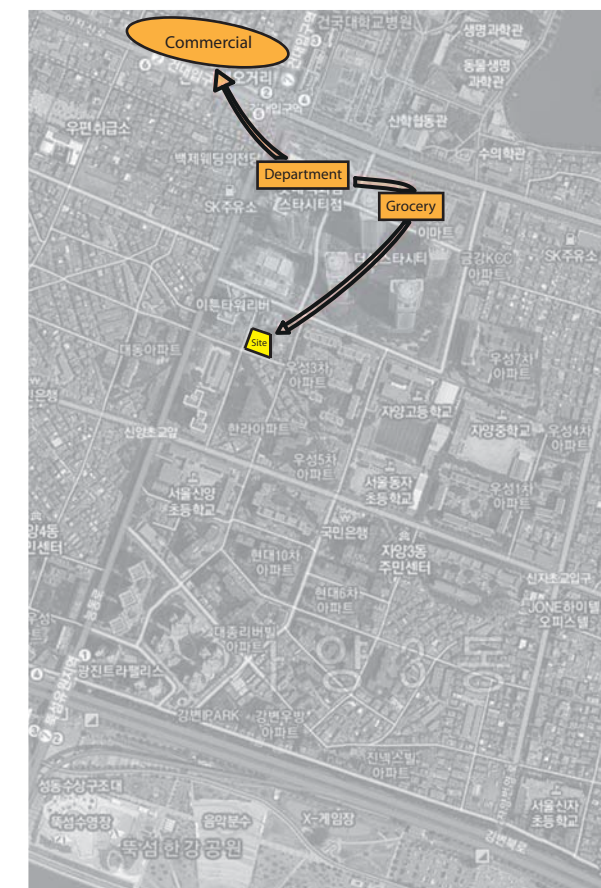
Green Flow



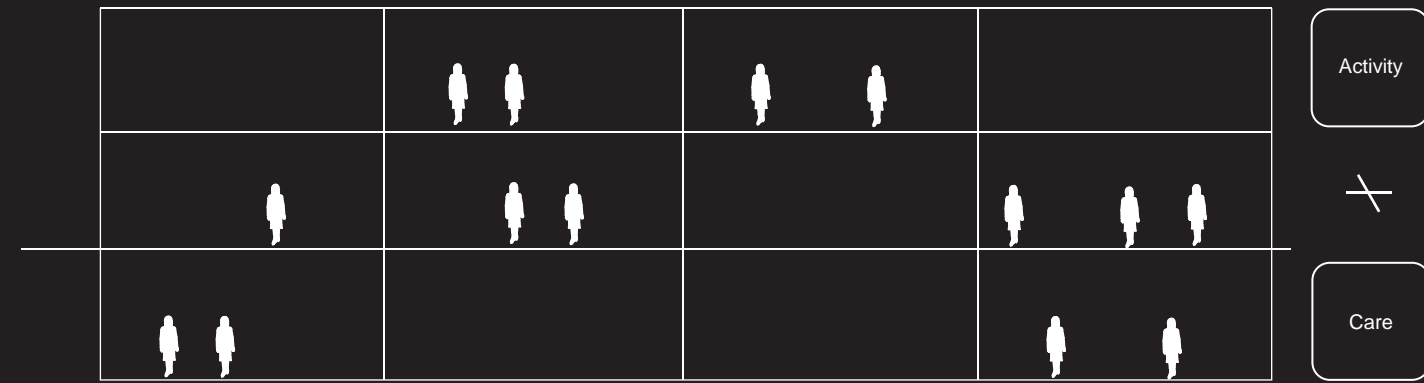
Care-service Flow



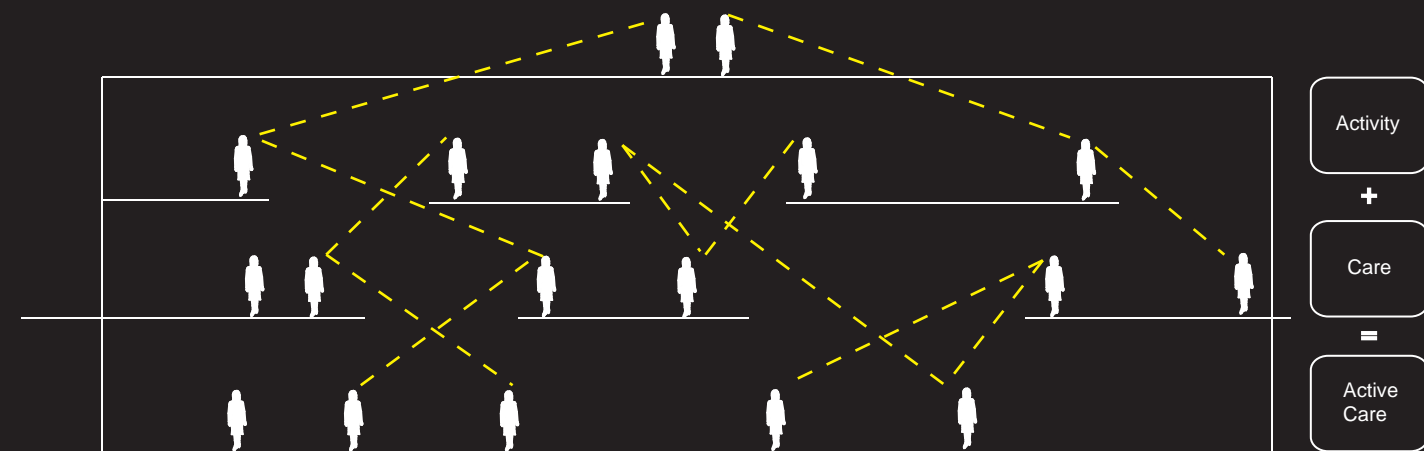
Educational Flow



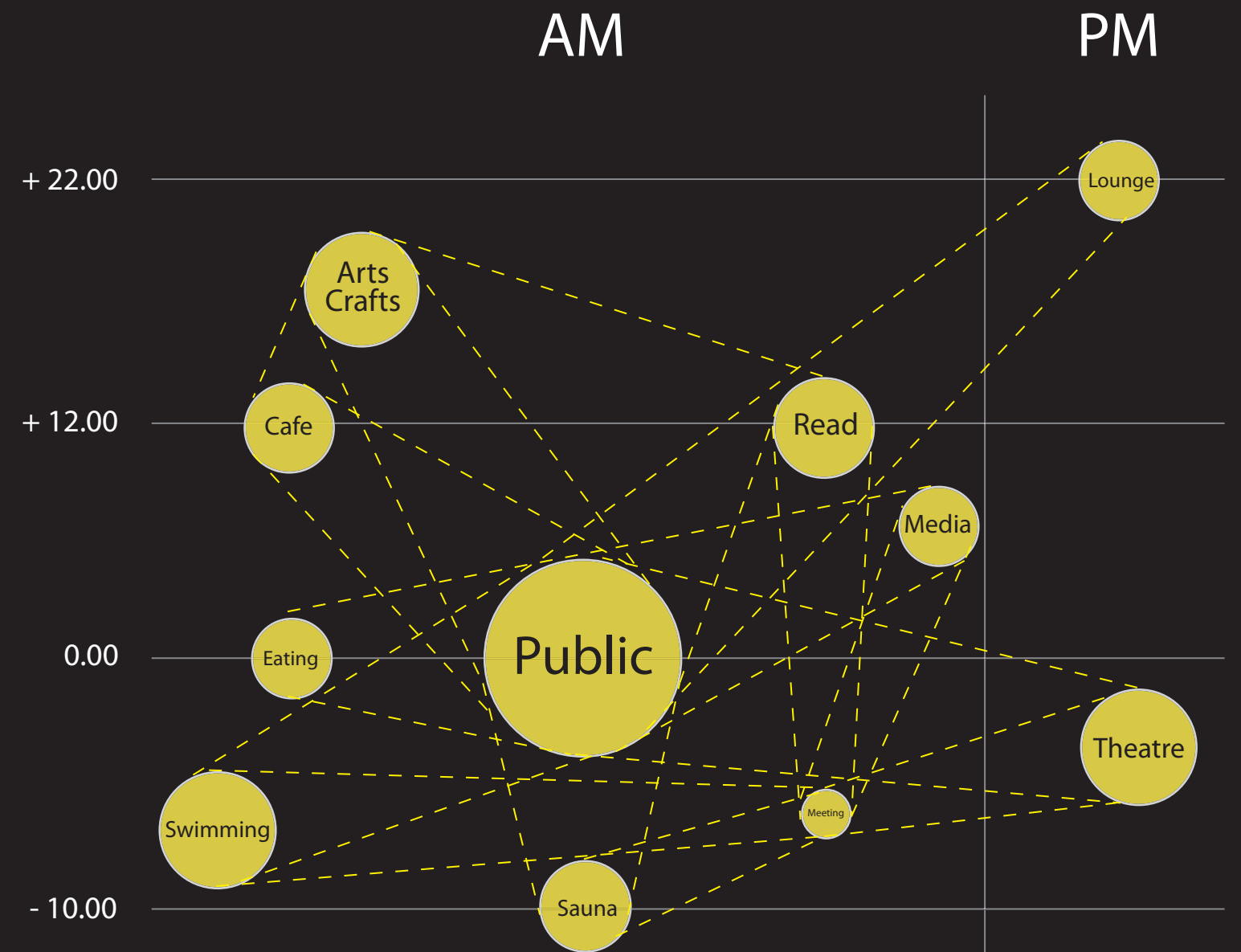
Commercial Flow



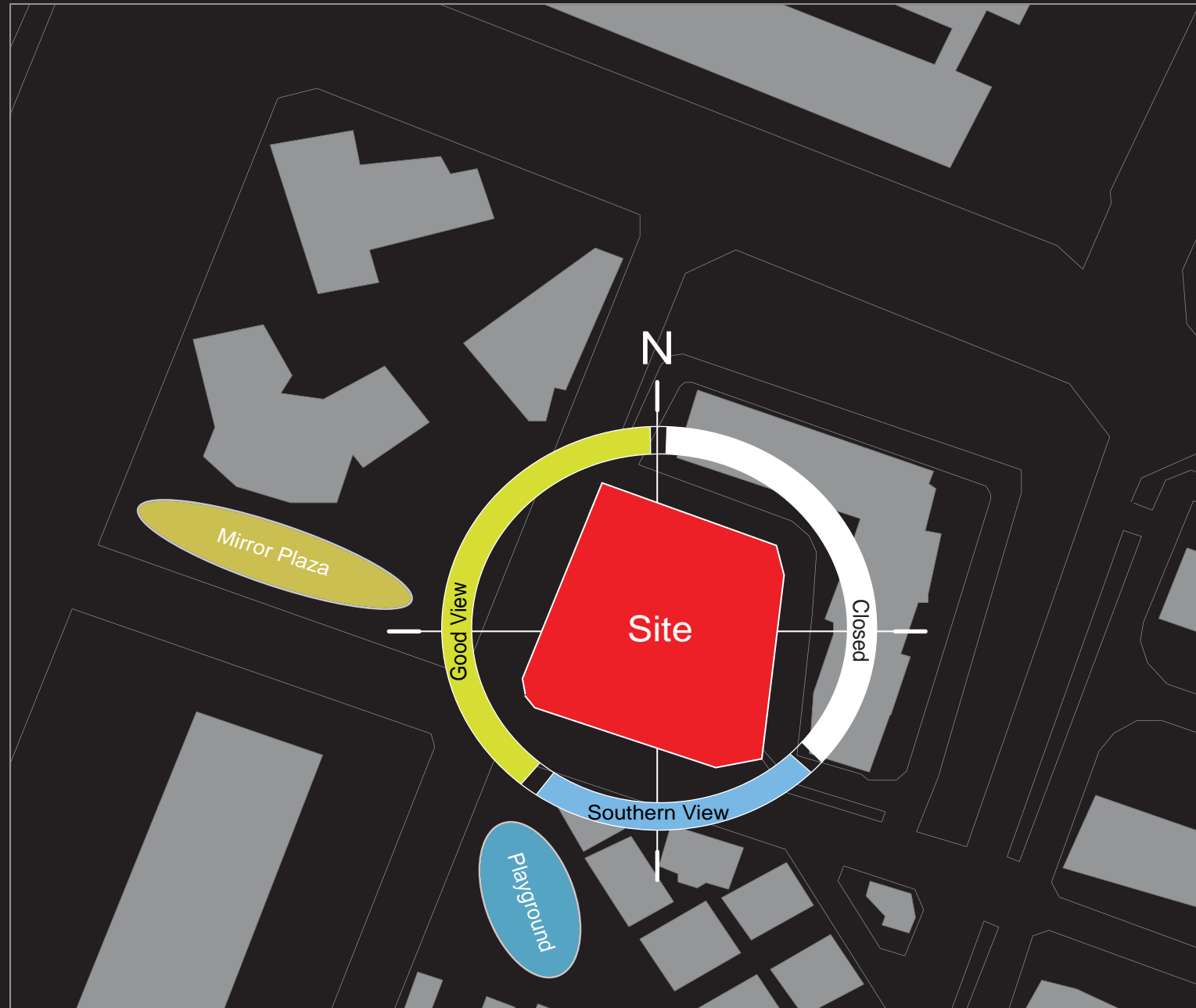
Conventional



Interactive



Interactive Activity

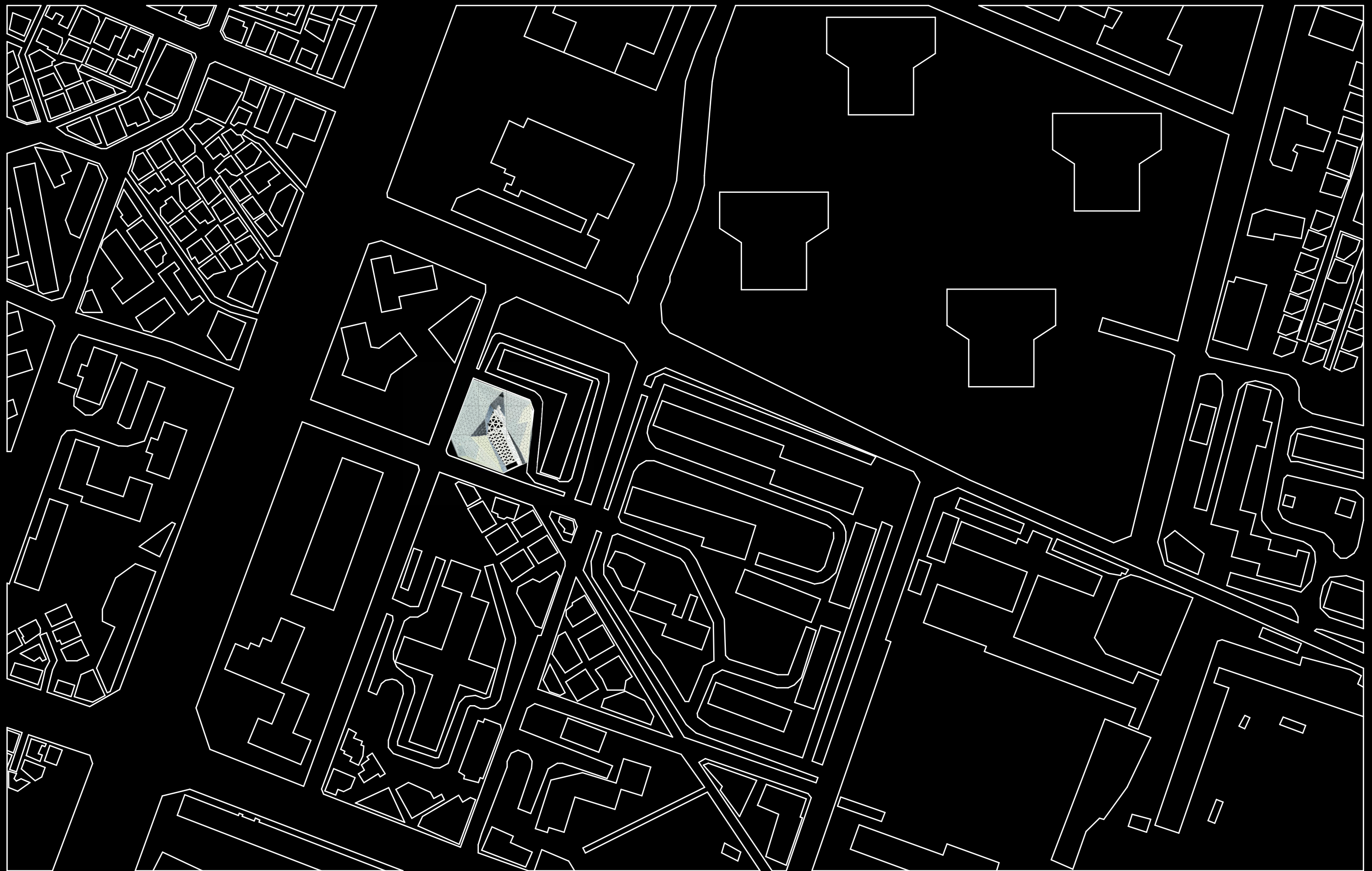


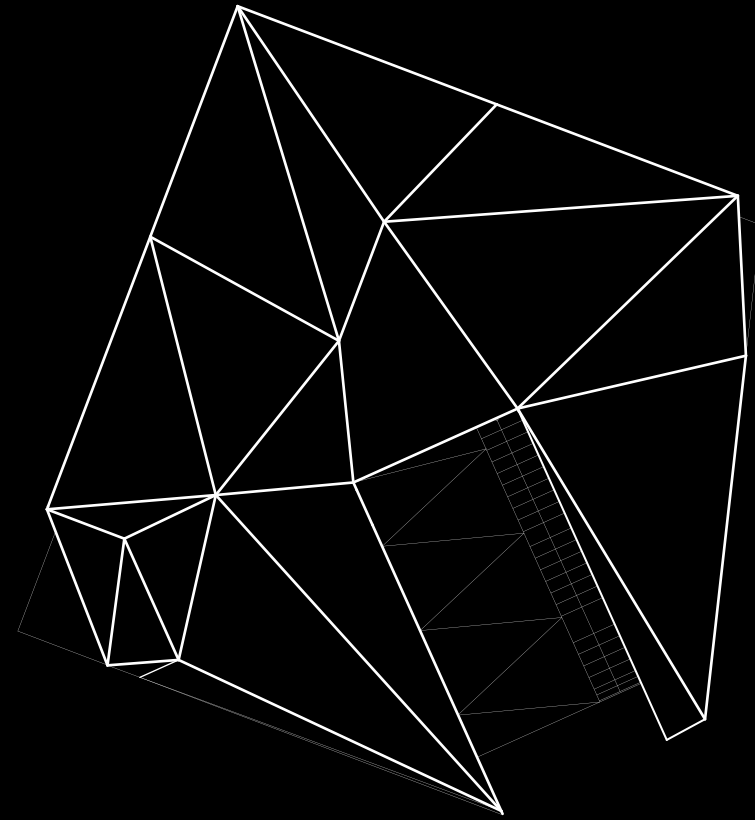
View



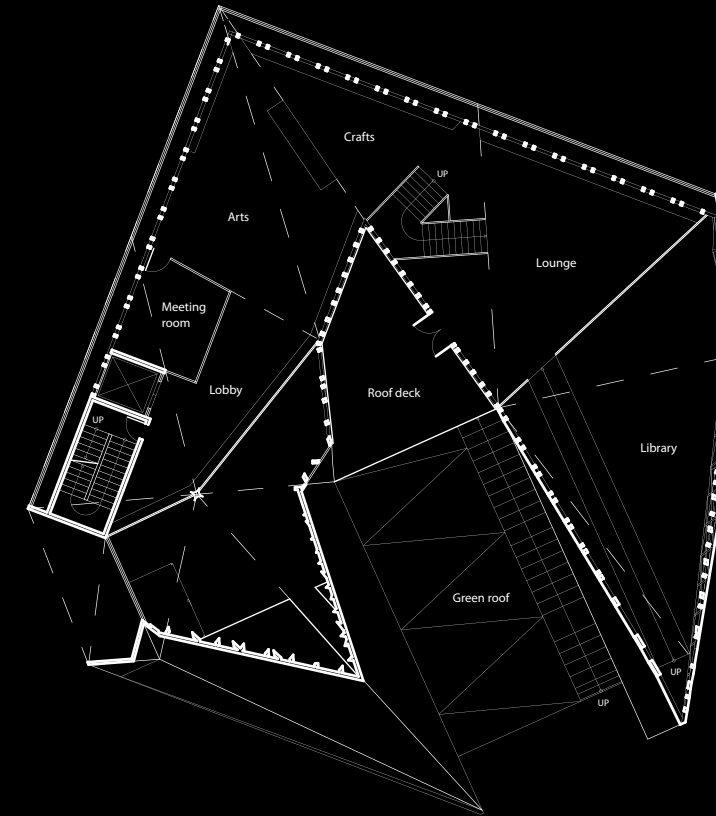
Site strategy

 New development  Old street  Access

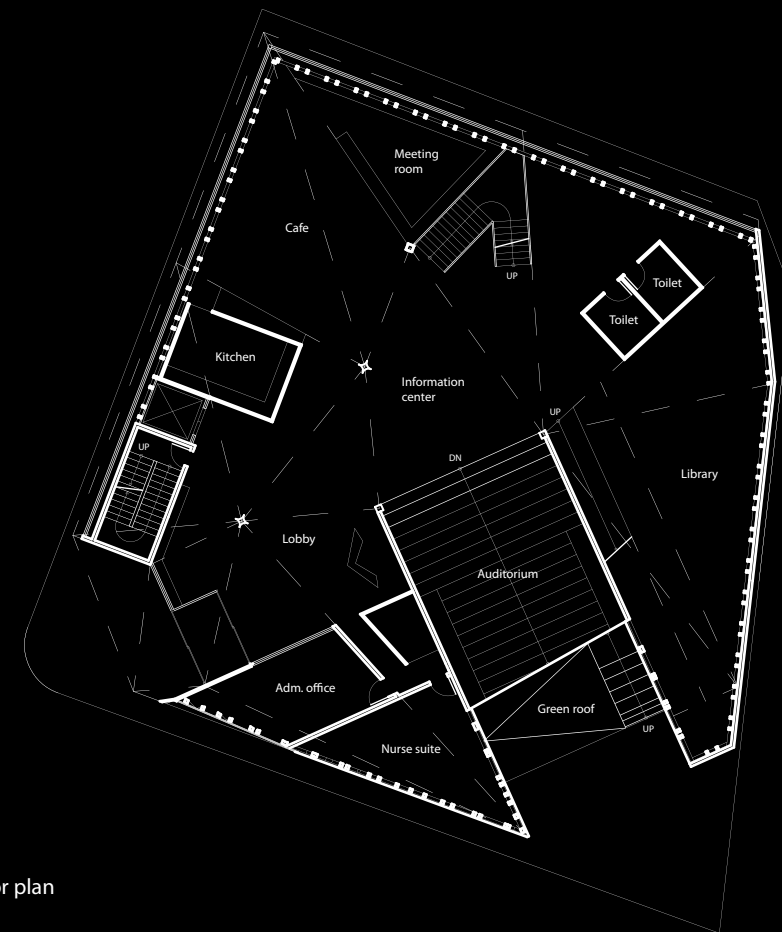




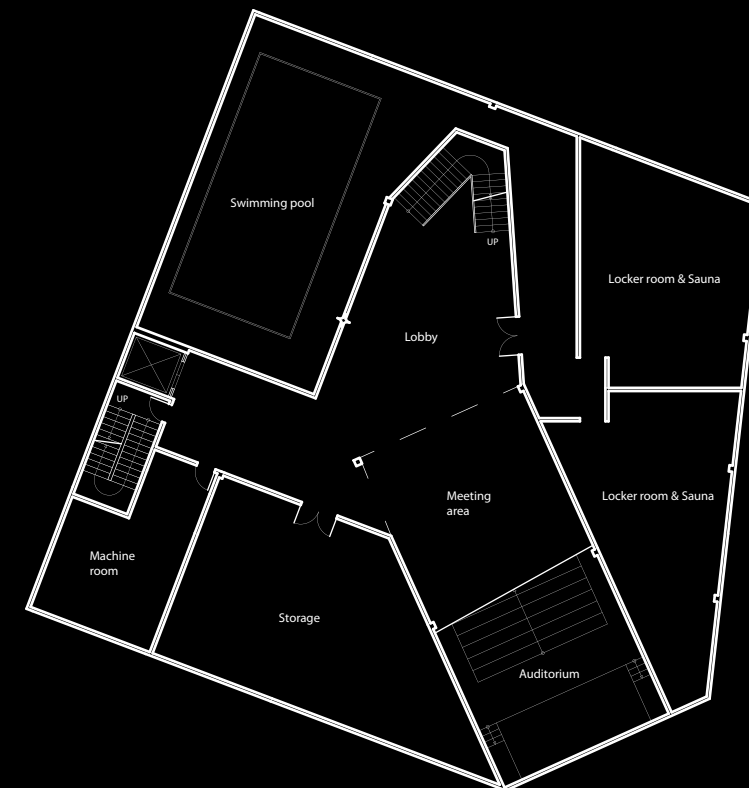
Roof plan



Second floor plan



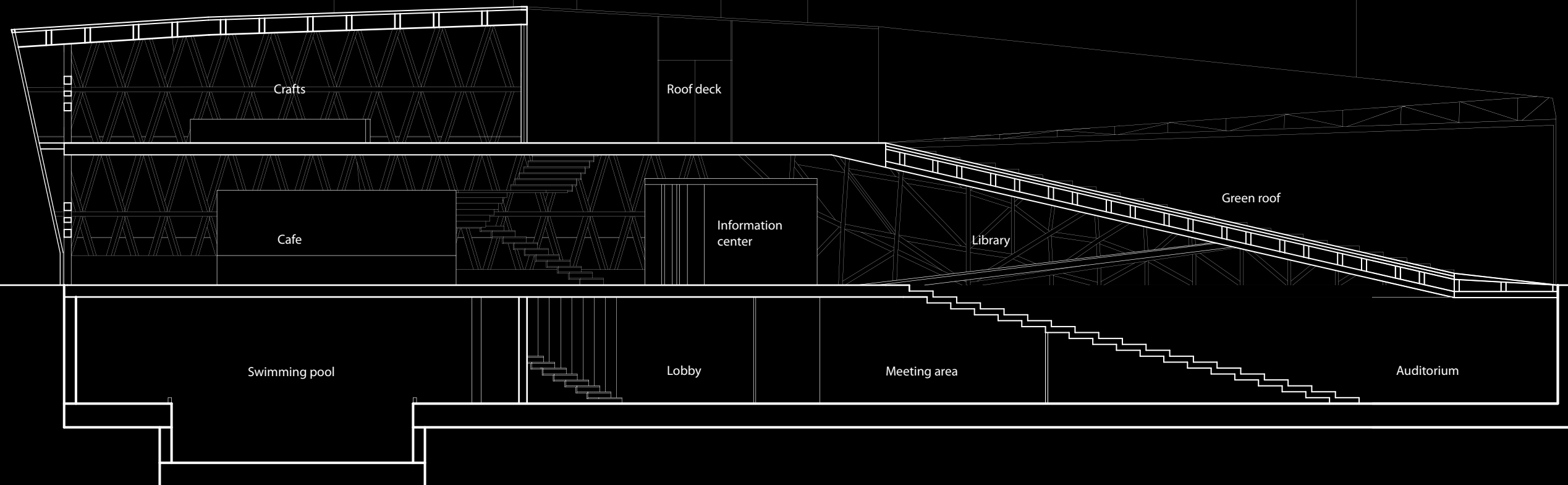
Ground floor plan

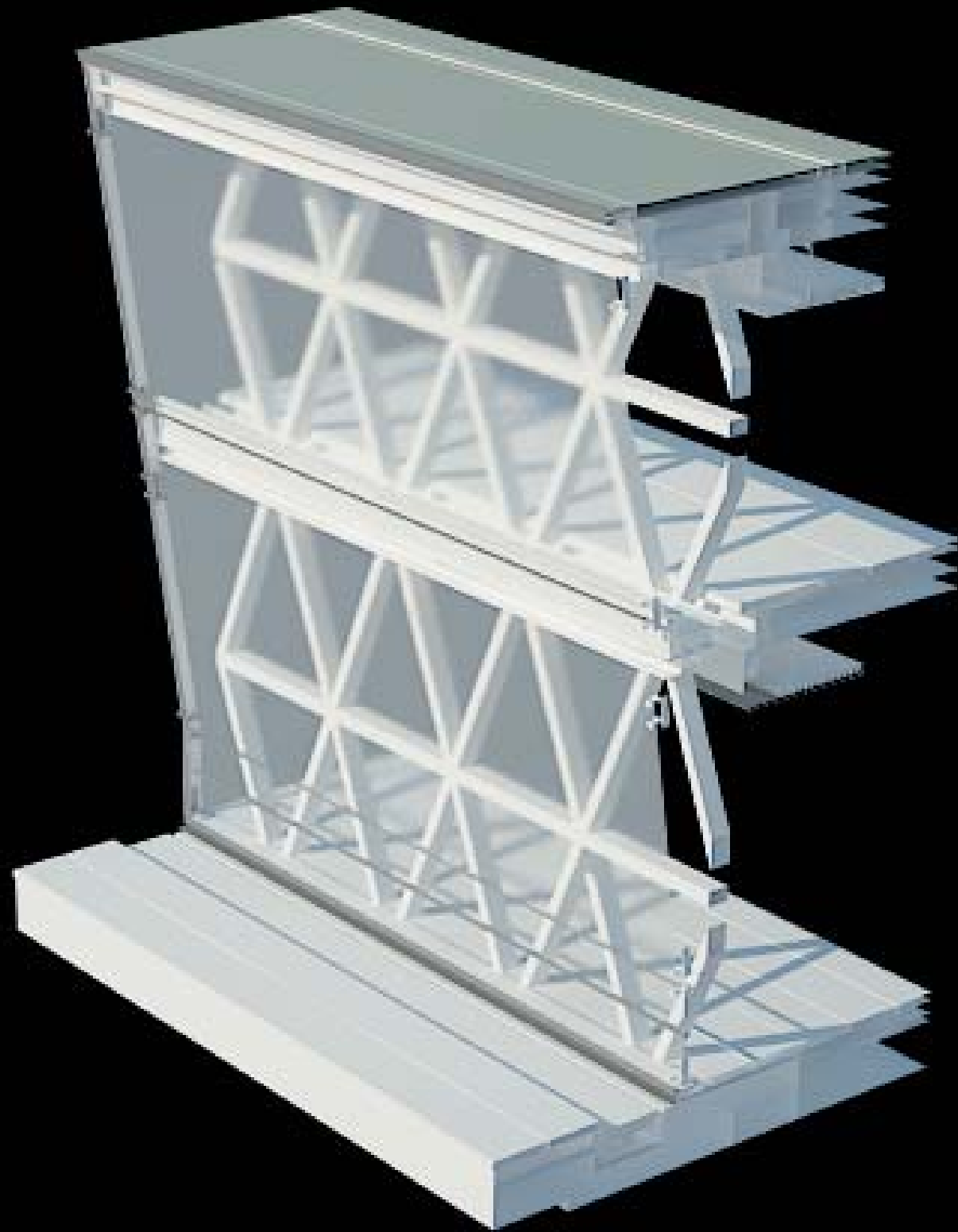


Basement floor plan

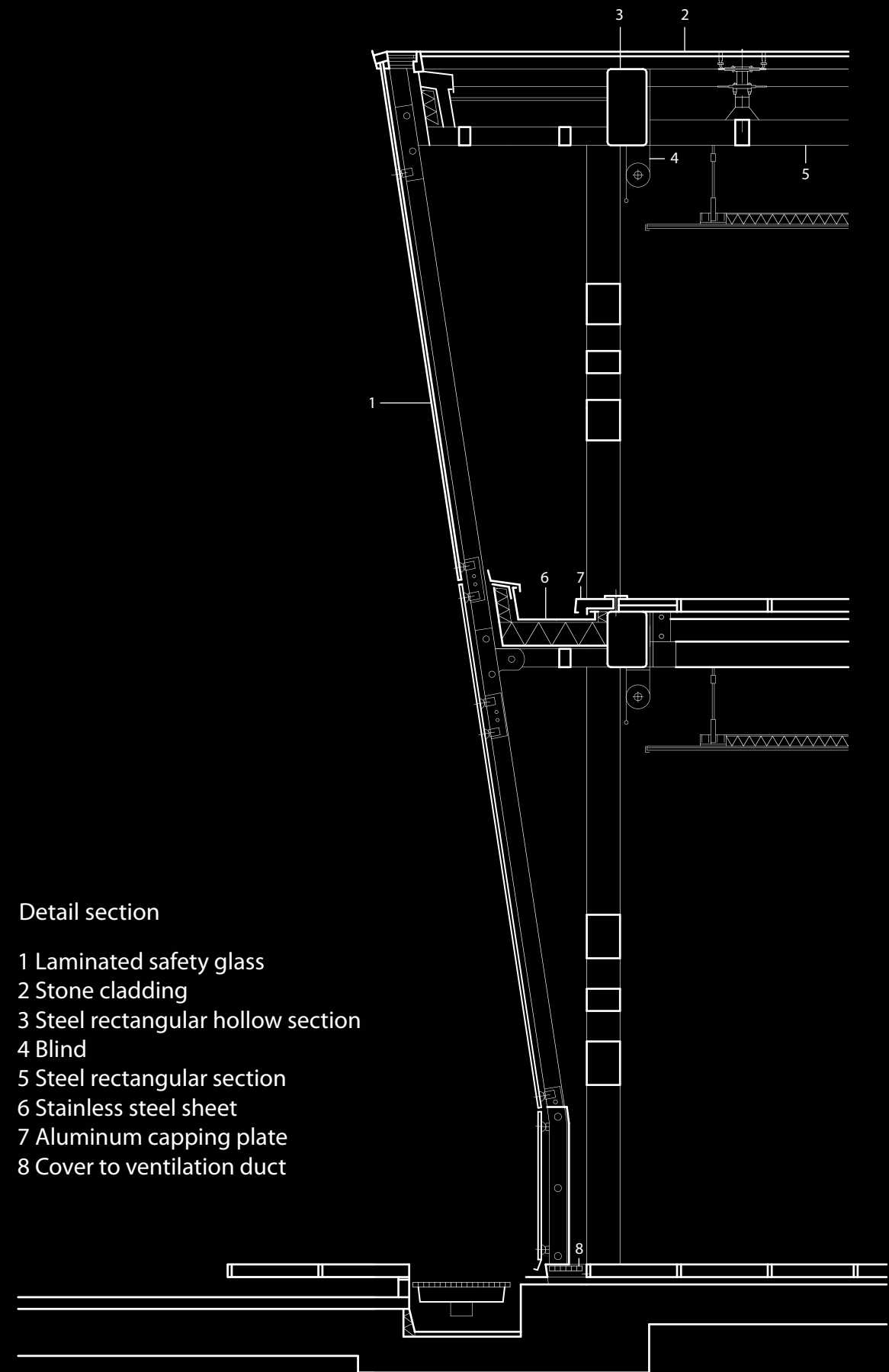






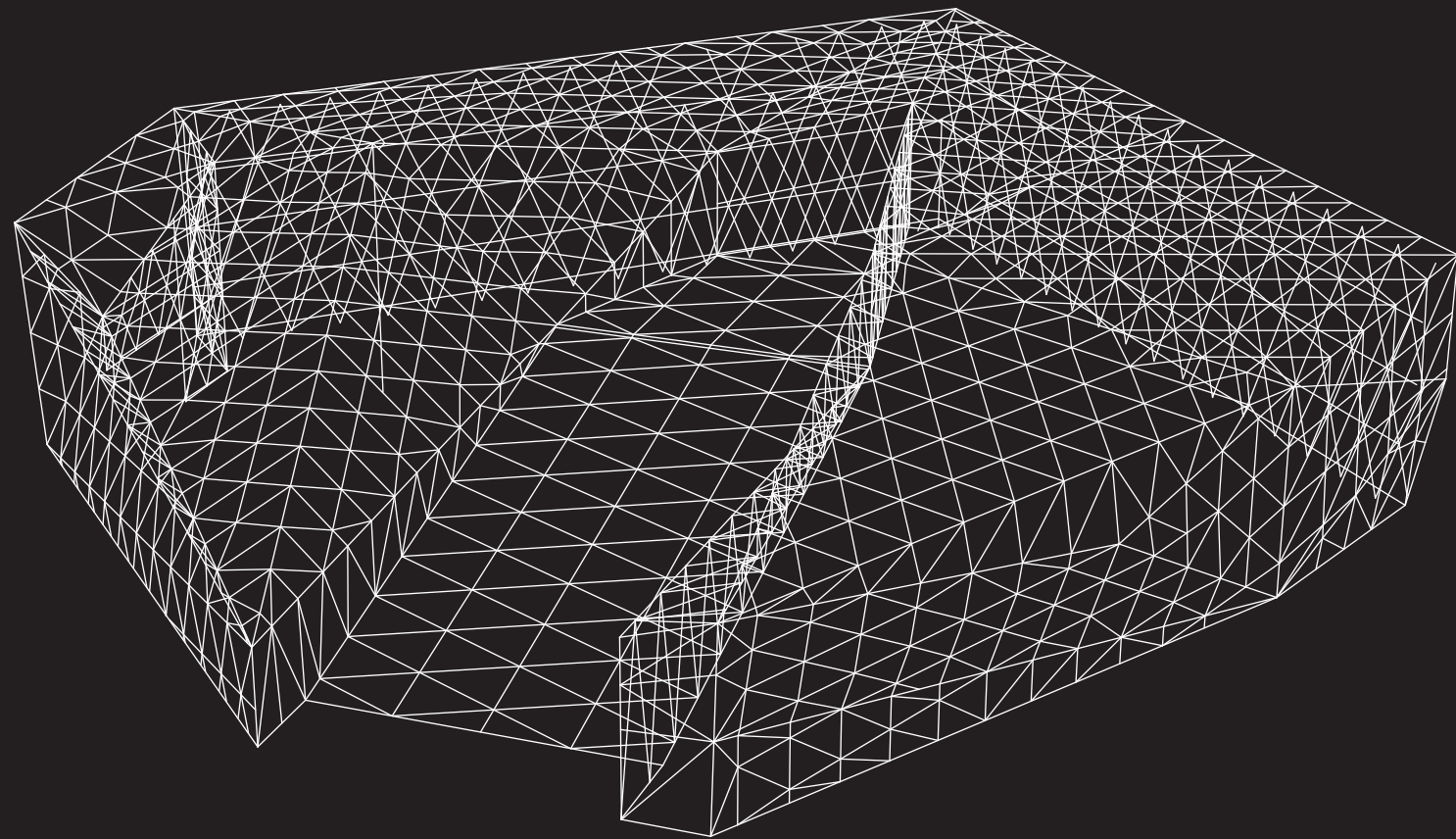


Detail section model

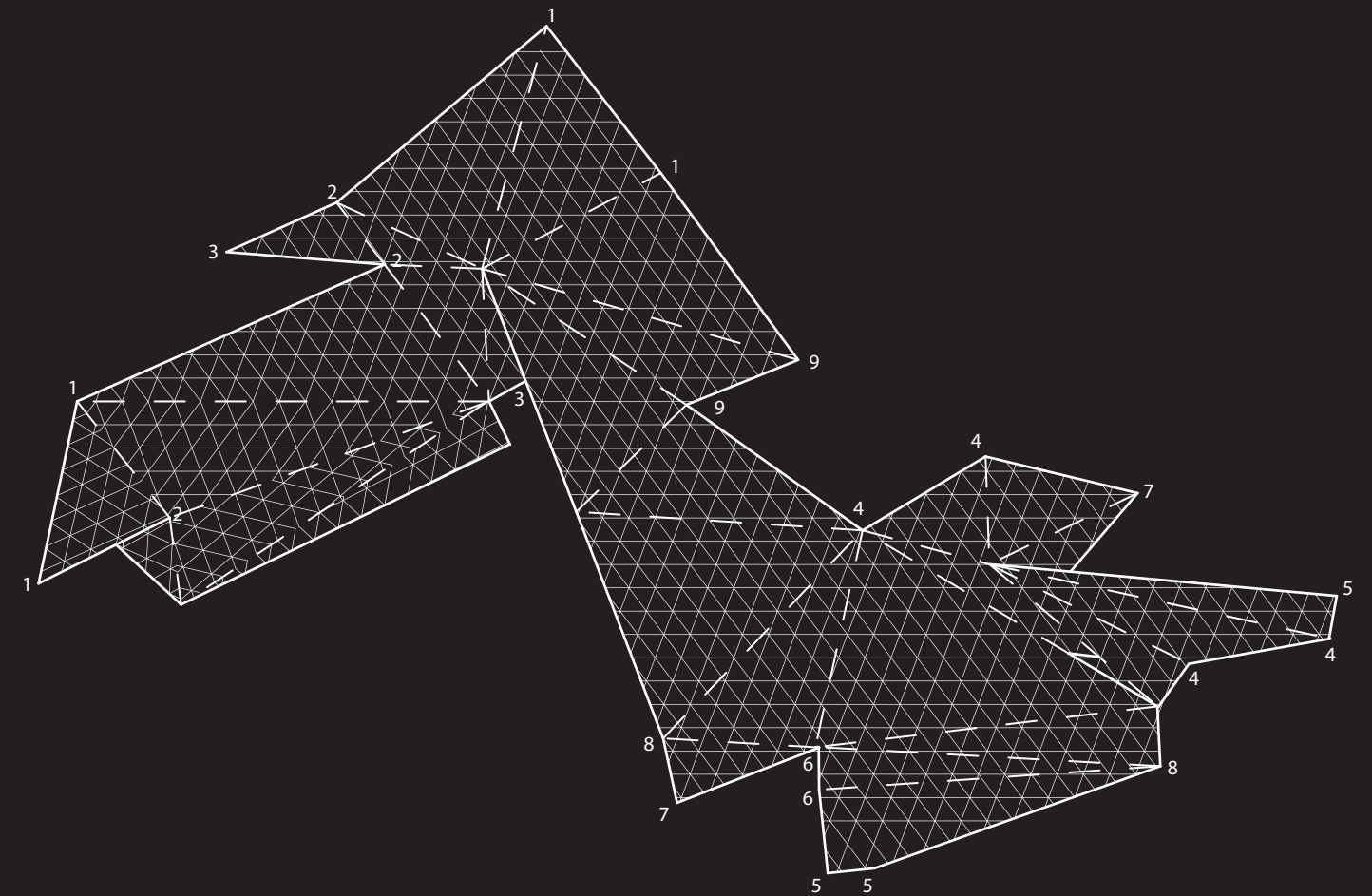


Detail section

- 1 Laminated safety glass
- 2 Stone cladding
- 3 Steel rectangular hollow section
- 4 Blind
- 5 Steel rectangular section
- 6 Stainless steel sheet
- 7 Aluminum capping plate
- 8 Cover to ventilation duct

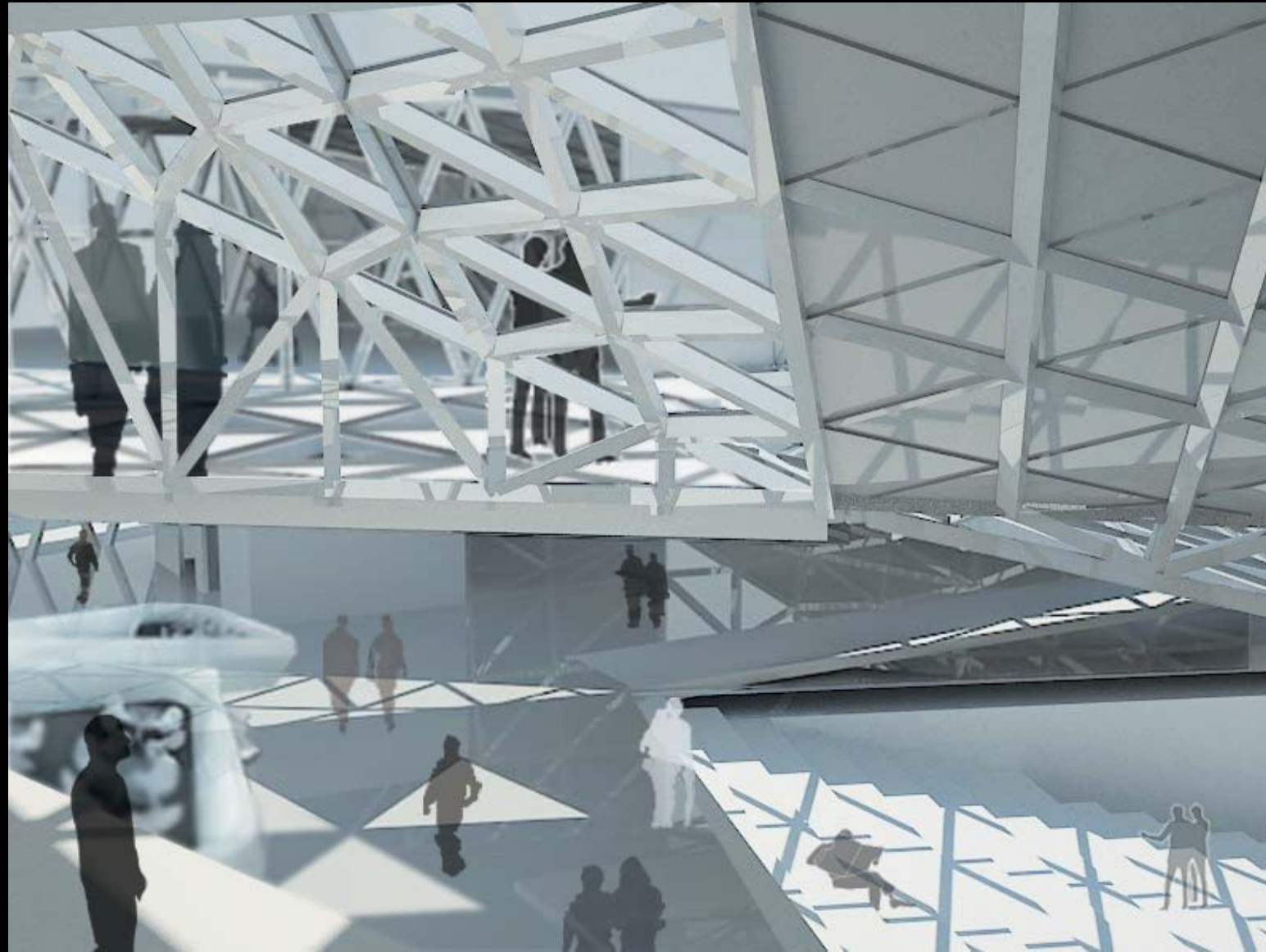


Structure wire model



Unfolded layout of the roof surface





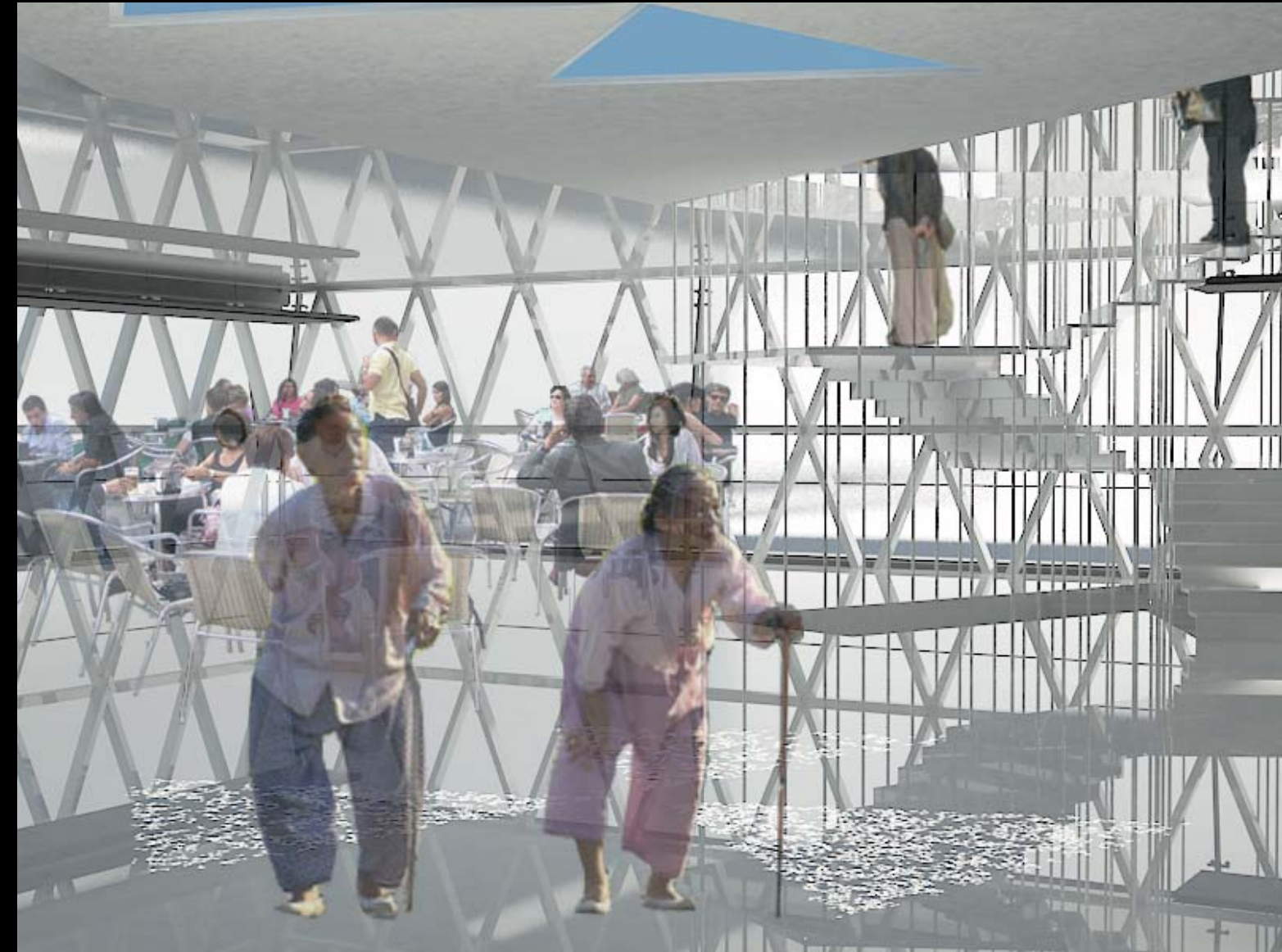
Lobby on the second floor



Lounge on the second floor



Information center



Cafe

# REGENERATION - Senior Day Care Center, Seoul Korea

# Master's Project

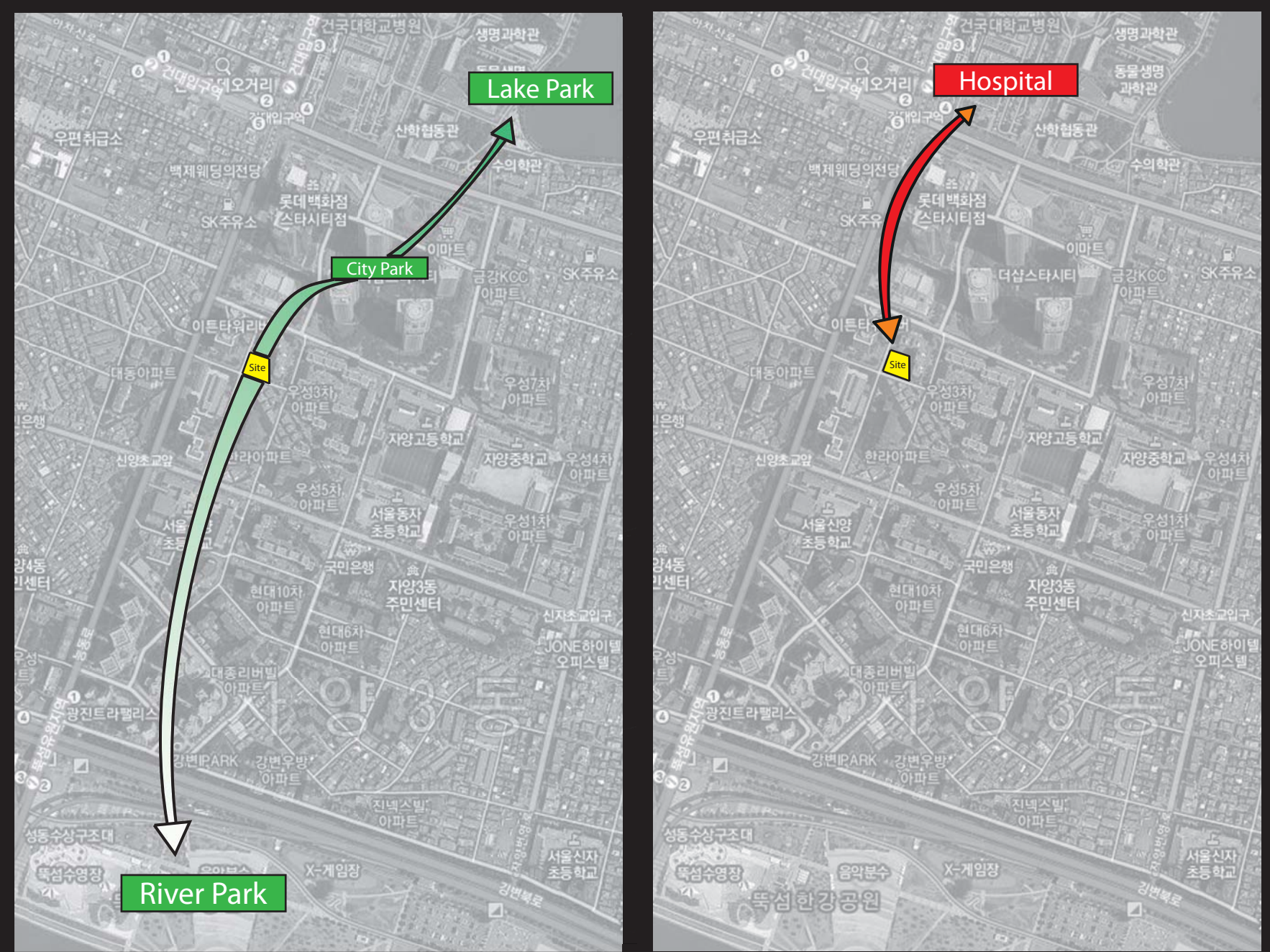
As the dramatic economic development in Korea brought more people to cities, families spread out and people had no local, extended family to fall back upon when they were in need. The result was a growing number of single and widowed people who had no one to take care of them in their old age. However, People have become restless, naive and careless about other people's needs—especially their old relatives and folks. That's when the problems occur.

Therefore, I want to make the senior center to allow the elderly to discover new places and new uses for them, to watch the activities of others between social spaces that can promote interaction among users, and to exercise like care services itself along the dynamic circulations. I also make the massing of the building that act as a landmark to bring the excitement of the welfare center not just to the users but also to passersby for regenerating people and the context as well.



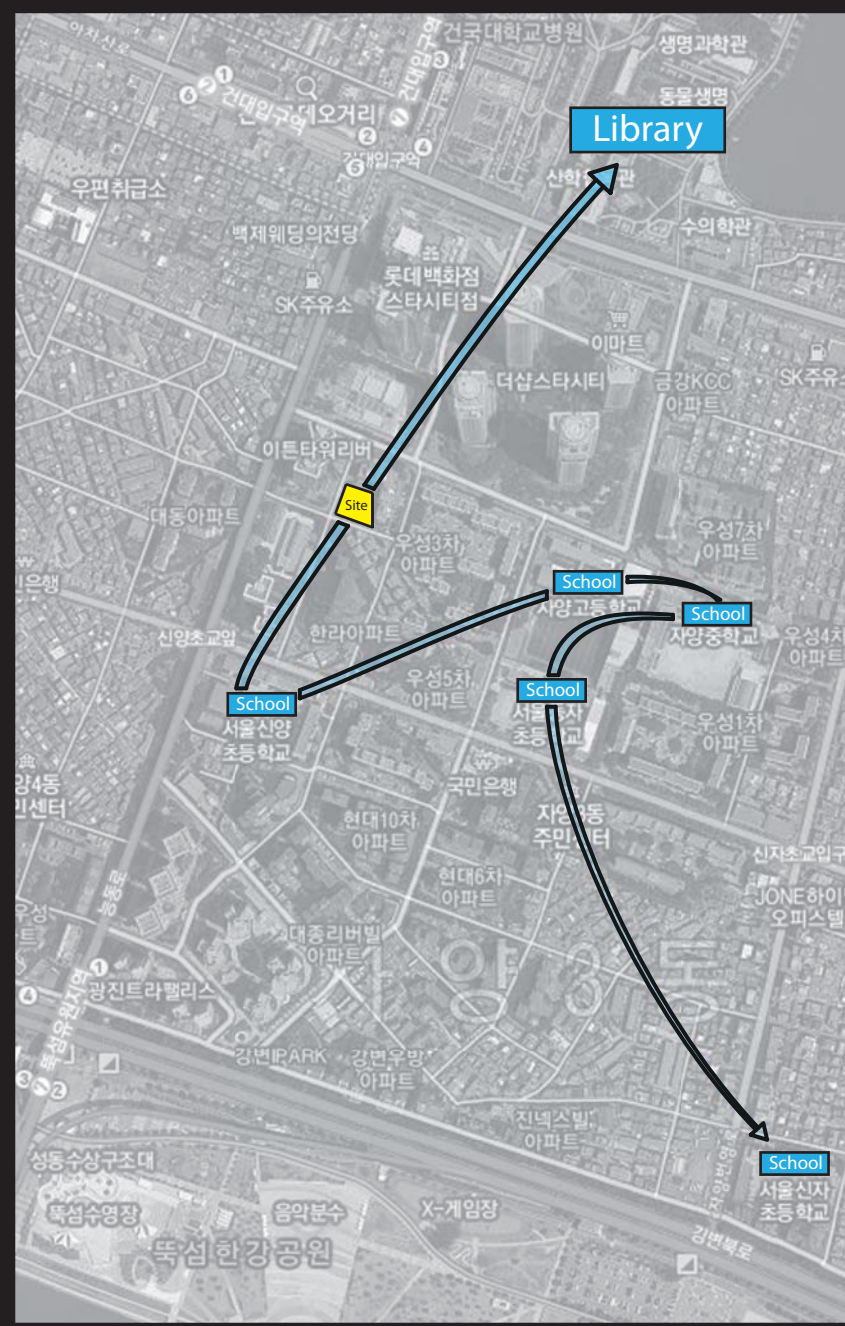
Aerial view

### Site Networks

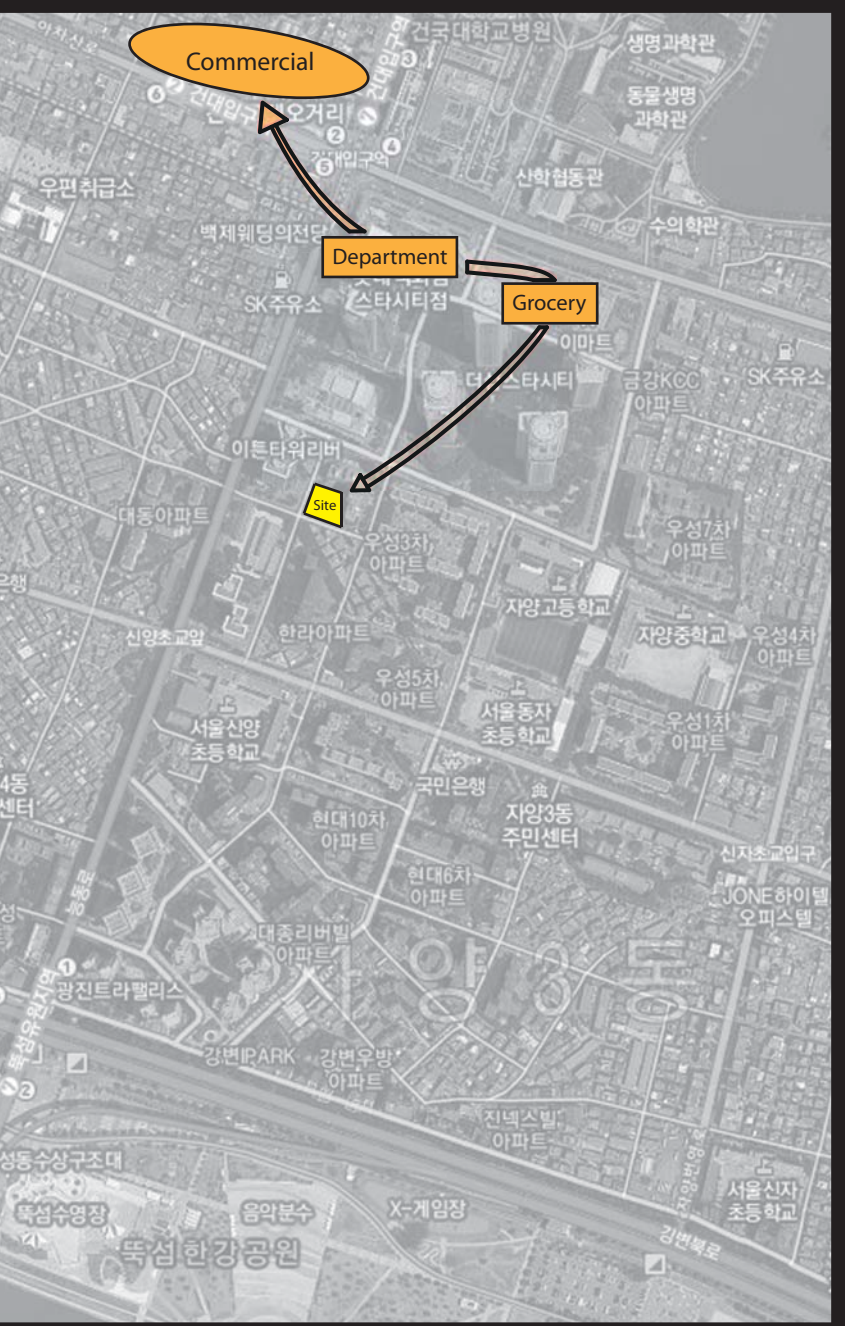


Green Flow

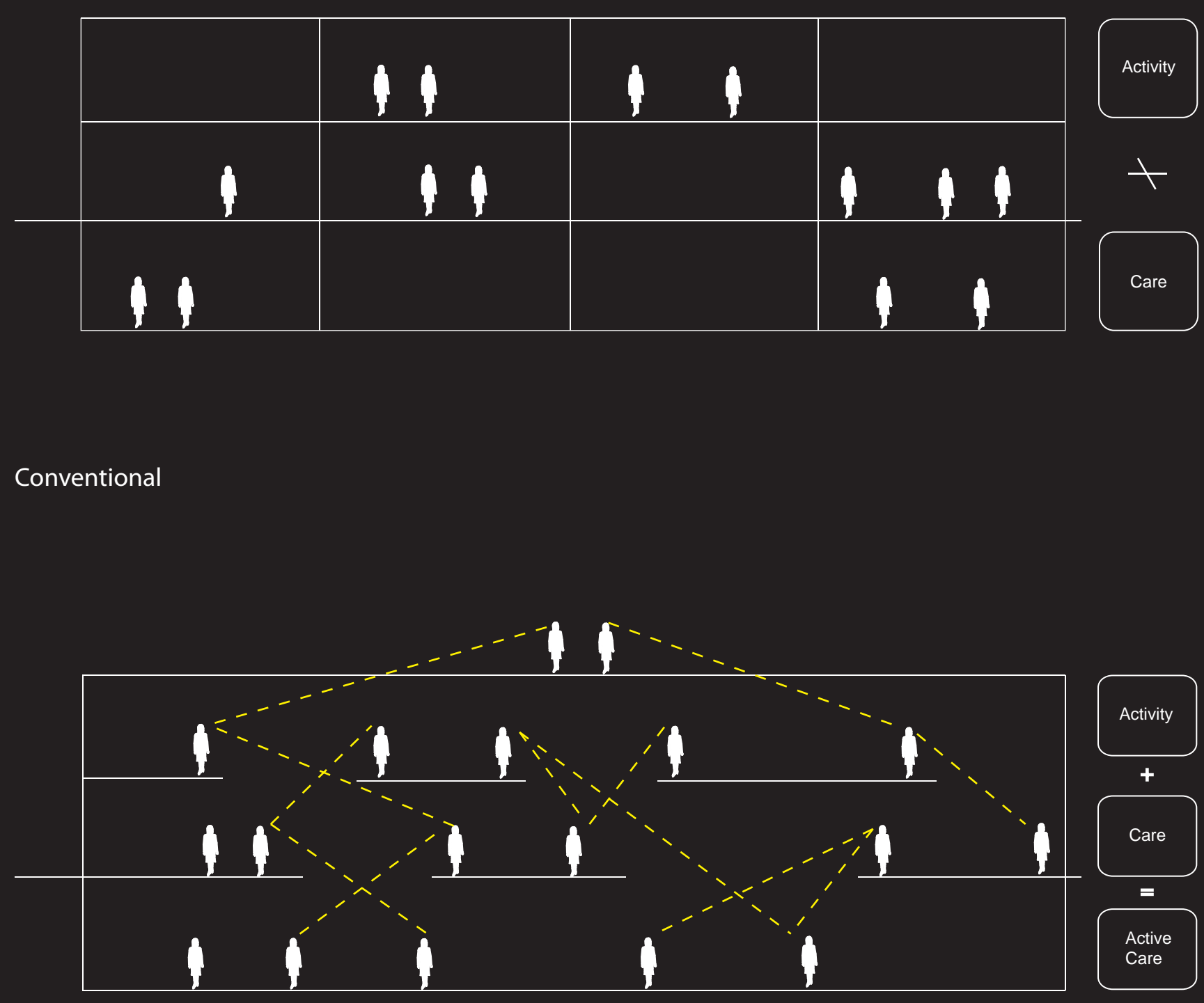
Care-service Flow



Educational Flow

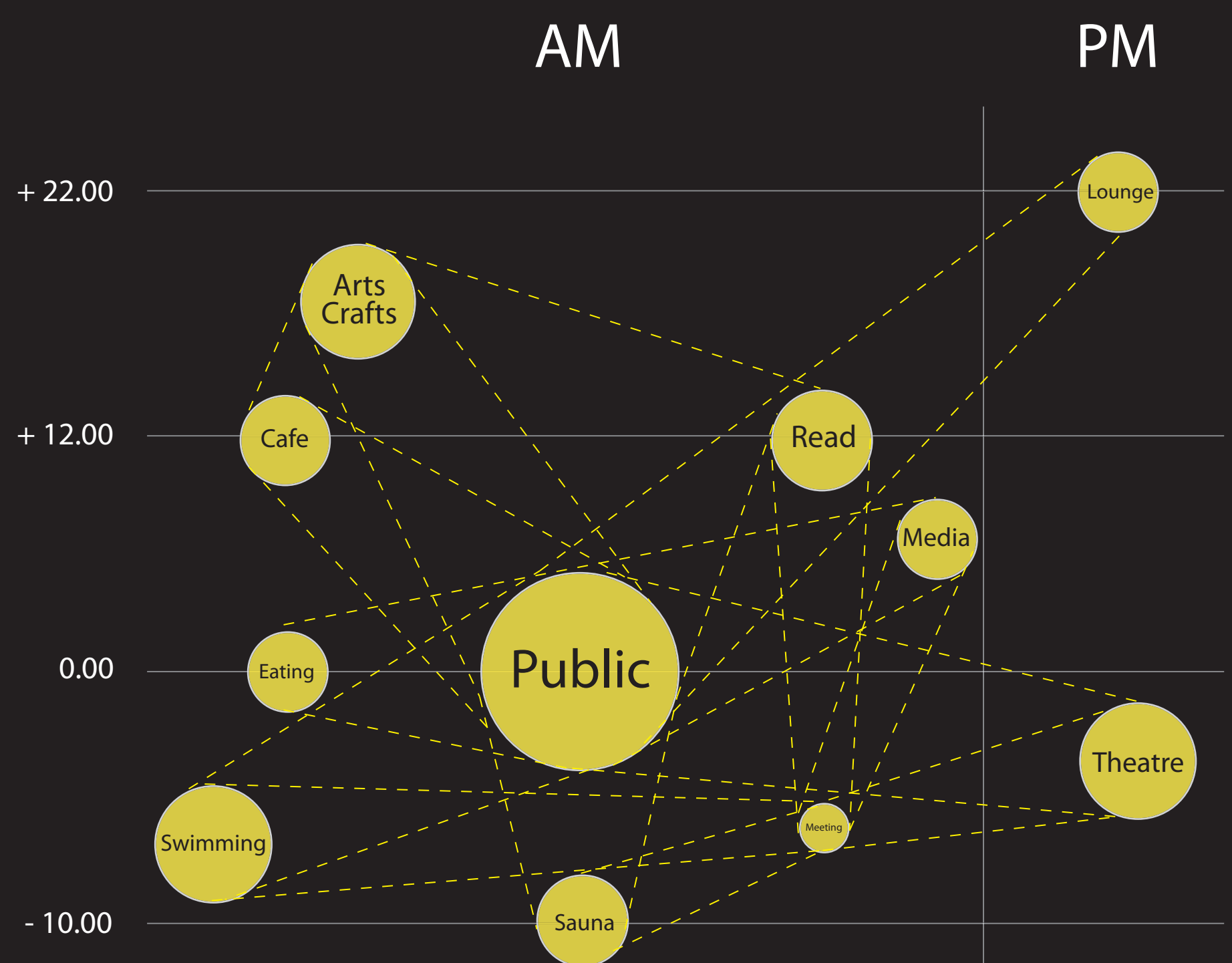


Commercial Flow

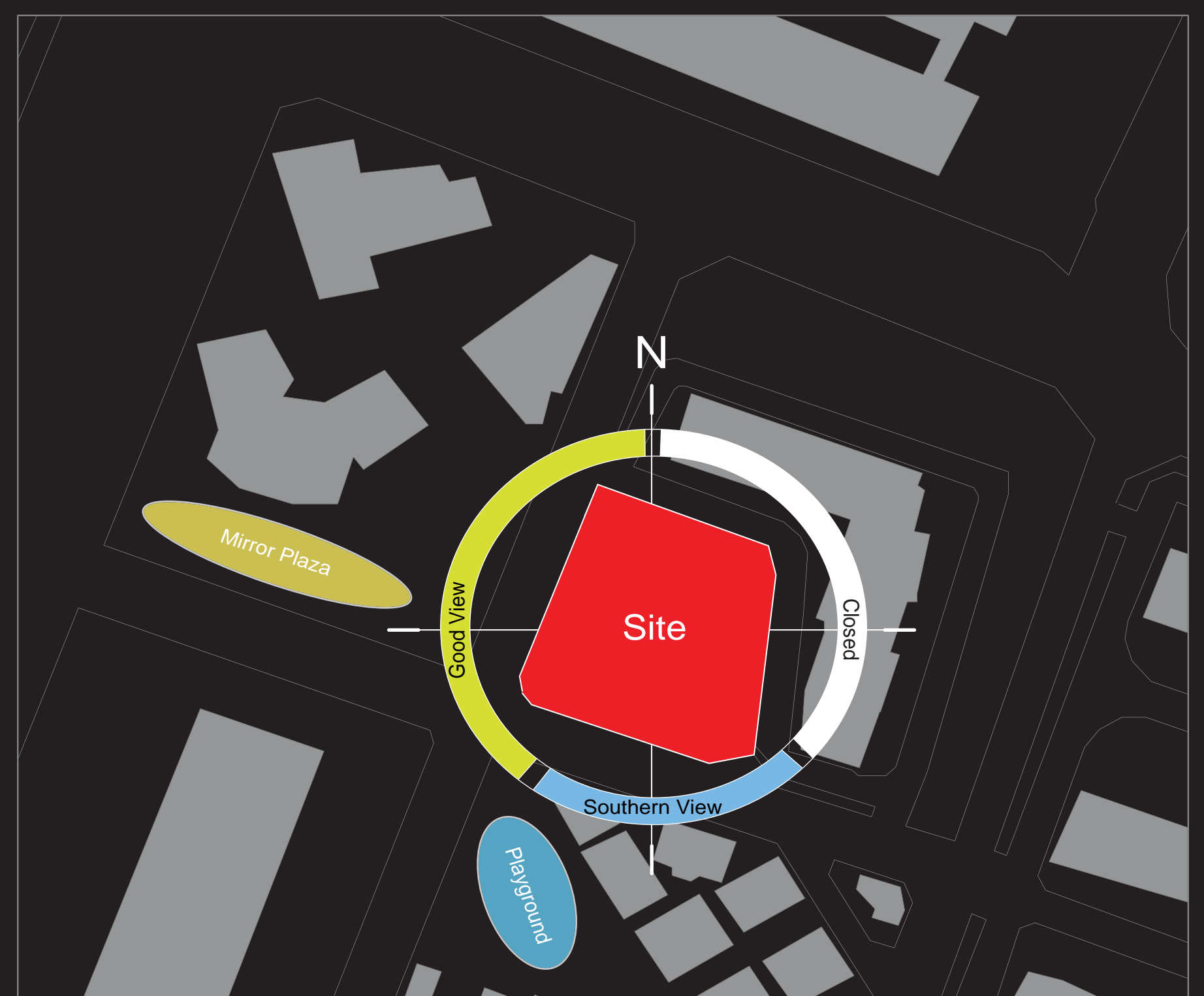


Conventional

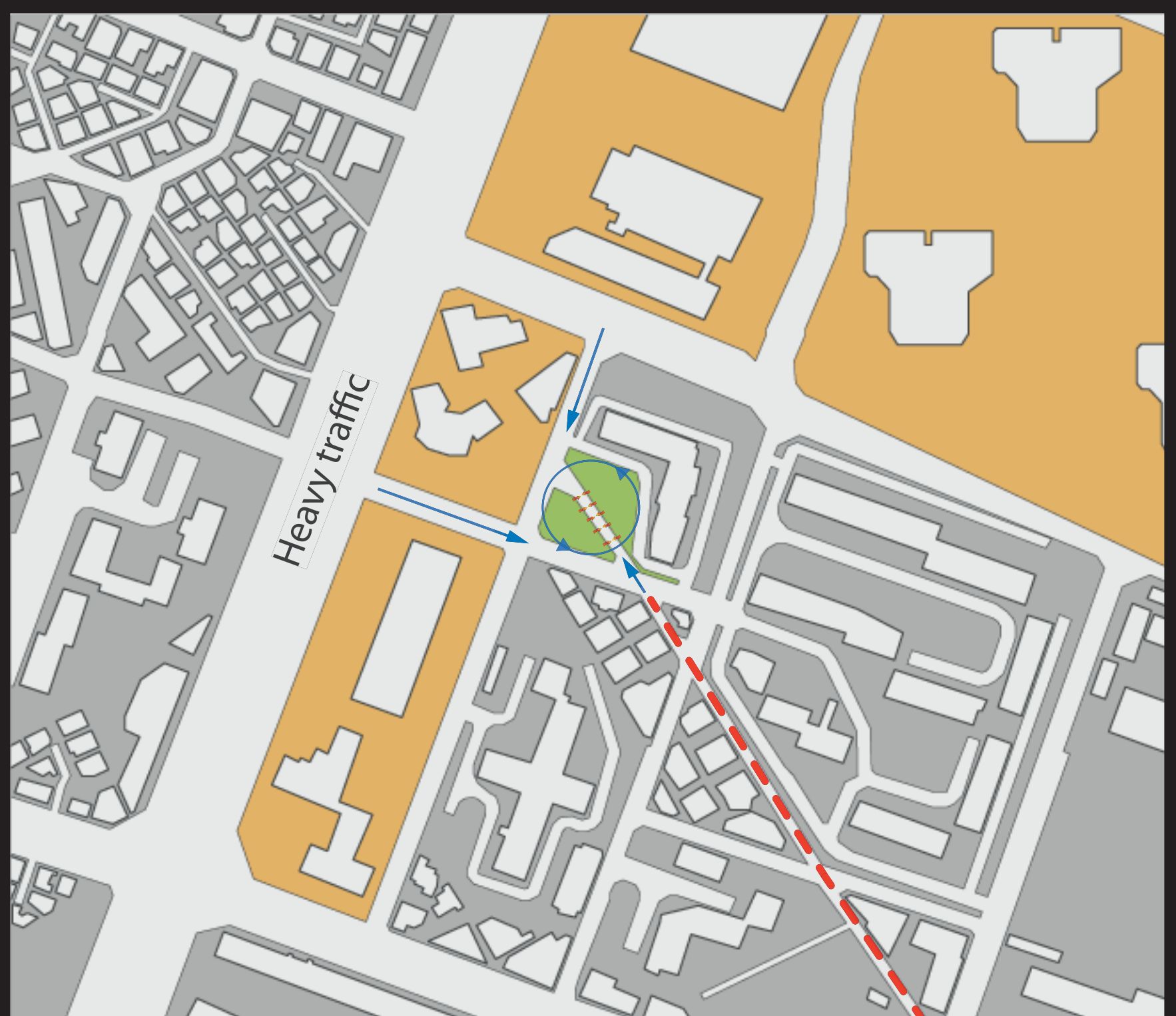
Interactive



Interactive Activity

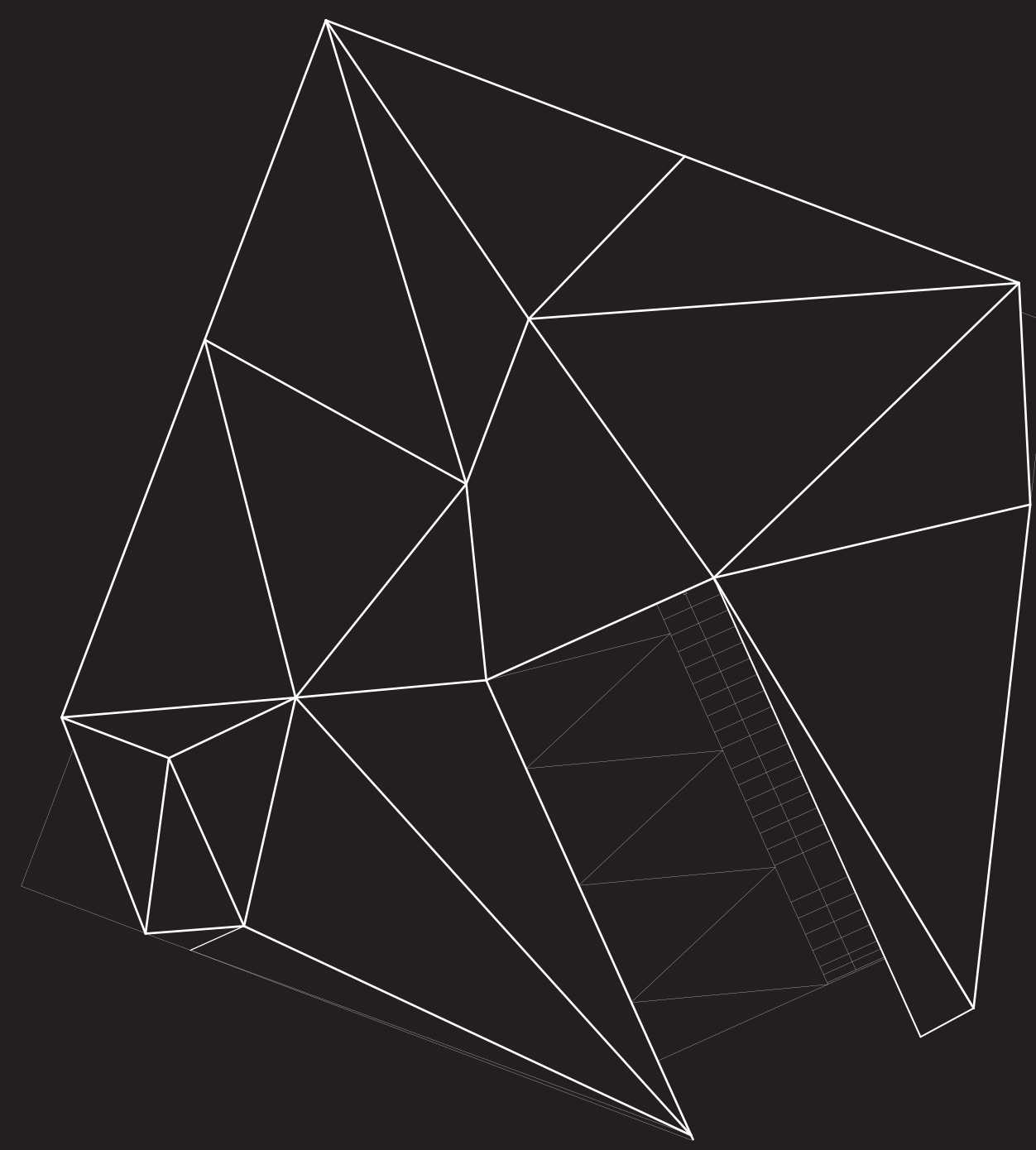


View

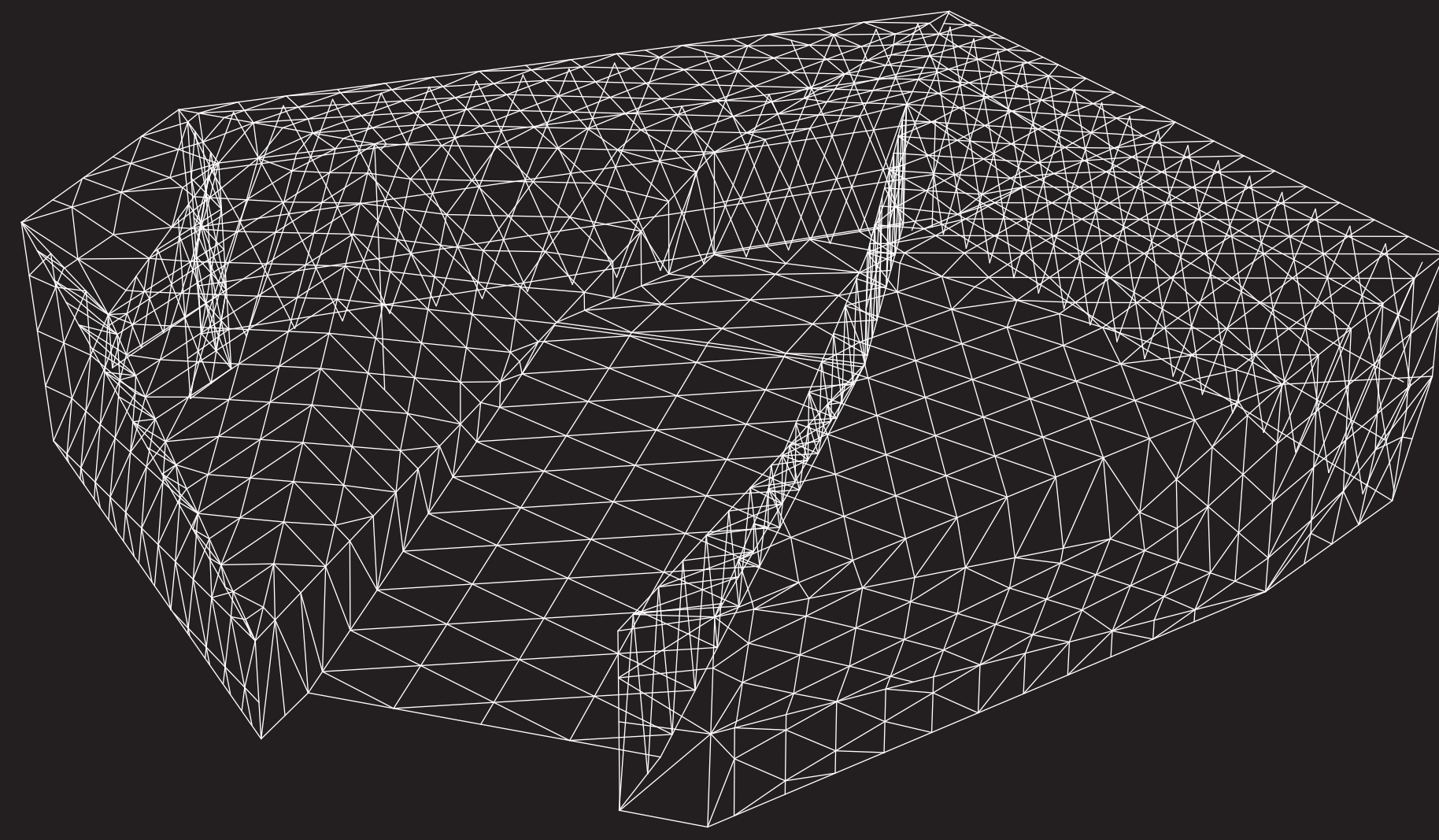


Site strategy

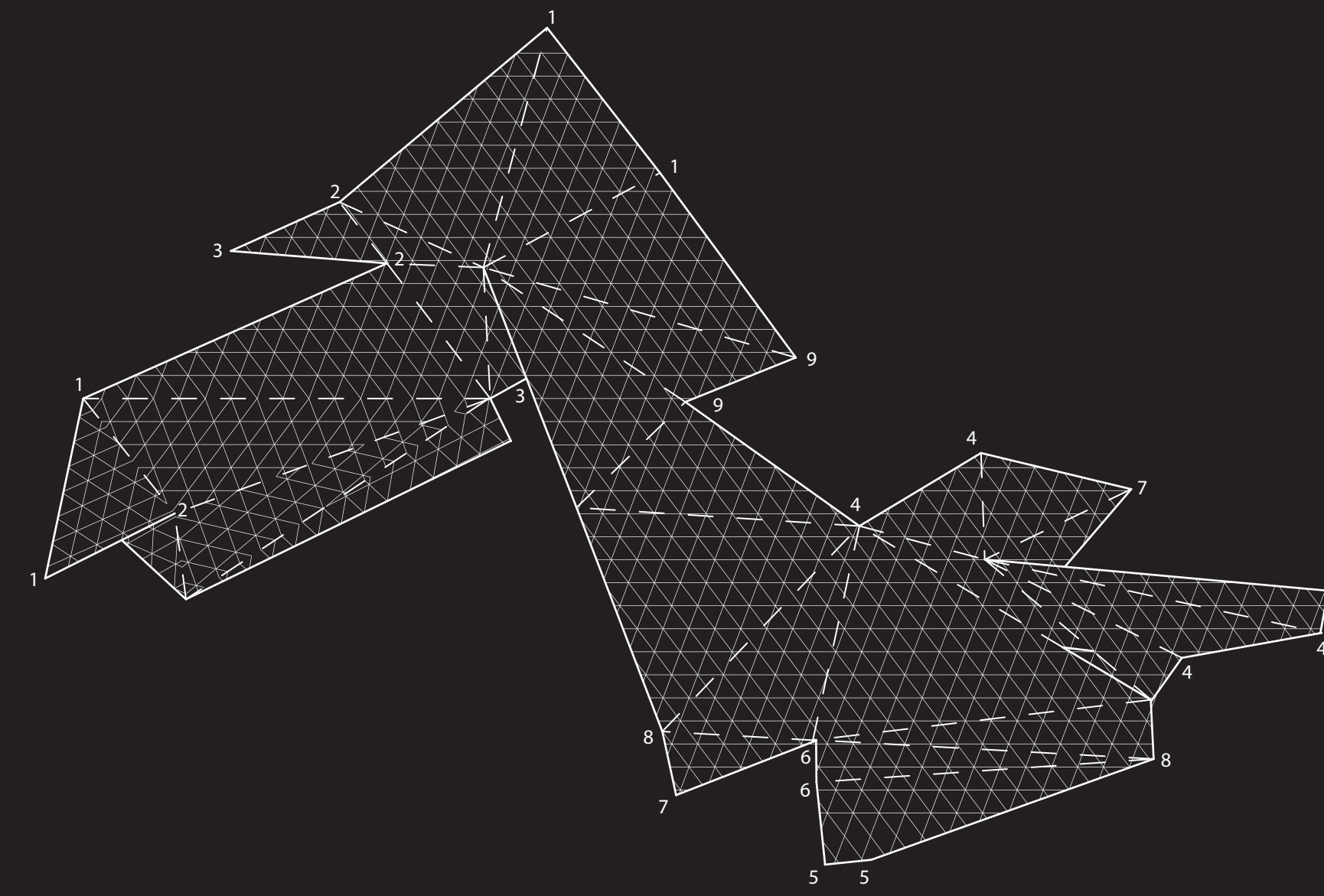
New development Old street Access



Roof plan



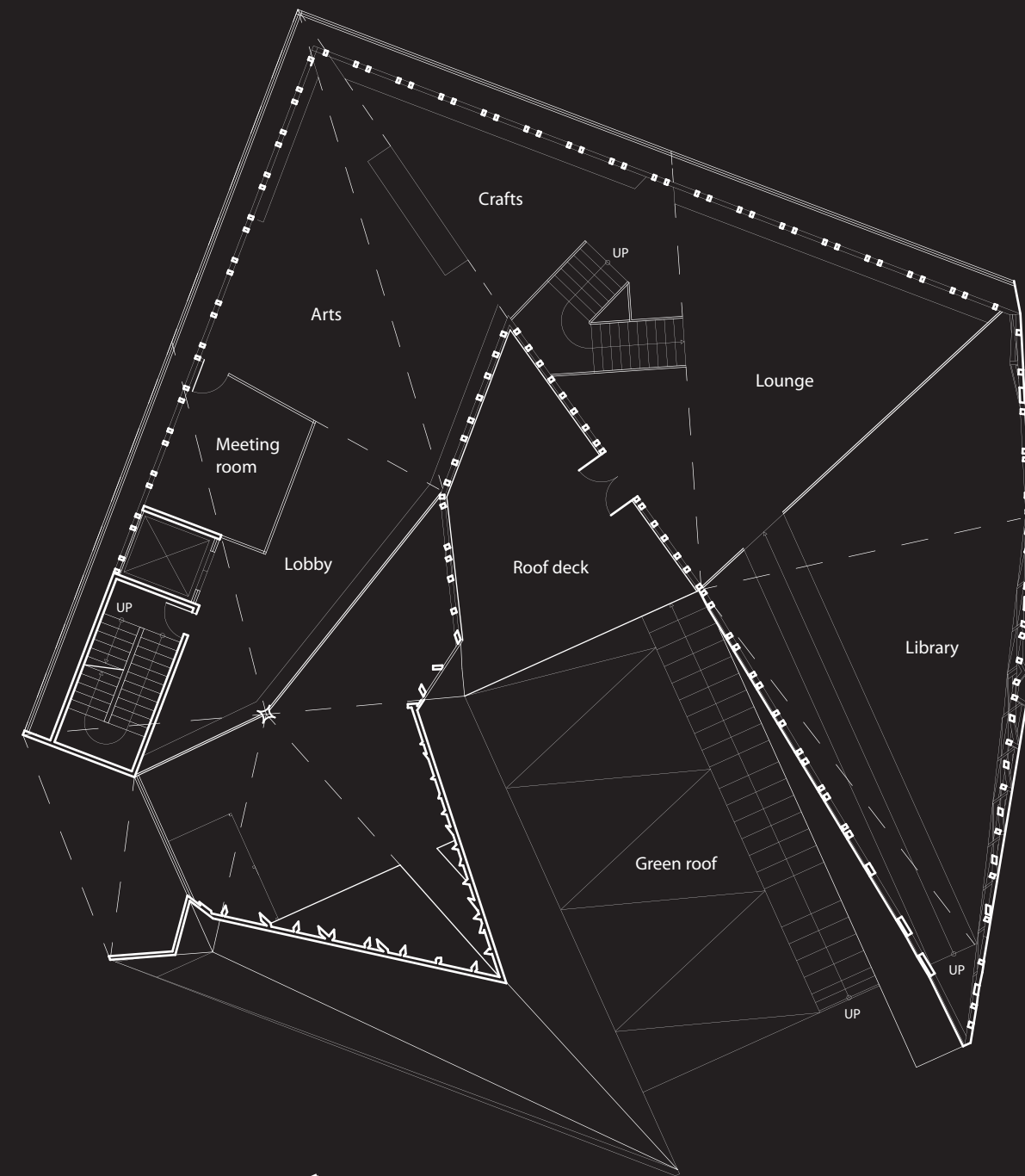
Structure wire model



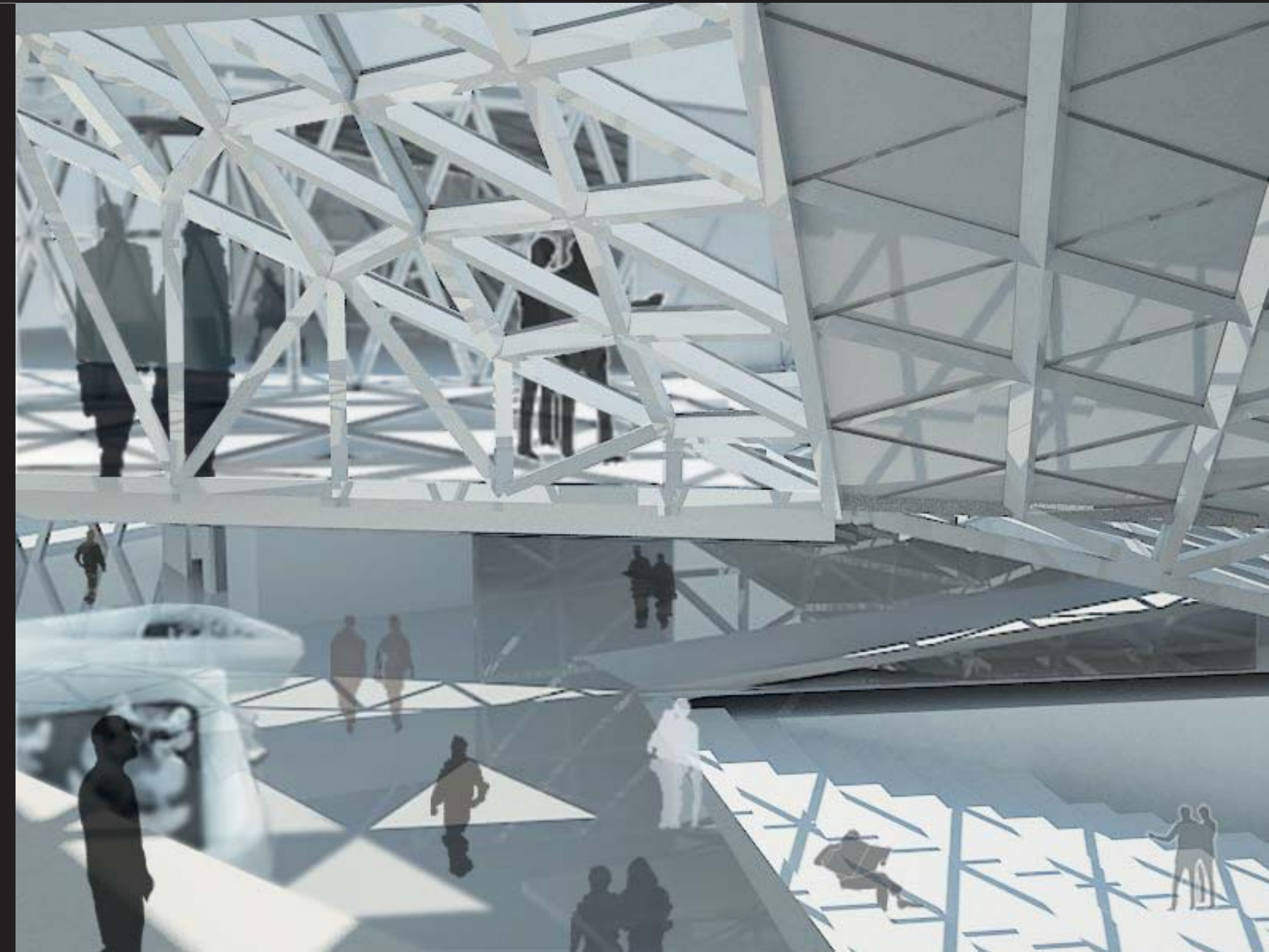
Unfolded layout of the roof surface



Detail section model



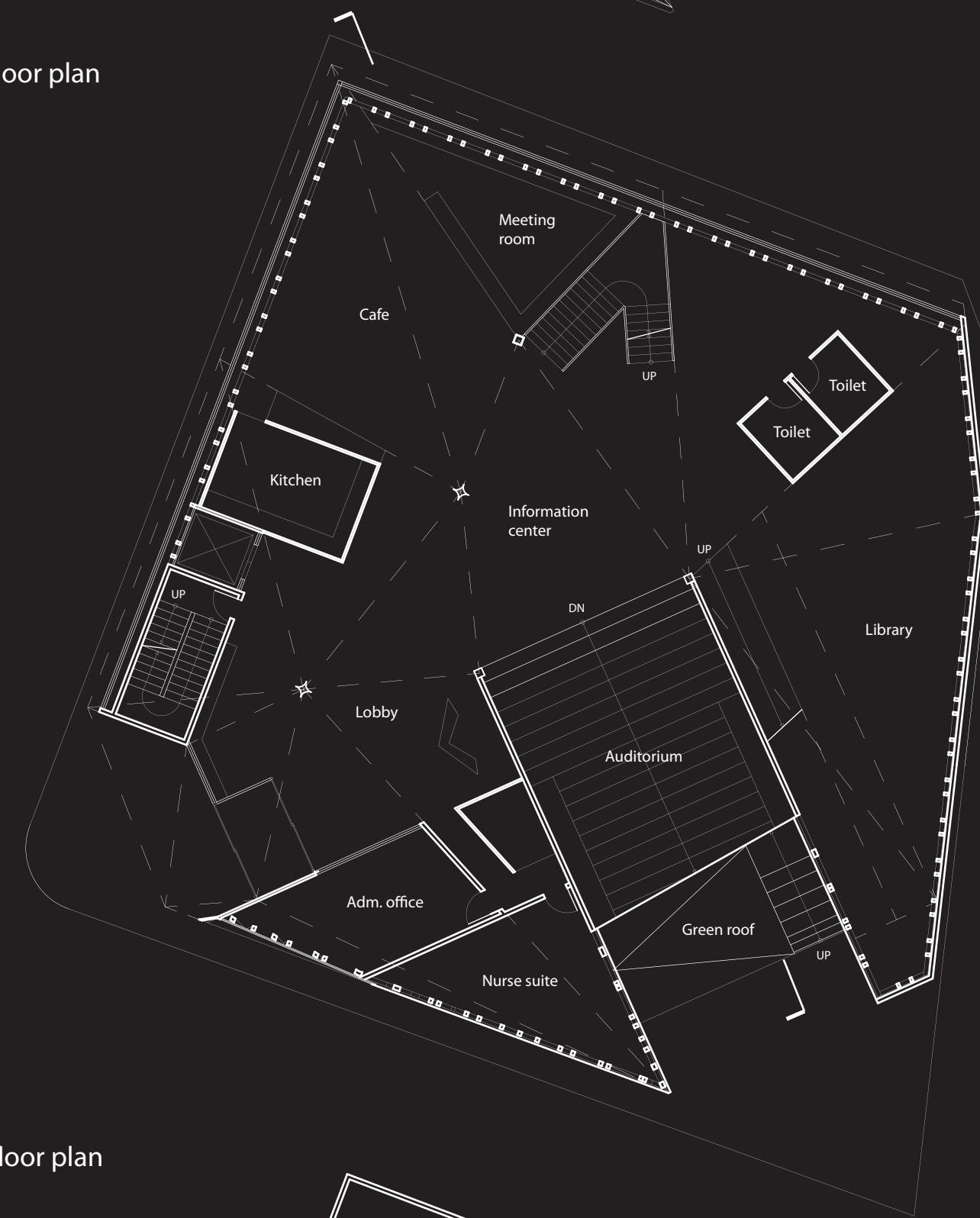
Second floor plan



Lobby on the second floor



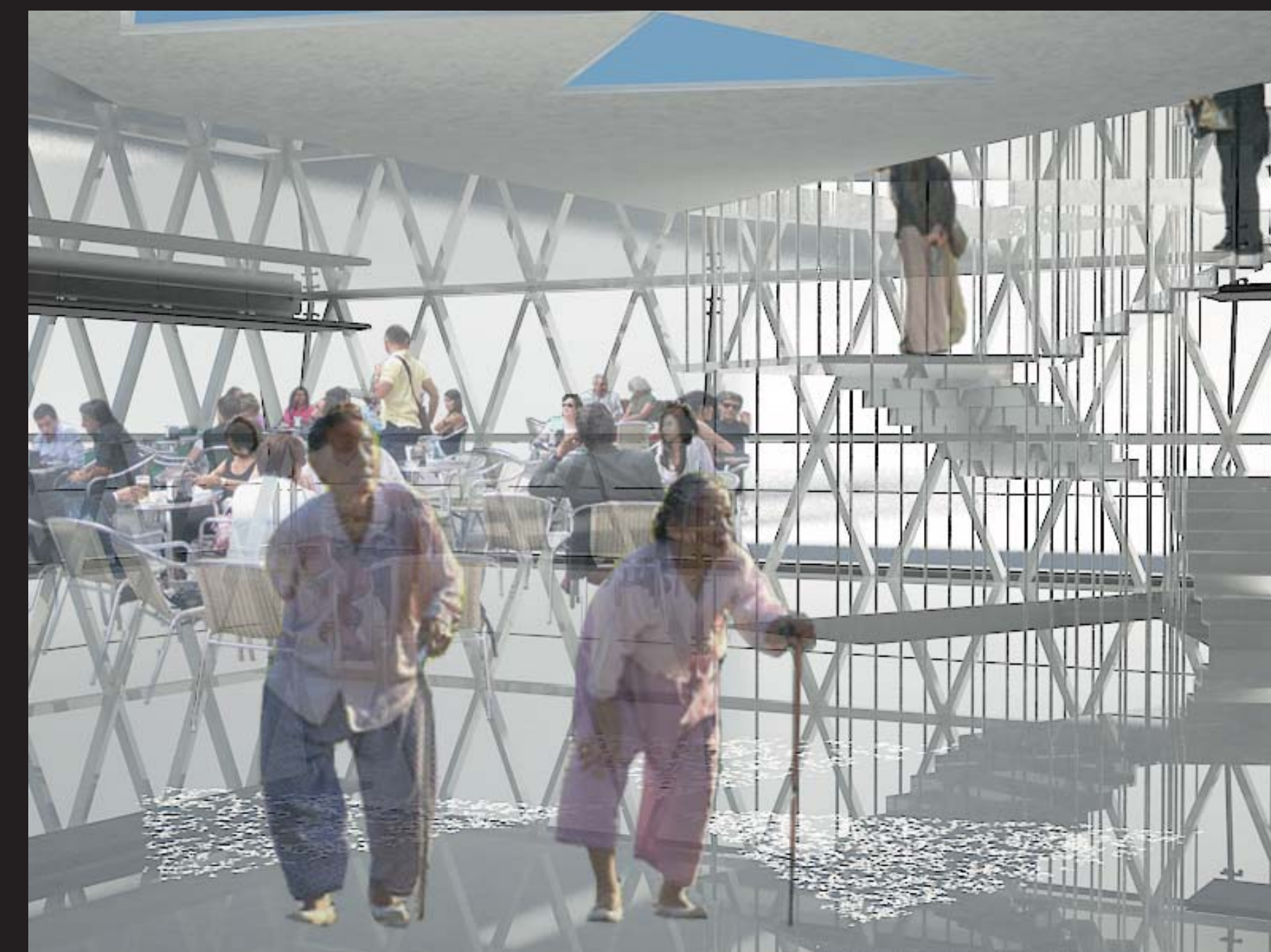
Lounge on the second floor



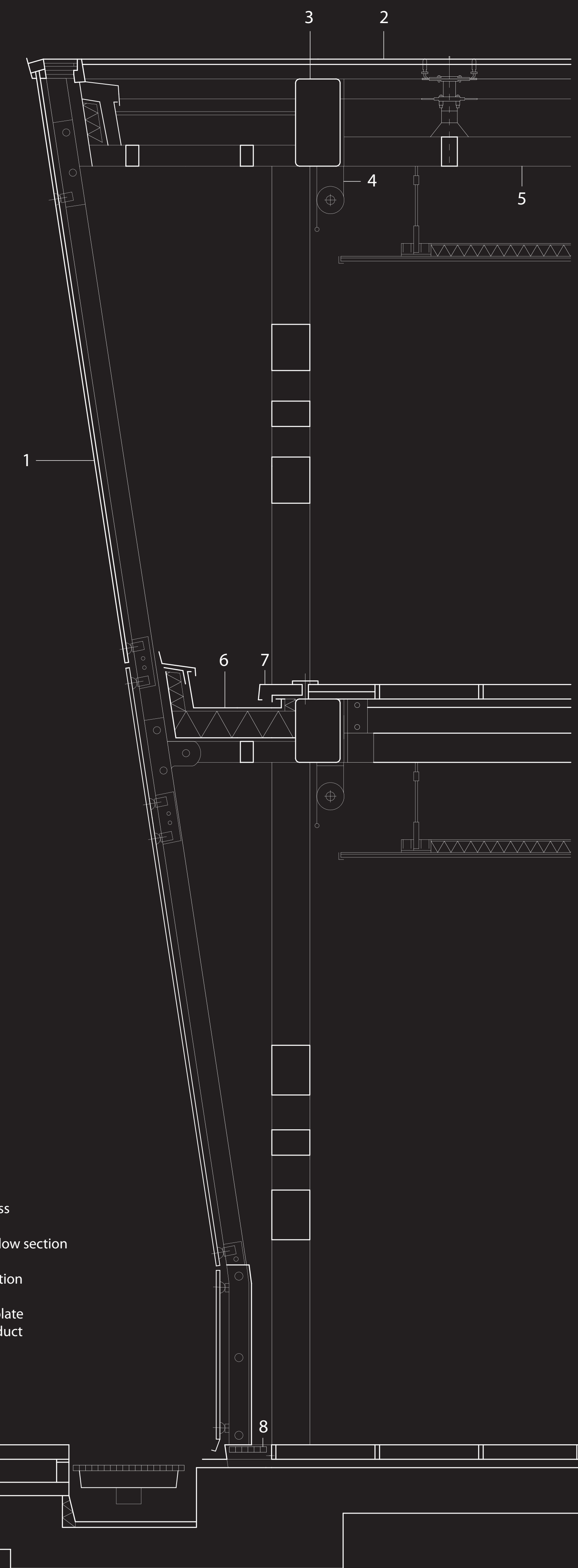
Ground floor plan



Information center



Cafe

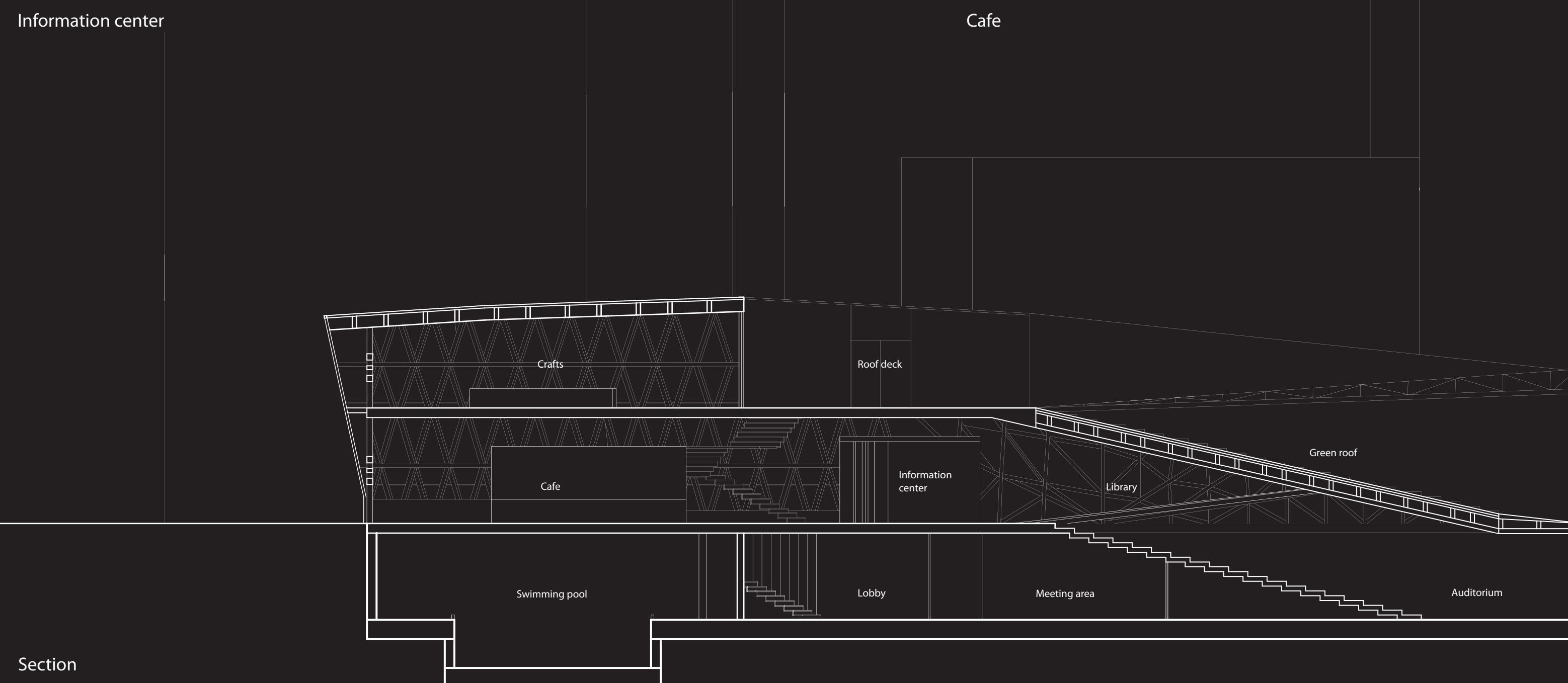


Detail section

- 1 Laminated safety glass
- 2 Stone cladding
- 3 Steel rectangular hollow section
- 4 Blind
- 5 Steel rectangular section
- 6 Stainless steel sheet
- 7 Aluminum capping plate
- 8 Cover to ventilation duct



Basement floor plan



Section

