

## LAKEFRONT

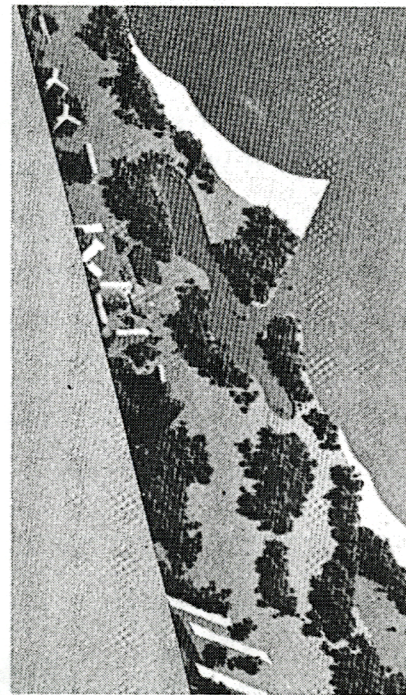


**VIEW OF EARTH BRIDGE NEAR 43rd STREET**

To the people of North Kenwood-Oakland, the lakefront is virtually inaccessible without a car. The steep, narrow stairs and pedestrian bridges are totally useless to the elderly, mothers with shopping carts or strollers, or children on bicycles. A stroll to the Lake in the summer is a struggle with cars, stairways, curbs, and other obstacles.

One way of solving this problem would be to construct earth bridges at a maximum of  $\frac{1}{2}$  mile spacing over the Illinois Central tracks and Lake Shore Drive. The east side of the bridge could be an open colonnade, so that people driving on Lake Shore Drive could still see the Lake. The bridges should be a minimum of 400 feet wide, or more where a school, community facilities, or shopping is included. The walkway should be graded so that the slope is hardly noticeable. Since the Illinois Central is depressed through North Kenwood-Oakland, very little incline is necessary.

If an increase in lakefront park is desired, landfill peninsulas could be built. These would have the advantage of increasing the beach area



**LANDFILL PENINSULAS**



**EARTH BRIDGES AT 35th ST.  
AND 43rd ST. WITH  
COMMUNITY FACILITIES**

and providing protected harbors. They would, however, move the shoreline farther away from the residential community, and would require extensive earth moving.

In the opinion of several lawyers who have been consulted, the City has complete veto power over any construction over the air rights south of 29th street. This would put them in a good position to acquire rights for public use all along the lakefront, at a time when the land is not in as high demand as it will be in the future. In the long range, the Illinois Central could become a subway with residential and other uses above. The regular stops could be in the lower level of a community shopping center. This could be the focus of the community, with the transit stop conveniently located indoors, at the center of activity. Federal grants for open space and for transportation could be drawn upon for the long range plans. A very simple beginning could be made by constructing a few earth bridges immediately.