

## ALTERNATIVE 1

### ALL LOW RISE

POPULATION: 25,000

GROUND COVERAGE:

Residential (including yards).....208 acres

Streets and Alleys.....128 acres

Public and Commercial..... 80 acres

Rehabilitation and conservation. Clearance of most deteriorated buildings only. Construction of new houses, rowhouses, and walk-up apartments for present residents of North Kenwood-Oakland.

## PRESENT CONDITIONS

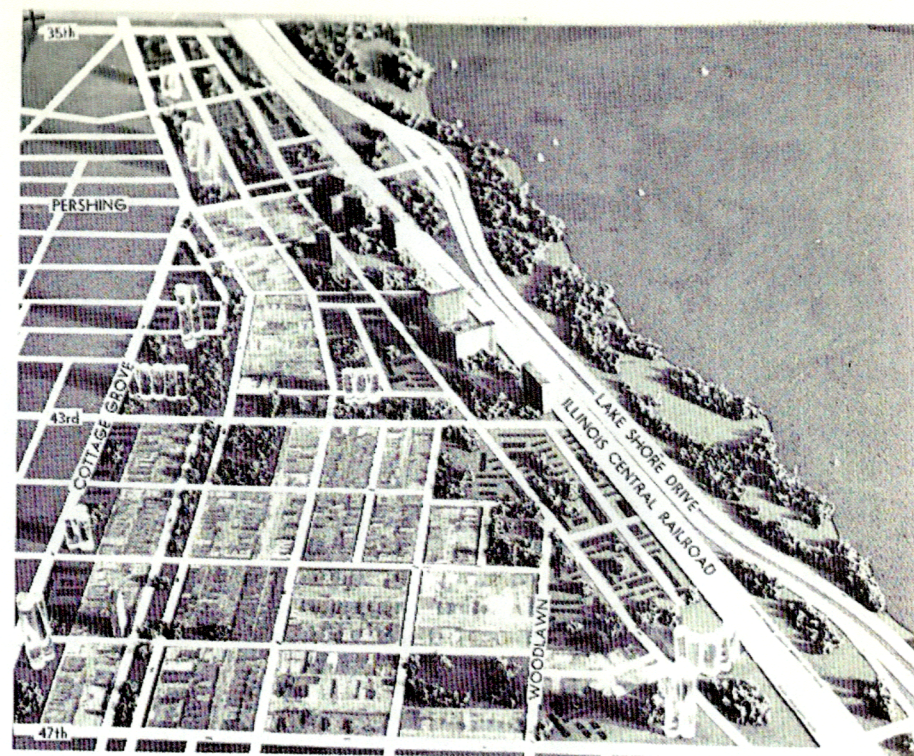
POPULATION: 42,012

GROUND COVERAGE:

Residential (including yards).....248 acres

Streets and Alleys.....128 acres

Public and Commercial (including 1.4 acres of park).. 40 acres



## ALTERNATIVE 2

### LOW RISE WITH SOME HIGH RISE

POPULATION: 42,000

GROUND COVERAGE:

Residential (including yards).....153 acres

Streets and Alleys.....128 acres

Public and Commercial.....135 acres

Rehabilitation and conservation. Clearance of most deteriorated buildings only. Construction of varied housing types for present residents of North Kenwood-Oakland.

AREA: 416 acres

BOUNDARIES: 35th Street, Illinois Central tracks, 47th Street, Cottage Grove Avenue.