

Link-Belt speaker at SAM meet

Highlights in the development of the Link-Belt company's production control system will be described here Tuesday. Ralph Kresge, methods supervisor at Link-Belt's Pershing road plant, will talk on this topic, placing emphasis on the role played by engineering personnel in production control work.

Sponsored by the Society for Advancement of Management, Mr. Kresge's appearance is scheduled for 1 p.m. Tuesday in 101MC.

Link-Belt is a well-known manufacturer of materials handling equipment and heavy machinery. "Many undergraduates hope ultimately to obtain employment in Link-Belt's Chicago plants," Walter Kohler, SAM veep, suggested, "and it is certain that Tuesday's opportunity to learn more about the company will be welcomed."

Renowned artist named professor on Design staff

Hans Schlegel, 51, internationally known artist and designer, has been named visiting associate professor in the Institute of Design, Serge Chermayeff, director of the Institute of Design announced.

A fellow of the Society of Industrial Artists, Schlegel has had wide experience as an independent designer, art director, and consultant for several English firms since the completion of his education in his native Germany.

tech timetable

Items appearing in Tech Timetable are those which have been scheduled with the Dean of Students' office.

FRIDAY, APRIL 21

Dean's Kaffeeklatsch, 4 p.m., Exec. conf. room
IVCF, 5 p.m., AH conf. room
Pi Tau Sigma, 5 p.m., 101MC

SATURDAY, APRIL 22

McKinley House play, 8 p.m., NU aud.
Navy dance, 8 p.m., AH

MONDAY, APRIL 24

AIIEE, 12 noon, NU aud.
TFU, 4 p.m., Exec. conf. room
Alpha Lambda Pi, 5 p.m., AH conf. room
Delta Lambda Xi, 5 p.m., NU aud.
Armour Eye, 7 p.m., NU lounge

TUESDAY, APRIL 25

AIIEE, 1 p.m., NU aud.
Lost Credits, 1 p.m., 103MC
SAM, 1 p.m., 101MC
Sigma Pi Sigma, 1 p.m., 208P
LSA, 5 p.m., Exec. conf. room
Rough Castings, 5 p.m., 101MC
Student Admissions Advisory board, 5 p.m., AH conf. room
Sigma Kappa, 5:30 p.m., NU lounge
AIIEE, 8 p.m., 131MC

WEDNESDAY, APRIL 26

Foreign Students association, 1 p.m., Exec. conf. room
Yacht club, 1 p.m., 302MC
APO, 5 p.m., East dining room
Newman club, 5 p.m., 302M
Junior Week fashions, 5:30 p.m., Exec. conf. room

THURSDAY, APRIL 27

ACS, 1 p.m., 115CB
IAS, 1 p.m., 108C
Placement meeting—Jan. '51 class, 1 p.m., NU aud.
Radio club, 1 p.m., 101MC
Record concert, 1 p.m., 131MC
Sigma Kappa, 5:30 p.m., NU lounge

FRIDAY, APRIL 28

Campus Players, 3 p.m., NU aud.
Dean's Kaffeeklatsch, 4 p.m., Exec. conf. room
IVCF, 5 p.m., AH conf. room
Alpha Lambda Pi, 7 p.m., 302M

FISHBAUGH'S BRAKE SERVICE

2721 S. Wabash Ave.
VI 2-1193

25 years in this location
DISCOUNT TO STUDENTS
AND FACULTY

Ask For Jim



HOLDING THAT POSE is Jerry Meyden who will smile for Armour Eye photos at Studio Night Monday at 7:30 p.m. in NSU lounge. She is one of two models to be present.

J. Paul Sheedy* Switched to Wildroot Cream-Oil Because He Flunked The Finger Nail Test



ALL panda-monium just broke loose for this little guy with the hairy ears and two black eyes. Somebody snatched his Wildroot Cream-Oil! You may not be a panda—but why not see what Wildroot Cream-Oil *canda*? Just a little bit grooms your hair neatly and naturally without that plastered-down look. Relieves annoying dryness and removes loose, ugly dandruff. And Wildroot Cream-Oil helps you pass the Fingernail Test! It's non-alcoholic . . . contains soothing Lanolin. Get a tube or bottle of Wildroot Cream-Oil hair tonic at any drug or toilet goods counter today. And always ask your barber for a professional application. In case there's a panda in your house—keep some Wildroot Cream-Oil *handa* for him!

* of 327 Burroughs Drive, Snyder, N. Y.

Wildroot Company, Inc., Buffalo 11, N. Y.



Any way, and every way, you measure it —FIRST...and Finest...at Lowest Cost!

Measure size, and you'll find Chevrolet's the longest, heaviest car in its field—*bar none*. Measure *styling and beauty*, and you'll find it's the only car in its field with the world-famous Body by Fisher. Measure *driving ease*, and you'll find that only Chevrolet offers you your choice of the finest *no-shift* driving or the finest *standard* driving—at lowest cost. Measure *performance, riding-comfort and safety*, and you'll find it's the only low-priced car combining the extra-efficient Valve-in-Head Engine, the extra-smooth Knee-Action Gliding Ride, and extra-dependable Certi-Safe Hydraulic Brakes!

And remember—Chevrolet alone provides all these and many other fine-car advantages at the *lowest prices* and with such low operating and upkeep costs.

Come in! See Chevrolet for 1950. And we know you'll agree that, any way and every way you measure it, it's *first and finest at lowest cost!*

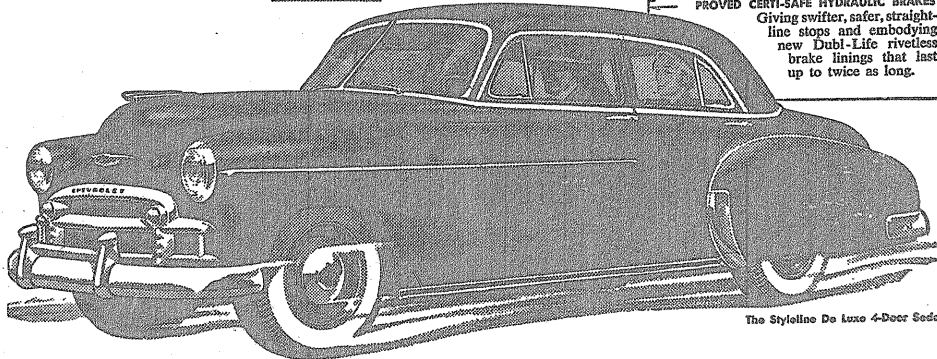
Introducing Chevrolet's Exclusive New

POWERglide

AUTOMATIC TRANSMISSION*

*Combination of Powerglide Transmission and 105-h.p. engine optional on De Luxe models at extra cost.

New Lower Prices make Chevrolet more than ever
America's Best Seller . . . America's Best Buy



The Stylolite De Luxe 4-Door Sedan

SEE YOUR LOCAL CHEVROLET DEALER
Conveniently listed under "Automobiles" in your local classified telephone directory

NEW STYLE-STAR BODIES BY FISHER
(in sparkling new color harmonies) Now more than ever "the most beautiful bodies built"—inside and out—exclusive to Chevrolet and higher priced cars.

NEW TWO-TONE FISHER INTERIORS
(extra-roomy . . . extra-luxurious) With new upholstery—new colors—new appointments—placing Chevrolet far ahead in both beauty and comfort.

CENTER-POINT STEERING
Assuring a remarkable degree of steering ease, under all driving conditions—another vital feature found only in Chevrolet and more expensive cars.

CURVED WINDSHIELD
with PANORAMIC VISIBILITY
(in Fisher Unisteel Bodies) Supplying extra vision all around the car—extra body-strength and durability—extra safety-protection for you and your family.

BIGGEST OF ALL LOW-PRICED CARS
Biggest in every way, for Chevrolet is the longest, heaviest car in its field, and has the widest tread, all of which contributes to maximum stability and safety.

EXTRA-ECONOMICAL TO OWN—
OPERATE AND MAINTAIN—
and traditionally bringing you *more value* when you trade; for Chevrolet cars are *most wanted*—new or used.

PROVED CERTI-SAFE HYDRAULIC BRAKES
Giving swifter, safer, straight-line stops and embodying new Dabi-Life rivetless brake linings that last up to twice as long.