



"BEAUTIFUL BABY," "Sonny" Mann squeezes with glee as "mother" Pat Downing feeds him unblended body-building vitamins to make him all the prettier for baby contest.

Cute kiddies vie for awards

Proud parents among Tech faculty, students and personnel are entering their offspring in the Baby Contest Saturday afternoon. Age groups have been set as: 6 months to 1½ years, 1½ years to 2½, and 2½ years to 4. Prize trophies in the three age groups

EXHIBITS

(Continued from page JW-2)

Rate your kiss-ability

Girls will just swoon over the fellows who win the "Hotcha" rating on the EE department's "Kiss-O-Meter." Don't be in doubt; get "scientific proof" of your loving prowess.

Will your voice thrill millions of radio listeners, as does Arthur Godfrey? Radio men of Rho Epsilon will give you the chance to find out, and manipulate electrical controls to make you a deep bass or piping tenor, at your request.

Bridge builders

An exhibit that promises to be a show stopper will be presented by the civil engineering department. The main exhibits will feature various types of bridges. Outstanding among these attractions will be a demonstration of what happens to a bridge when a railroad train roars over it.

Surveying work will be illustrated by means of a sand table layout of a section of Camp Armour, constructed from maps that students have charted. On clear nights visitors will be able to view Saturn and its rings via a telescope more powerful than the one on Mount Palomar.

Spring shimmy

"How to get no place in a hurry" is the theme around which the mechanics department has built its exhibit. In scientific terminology the demonstration deals with the study of vibrations, but you'll have a lot more fun if you toss mathematical applications aside and view the exhibit from the layman's point of view.

"Galloping," a term not to be confused with horse operas or Hopalong Cassidy, is shown in a breezy demonstration with three models of the Tacoma Narrows bridge. This passageway which has probably been studied and argued over more than any similar structure, was destroyed by the action of the wind because somebody had holes in their head instead of holes in the bridge.

Sight foolers

One of the highlights of this year's Technical Drawing department (See EXHIBITS on page JW-4)

EVENTS

(Continued from page JW-1)

\$10. The pictures are on display in the SU lounge.

Music to your ears

O. Gordon Erickson will direct the music clubs in their annual Junior Week concerts. The band and orchestra will provide visitors with the pleasant diversion of music.

Preceding the Interfraternity sing, the orchestra will play several selections including "Gold and Silver" waltz, and the music from "Hit the Deck."

Checkmate!

Visitors to the Open House-Junior Week activities will be able to witness one man playing five games of chess simultaneously, without even seeing the boards! Albert Sandrin, who holds city, state and national championships, will give the exhibition.

Dramatic action

Junior Week will have its customary dramatic farce this year in the form of a one act play by Molière, "The Doctor In Spite of Himself."

This delightful 17th-century comedy about an ignorant woodcutter who is forced into the role of doctor to a lady of nobility because of spite and misinformation will satisfy a universal audience. The play will be performed in the same setting as Molière described it, complete to the many colorful costumes of the period.

Directed by Beatrice Bowman, this is the second in the series of student-directed plays sponsored by Campus Players.

Junior Week audiences will see it at 3:30 and 7:00 p.m., Thursday,



FRED KISSLINGER, IIT PROFESSOR demonstrates metal flame cutting process in Metallurgical Engineering Lab.

Answer to this 'teaser' at the Math exhibit

The Mathematics Department poses this problem.

Hanging over a pulley there is a rope with a weight at one end; at the other end hangs a monkey of equal weight. The rope weighs 4 oz. per ft. The combined ages of the monkey and its mother are 4 years and the weight of the monkey is as many pounds as its mother is years old. The mother is twice as old as the monkey was when the mother was half as old as the monkey will be when the monkey is 3 times as old as its mother was when she was 3 times as old as the monkey was. The weight of the rope and weight is half as much again as the difference between the weight of the weight and the weight of the weight plus the weight of the monkey. What is the length of the rope?

For the correct answer visit the mathematics exhibit.

and at 7:30 p.m., Friday, in the North Union auditorium.

Greek's chorus

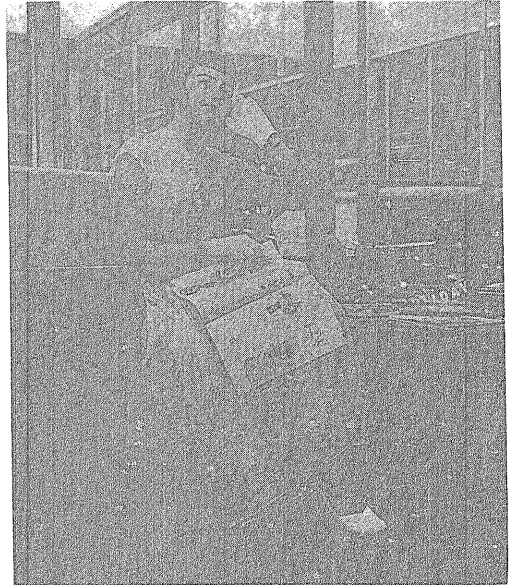
IIT's twelve social fraternities will compete in an Interfraternity sing to be held in the NU auditorium, 8:30 p.m., Thursday. Due to the fact that the fraternities have all been practicing with increased zeal this year, Delta Tau Delta, winner in the last two contests, will find the competition considerably more difficult.

As an added attraction, Delta Zeta and Sigma Kappa sororities will each give a rendition.

Card Sharks

Habitues of the South Union whose leisurely pursuits have been in less scientific directions than those required of an engineering education will have a chance to display their talents in the first annual Pinochle and Bridge tournament at 1:45 p.m., Thursday, in the SU. Because of space limitations, pairings will be held to 36 partners per tournament. Entrants will find their games enlivened by the fact that a beautiful trophy will

(See EVENTS on page JW-4)



JOAN NEHLSN strikes a Vogue-like pose in an organdy afternoon dress in practice for the coming fashion show.

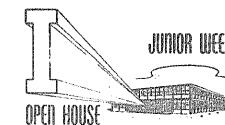
Coeds model fashions

Sharp enough to model clothes? Coeds of Illinois Tech are, and will demonstrate their attractive fashion creations at the Junior Week Fashion show at 8 p.m., Friday.

Awaiting the comeliest fashions queen is a first prize award of a Patricia Stevens modeling course. Four additional prizes are offered.

Contestants were coached last week in modeling techniques by a Pat Stevens model. Hopeful coeds include Phyllis Thomas, Nan Thomas, Anita Court, Joan Lupton, Betty Moore, Lorrie Johnson, Kara Kern, Helen Sypszak, Norma Laughlin, Doris Picha, Elaine Krause, Harriet Milewski, Monica Stearns, Joan Nehlsen, Mae Chaknis, Carol Glennie, Delores Dain, Ann Ramm, Nancy Shepul, Pat Stroner, and Hanny Fanzol.

Judges for the contest will be Mrs. John Ahern, wife of the fire protee prof.; Mrs. Robins of Dubois studio; Mrs. Reddins, of Marshall Field's department store; and Patricia Stevens, of modeling agency fame.



JWOH guide service furnished by APO

Usher and information services will be the special province of members of Alpha Phi Omega, national service fraternity. Information booth service will be conducted from the lobby of the MC building and from the Police booth on the corner of 33rd and Federal streets.

Open House Tour List

- (1) Metallurgy and Chemical Engineering Building
FPE and SE departments—101, 102
Industrial Engineering—108
Psychological services—109
Food Technology—112
Chemical Engineering—115, 116, 117, 118, 119, 120, 121, 122, 123, 124
Unit Operations laboratory—North end of MC
Liberal Studies—202, 203, 204
Metallurgical Engineering—207, 209, 215, 216, 217, 218, 219, 220, 222
- (2) Alumni Hall
NROTC—112, 216, 217, Armory, rifle range
Architecture—116, 117, 118, 203, 205, 212, 218
- (3) Chemistry Building
Chemistry department—115, 118, lobby
Chemistry laboratories
- (4) Automotive Laboratory
ME department—entire lab
- (5) Machinery Hall
ME department—1st floor, 2nd floor, basement
- (6) Main Building
Civil Engineering department—Hydraulic laboratory
Mechanics department—411
Institute of Design—414
Technical Drawing department—416, 501, 502, 504, 505, 506, 5th floor corridor
- (7) Physics Building
Physics department—101, 102, 103, 104, 104B, 313, 310, 311, 312, 308
- (8) Chapin Hall
Civil Engineering department—102, 105, 108, 111, 120, 202, 205
Mathematics department—214
- (9) Psychology Building
Yacht club—room 3
Civil Engineering department—material testing laboratory
Technology News and Integral will have displays in South Union.