

Meet Ethel, the dean's right hand

By Wesley Ooms

"Hello," said a clear voice. "May I help you?" Such is the greeting afforded by the dean of students' smiling secretary, Miss Ethel Hammill. With a personality to match her voice and smile, Miss Hammill interested in seeing Dean of Students Clarence E. Deakins.

Ethel, as she is known to her fellow White Collar Girls, began working on the Illinois Tech campus as assistant to the purchasing agent. Promotion to her present position as dean's secretary was



ETHEL HAMMILL

unique, to say the least. She was drinking coffee in the cafeteria when Dean Deakins asked whether she would like to be his secretary. Thinking he was joking, she said "Yes." On later contemplation, she decided to find out if Mr. Deakins was serious, which he was, and in

tech timetable

Items appearing in Tech Timetable are those which have been scheduled with the Dean of Students' office.

FRIDAY, NOVEMBER 18

Chess club, 4 p.m., SU lounge
Organization coffee hour, 4 p.m., Exec. conf. room

SATURDAY, NOVEMBER 19

Urban Land Institute, 9 a.m., Exec. conf. room

MONDAY, NOVEMBER 21

President Heald, 11 a.m., Exec. conf. room
Delta Zeta, 1 p.m., 211C
Campus Players, 5 p.m., NU aud.

TUESDAY, NOVEMBER 22

Placement, 9 a.m., Exec. conf. room
ASME assembly, 3 p.m., NU aud.
Optics & Astronomy Club, 2 p.m., 109MC
Campus Players, 5 p.m., NU lounge
Lutheran Students' association, 5 p.m., Exec. conf. room
Student Admission Advisory board, 5 p.m., AH conf. room

WEDNESDAY, NOVEMBER 23

Operations Council, 9:30 a.m., Exec. conf. room
ARF chorus, 1 p.m., NU aud.
SAM movies, 2-4 & 4-6 p.m., 131MC
Junior class officers, 3 p.m., Dean's conf. room
Sigma Kappa, 5 p.m., AH conf. room
Mr. Selheimer, 6 p.m., Exec. conf. room

THURSDAY, NOVEMBER 24

SAM movies, 6-8 p.m., 131MC
Thanksgiving vacation!

TUESDAY, NOVEMBER 29

Mr. Spaeth, 11 a.m., Exec. conf. room
Delta Zeta, 1 p.m., 202MC
IAES, 1 p.m., 202M
Jazz club, 1 p.m., 131MC
Jazz club, 4:30 p.m., 131MC
Campus Players, 5 p.m., NU lounge

WEDNESDAY, NOVEMBER 30

ARF chorus, 12 noon, NU aud.
SAM movies, 2-4 & 4-6 p.m., 131MC
Campus Players, 5 p.m., NU aud.
Newman club, 5 p.m., 202M
ITSA, 6 p.m., NU lounge
Mr. Selheimer, 6 p.m., Exec. conf. room
Sigma Xi, 8 p.m., 115CB

THURSDAY, DECEMBER 1

ASCE luncheon, 11 a.m., Exec. conf. room
ASCE assembly, 1 p.m., NU aud.
Co-op club, 1 p.m., 108MC
Fluid Mechanics, 4 p.m., 101MC
Campus Players, 5 p.m., NU lounge
Sigma Kappa, 5 p.m., AH conf. room
SAM movies, 6 p.m., 131MC

FRIDAY, DECEMBER 2

Chess club, 4 p.m., SU
Organization coffee hour, 4 p.m., Exec. conf. room
Campus Players, 5 p.m., NU aud.
Homecoming dance, 8 p.m., NU aud.

SATURDAY, DECEMBER 3

NROTC dance, 8 p.m., AH

Future Union will cure campus ills; huge structure to be on Ogden Field

By Alan Plait

Ever since the inception of IIT, there has been drastic need for an extensive student union building on campus. Techwaks are well familiar with the lack of space for organizational meetings, publications, cafeterias, lounges and other essential student activities. Projected plans for the new student union building provide for adequate area not only for present requirements, but for expected future needs also.

Due to the scattering of club offices throughout the campus, the Dean of Students office has had an excessive amount of paper work in order to coordinate the activities of the 83 organizations at IIT. The lack of centralized club headquarters has resulted in incomplete filing systems and clashing of activities schedules.

Although plans are tentative, the new union reserves its entire second floor for conference rooms and offices for honorary societies, professional groups and clubs. This floor will also contain a banquet hall for student use.

At present The Integral carries on its year-long preparations for publication in an office space 10x15 feet. In this same room Technette and the Student Directory are compiled!

Technology News, together with the activities of Technology Newsletter and Pi Delta Epsilon, honorary journalism fraternity, has an

office area of 300 square feet, or about room enough for a medium-sized living room.

On the second floor of the new union building the paper will have a working area five times the present amount. The integral staff will have room to breathe in a large airy office.

Auditorium facilities don't need much review. With bad acoustics, faulty stage prominence and a shortage of seating capacity, it is evident that IIT needs a more suitable assembly hall. Future plans provide for an auditorium with vaulted ceiling, seating capacity of 1,400, modern stage equipment and sloping aisles. An added feature will be the musical and dramatic group rehearsal rooms on the basement floor.

One of the prime requisites of obtaining more coeds for IIT would seem to be attractive sorority conditions.

Lounge and sorority resources

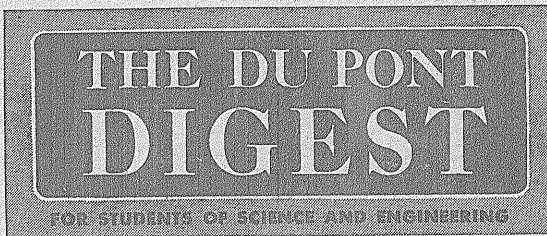
for Tech females are practically nil.

This will be settled on the second floor of the future union, where attractive suites will be located for the women's uses. Guest rooms will also be included.

The basement will hold a large cafeteria and kitchen. Probably included there will be a general student lounge.

However, don't forget the ever-present faculty. They will be meeting in a faculty club room far exceeding present accommodations. Located at the rear (south end) of the first floor, it will also contain dining facilities. A faculty lounge will be placed nearby.

An interesting innovation will be inaugurated when the tentative plans are complete. Students will have the chance to add refinements, additions or corrections to the plans. After all, it will be a STUDENT union!



Research across the U. S. A.

YOUNG SCIENTISTS ARE BUILDING CAREERS WITH DU PONT FROM CONNECTICUT TO TEXAS

When you think of Du Pont research, you may think first of Wilmington, Delaware. Actually, only eight of the Company's 36 research groups are located there. Du Pont scientists now pursue their studies in 11 states scattered from Connecticut to Texas.

Each of these laboratories is a self-contained operation. It may be devoted in part to fundamental research and applied research, or to investigations looking to the development of new products—sometimes a combination of these activities.

An unusual Du Pont laboratory is one opened last year at Newburgh, New York.

Inside the Laboratory

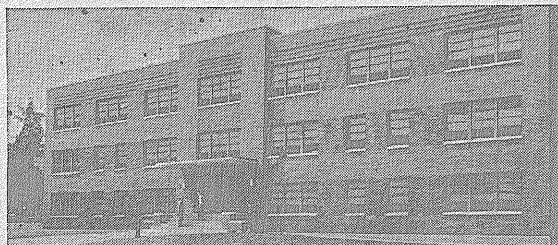
In the three-story building at Newburgh, scientists have at their disposal the most modern equipment for study of coated fabrics and plastic sheetings under all sorts of conditions. For example, a new product can be tested in a room maintained

at a temperature of -20° F. In other rooms, the effects of high temperature and humidity can be studied. Equipment is available for testing tensile strength, tear resistance, fading, flex and flame resistance, and many other characteristics. One of Du Pont's 33 libraries has quarters in the building; there is a photographic darkroom, as well as offices, conference and work rooms.

The Newburgh Laboratory works closely with the adjacent plant, which makes "Fabrikoid" pyroxylin coated fabrics, "Fabilite" vinyl resin coated fabrics and plastic sheetings, "Tontine" washable window shade cloth, bookbinding materials, and other coated and impregnated fabrics and plastic sheetings for many uses.

Research at Du Pont

Research has long been a major activity at Du Pont, and it flourishes in an atmosphere of appreciation, encouragement and patience. The new products, the new plants, and the new and better jobs of the years to come will develop from the painstaking research programs being carried on today in the laboratories.



Newest Du Pont laboratory, at Newburgh, N. Y., was opened last year. It is devoted to research and development work in the field of coated and impregnated fabrics and allied products.



H. A. Van Elton, B. S. Ch., Colgate '49, and E. R. Gris, M. S. Ch., Worcester Polytechnic Institute '48, investigating the properties of vinyl compounds used in plastic-coated fabrics.



K. F. Richards, B. S. Ch. E., Cornell '48, and E. K. Holten, M. S. Ch. E., Delaware '48, studying "Tyflon" tetrafluoroethylene resin insulating material with special apparatus at the Newburgh Laboratory.

Choice of Careers

Each of the Du Pont manufacturing departments conducts continuous research. They operate much like separate companies, with interests ranging from heavy chemicals to plastics and textile fibers. Each holds challenging opportunities for college-trained chemists and physicists, as well as chemical, civil, electrical, industrial and mechanical engineers, also those specializing in production, sales and many other fields.

In this alert, ever-growing organization, young graduates can choose from a variety of careers the one that suits them best as their ability and interests develop.



BETTER THINGS FOR BETTER LIVING... THROUGH CHEMISTRY

Entertaining, informative—Listen to "Cavalcade of America" Tuesday Nights, NBC Coast to Coast