

# Final exam times near; here is official list

Institute Registrar Raymond D. Mende released the following final examination schedule Tuesday. Students are urged by Mr. Mende to observe carefully the Institute policy regarding conflicts.

## THURSDAY, JANUARY 19

8:10 - 10:00	
Biol. 440-A	102C
B. E. 427-A,B,C	3 B2
Chem. 451-A	506M
Chem. 441-A	118CB
C. E. 412-A	108C
C. E. 412-B	108C
E. E. 419-A,B	101MC
F.P.E. 407-A	111C
Engl. 401-A	302M
Engl. 401-B,C,D,E,F,G,H	115CB
Engl. 401-J,K,L,M,N	131MC
Engl. 401-O,P,Q,R,S	305M
Engl. 401-T,U	102MC
M. E. 402-A	400P
M. E. 402-B	401P
N. S. 301-A	108MC

## 10:10 - 12:00

B. E. 455-A	102MC
C. E. 408-A	108C
H. E. 355-A	802D
I. E. 441-A	101MC
Math. 123-A	216C
Math. 202-A	114C
Math. 202-B	111C
Math. 202-C	208C
Math. 202-D	208C
Math. 202-E	217C
Math. 202-F	214C
M. E. 306-A,B,C	3 B2
M. E. 310-A	200MH
M. E. 316-B,D	302M
M. E. 316-C	506M
M. E. 331-A	121MC
M. E. 331-B	200MH
N. S. 401-A,B	108MC
Phys. 512-A	300P
Psych. 405-A	105C

## 1:10 - 3:00

B. E. 102-A	118CB
B. E. 102-B,C,D,E	3 B2
B. E. 351-A	115CB
Chem. 407-A	131MC
C. E. 308-A	108C
C. E. 308-B	101MC
E. E. 403-A,B	302M
F.P.E. 408-A	105C
Math. 410-A,B,C,D	302M
P. S. 351-A (see B.E. 351)	115CB
Psych. 301-A,B	102MC

## 3:10 - 5:00

B. E. 348-A	111B
Chem. 413-A	118CB
C. E. 403-A	102C
E. E. 310-A,C	506M
H. E. 310-A	812D
Math. 201-B,E,H	115CB
Math. 201-D,K,M	131MC
Math. 201-J	302M
Math. 201-C	114C
Math. 201-L	105C
Math. 201-O	108C
Math. 201-P	202C
M. E. 409-A,B	3 B2
M. E. 409-A,B	101MC
Phys. 401-A	305M
Phys. 515-A	300P

## FRIDAY, JANUARY 20

8:10 - 10:00	
Biol. 301-A	102C
B. E. 315-A,B	305M
Chem. 116-A	115CB
C. E. 314-A,B	101MC
C. E. 409-A	108C
E. E. 205-A,B,C	131MC
E. E. 408-A,B,C,D	3 B2
F.P.E. 201-A	102MC
I. E. 337-A	108C
M. E. 401-A,B,C	506M
M. E. 403-A	200MH
Met.E. 202-A	104MC
Phys. 321-A	300P

## 10:10 - 12:00

B. E. 443-A,C	108MC
B. E. 443-B	202MC
Chem. 451-A	204MC
Chem. 231-A	131MC
C. E. 211-A,B,C,D	3 B2
I. E. 331-A	118CB
Fren. 101-A	102C
Span. 101-A	105C
M. E. 417-A	102MC
M. E. 417-B	101MC
Mech. 201-A,B,C,D,E,F	115CB
Mech. 201-G,H,I	302M
M. E. 422-A,B	305M
N. S. 201-A,B,C	Armory
Phys. 522-A	300P
P. S. 451-A	506M

## 1:10 - 3:00

B. E. 302-A,B,C	131MC
Chem. 512-A	101MC
Chem. 513-A	115CB
C. E. 435-A	102C
E. A. 301-A	105C
E. A. 302-A	108C
E. E. 206-A,B,C	305M
Engl. 102-A,B,C,D,E	115CB
F.P.E. 405-A	111C
M. E. 406-A	200MH
Met.E. 417-A	102MC
Phys. 203-A	302M
Phys. 204-A	302M
Educ. 301-A	506M

## 3:10 - 5:00

B. E. 101-A,C,D,E	115CB
B. E. 101-B,K,N	131MC
B. E. 101-F,J	302M
B. E. 101-G	101MC
B. E. 101-H	108C
B. E. 101-L,M	506M
C. E. 408-A	105C
E. E. 425-A,B,C	305M
F.P.E. 305-A	118CB
M. E. 205-A,B	3 B2
M. E. 312-A,B,C,D	3 B2
Phys. 308-A	108MC
Phys. 527-A	300P

Phys. 302-A	111C
E. A. 401-A	208C

## SATURDAY, JANUARY 21

8:10 - 10:00	
B. E. 321-A	302M
Ch.E. 306-A	506M
C. E. 223-A,B,C	131MC
Chem. 535-A	109MC
E. E. 426-A	102C
F.P.E. 301-A	105C
Math. 101-A	118CB
Math. 101-A,H	108MC
Math. 101-B,G	305M
Math. 101-C	111C
Math. 101-D	114C
Math. 101-E	202C
Math. 101-F	108C
Math. 101-G	208C
M. E. 408-A	101MC
M. E. 408-B	102MC
Phys. 202-A,B,C,D	115CB
Psych. 301-A,B	3 B2
Math. 513-A	108C

## 10:10 - 12:00

B. E. 370-A	102MC
Ch.E. 331-A	101MC
Chem. 603-A	118CB
C. E. 207-A,B	305M
C. E. 304-A,B	118CB
E. E. 307-A,B	131MC
Germ. 201-A	3 B2
Germ. 211-A	3 B2
Germ. 211-B	102C
M. E. 311-A,B,C,D,E	115CB
M. E. 407-A,B	302M
M. E. 413-A,B	506M
Met.E. 206-A	202MC
Phys. 417-A	300P
Phys. 501-A	500P
Educ. 313-A	105C

## 1:10 - 3:00

B. E. 450-A	506M
Chem. 423-A	115CB
Chem. 225-A	115CB
Chem. 515-A	104MC
C. E. 323-A	101MC
C. E. 323-B	3 B2
E. E. 306-A,B,D	131MC
E. E. 427-A,B	302M
Math. 102-A	115CB
Math. 102-B	102MC
Math. 102-C	108MC
Math. 103-A	105C
Math. 103-B	101MC
Math. 121-A	108C
Math. 121-B	108MC
Phys. 535-A	300P

## 3:10 - 5:00

B. E. 371-A,B	302M
Chem. 345-A	118CB
C. E. 315-A,B,C	506M
C. E. 323-A	305M
E. E. 407-A,B,C	3 B2
E. E. 415-A,B,C,D,E	115CB
I. E. 221-A,B	102MC
I. E. 411-A,B	131MC
Math. 204-A,B	101MC
Math. 204-B	108MC

## MONDAY, JANUARY 23

8:10 - 10:00	
B. E. 120-A,F	506M
B. E. 120-B,G	3 B2
B. E. 120-C,D	302M
M. E. 430-A,B,C	305M
M. E. 430-D	200MH
Mech. 201-A	101MC
Mech. 201-B,D	102MC
Mech. 201-C	204MC
Mech. 201-E	108MC
Mech. 201-F,H,I	115CB
Mech. 201-G,K	131MC
Mech. 201-J	202MC
Mech. 305-A	101MC
M. E. 375-A	118CB
S. 377-A	115CB
Soc. 381-A	102C
Soc. 382-A	105C

## 10:10 - 12:00

B. E. 121-A	111B
B. E. 224-A	115B
B. E. 343-A	119B
Chem. 111-A	121MC
Chem. 113-A	115CB
Chem. 115-A	3 B2
Chem. 115-A	102MC
Chem. 231-A	131MC
C. E. 410-A	105C
E. E. 418-A,C,D	305M
E. E. 418-B	101MC
Mech. 203-A,B	111C
Phys. 310-A	300P
Soc. 385-A	108C
Soc. 485-A	108C
Educ. 317-A	111C

## 1:10 - 3:00

B. E. 375-A	305M
B. E. 375-B	302M
B. E. 375-A	115CB
C. E. 205-A	204MC
C. E. 215-A	102MC
Chem. 415-A	108C
Math. 415-B	105C
Math. 505-A	108MC
Phys. 205-A,B,C,D,E,F,G,H	131MC
Phys. 205-J,K,L	506M
Phys. 205-M,N,O,P	3 B2
Hist. 311-A	101MC
Psych. 311-A	109C

## 3:10 - 5:00

Biol. 110-A	101MC
B. E. 360-A	102MC
Ch.E. 311-A	131MC
C. E. 320-A	102C
H. E. 220-A	802D
M. E. 300-A	305M
M. E. 447-A,B,C,D,E	115CB
Phys. 206-A,B,C,D	302M
Phys. 206-E,F,G,H,J,K	3 B2
Psych. 421-A	105C

## TUESDAY, JANUARY 24

8:10 - 10:00	
B. E. 460-A	111B
Chem. 221-A	115CB
Chem. 341-A	131MC

C. E. 417-A,B	3 B2
E. E. 423-A	202MC
Math. 420-A	118CB
Math. 521-A	118CB
M. E. 305-A,B	302M
M. E. 305-C	305M
M. E. 305-D	506M
M. E. 309-A,B	305M
N. S. 101-A,B,C	101MC

## 10:10 - 12:00

Biol. 305-A	102C
B. E. 451-A	305M
C. E. 305-A	105C
C. E. 305-B	108C
Chem. 542-A	118CB
M. E. 347-A,B	302M
Mech. 202-A	131MC
Mech. 202-B	115CB
Mech. 202-C	101MC
Mech. 202-D	102MC
Phys. 311-A	108MC
Hist. 303-A	3 B2

## 1:10 - 3:00

Chem. 431-A	302MC
E. E. 441-A,B,C	305M
H. E. 250-A	810D
M. E. 322-A,B,C,D	115CB
Phys. 201-D,G	118CB
Phys. 201-E,H	506M
Phys. 201-F	3 B2
Phys. 201-K,L	302M
Phys. 201-N,Q	131MC
Phys. 201-M	102C
Phys. 201-P	105C
Phys. 201-T	108C

## WEDNESDAY, JANUARY 25

8:10 - 10:00	
B. E. 462-A,B	302M
Biol. 421-A	102C
C. E. 302-A	105C
E. E. 402-A,B,C	115CB
Math. 306-A	208C
Met.E. 301-A	202MC
Met.E. 302-A	204MC
P. S. 276-A	101MC
P. S. 276-B	101MC
Hist. 401-A	114C
S. E. 301-A,B	305M
S. E. 405-A	302M

## 10:10 - 12:00

Chem. 533-A	118CB
Math. 460-A	205C
Mech. 302-A,B,C (10-12:30)	131MC
Mech. 302-D (10-12:30)	101MC
Met.E. 323-A	115CB
Met.E. 331-A	102MC
Phys. 412-A	305M
P. S. 351-A	302M
Hist. 309-A	102C

## 1:10 - 3:00

B. E. 414-A,B,F,G,H	115CB
E. E. 414-C	302M
E. E. 414-D,E	131MC
Met.E. 310-A	202MC
P. S. 474-A	102C
Soc. 281-A	305M

## 3:10 - 5:00

Met.E. 231-A,B	115CB
Met.E. 232-A	131MC
P. S. 426-C,D,E	302M
P. S. 426-F,G,H	302M
P. S. 426-I,J,K,L	3 B2
P. S. 426-M,N,O	506M
P. S. 426-P	101MC
P. S. 426-Q	102MC

\*Refers to members of class whose names begin with the letters indicated.

The following policies are in effect with regard to conflicts in an individual students' examination schedule:

1. **Internal Departmental Conflicts**—The department will resolve the conflict.
  2. **Cross Departmental Conflicts**—The student's major department examination takes precedence.
  3. **Cross Departmental Conflicts in Service Departments**—Lower numbered course takes precedence.
  4. **Cross Departmental Conflicts in Service Departments with both Courses of the same Number**—Department that is first in alphabetical order takes precedence.
- In all cases it is the responsibility of the student with the conflict to report to his instructors who will resolve the conflict.

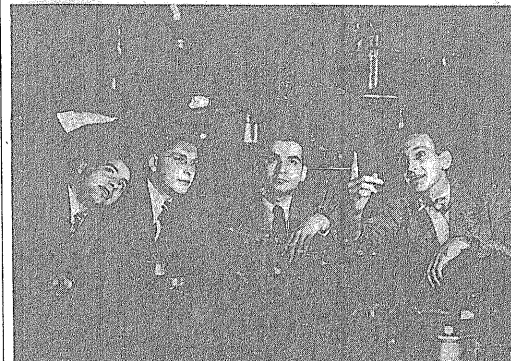
## Classified Ads

Biol. 110-A	101MC
B. E. 360-A	102MC
Ch.E. 311-A	131MC
C. E. 320-A	102C
H. E. 220-A	802D
M. E. 300-A	305M
M. E. 447-A,B,C,D,E	115CB
Phys. 206-A,B,C,D	302M
Phys. 206-E,F,G,H,J,K	3 B2
Psych. 421-A	105C

WANTED-A student to direct & cast a play under the auspices of CAMPUS PLAYERS. Obtain full details in room 208 NSU.

MUSIC—Three-piece band. On or off campus. RA 5-2512.

## Last of a Series



INDUSTRIAL PROBLEM is explained by John A. Due, right, personal head of Link-Belt Company, to placement team, left to right, Myron Golding, Mort Goldberg and writer Hal Bergen.

## Placement teams boost Tech grads

By Hal Bergen

"What's so good about Illinois Tech men?" ... "You're from IIT, where is it located?" ... "Why is the Illinois Tech curriculum better than any other?" ... We are listening in on a briefing session as members of a Placement Advisory board interview

team get ready to go out and sell Illinois Tech graduates to industry. They are getting their answers ready for the skeptical employer who is not easily sold. The questions above are typical of those the team members expect to be asked. They can't afford to fumble or stammer; a bad impression is worse than no impression in this game. From all indications, though, the Placement Advisory board teams are leaving a reservoir of good will behind them which will make it easier for you to land a job as an Illinois Tech grad.

Let's follow the team from its briefing session out to the office or plant where an appointment has previously been made by phone. The conversation with the company representative generally starts off with the type of question posed before. From then on, the team may find itself discussing many unforeseeable problems.

In order that the team as a whole be as well informed as possible it is made up of three men from different departments, preferably with different options. Also, the interests of the particular firm are anticipated so that the team members' backgrounds are related to the firm's needs.

When the interview progresses to the point where the employer is asking all the questions, the team knows it has scored a success and is quick to make its ultimate