

Freedom at the deepest level.

The better you know yourself, the better you will function. "Better functioning" includes symptom improvement and alleviation, along with improvement in work, academic, social, romantic, and even athletic life. Insight-oriented psychotherapy strives to teach you how and why you function in the ways you do. It shows you that you have an internal world, and it interprets how that internal world operates. When you have freedom, you have power. You have a greater range of choices available to you in any given situation. Insight allows you to break free from old habits and patterns of behavior. It lets you choose new ones for a successful future full of choices.

# Juvenile Treatment Center



## Introduction



## Location

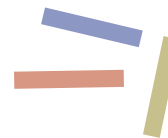
Quito Ecuador



## Site

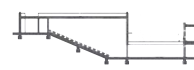
Guanguiltagua Metropolitan Park

Site Analysis



## Program

Idea



## Project

Site Plan

Plan level 0.00

Plan level +3.65

Plan level - 5.50

Sections

Renders

Model pictures

# Juvenile Treatment Center



# Juvenile Treatment Center

How interesting would be to address a social problem by relating a complicated program with a radical landscape. in Ecuador the Justice Suystem treat juveniles as adults. This has generated a debate on the readjustment of the justice and treatment system. The proposed project is a residential treatment facility in Quito - Ecuador. The idea of the project is to make part of the readjustment of the ecuadorian justice system.

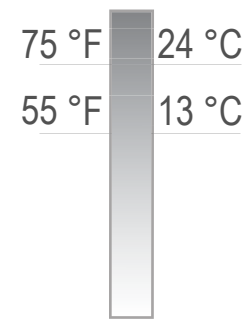
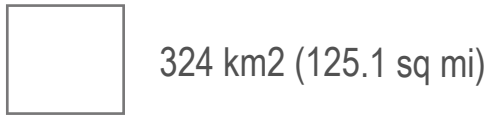
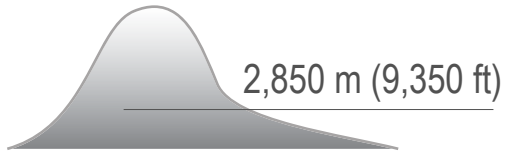


# Quito - Ecuador

Quito is the capital of Ecuador located in the middle of the world and developed in the middle of a strong topography near the Andes Mountains. One of the most notable characteristics of the city is the weather, having the two seasons in just one day. Quito also enjoys of a series of parks that are part of the green belt located in the middle of the city.



00°15'00"S 78°35'00"W



WWW  
<http://www.quito.gov.ec>

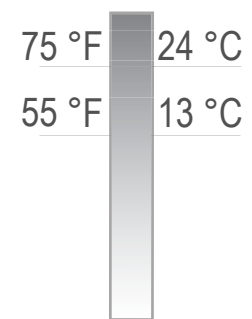
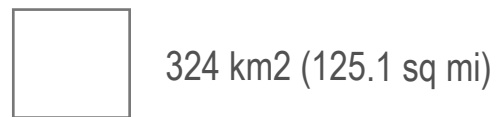
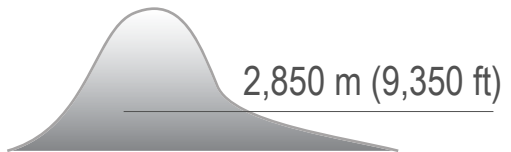


# Quito - Ecuador

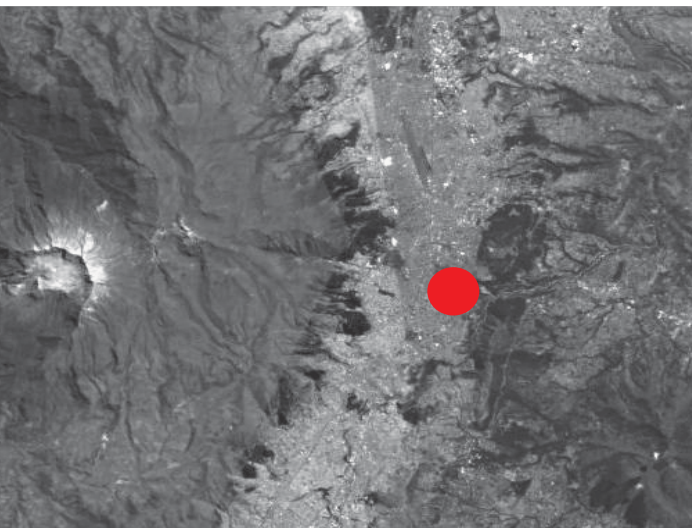




00°15'00"S 78°35'00"W



WWW  
<http://www.quito.gov.ec>

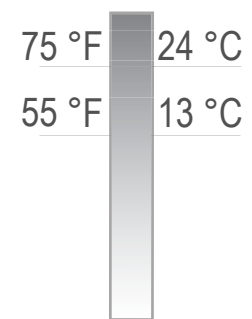
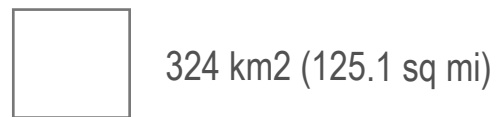
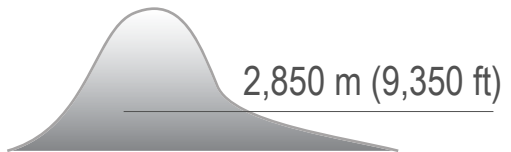


# Quito - Ecuador

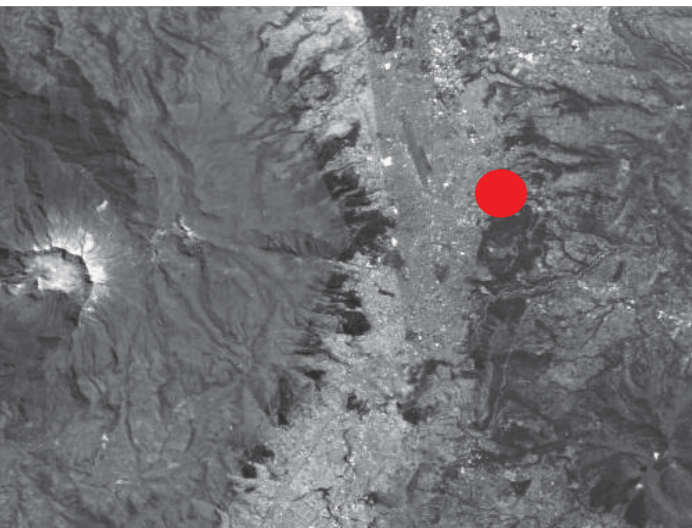
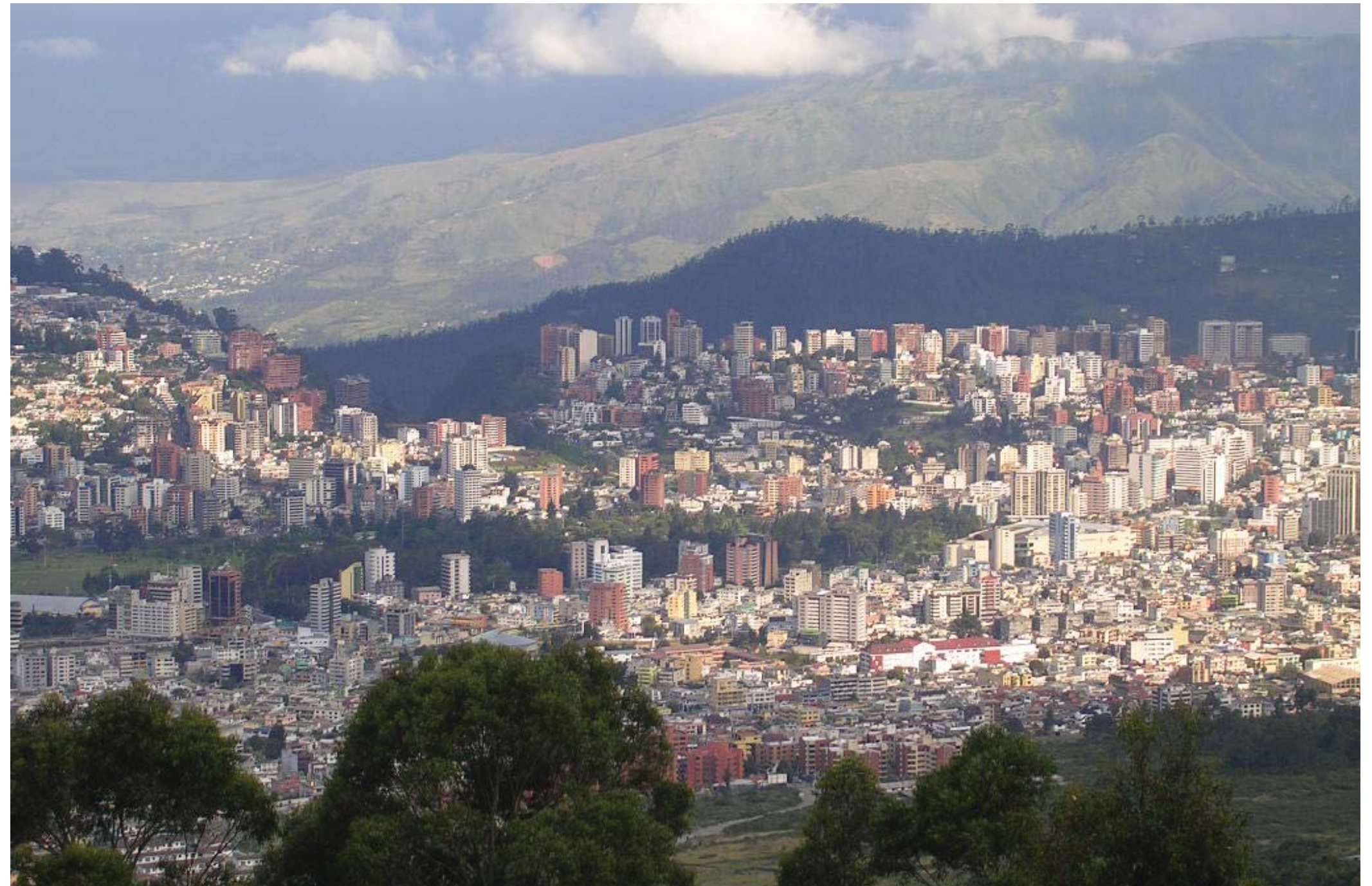




00°15'00"S 78°35'00"W



WWW  
<http://www.quito.gov.ec>

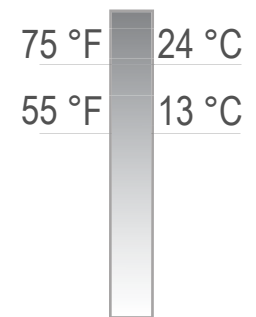
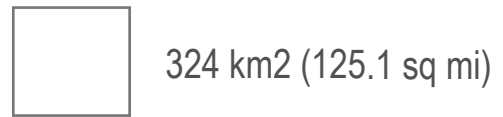
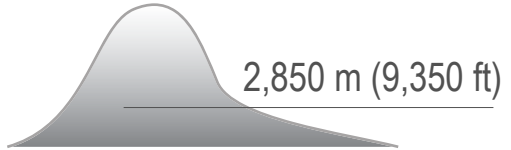


# Quito - Ecuador



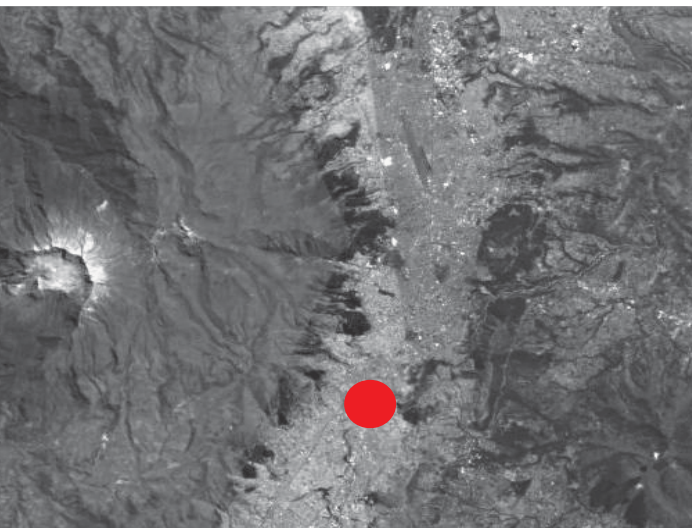


00°15'00"S 78°35'00"W



WWW

<http://www.quito.gov.ec>

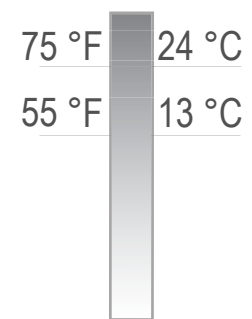
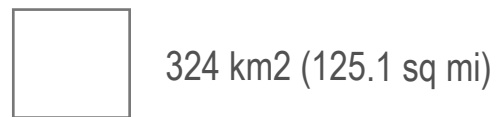
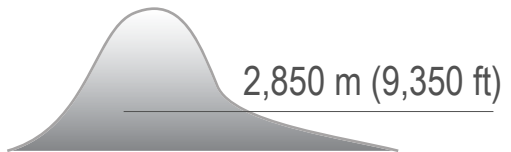


# Quito - Ecuador

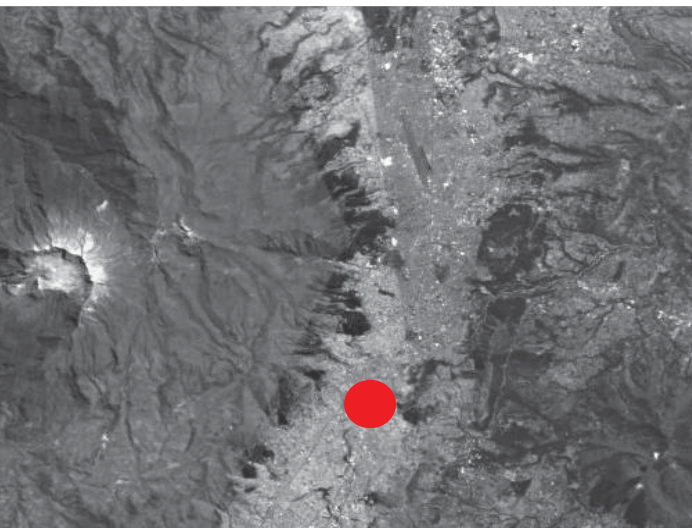




00°15'00"S 78°35'00"W



WWW  
<http://www.quito.gov.ec>

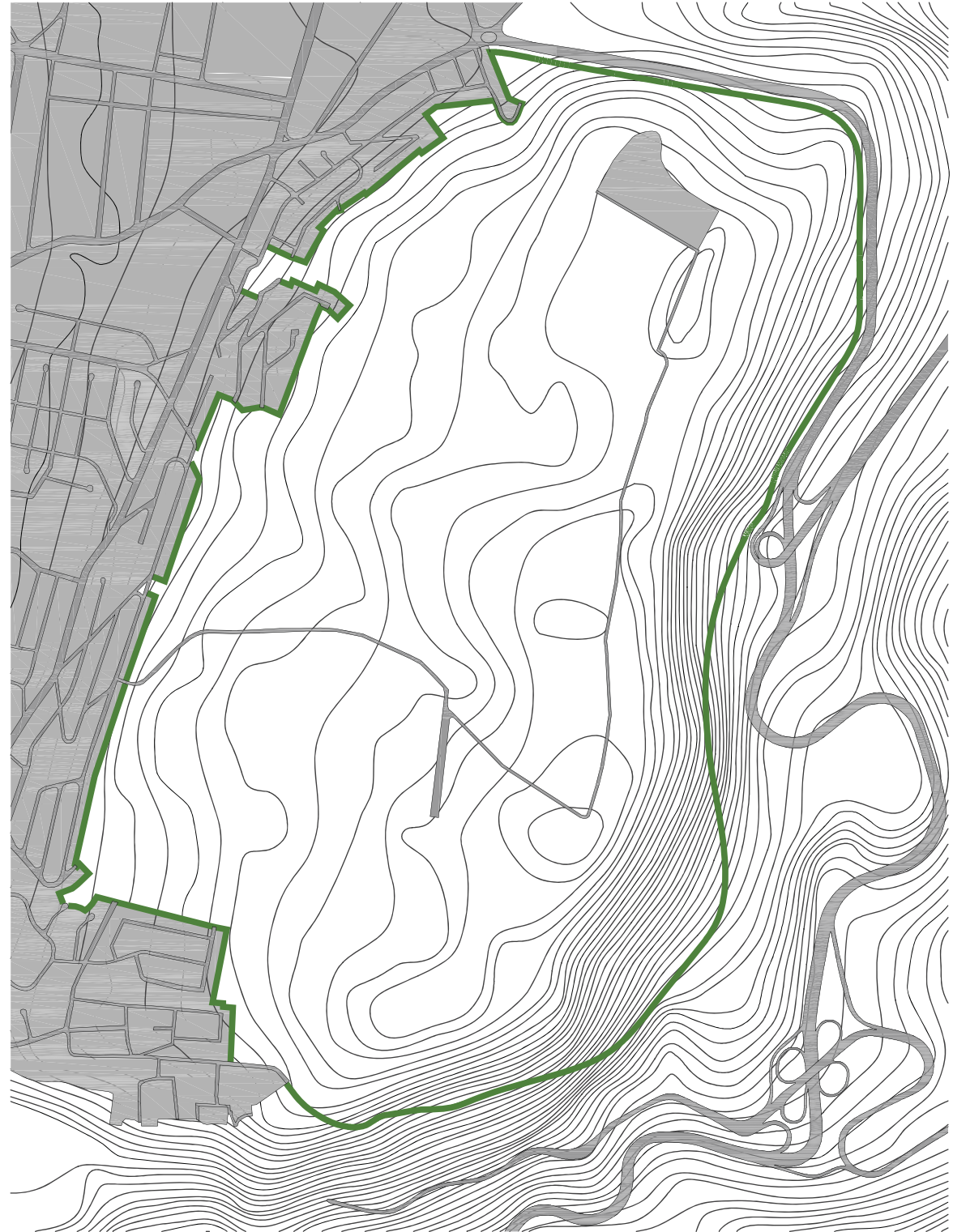
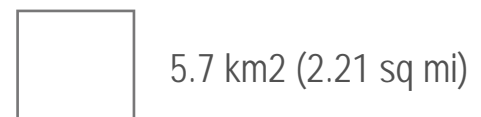
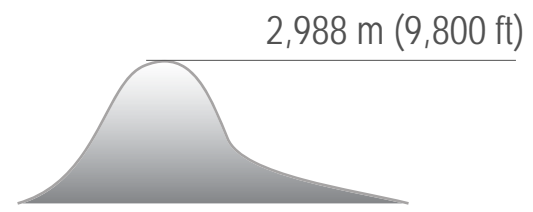


# Quito - Ecuador

# Guanguiltagua Metropolitan Park

"Viewpoint of holy heaven"  
The place is respectful of nature and cultural expression, democratic, participatory and sustainable. It is a place for citizens to practice values and identity, a teaching resource, a safe place for leisure and recreation of residents and visitors to the capital of Ecuador.

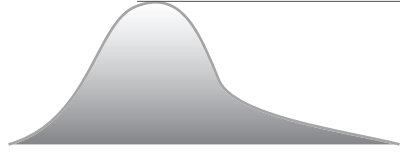




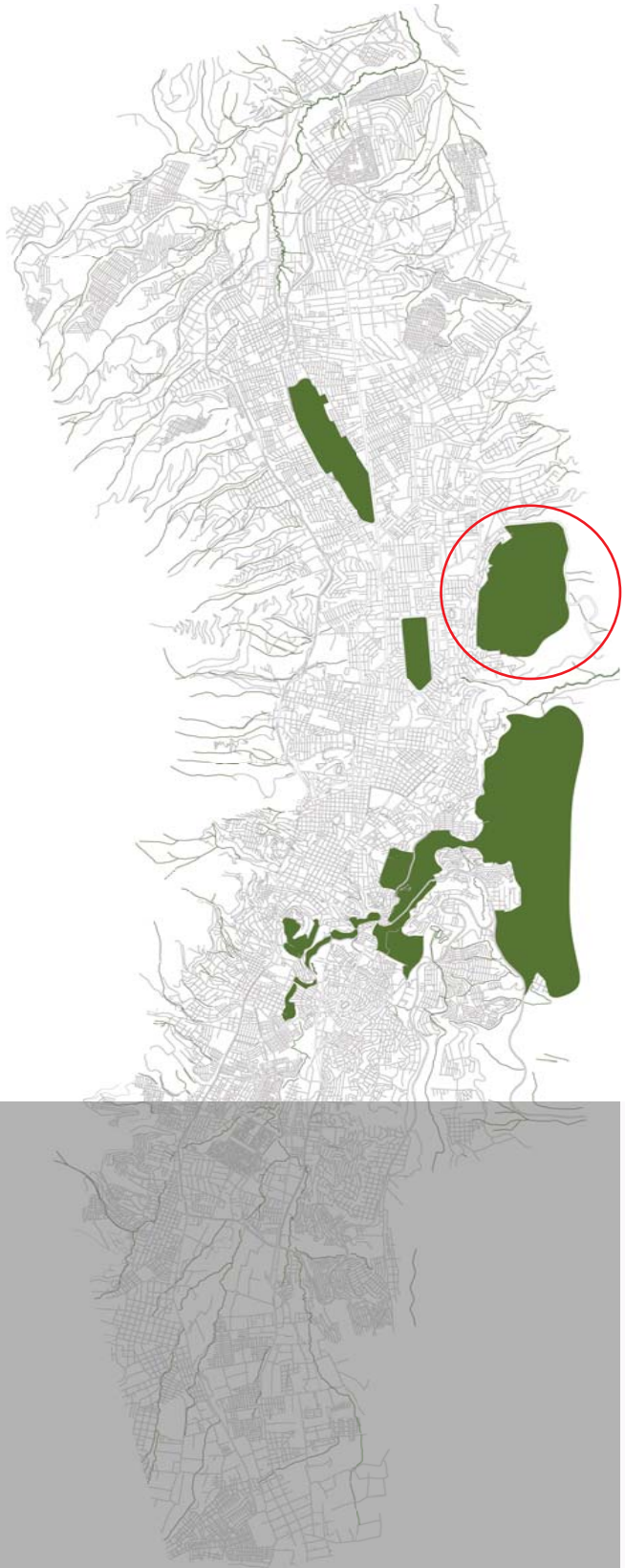
# Guanguiltagua Metropolitan Park



2,988 m (9,800 ft)



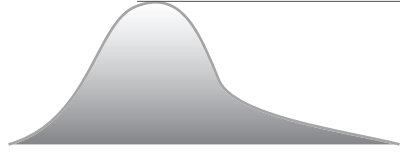
5.7 km<sup>2</sup> (2.21 sq mi)



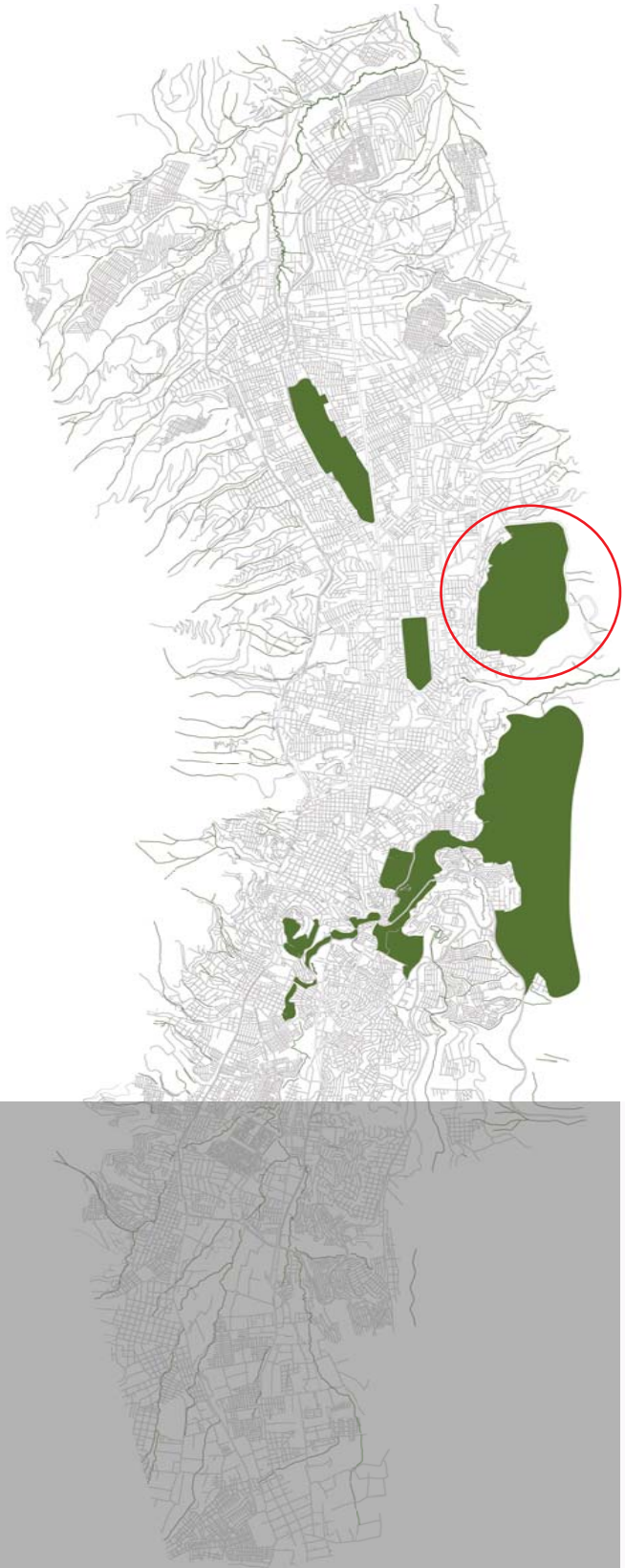
Guanguiltagua Metropolitan Park



2,988 m (9,800 ft)

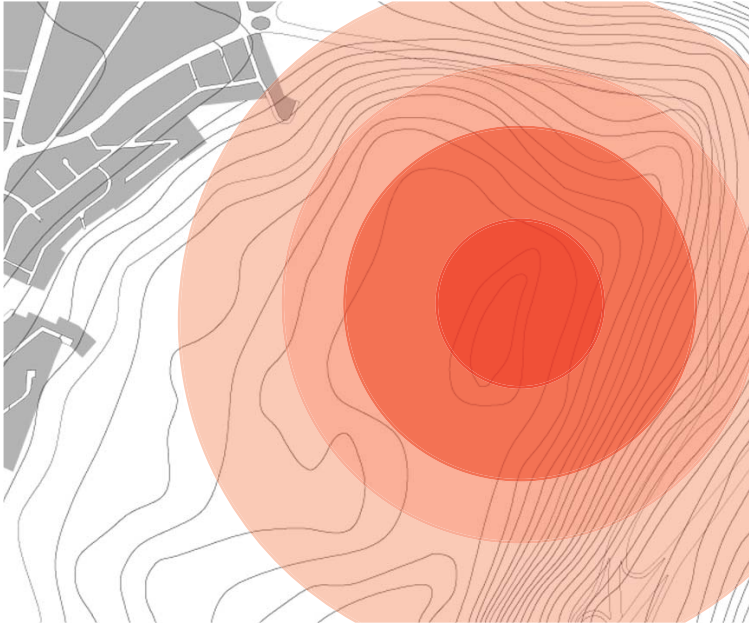
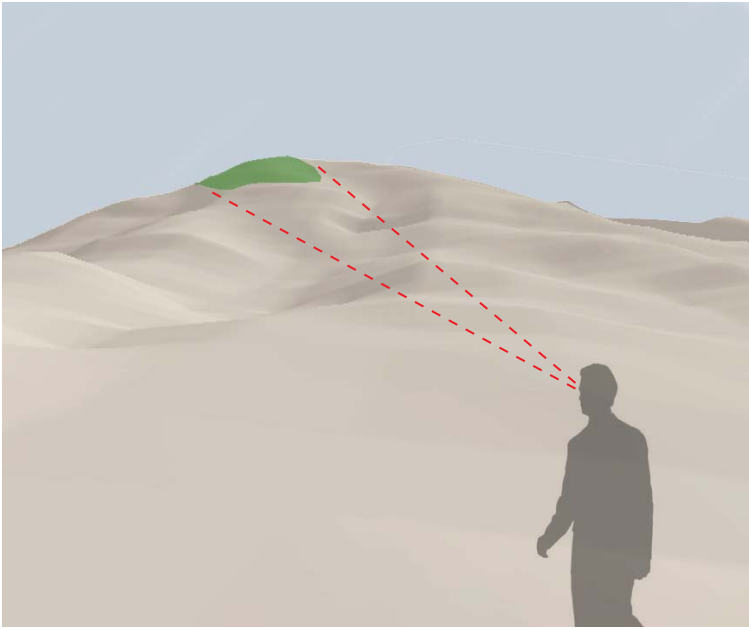
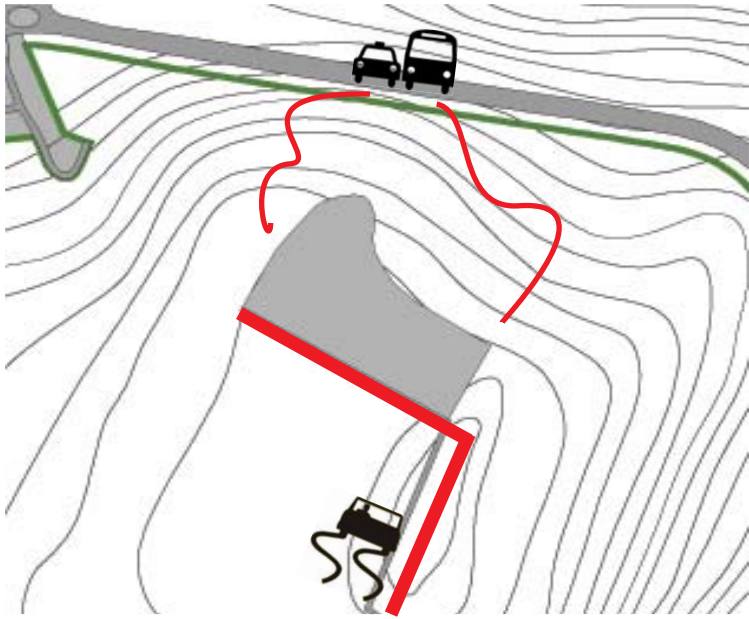
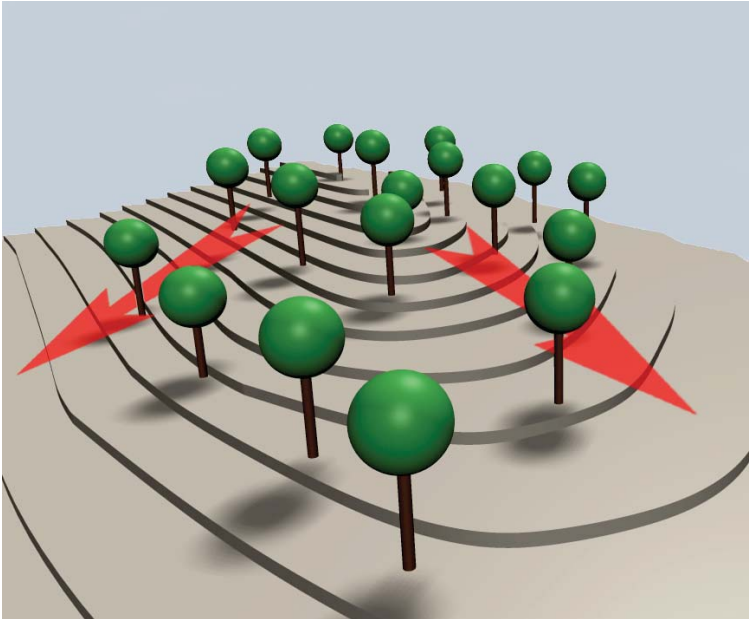


5.7 km<sup>2</sup> (2.21 sq mi)



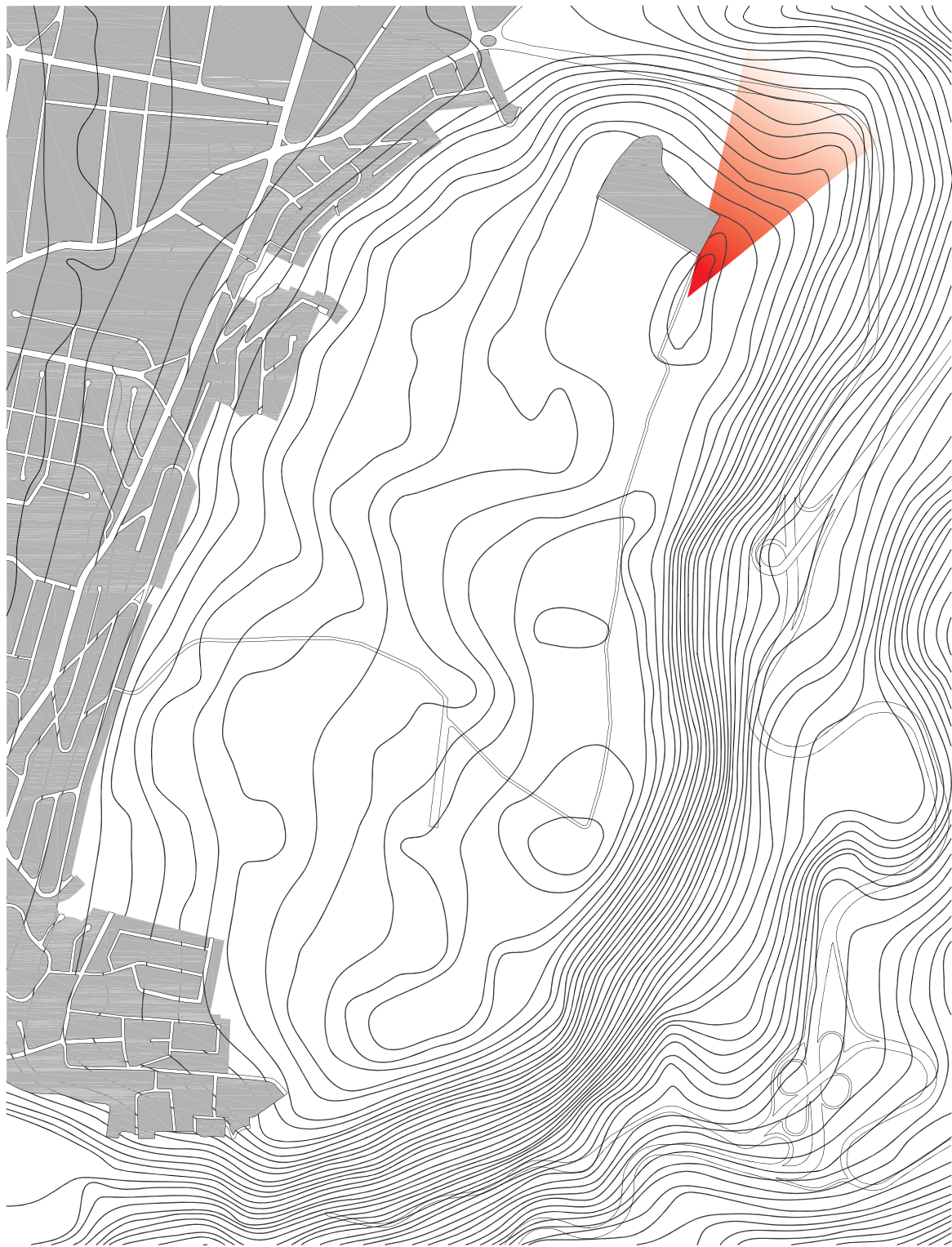
Guanguiltagua Metropolitan Park





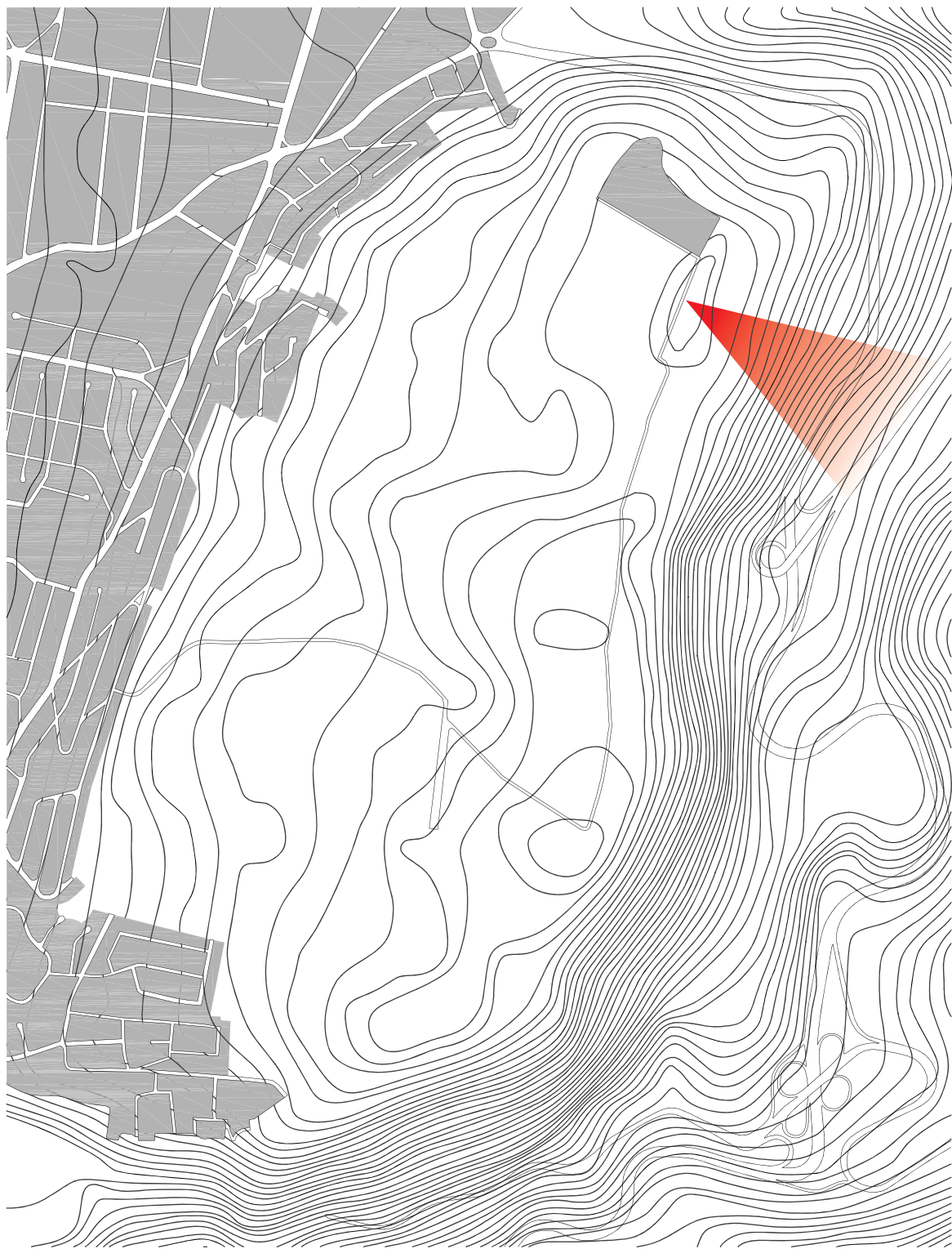
Site





Site





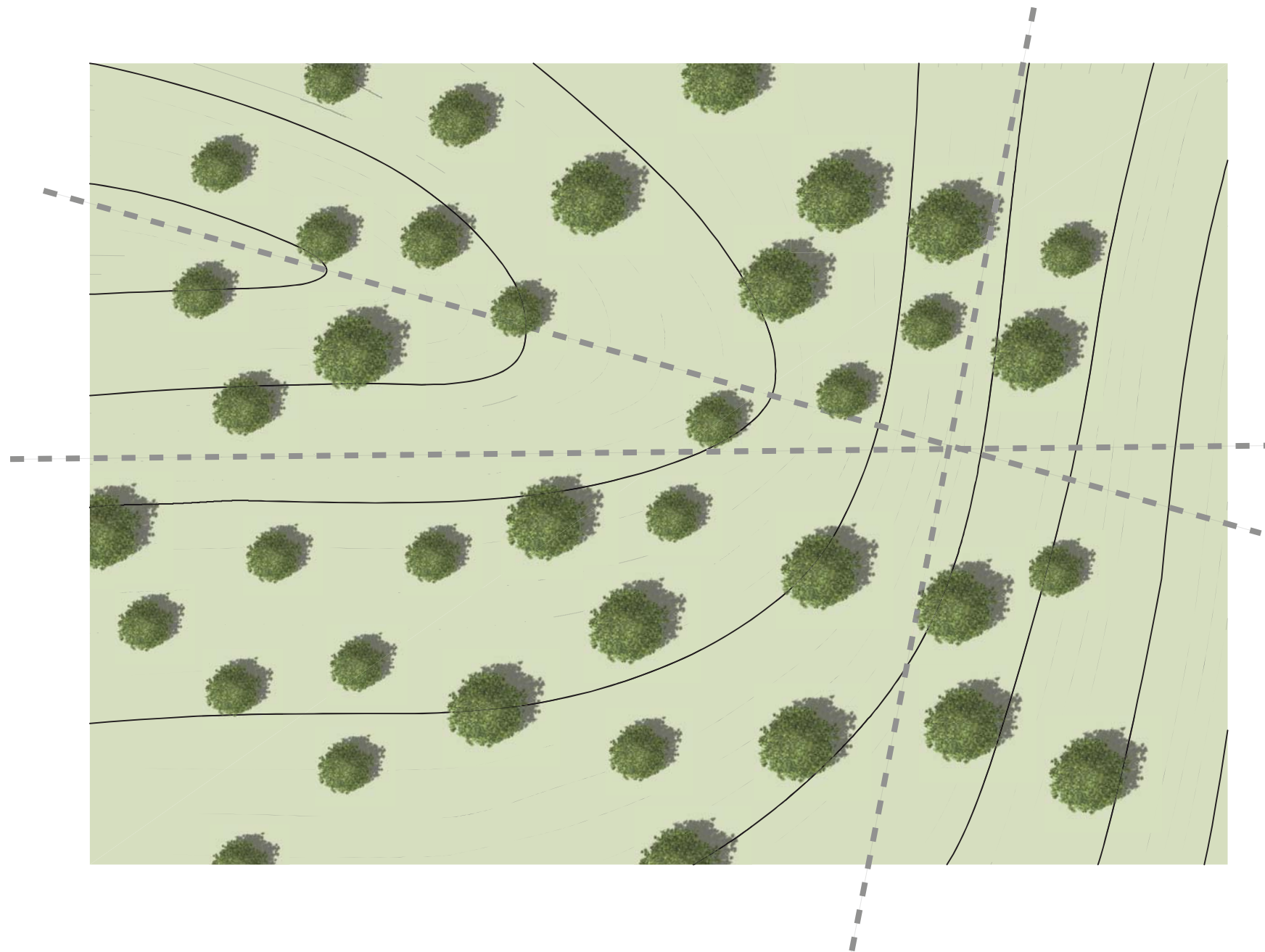
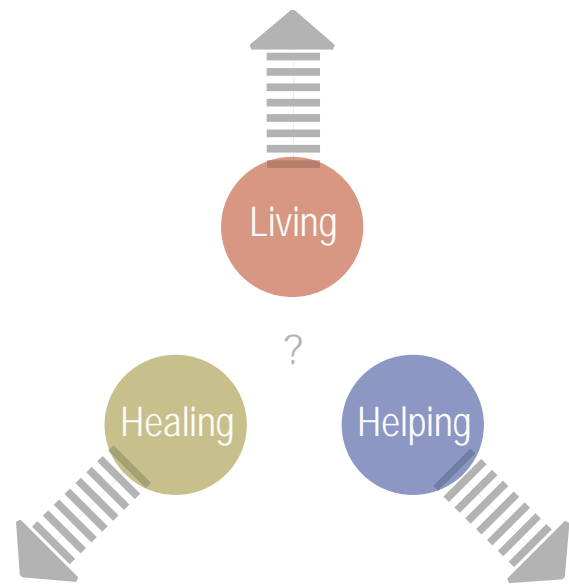
Site





Site

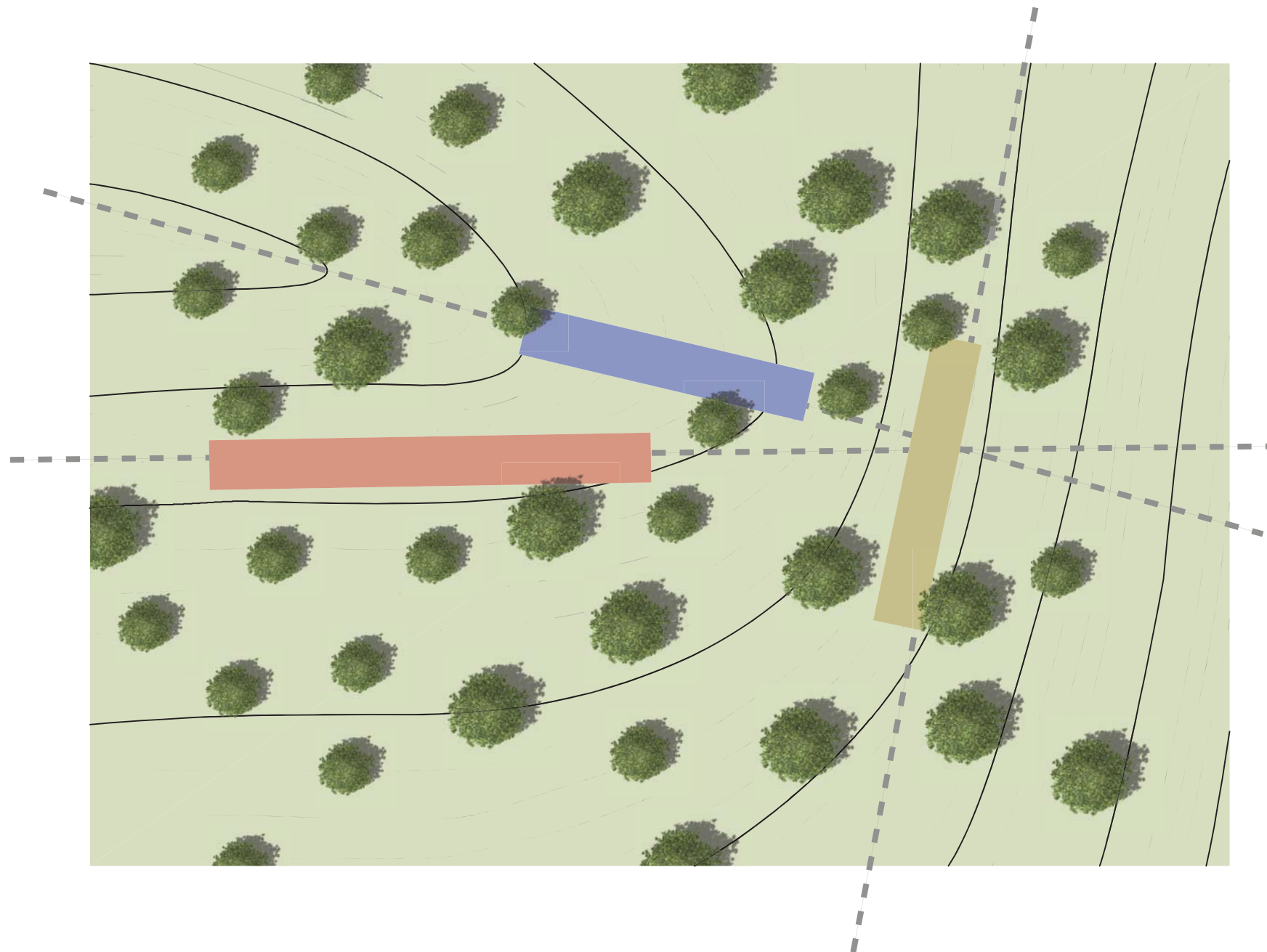
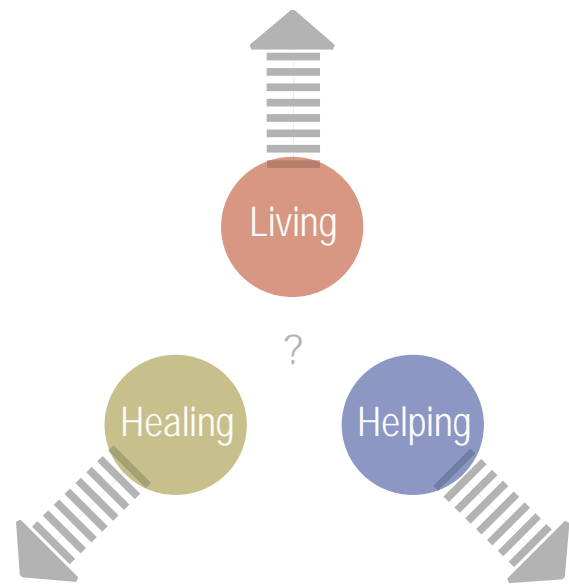




# Site - Program

1. Living: Area where all the resting activities develop, it is totally private oriented area, It is a place dedicated to reflection about all the daily activities.
  2. Learning / Healing: The whole objective of the project is healing. This process is not supported only with theory it goes beyond and is complemented with ideal spaces where the treatment activities can be taken place.
  3. Helping: Areas dedicated to the service of the whole center.
- The connection between all the elements is the fourth part of the program, creating a space dedicated to active community activities.



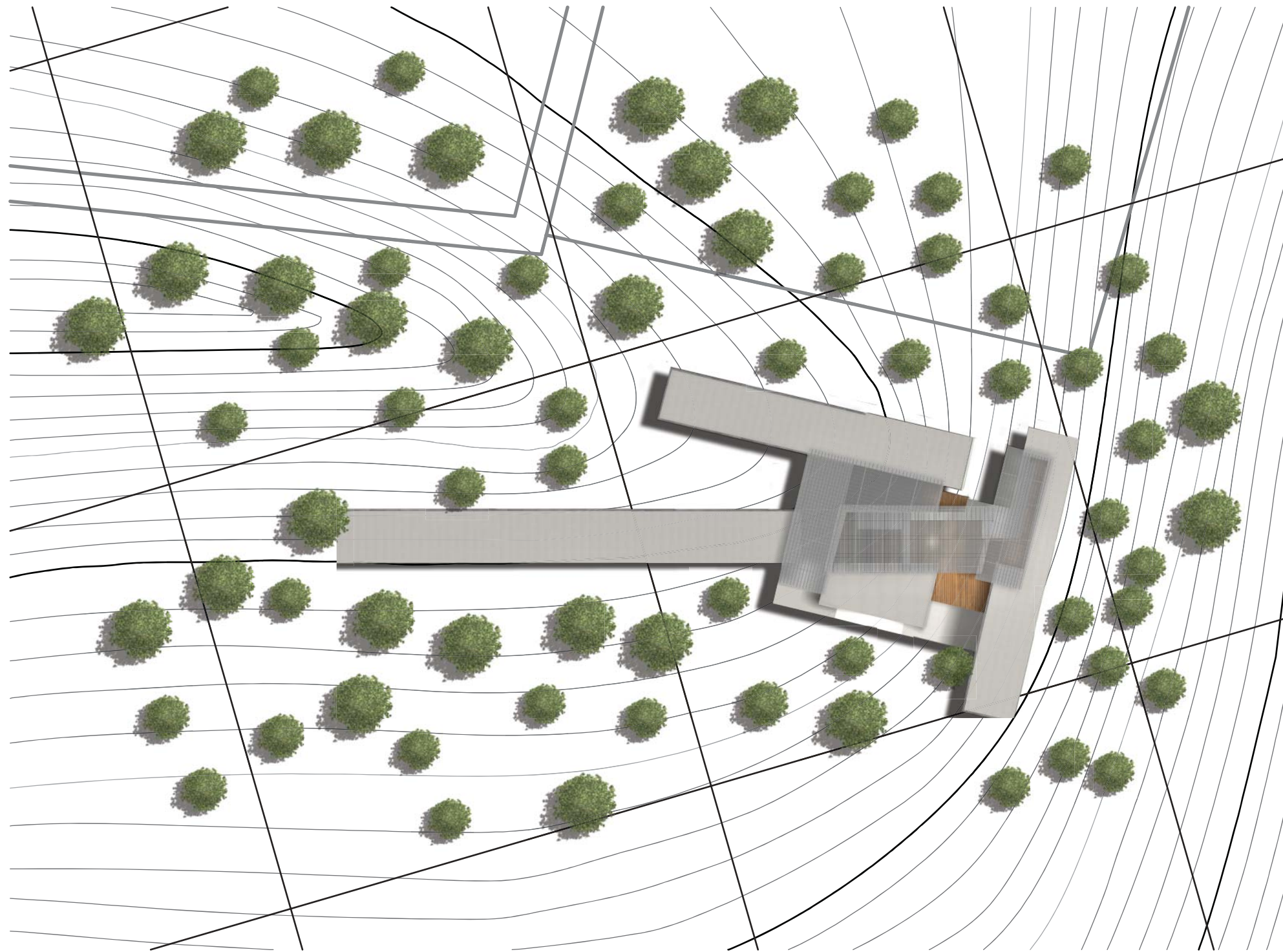


# Site - Program

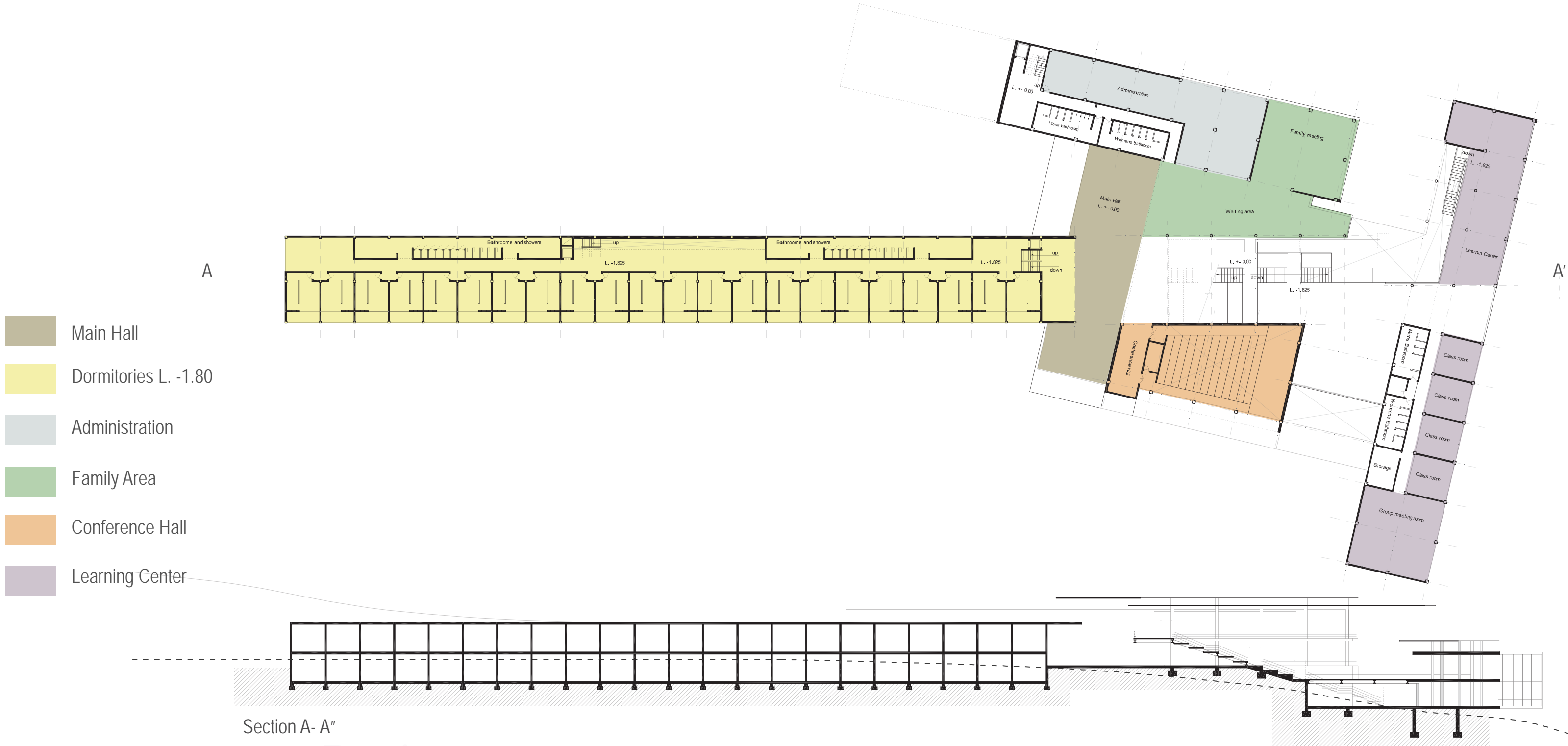
1. Living: Area where all the resting activities develop, it is totally private oriented area, It is a place dedicated to reflection about all the daily activities.
  2. Learning / Healing: The whole objective of the project is healing. This process is not supported only with theory it goes beyond and is complemented with ideal spaces where the treatment activities can be taken place.
  3. Helping: Areas dedicated to the service of the whole center.
- The connection between all the elements is the fourth part of the program, creating a space dedicated to active community activities.

Project



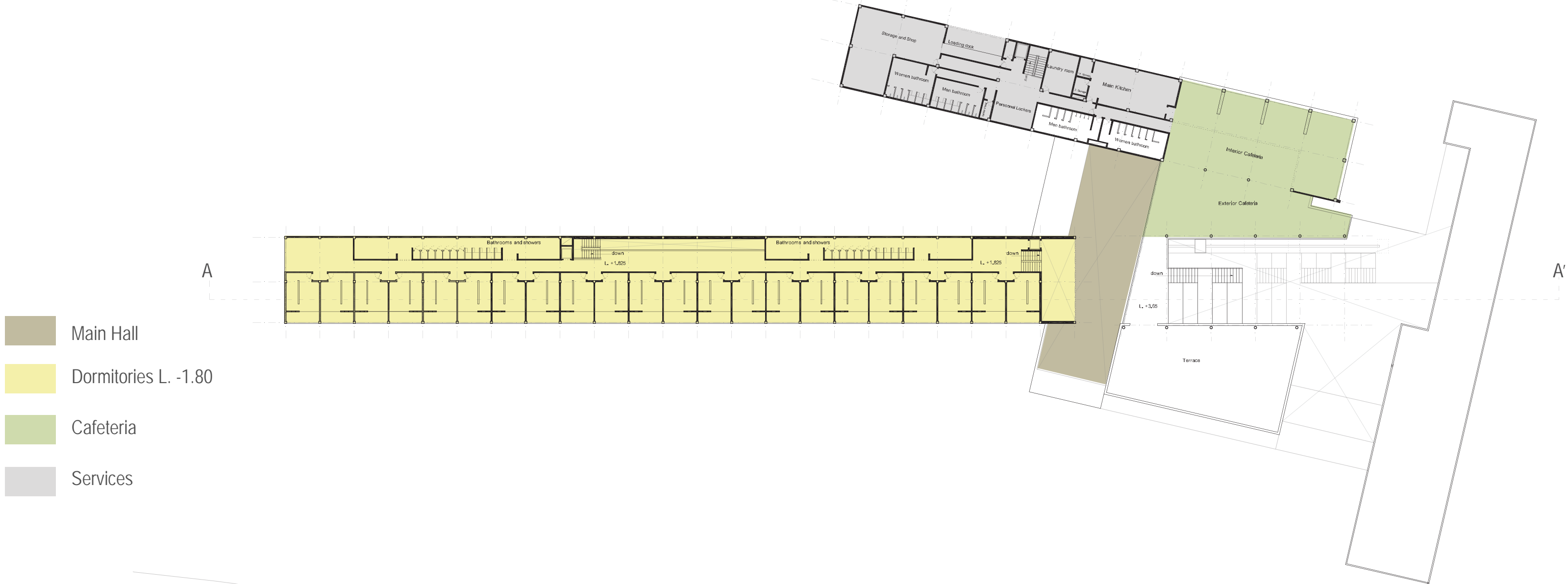


Project site plan

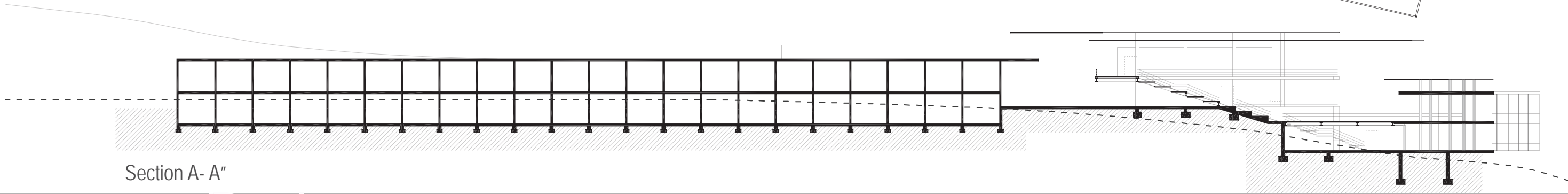


Project plan level 0,00





- Main Hall
- Dormitories L. -1.80
- Cafeteria
- Services

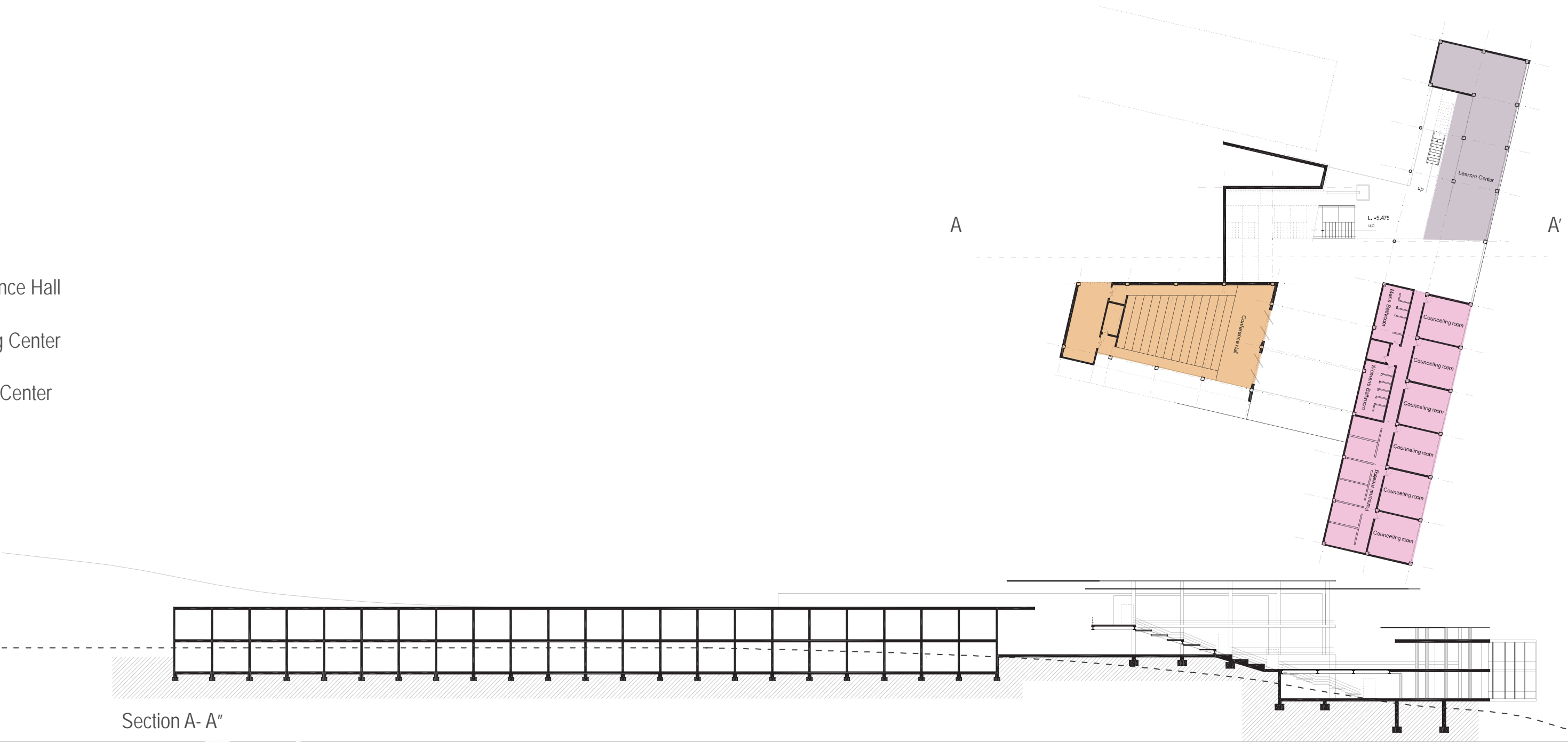


Project plan level +3,65

- Conference Hall
- Learning Center
- Healing Center

A

A'

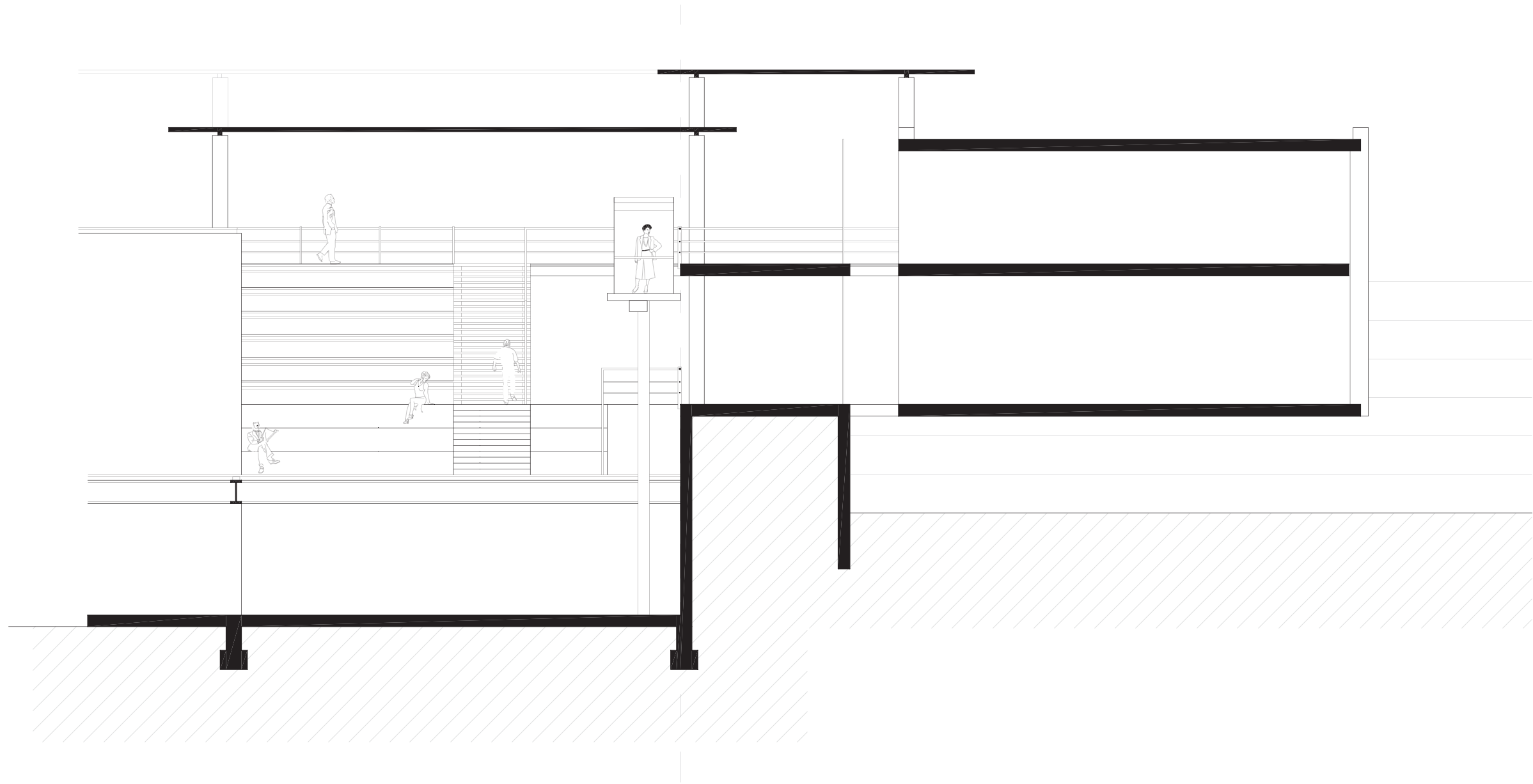


Section A- A''

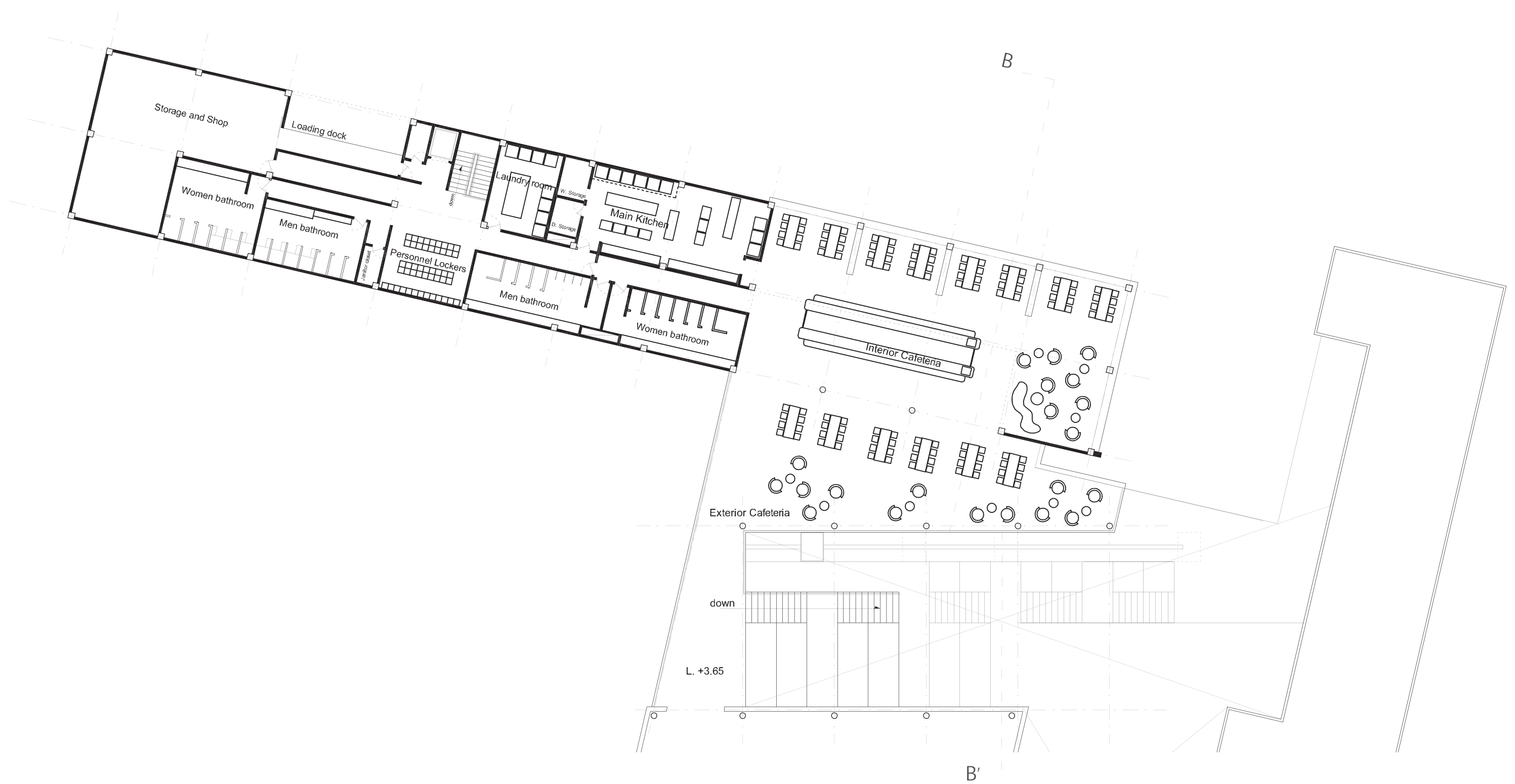


Project plan level -5,50



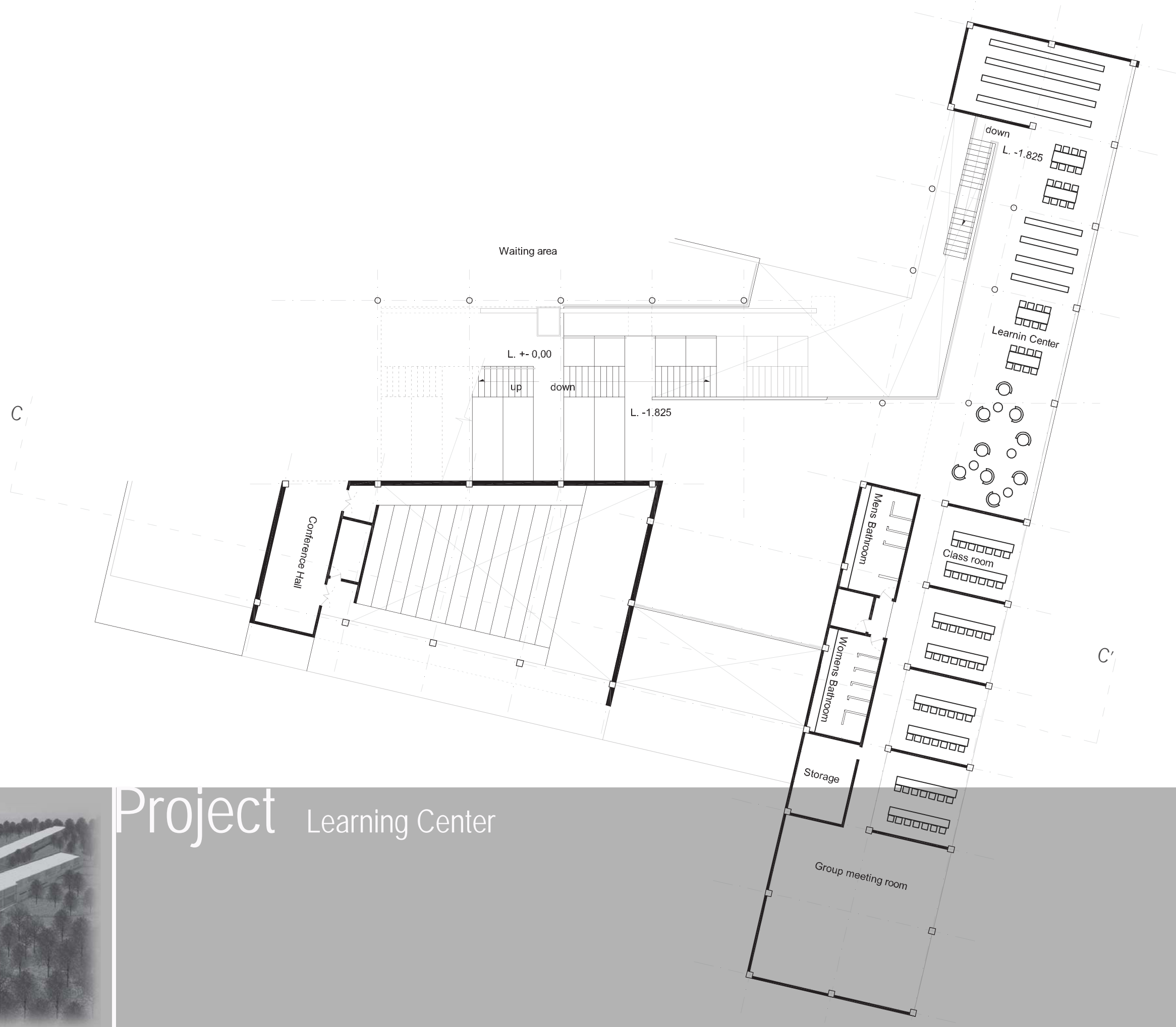


Project Section B - B'



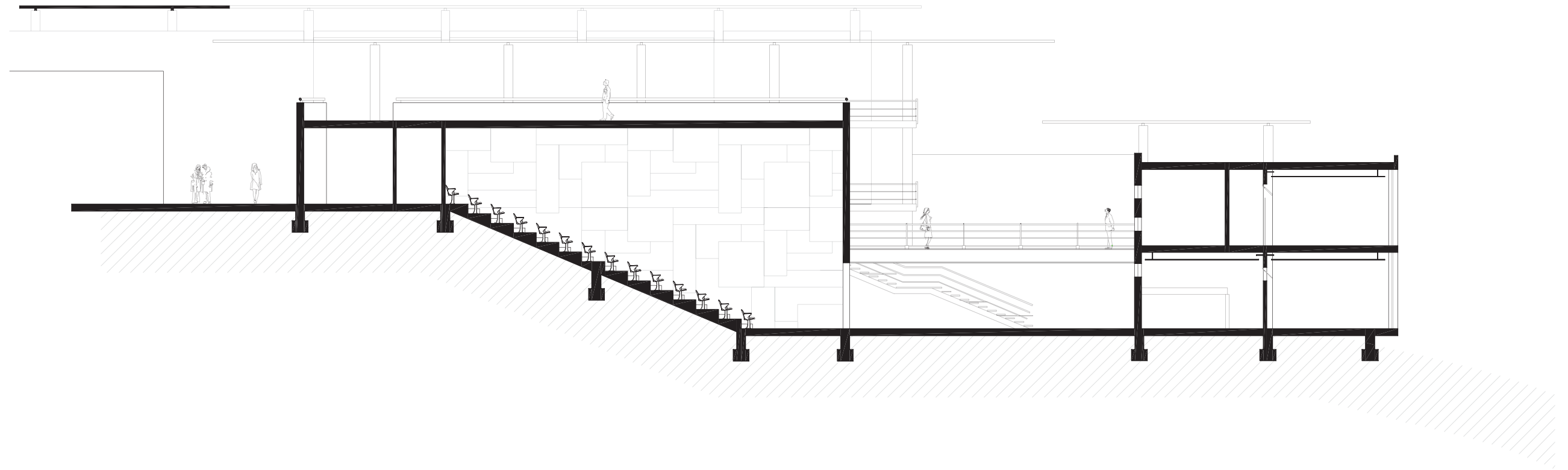
# Project Cafeteria and Services





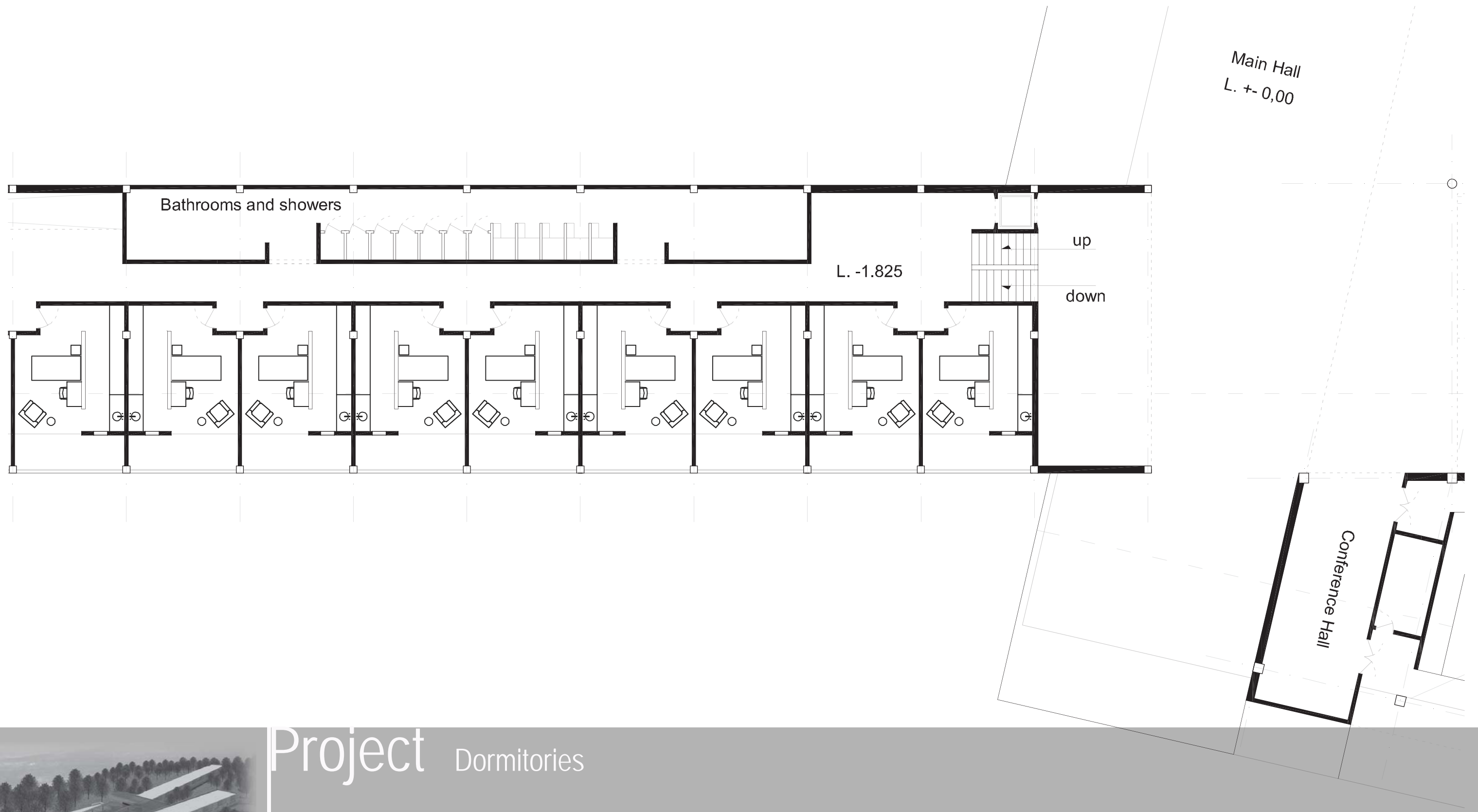
# Project Learning Center





Project Section C - C'





# Project Dormitories



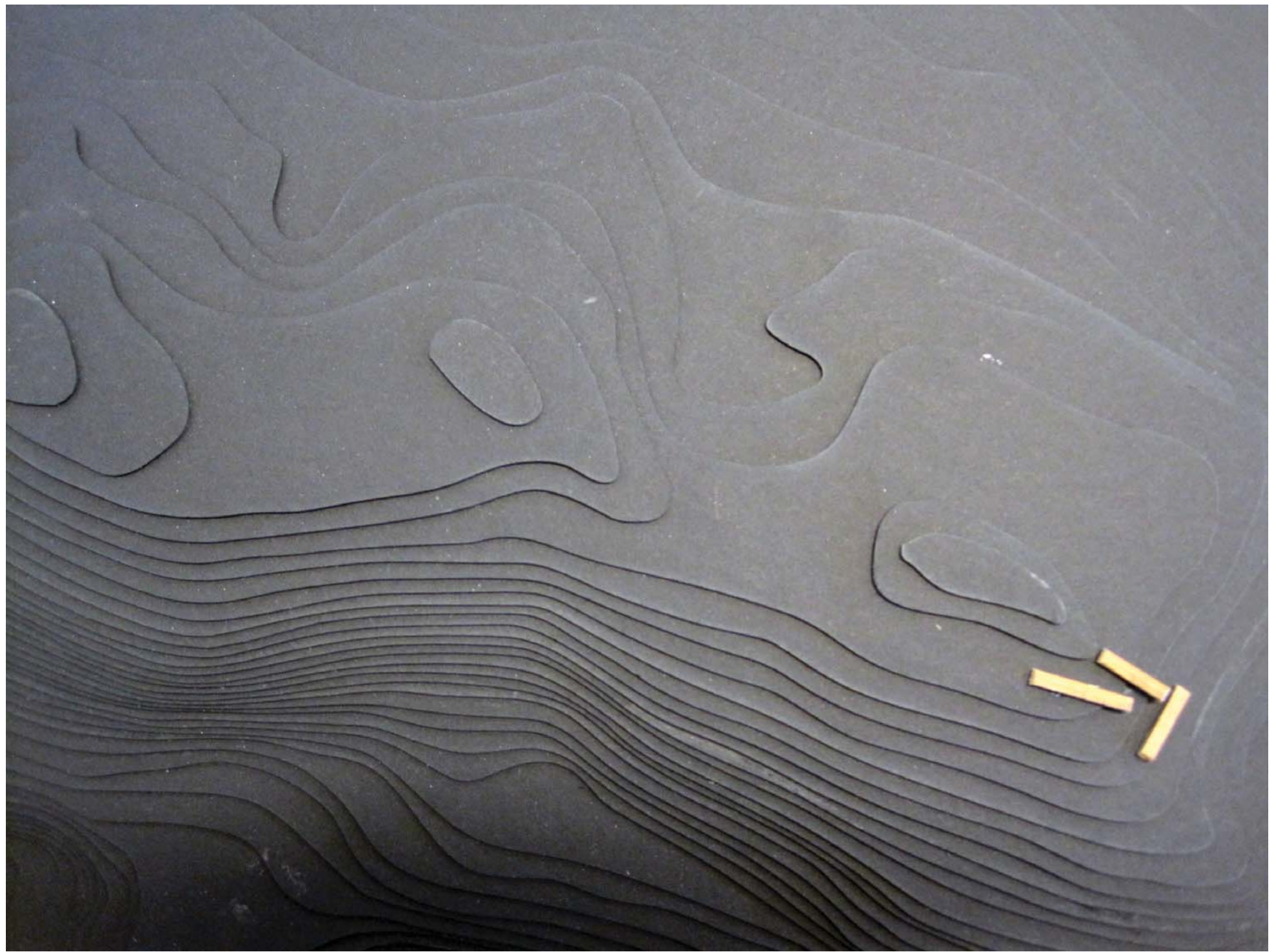
Project Exterior view





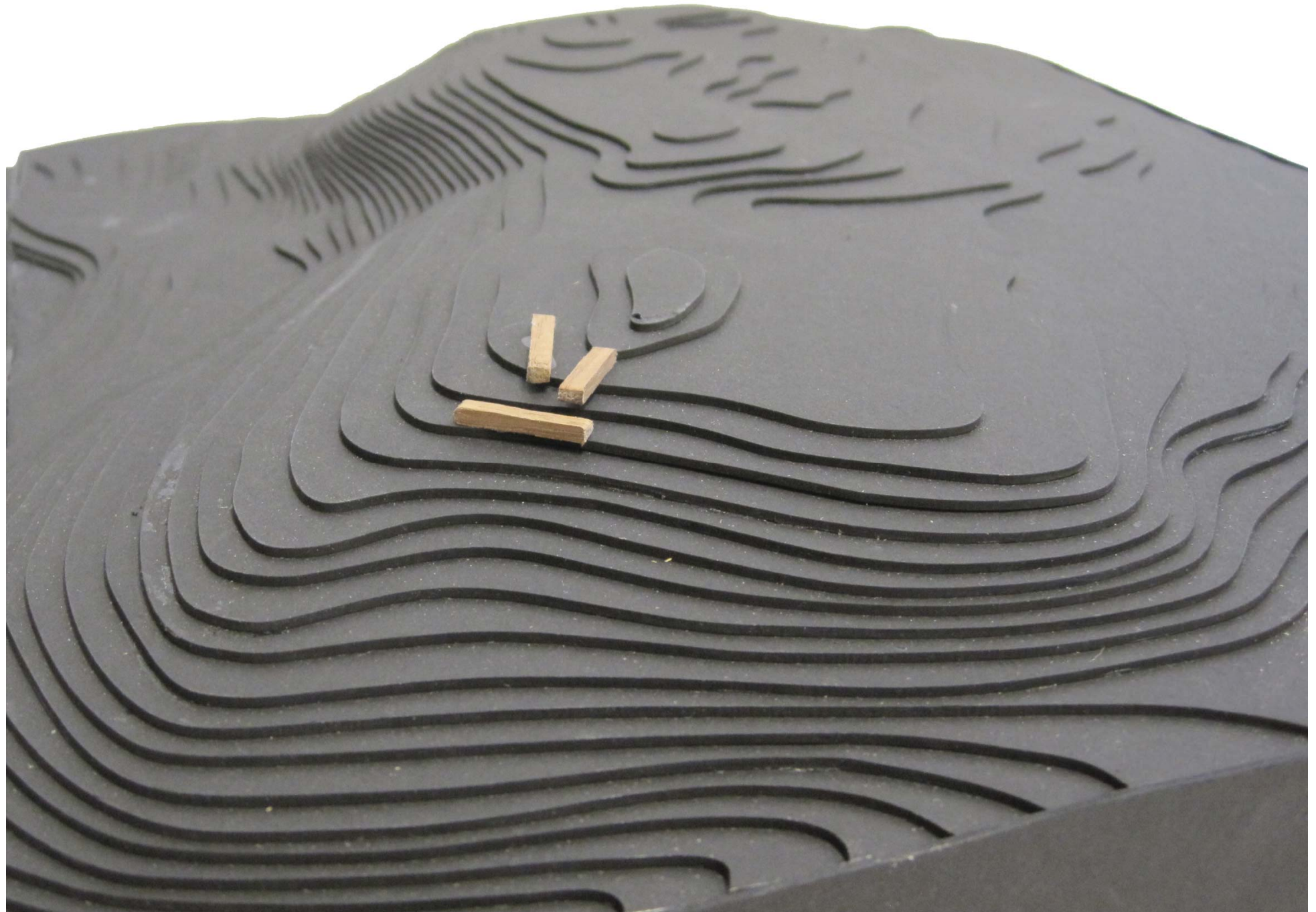
Project Exterior view





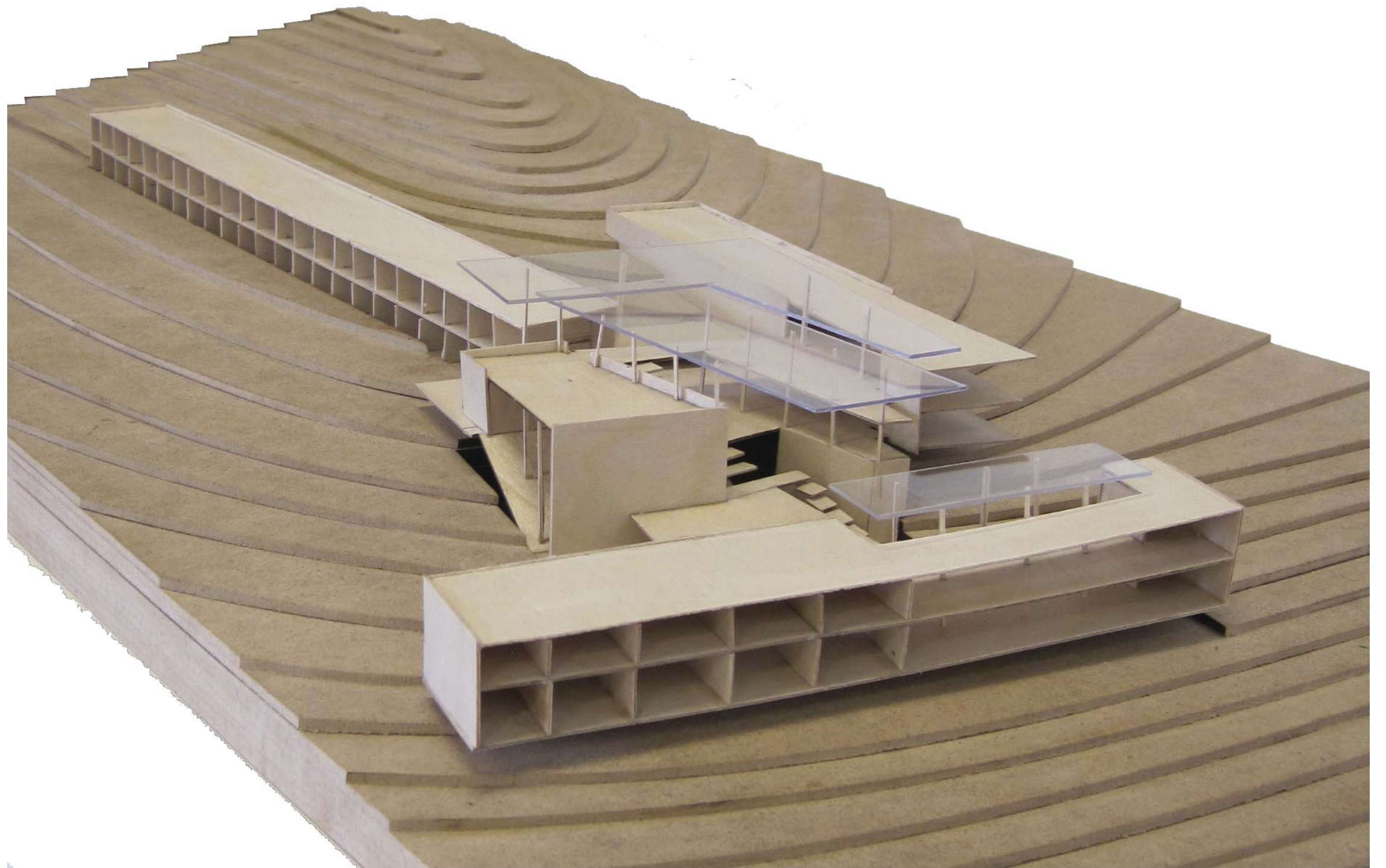
Project Model





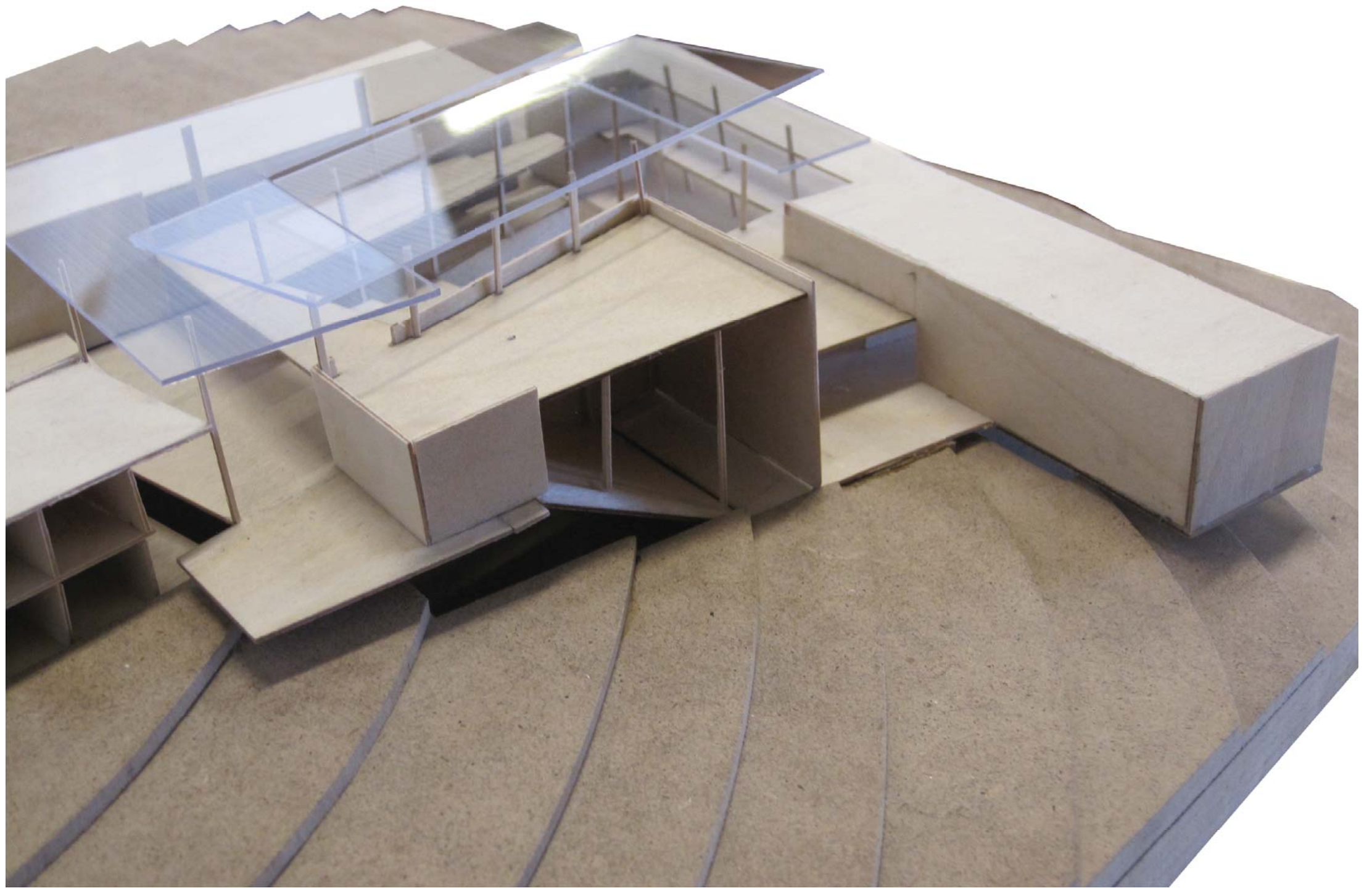
Project Model





Project Model





Project Model





Project Model