

Service Learning Theme Community Student Profiles

By Utsav Gandhi & Anita Thomas
CAMPUS EDITOR & TECHNEWS WRITER

IIT is participating in the national OneShirt competition. Anita Thomas, the RA of the Service Learning community in MSV, is working with Lynne Meyer, director of Service Learning and Spiritual Life, to encourage IIT students and Chicago residents to donate their unwanted articles of clothing instead of throwing them out and overcrowding landfills.

From April 1 until April 21, anyone can donate clothing, shoes, coats, etc. to any of the following finalized drop off locations:

MSV center lounge, SSV front desks, Gunsaulus Hall lounge, Office of Campus Life, and IIT Tower security desk.

On April 27, all donations will be weighed and then donated to God's Closet at First Trinity Lutheran Church.

The Office of Service Learning is also recommending students opting for on campus housing next year to choose the Service Learning theme community.

Below are six profiles of students who have spent the last academic year in that same community and highly recommend it.



Name: Weitong Wang
Major: Psychology
Year: Sophomore
E-mail: wwang57@hawk.iit.edu

Comment on the importance of service in your life: Community service is a source of learning new things, meeting new people and gaining valuable experiences. It makes my life colorful.

How do you integrate service into your academics? Service is actually a way for me to relax from intense academic works.

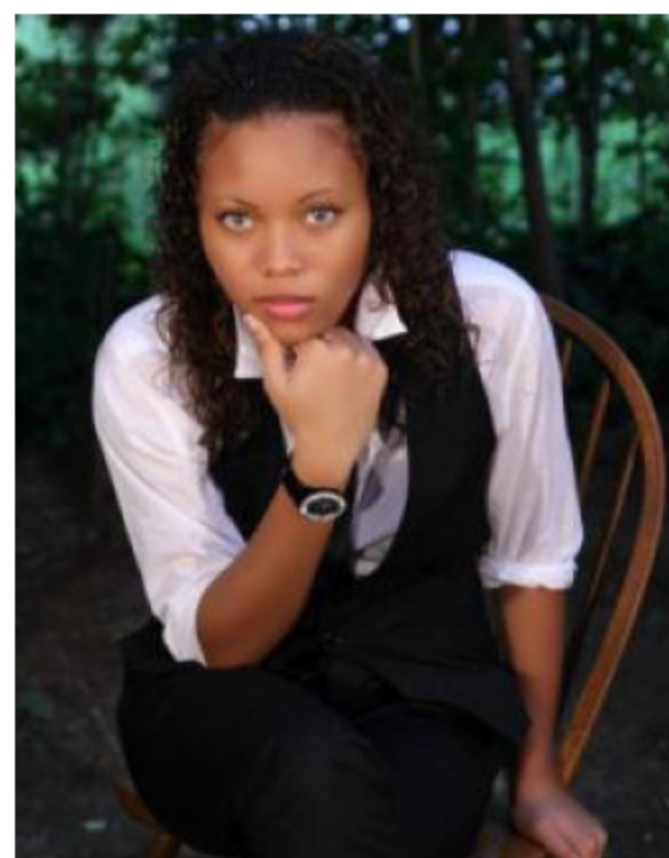
Comment on how it has been living on the Service Learning floor: I really appreciate the overwhelming opportunity to have access to volunteering and service experiences. I am very lucky to live on this floor and am eager to live on such a floor in the future.

obstacle, but an unspoken responsibility among all the students. Personally, I saw it as a way to provide opportunities for deserving individuals who didn't have the resources to provide this service for themselves. As a volunteer mentor and tutor at Hesus House, a homeless shelter based in Aurora, I was able to obtain a glimpse of the life of people who have fallen on hard times and who just need a hand to get back on their feet. It showed me that service isn't something that you have to do, but it should regularly be a part of your life because of the valuable insight and positive impact that you're making on the lives of others."



Name: Shafaq Imtiaz
Major: Mechanical Engineering
Year: Junior
E-mail: simtiaz@hawk.iit.edu

"Working with, and for, people in any community I live in has been an important aspect of my life since my first neighborhood litter-picking expedition in the third grade. Since then, I have realized the many advantages of being involved in community efforts. As I grew older, helping my community went from a localized definition of neighborhood as community to the global community at large. Working with school children, I became aware of the importance of supplying our children and peers with positive role models and mentors. The human experience is a shared one, a common one. When people are made aware that there are others who have been through, are going through, or just are empathetic towards their individual struggles and experiences, they are less likely to lose hope or feel alone, and more likely to ask and get the advice that they need. Living on the service learning floor has been an enjoyable experience since I have been able to meet people who want to give back to their community just like me, and do so for a variety of reasons and in a variety of ways. We can all learn a lot from each other, and represent endless perspectives. I highly recommend it!"



Name: Carolyn Boswell
Major: Mechanical Engineer
Year: Sophomore
E-mail: cboswell1@hawk.iit.edu

"Service is very important in my life; it helps me stay in touch with the needs and wants of people that I will continue to serve with my future doctorates in mechanical engineering. I integrate service into my academics by evaluating and then attempting to solve daily problems people undergo. I then try to find ways to incorporate these solutions into the mechanical engineering field, such as using alternative resources and discovering new building materials for car manufacturing. Living on the service community floor has been greatly beneficial to both my academic and social life."



Name: Anita Thomas (pictured to the left)
Major: Applied Mathematics
Year: Junior
E-mail: athomas5@hawk.iit.edu

"The inspiration behind my volunteerism stems from two sources. First, my mom is an occupational therapist. She has an incredible gift of patience, creativity, and empathy which she successfully passed down to her children. I can only hope to help people to the capacity that my mom has throughout her career. Second, I sincerely appreciate genuine help from others and I hope that I evoke the same gratitude in others through service."

Why do you serve? My success sets a standard for the next generation. My dedication to community service is my way of ensuring that kids today are prepared to fulfill that standard. I derive a sense of personal satisfaction from continuing a legacy of strength and success.



Name: Jing Li
Major: Accounting
Year: Senior
E-mail: ljing3@hawk.iit.edu

Comment on the importance of service in your life: It is an important part because the meaning of life is about giving back to others.

How do you integrate service into your academics? Doing service work in free time is a good way to relax from busy study.

Comment on how it has been living on the Service Learning floor: I am sure that I will miss everyone on my floor and all the activities when I leave.



Name: Christopher Stovall
Major: Aerospace Engineering
Year: Sophomore
E-mail: cstovall1@hawk.iit.edu

"Service means a world of difference to not only me, but to the people that you impact by providing it. All throughout high school, community service was stressed as a mandatory graduation requirement, which meant doing it was a task. However, after experiencing what it means to give back, it no longer became an

Person You Should Know: Keith Bowman

By Gokul Butail
TECHNEWS WRITER

The students of the Mechanical, Materials, and Aerospace Engineering (MMAE) department at IIT seem to be more excited, interactive, and expressive than ever before. One can attribute this to the new chair of the department, Professor Keith J. Bowman, who joined IIT in fall 2011.

Professor Bowman came to IIT from Purdue University, after serving as the Head of the Purdue School of Materials Engineering. He began as an assistant professor at Purdue University in 1988 after receiving degrees from Case Western Reserve University (B.S. 1981, M.S. 1983) and the University of Michigan (Ph.D. 1987). At Purdue, he was promoted to associate professor in 1992, and professor in

1996. His awards at Purdue University include receiving the MSE Best Teaching Award in 1992 and 1995, and Purdue's highest teaching award, the Charles Murphy Undergraduate Teaching Award, in 1995. In 2003 Bowman's name was added to the Purdue Book of Great Teachers. In 2007 he received the Purdue College of Engineering Mentoring Award, and he became a Professor of Engineering Education (by courtesy).

Bowman also served as a visiting professor and received Alexander von Humboldt stipends for research at the Technical University of Darmstadt, Germany in 1996 and again in 2002. He served as a visiting professor at the University of New South Wales in Sydney, Australia in 2003. From 1996 to 2004 he served as graduate program chair of the Purdue

School of Materials Engineering (MSE) during a substantial retooling of the program to more strongly emphasize doctoral degrees. In 2005-06 he served a one-year appointment as Interim Head of MSE and in 2007 was named Head of the Purdue School of Materials Engineering. He was also named a Fellow of the American Ceramic Society in 2000 and has held several division and society-wide positions.

Bowman has developed steadily growing activities in engineering education research with efforts in development of curricular materials for K-12 and beginning assessment approaches for engineering education, as well as documenting trends for gender, racial, and ethnic diversity in engineering colleges. He has developed and co-developed six undergraduate and six graduate courses, and has been strongly engaged in two revisions of the Purdue MSE

undergraduate curriculum.

He has given plenary, invited, and contributed research presentations in sixteen countries and has international collaborations that include colleagues in Germany and Australia. One of the latest feathers added to his cap was investiture as the Duchossois Leadership Professor at IIT.

One of Professor Bowman's key aims as the MMAE Chair has been encouraging interaction amongst students and faculty. He follows something that he calls an "open door" policy and is always willing to hear and solve student problems. Along with the student organizations of the MMAE department, he has planned an MMAE department forum, which will take place in the MTCC Auditorium on April 19, 2012. MMAE Students are strongly encouraged to attend.