

Tuesday, November 18, 1930

## REVIEWS

### HOTEL UNIVERSE

Phillip Barry

Presented at the Goodman Theater

With the staging of "Hotel Universe," the Goodman has introduced a new conception into the field of the theater; it is a field that many of the larger theaters whose very existence is dependent on pleasing the masses would dare not stage.

In this play the audience has certain demands made upon it; they must exercise their mental ability, and adapt themselves to the ideas of the author. The play is unique in that it conforms to the actual elapses of time, for the entire play presents two hours of the life of its characters, and consumes precisely that much time in its staging, with no intermission. It is quite a distinct view, when one considers that in the past we have had to delude ourselves into visualizing a five minute wait as any period from two minutes to ten years, depending on the fancy of the playwright.

"Hotel Universe" is a play based on the idea that we humans take some ideal as the keynote of our lives, and whether good or bad, hold to that, letting it have an undue influence upon the remainder of our existence. Thus we meet the six people who have let some illusion ruin their lives; and through the skill of Barry we learn their personal traits, beliefs, and course of living.

Through a fantastic conception, wherein these six are allowed to revive the incident wherein the illusion had its birth, they regain the normal aspect upon life, and see it again as something sweet and desirable. This "fantastic conception" is perhaps allegorical in structure, and baffling in its presentation, but it seems to lend itself to analysis despite the pessimistic opinion of some critics.

The various interludes in the play do much to relieve the tension following some of the action, and merely reiterate the fact that Barry is a "master of comedy," as "Holiday" proved; the body of it shows that the man has made a striking analysis of the psychological attitude of these various people.

The cast has managed to carry out the theme of this most difficult production to a satisfying degree, and in Butler Mandeville we feel that the Goodman has gained another worthy man. All the players manage to assume their multiple personalities with ease, and help create the feeling that they are actually reliving part of their life.

The play is essentially a psychological study intertwined with the presentation of the philosophy of life as interpreted by Barry, and must prove of interest to any man who feels he can spend two hours in what might be termed "useful pleasure."

A. B. A.

### MARTIN, ARMOUR FIREMAN, DIES

Mr. August Martin, for twelve years fireman at Armour, died Sunday night, November 2, at his home at 347 W. 59th Place.

Mr. Martin started work here in 1917 and continued until injury forced him to stop last year. At his death he was seventy-three years old.

He was buried on November 5, at Oak Forest Cemetery.

The members of the Bryn Mawr Community Church at 70th Street and Jeffery Avenue were addressed last Friday evening, the fourteenth of November, by Dr. G. L. Scherger on the subject of the "Early Vestiges of Man." Dr. Scherger is one of the regular speakers at this church, delivering an address there every other Friday night.

The world's largest telescope is being constructed at the University of California. It will be made up of a battery of 4,400 small telescopes and will be 200 inches in diameter.

Student archaeologists at the University of Denver will attempt the first archaeological survey of Colorado ever undertaken next summer.

## "Love Conquers All"

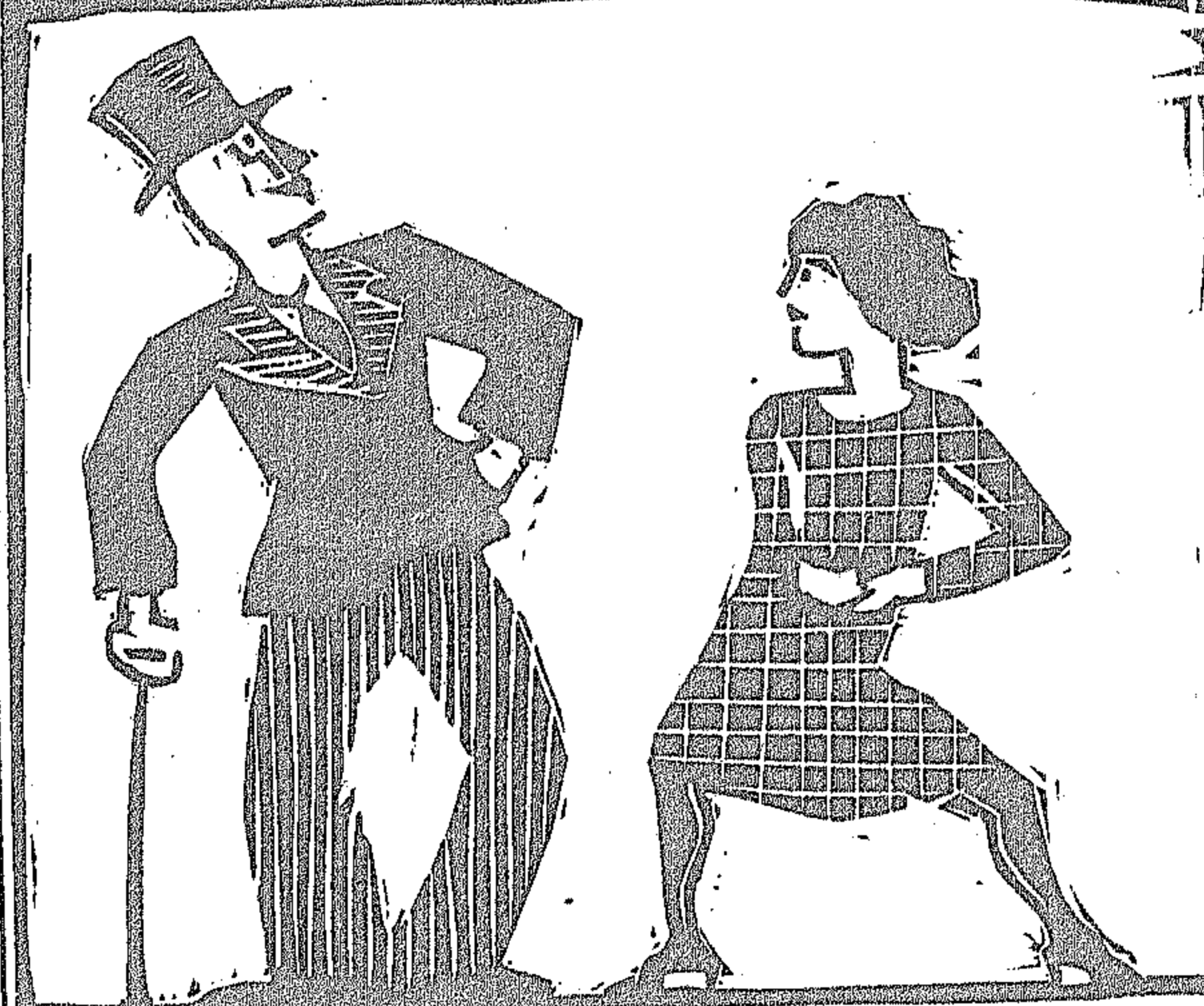
OR

## "The Pi Delt's Revenge"

Dave Chapman's Gripping College Drama

Please check your guns and gum at the door

The orchestra files into their places and Cedric Block, the conductor, leads the overture, "It Ain't Gonna Rain No More."



Susan Sweet, a shy little country girl, clad in gingham and cotton hose is accosted by her old suitor, Gordon Throckmorton-Sneed. He is threatening her because she won't wear his fraternity pin.

ACT I

SCENE I

Curtain

Susan: G'wan home ya silly lookin' yap you. I'm tha' heroine and I hafta sing a theme song at this point.

(Clears throat.) do-me—

Gordon (sneer): Quick, break down or I'll foreclose on tha' mortgage.

Susan: What mortgage?

Gordy: The mortgage on yer old man's sausage works. (He sniggers.)

Susie: Oh, how could you—my own dear, grey-headed daddy—

Gordy: Hee, hee, heh, heh, now my little gal, step over and give Gordy a nice kiss an' then you can wear my Pi Delt pin.

Susan: Never! No! Nix! Naw—g'wan git, beat it, scram. I'll holler, help!

Gordy: Yeah? Well, yer old man is minus one sausage factory.

Susan: Oh, that it should come to this! Have you no heart?

Gordy (he lofts): Yaw! Yaw! Yaw! Quick, tha' sausage works or the kiss.

Susan: I'll kiss you, for my good ole daddy!

(Mad cheering from the bleachers)

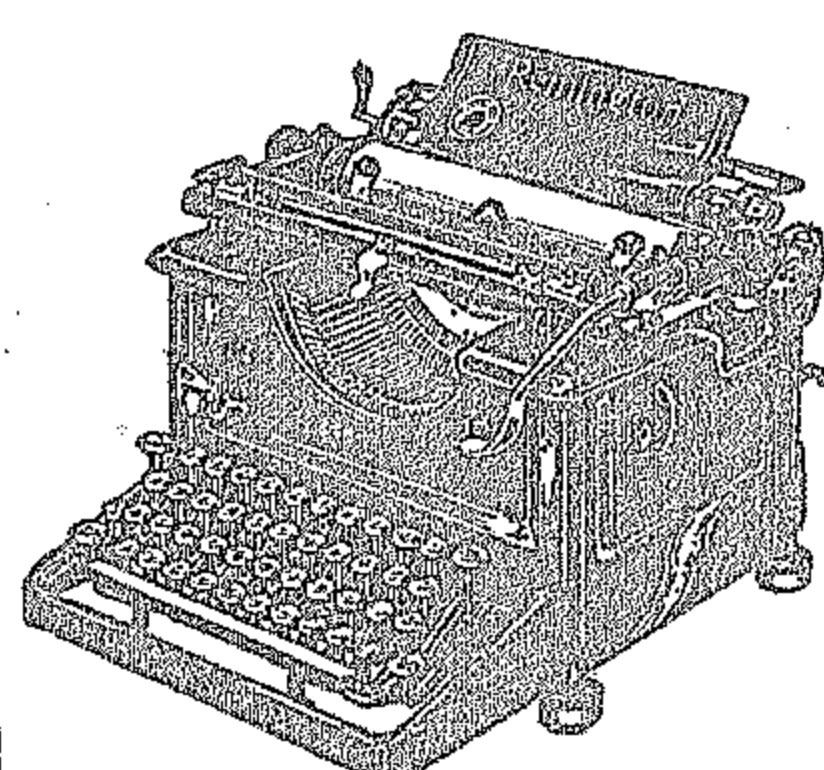
Curtain

Horrors! Susan must wear Gordy's pin! Is there no justice? Ah! watch—wait—see what next week will bring. A new—vivid—sparkling episode all about life and love in a college town like Gary, Ind. Don't miss it.

## ALICE RESTAURANT

3117 WENTWORTH AVENUE

WHERE QUALITY AND SERVICE REIGN SUPREME  
HOME COOKING



SPECIAL STUDENT RATE  
4 MONTHS for \$7.50  
for all standard makes.  
Remington No. 6 Noiseless 3 mo. \$7.50  
Remington Portable 3 mo. \$7.50

AMERICAN WRITING MACHINE CO., Inc.  
(Established 1880)

Free delivery. Satisfaction guaranteed.  
177 North Dearborn Street  
Telephone Central 2653

## Rifle Team Finishes First Meet of Year

The Armour Tech Rifle Team held the first of a series of telegraphic matches with the New York Stock Exchange last week. The series of matches will consist of three, running over a period of three weeks with the best two out of three matches necessary to cinch the series.

The shootings have a double purpose for the members of our team in that the man shooting the best score for the three weeks will be declared champion of the Armour team. Although our men dropped the first match they are confident of victory in the next two. Every free hour is dedicated to diligent practice so that the team will show its best form in the remaining matches in this series. Below is a table listing the results of the first match:

New York Stock Exchange.	
Ohlmann	377
Davidowitch	376
Frost	366
Arnold	365
Rosenblatt	363

Total	1847
Armour	
Patla	380
Wilson	371
Helmick	370
Hackley	363
Linnell	335

Total 1819

A Sigma Kappa Delta Fraternity pin was lost on the campus last week. A nominal reward will be offered to the individual who will return the emblem to Charles Jens, Jr. Communicate with him at the Institute or at 3344 S. Michigan Avenue.

## Fraternities Ready for Title Struggle

In preparation for the coming interfraternity basketball tournament, which promises to provide the upset that has been looked forward to for over a decade, several fraternities have already organized their teams and have begun practice. Triangle, Theta Xi, Sigma Kappa Delta, and Delta Tau Delta are well on their way for the title. The Beta Psi and Sigma Alpha Mu houses will be in a position to announce their line-ups this week. If guesses are in order it is quite safe to foresee a new title holder when the tournament of 1930 is played. The official practice schedule will

be uncapped today when the Sigma Kappa Delta team takes the floor. Other teams will use the gym for practice on dates as follows:

November 19—Rho Delta Rho.  
November 20—Theta Xi.  
November 21—Triangle.  
November 25—Sigma Alpha Mu.  
December 2—Phi Kappa Sigma.  
December 4—Beta Psi  
December 9—Phi Pi Phi.  
December 10—Delta Tau Delta.

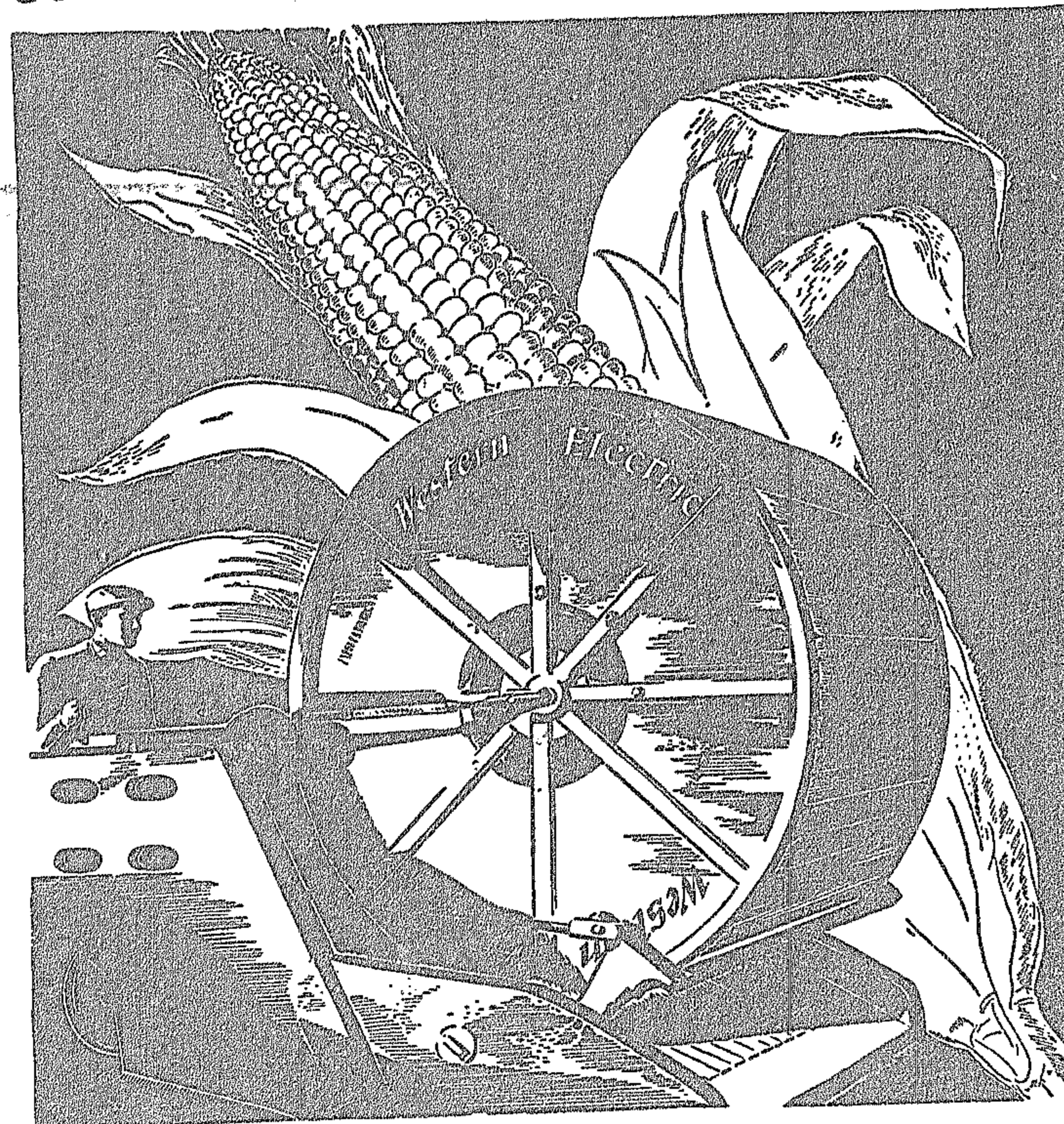
Ralphs Barber Shop  
117 E. 35th Street  
Prompt, Courteous Service  
NO WAITING

THE  
**BOULEVARD CAFETERIA**  
31st Street and Mich. Ave.  
Dining and Dancing from 3 P. M. to Midnight  
No Cover Charge

Try the New Barber Shop  
at the  
**MOTORIST'S ASSN. CLUB**  
Thirty-third and Michigan  
J. Edelsteen, Mgr.

Student Lunches  
**The Motorists Cafe**  
Michigan Ave. at 33rd

## STEPPING INTO A MODERN WORLD



6-ton reels of cable distributed  
with the speed of perishable food

A carload of telephone poles laid down a thousand miles away within 36 hours after getting the order! Rush calls of this sort must frequently be handled by Western Electric, distributors for the Bell System.

But even more remarkable is the regular day by day flow of telephone supplies. The Chicago warehouse—one of 32 in the national system—

handles 1,400 orders a day. In 1929 more than \$400,000,000 worth of equipment and materials was delivered to the telephone companies.

Distribution on so vast a scale presents many interesting problems to Bell System men. The solutions they work out mean much in keeping this industry in step with the times.

The opportunity is there!

**BELL SYSTEM**



A NATION-WIDE SYSTEM OF INTER-CONNECTING TELEPHONES