

List Statistics on Registration

This semester, that is the semester that began in September, 1930, a total of 257 men were admitted to the Institute as Freshmen. These men came from ten different states and two different countries. The men and the localities from which they come are listed below:

Chicago	190
Illinois	49
Wisconsin	5
Indiana	3
Montana	2
Idaho	1
Iowa	1
Nebraska	1
Florida	1
North Carolina	1
New Jersey	1
Canada	1
Argentina	1

Total 257

Of the 190 freshmen that came from the city of Chicago, 180 attended high schools in this city and ten did not. A list of those who attended high school in Chicago is given below:

Austin	10
Bowen	5
Calumet	4
Crane	19
Englewood	3
Fenger	2
Harrison	5
Hyde Park	3
Lake View	6
Lane	27
Lindblom	12
Marshall	2
Morgan Park	2
Parker	5
Roosevelt	1
Schurz	6
Senn	14
Tilden	26
Tuley	1
Waller	1

Radio Device Checks Upon Station Waves

A new "radio yardstick" installed at the United States Bureau of Standards, at Washington, D. C., keeps tabs on the 600 broadcasting stations and thousands of other transmitting stations in the United States. It makes sure that each is broadcasting on the special wave length that has been officially assigned to it. It has an accuracy of one part in a million.

Vibrating quartz crystals, housed under glass covers, are miniature broadcasting stations that emit waves of exceedingly exact frequency. These waves are taken as standard and compared electrically with those of commercial broadcasting stations. Any discrepancy between the two produces a whistle, and the musical pitch of the whistle is an exact measure of the amount by which the station is off its proper wave length. In order to keep the quartz crystals at a constant temperature, ensuring their accuracy, they are housed in a heat-insulated chamber resembling an ice box.

First Floating Power Ship in New England

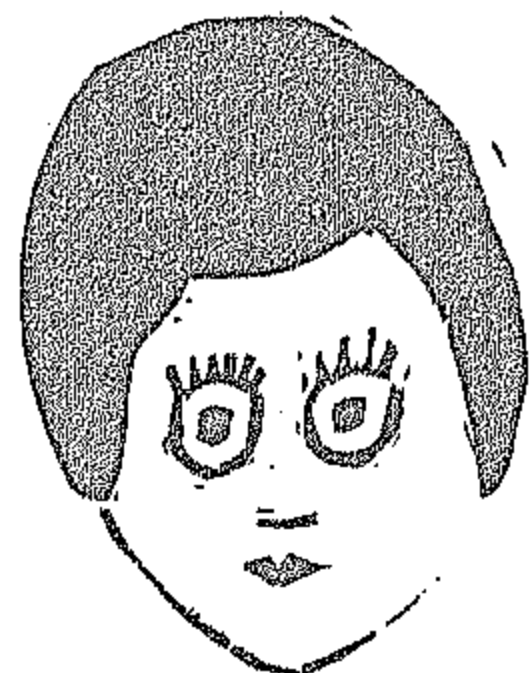
Soon New England is to have the first regular floating power station. The New England Public Service Company has just purchased the obsolete cargo ship *Jacona* from the United States Shipping Board. Modern steam turbines and generators are to be installed so the ship can generate electric power for cities situated on the coasts of Maine and New Hampshire.

Not long ago the plan of supplying power from a ship was shown to be practical. When shortage of water for hydroelectric power threatened to shut down factories in Tacoma, Wash., the United States Navy's airplane carrier *Lexington* went to the rescue. Electric cables were laid from the ship to the shore, and for thirty days the *Lexington's* 180,000-horsepower generators fed power into the city wires.

Two Texans are holding a rather novel race to New York; one is riding a large black bull, and the other is driving a goat and a jack-ass. The bull is favored.

COMING! COMING! COMING!

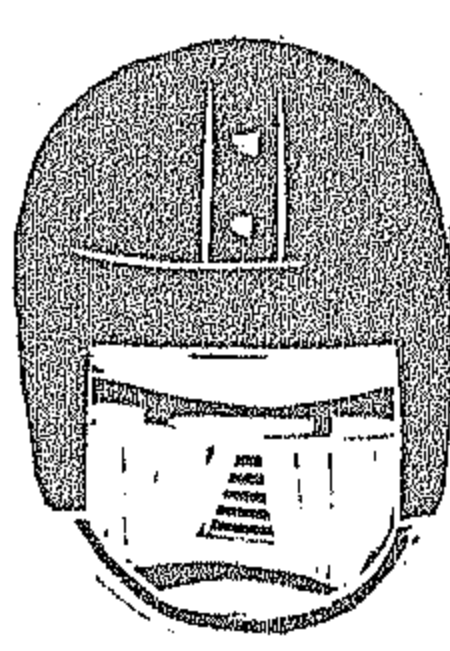
"LOVE CONQUERS ALL" or "THE PI DELT'S REVENGE." A dashing, daring, stupendous revelation of college life! SEE! HEAR! Watch this gripping drama unfold before your very eyes the evils and pitfalls of the modern college.



The Coeds!



The Wicked Parties.



The Campus Heroes.

ALL at NO EXTRA COST! In this paper, next week, and every week thereafter!

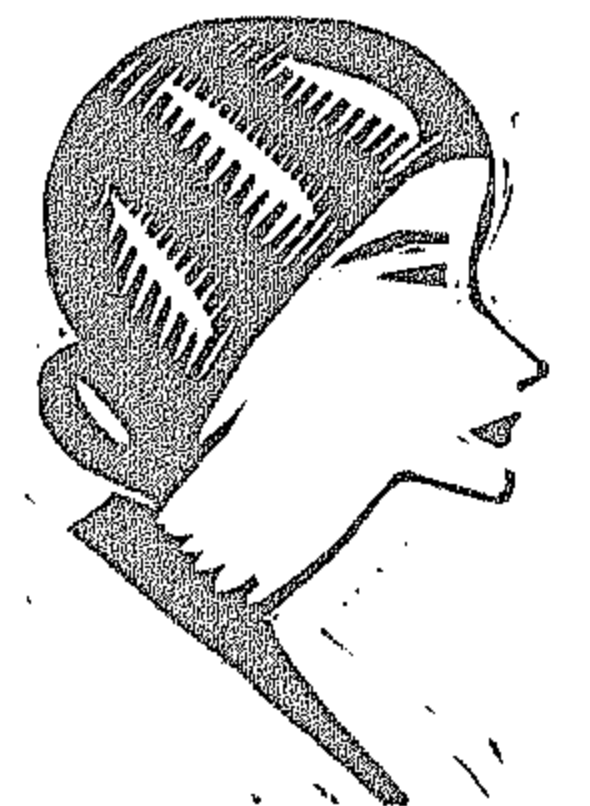
Played by the greatest galaxy of stars ever assembled under one roof!



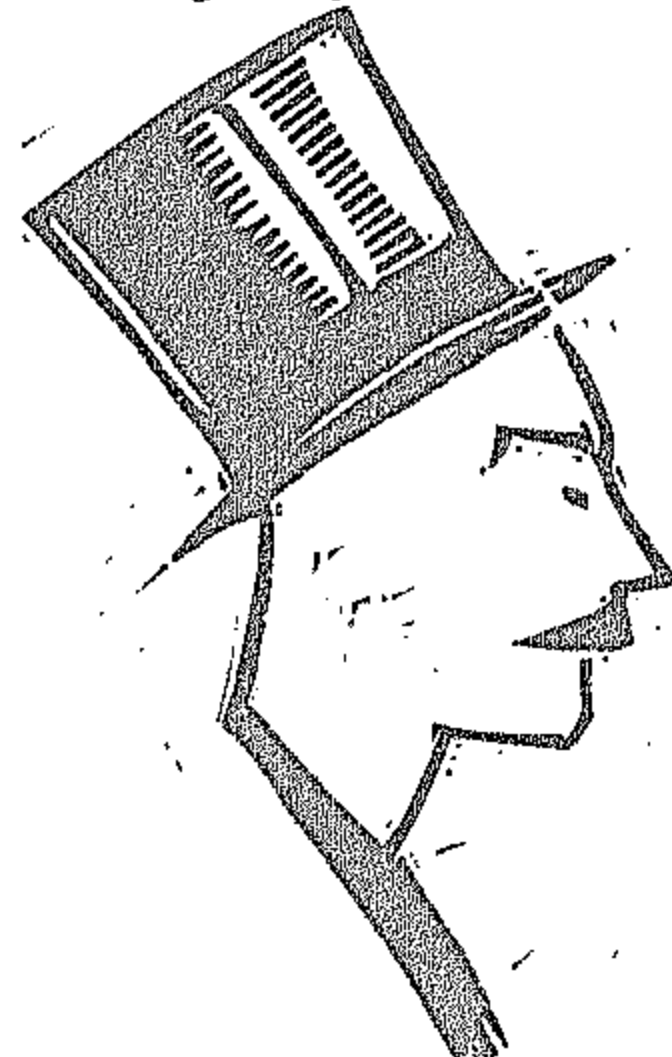
Susan Sweet, darling of the R. O. T. C., played by Miss Florie Waldorf.



Danny Dare, hero of the campus, played by Paul Muligatway.



Sonia O'Toole, cold, heartless vampire, despair of the Deans and Freshmen, played by Delores Ala Newburg.



Gordon Throckmorton-Saunders, rich wastrel, playboy and trifter, played by John Marmyore.

Scenario and Direction by Dave Chapman
Continuity and Casting by Dave Chapman

"The management earnestly requests ladies to remove their hats. Look around you for the nearest exit. In case of emergency, run, don't walk, to that door."

Next Week!

Reserve your copy now so as to not have to rely on the "Keep the City Clean" boxes!

Act I

"Love Conquers All"

Scene I

J. Schommer Rescues Struggling Chemical

Arthur Viel, Ch.E. '32, owes the presence of the hairy growth on his countenance to the kind-heartedness of "Jawn" Schommer. A group of Chemicals and Fire Protects waylaid said Mr. Viel and proceeded to stretch him out despite his vigorous physical protestations. The razor was just about to be applied to the treasured possession when John Schommer entered the picture. Visions of E's next February caused the students to scatter and allow the offended Junior to continue his marches around the Bacteriology Lab. Rumor hath it that said Mr. Viel will either remove offending disguise or become the object of much concern for a while. Blessed be John, says Viel.

Disease Germs Killed By Electric Bullets

Disease germs may be killed in the future by tiny bullets from electric guns, instead of being poisoned by antiseptics as at present. In a study made at the University of Cincinnati, Dr. D. A. Wells was able to destroy numbers of the germ *Staphylococcus albus*, one of the most virulent germs known and the usual cause of boils, by bombarding them with electronic bullets in a vacuum tube. An electric pressure of only thirty volts was needed to produce the effect. A battery of twenty dry cells could give this current. When the electric voltage was raised, the additional energy substantially increased the slaughter of the germs.

ALICE RESTAURANT
3117 WENTWORTH AVENUE
WHERE QUALITY AND SERVICE REIGN SUPREME
HOME COOKING

AMERICAN WRITING MACHINE CO., Inc.
(Established 1880)
Free delivery. Satisfaction guaranteed.
177 North Dearborn Street
Telephone Central 2653

SPECIAL STUDENT RATE
4 MONTHS for \$7.50
for all standard makes.
Remington No. 6 Noiseless 3 mo. \$7.50
Remington Portable 3 mo. \$7.50

Arx News

We were sorry to learn of the recent illness of Mrs. Sanders of the Burnham Library, of the Art Institute, and wish to assure her that she was missed very much. We are hoping for a very early return.

It is expected that the Paris Prize drawings of 1930 will be on exhibition at the Burnham Library this week or soon thereafter.

B. D. Anderson, or more informally, "Andy", treated a small group Professor Hammett, Mr. and Mrs. Dutt, Edward Prevar, '32 and Earl Kubicek, '32, to a movie travelogue of his own at his home on Tuesday evening, October 28th. It consisted of his travels in Europe and views taken on a trip through Yellowstone National Park.

One of the suggested projects at the World's Fair of 1933 is a restaurant in the air or rather three restaurants in the air, each one to be built above the other on a common stem. Each is to be a half circle in shape and they are to revolve. The time for each revolution is to be one hour. Service to the restaurants is to be through the stem. The exclusiveness of the dining palaces will be graduated according to their heights. The highest will be the most expensive. The idea of the revolving is that the diner may, at the beginning of his meal be facing the city and watch the lake while he is drinking his coffee.

The forty-third American Exhibition of art work is now open in the galleries of the Art Institute. Among all the work on display there is not one cubist picture.
E.C.K.

VERSE OR WORSE
F. F. Strassenburg

The Frame of Chance

He had a little picture frame
Upon his dresser top.
Each time I'd come another dame
Would occupy the spot.

The frame was pretty, eight by ten
I believe that was the size,
Yet I would like to know the time
I'd see the same face twice.

The thing just seemed to symbolize
His very frame of mind:
A passing fancy that he prized
Each new flame he did find.

But mark my word, I'll make a bet
That on some future day
I'll see the one girl in there yet
That he'll put there to stay.

A teacher once gave as an exam question "Give for any year the number of bales of cotton exported from the United States." A bright answer from a bright (or near bright) boy was "1491-None."

Ralphs Barber Shop
117 E. 35th Street
Prompt, Courteous Service
NO WAITING

THE BOULEVARD CAFETERIA
31st Street and Mich. Ave.
Dining and Dancing from 3 P. M. to Midnight
No Cover Charge

A New High Voltage Control Is Invented

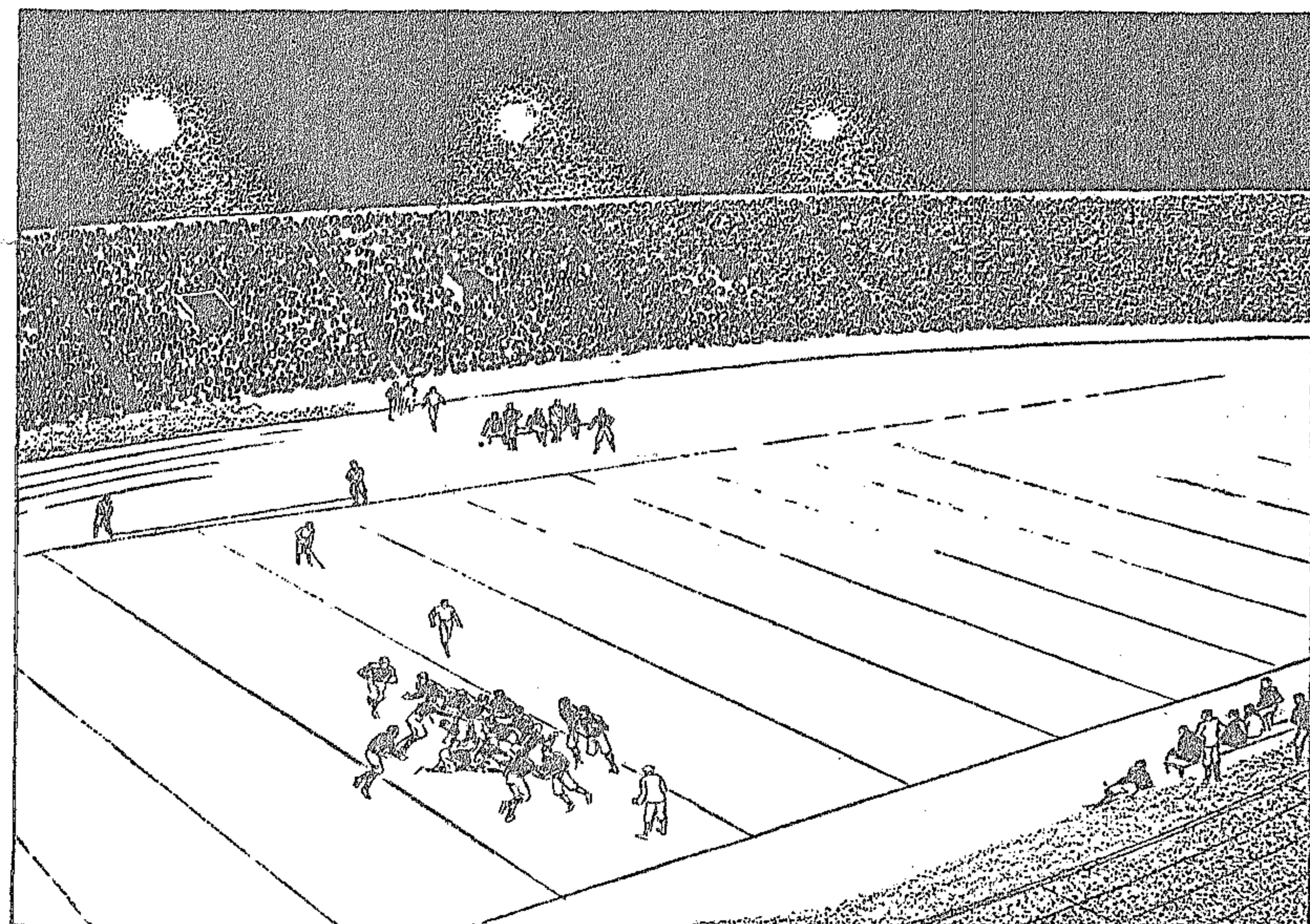
A new type of switch for controlling currents up to 600,000 volts, invented in Germany, is said to prevent dangerous sparks when the switch cuts off the current. Switches now in use for high voltages are cumbersome giants immersed in a tank of insulating oil to prevent the flashes. The charred oil must be changed often. The new switch, produced by the German electrical works of Siemens-Schukert, is bathed in a liquid the formula of which is still a secret, but which is understood to be far superior to oil as an insulator.

This particular switch was developed by Dr. R. A. Millikan and Professor R. W. Sorenson of the California Institute of Technology, located at Pasadena, to control the millions of volts that are used there in electrical tests. A vacuum so nearly perfect that it contains less than 1/760,000 as much air as an equal space of the outside atmosphere minimizes the flash of the arc when the switch breaks the electrical circuit.

SALESMAN WANTED

Christmas Box Assortments
Highest Grade Christmas Cards
Five Different Boxes of Genuine Etchings and Stationery—No Other Line Like Ours. Sells at Sight. Make 40 Percent.

"GEN ETCH" GREETING CARD COMPANY
Nineteen South Wells Street, Chicago



The banks of G-E floodlights at Georgia Tech's Grant Field can be adjusted to illuminate track meets as well as football games.

G-E Floodlighting Wins Favor for Football - Hockey - Track - Baseball - Tennis

G-E floodlighting equipment has a winning record. Its victories are counted in terms of pleased spectators, increased attendance, satisfied coaches and players.

The development of G-E athletic-field floodlighting equipment was planned with every consideration for the fundamental and special playing conditions it must meet. That is why the big Novalux projectors give ample and evenly diffused light over the entire playing area.

The development of General Electric floodlighting equipment has largely been the work of college-trained men in the G-E organization — other college-trained men are largely responsible for the continuing leadership of General Electric in furnishing the many other products which bear the G-E monogram.

JOIN US IN THE GENERAL ELECTRIC PROGRAM, BROADCAST EVERY SATURDAY EVENING ON A NATION-WIDE N.B.C. NETWORK

GENERAL ELECTRIC